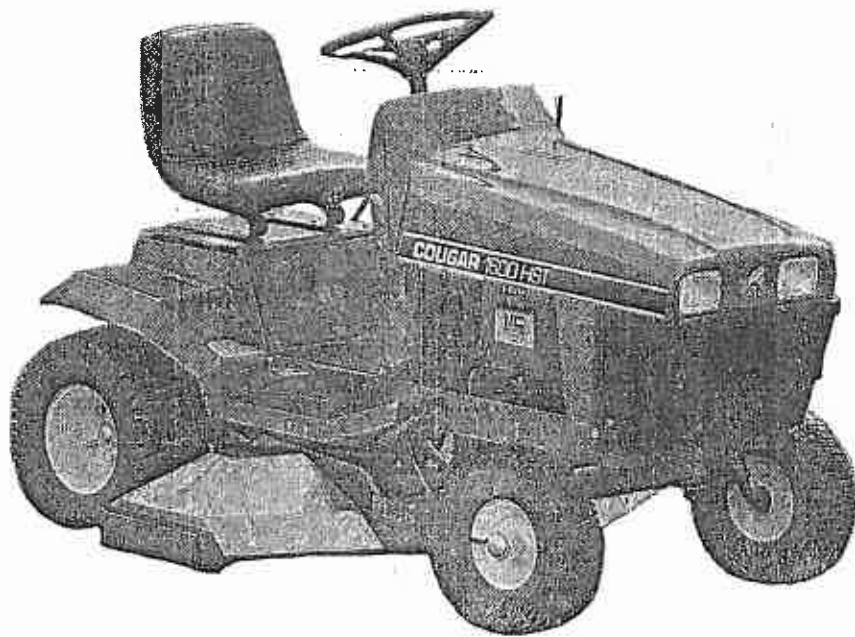


OWNERS MANUAL



COUGAR



KINGCAT INDUSTRIES LTD
KATI KATI, NEW ZEALAND

A Masport Group of Companies



WARRANTY POLICY

PRODUCT SERIAL No.

PURCHASER DEALER.....

DATE PURCHASED

Your KINGCAT machine has been carefully assembled and tested before leaving our factory, however, due to circumstances beyond our control, and the human elements (everybody makes mistakes sometimes), we occasionally have a problem which is our fault. We have therefore guaranteed that for a period of 12 months (commercial use 90 days) from the date that you (the first owner) take delivery of this machine, it will give you trouble-free service. This warranty covers all parts and labour necessary to bring your machine up to original condition should the problem be caused by either a faulty part or faulty workmanship.

To be fair, however, we DO NOT guarantee things over which we do not have control — generally these are:

Normal wear and tear, neglect, accident, misuse, non-compliance with operating instructions, unauthorised installation, alteration or modification, unauthorised repairs, substitution of parts or the fitting and use of any attachment which is not recommended.

The warranty will be null and void if:

1. We don't receive the warranty/installation certificate signed by the owner within 14 days of delivery.
2. The machine is put to some use for which it was not designed.
3. Warranty claims are not advised immediately.

We do not agree to cover the purchaser for any losses or damage which occur as a result of any breakdown. We reserve the right to make changes to our machines without bringing any existing machines up to the same specification.

Any warranty work must be carried out by our authorised dealers who must comply with warranty procedure.

WARRANTY REGISTRATION

PURCHASER'S NAME: _____
 ADDRESS: _____
 DEALER NAME: _____
 MODEL: _____
 SERIAL NO.: _____
 ENGINE TYPE: _____
 ENGINE NO.: _____
 DATE OF INSTALLATION: _____
 OWNER'S SIGNATURE: _____
 MAIN USE — Please tick one.
 (This information is helpful in our product development)

- 1 Contract Lawn Mowing _____
 - 2 Residential Lawn Mowing _____
 - 3 Parks and Reserves Mowing _____
 - 4 Farmwork (Main Use: _____)
 - 5 Horticultural Work (Main Use: _____)
 - 6 Orchard Work (Main Use: _____)
 - 7 Other. Please state: _____
- If you ticked 4, 5, or 6, please indicate type of holding e.g.
 Blood Horse Stud/Kiwi Fruit etc: _____

COMMENTS ON THE MACHINE AND THE DEALER'S SERVICE:

_____ stated by the purchaser and returned to this factory _____ days of delivery to ensure warranty.

PRE-DELIVERY CHECK

MODEL ENGINE TYPE

ENGINE NO. SERIAL NO.

PURCHASER'S NAME: _____

DEALER'S NAME: _____

PRE-DELIVERY DATE: _____

DEALER'S SIGNATURE: _____

1. LUBRICATION

- Grease all grease points
- Check engine oil level
- Check fuel level
- Check Hydrastatic oil level.

2. GENERAL CHECKS:

- Foot Pedal adjustment
- Hand Brake adjustment
- Steering Adjustment
- Battery Electrolyte level
- Idle Speed
- Top Speed
- Belt Tensions
- Tyre Pressures
- Check all bolts etc for tightness
- Operation of Choke Throttle and Stop Control
- Cutter Belt Tension

3. FINAL INSPECTION:

- Paintwork
- Tools and Engine handbook
- Operators Manual

4. Record any Accessories Fitted: _____

Servicing Mechanic: _____

INTRODUCTION

Thank you for choosing a new KINGCAT Machine. It has been carefully designed and manufactured under strict quality controls. We are proud of our reputation as a manufacturer of quality machines. However, in order for you to be totally satisfied, it is important that you read this manual before you commence operation.

Your KINGCAT dealer is competent to advise you on the correct methods of safe operation and routine maintenance. He should explain these to you on delivery.

Once you have accepted delivery and become familiar with the operation it is important that you fill out the warranty form. This **MUST** be done **WITHIN 14 DAYS** of taking delivery and returned to our factory:-

KINGCAT INDUSTRIES LIMITED
P.O. BOX 185,
KATIKATI,

This is important, to ensure that your warranty becomes validated.

SAFETY

KINGCAT equipment is provided with many safeguards, but statistics prove that most accidents result from operator negligence. To prevent accidents, read the following information carefully **BEFORE** operating your new machine. Should you have further questions, do not hesitate to ask your KINGCAT dealer.

1. Always disengage mower unit and wait for blades to stop turning before dismounting from tractor.
 2. Ensure handbrake is on and mower is disengaged before attempting to start.
 3. Never make any adjustments without stopping the engine — if making motor adjustments wait for it to cool down.
 4. Keep other people and animals well clear while operating.
 5. Do not operate machine which is not adjusted correctly or is overdue for servicing.
 6. It is dangerous to operate the engine in confined areas.
 7. Wait for the engine to cool down before refuelling.
 8. Never smoke or expose a naked flame near the engine especially when refuelling.
-

DELIVERY AND DEMONSTRATION GUIDE

When you receive your new Lawn Tractor ensure your dealer has carefully explained the following points:

1. Starting
 2. Foot pedal and Hand brake operation
 3. Hydrastatic and differential
 4. Operation of all Controls — key starter
 - throttle
 - foot pedal
 - hand brake
 - mower engagement
 - steering
 5. Use of the Discharge Flap
 6. Mowing Speeds and Mower Heights
 7. Belt Tensioning
 8. Location of Engine and Serial Numbers
 9. Regular Maintenance Procedures
 - Air Filter
 - Oil Drain and Level Points
 - Fuel Filters
 - Greasing Points
-

OPERATING INSTRUCTIONS

- ENGINE** Refer to engine handbook.
- STARTING:**
1. Ensure mower is in the up position.
 2. Make sure mower is disengaged and foot pedal is "free".
 3. Keep all bystanders well clear and make sure you are comfortably seated.
 4. Shift throttle lever to halfway position. Pull choke control full out. Turn key to start engine, once engine has started push choke half way in. When warm push choke full in.
- MOVING OFF**
1. Shift throttle lever to required position for correct engine speed (for mowing full engine revs)
 2. Depress foot pedal slowly — toe for forward, heel for reverse.
- STOPPING**
1. Lift foot from pedal. Tractor will stop in short distance.
 2. Apply hand brake and reduce engine revs.
 3. To stop engine simply shift the throttle to idle position and turn the key to off position.
- ENGAGING MOWER**
1. Start engine (see above)
 2. Set throttle control, to full revs and have mower set at full height.
 3. Pull mower engagement lever back slowly and ease it over to the left to lock mower into gear.
 4. Once mower has reached operating speed set height to required position.
 5. To disengage the mower, reverse the above procedure.
- MOWING**
- As mowing conditions vary greatly, it is important that you take special note of this section.
- Your mowing attachment has been designed to cope with a large range of grass types, conditions, lengths and mowing speeds. Always use high engine revs when mowing and regulate your speed with the foot pedal. As a general rule, if you have rough ground, long grass, tough grasses (e.g. rye grass, Kikuyu etc . . .) or if your grass is wet then lift the flap up and travel slowly.
- Select a reasonably high cutting height — 6, 7 or 8 if necessary, take two cuts, the first one high and the next a little lower. If your lawn is in good order and your grass of average length i.e. up to 100mm (4") long and dry then you can choose the grass to spread or mulched. If you wish to spread the clippings, lift the flap and select the desired mowing height. If you wish to mulch, drop the flap down.
- DO NOT TRY TO MULCH more than 50mm (2") of grass at one time — or the result will be displeasing. When mulching keep the travel speed down to allow time for the mower to process the cut grass.
- For certain mowing conditions your dealer may recommend HVD (high velocity discharge) blades as an option.
- Your KINGCAT dealer is qualified to advise you on how you should be operating your machine — if in doubt ASK HIM.
-

OPERATOR MAINTENANCE

Check the following every day or every eight hours of mowing:

1. Engine Oil Level —Remove dipstick and ensure level is correct. If necessary top up with the grade of oil specified in your engine handbook.
2. Engine Air Filter —Refer engine handbook.
3. Hydrastatic Oil —Only check when cold. The oil level should be at lower level line.
4. Belt Tensions —Refer adjustments.
5. Battery Level
6. Tyre Pressures —Front 20 p.s.i. max
Rear 14 p.s.i. max
7. Make sure the underside of the mower deck is cleaned out after use.

Grease the following points:

1. King pins (on front axle assembly) 2 nipples.
2. Foot pedal.
3. Mower Deck — 5 grease nipples.
4. Blade Engage Lever.
5. Handbrake lever (under tractor)

ADJUSTMENTS

To Tighten Mower Belt:

Set mower to the lowest cutting height. Engage "blade engage" lever. At the rear of the mower deck are two adjuster nuts on each side. Back the front nuts off on both sides. Now tighten the back nuts up evenly on each side till the back of the mower pan just starts to lift. Make sure both sides have been adjusted evenly and then tighten up the front locking nuts.

Pan Adjustment:

If the mower is cutting unevenly, the pan may be levelled by use of the ABS cams on each side of the chassis. By slackening the cam bolts on the outside of the chassis and turning the cams, the pan support chain may be slackened or tightened, enabling each side to be raised or lowered. After adjusting retighten all the bolts. This operation is best carried out on a level concrete surface.

SPECIFICATIONS

ENGINE: Briggs & Stratton
Twin cylinder I.C. Series

Horsepower 16hp
Cylinders 2
Cycle 4
Cooling Air

TRANSMISSION: Hydrastatic coupled to differential.

Speeds Infinitely variable both forward and reverse.
Min/Max Speed 0-12 kph

HANDBRAKE Disc caliper

TYRES:

Front 15-6.00 x 6 20 psi
Rear 18-8.50 x 8 14 psi

ELECTRICAL SYSTEM:

Battery 2 x 12V in parallel
Switch Key with starter interlock
Ignition Solid State
Lights Twin head lights

CAPACITIES:

Fuel Tank 15 litres 91 or 96 Octane
Engine Oil 1.42 litres SAE 30
Hydrastatic Top up oil is replaced when unit is serviced
Tellus 46
Transaxle differential .72 litres EP 90

CHASSIS: Monocoque construction
3mm plate steel

CONTROLS:

Height Adjuster Left hand side
Blade engage Right hand side
Throttle Left hand dashboard
Motion Pedal Right foot
Handbrake Left hand (forward of height adjuster)

TURNING CIRCLE:

Minimum turning radius: 750mm
Minimum Mowing radius: 550mm

MOWER:

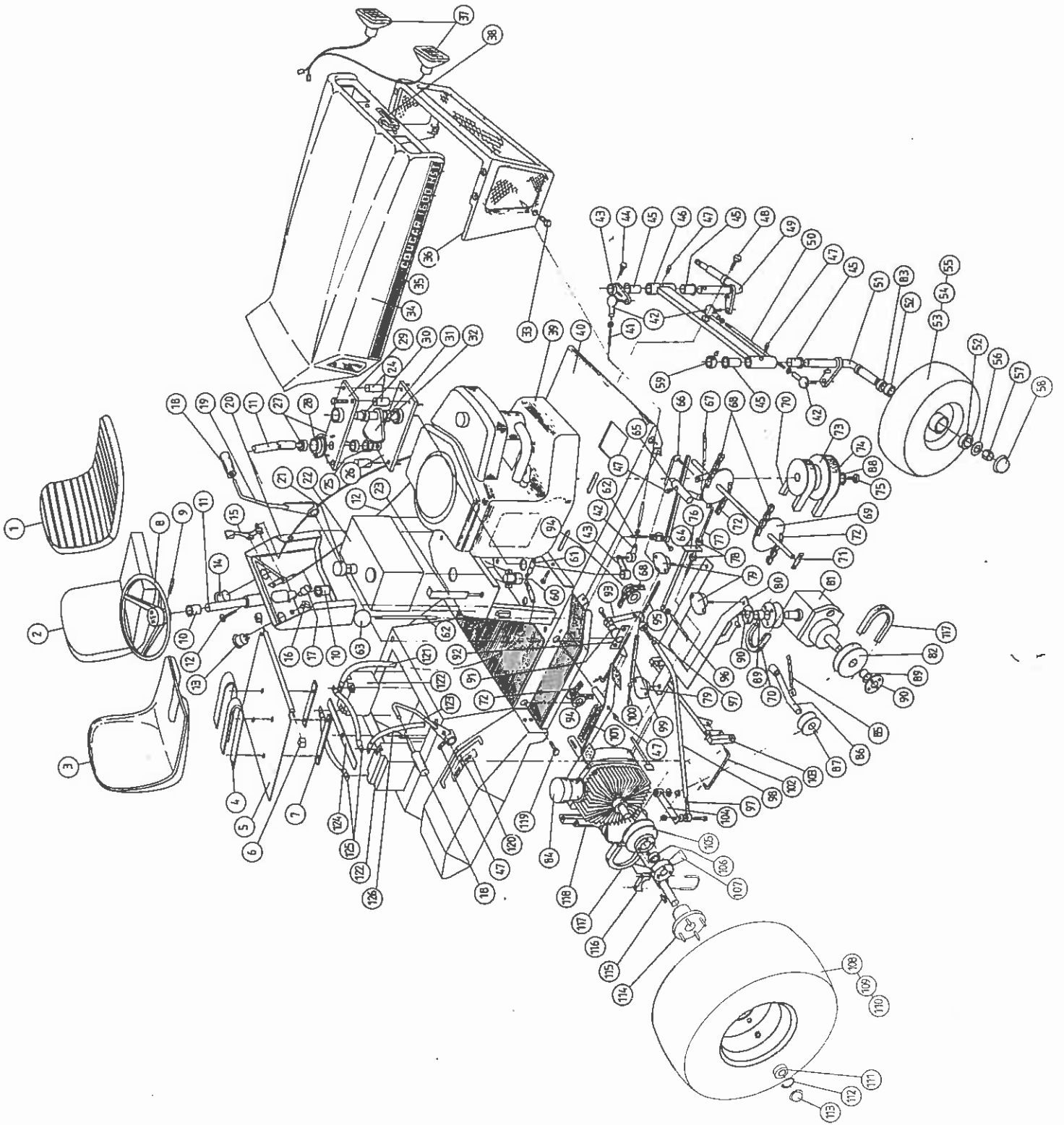
Width of Cut 1200mm, 800mm
Cutters (fixed blades) 3 x 460mm _ 2 x 460mm
Suspension Fully floating
Cutting Heights 10-85mm through 8 adjustments

DIMENSIONS: (Tractor)

Height 1.050m
Width .900m
Length 1.700m
Weight 260 kgs
Cubic 2.20 cubic m.

COUGAR TRACTOR UNIT

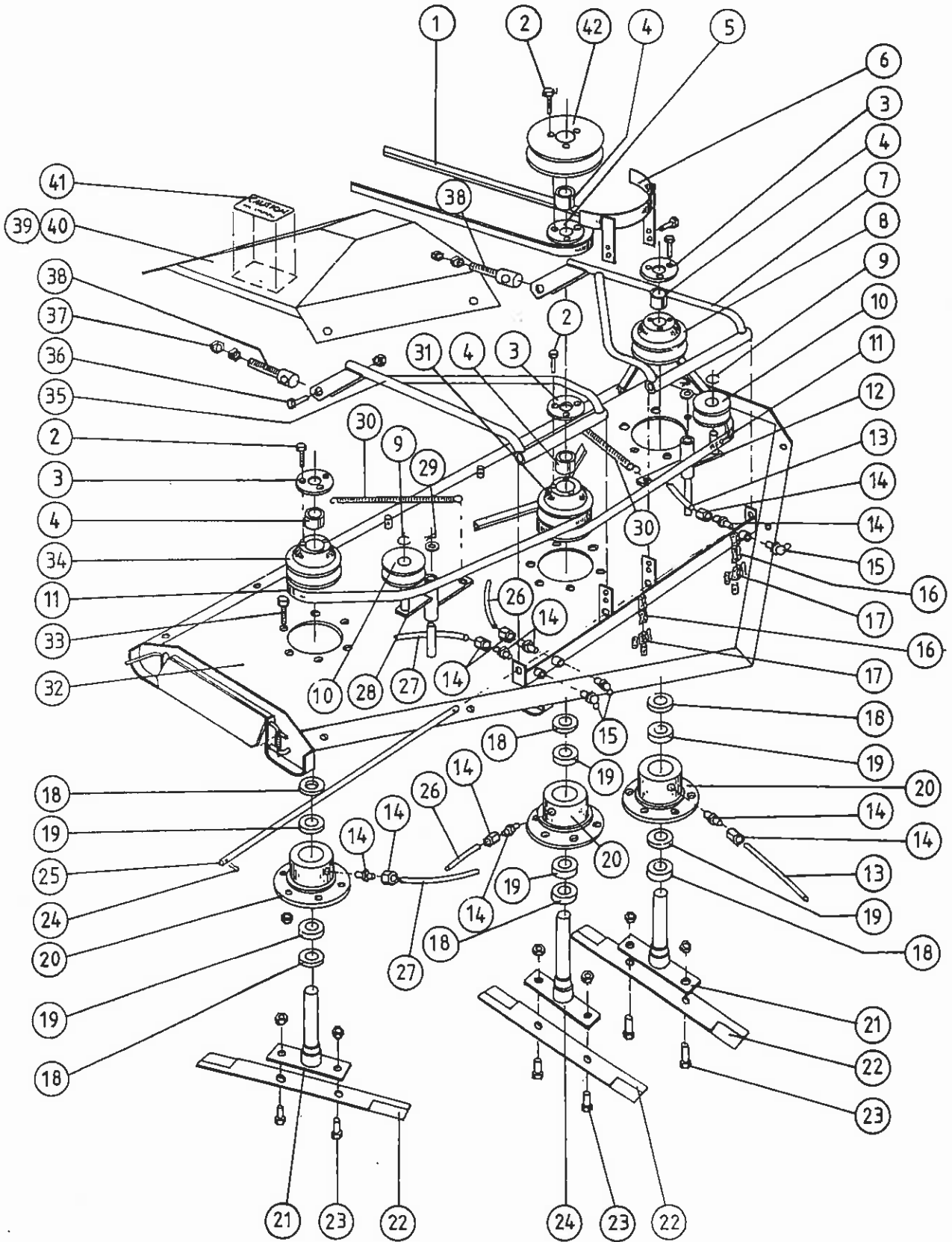
REF. NO.	PART NUMBER	DESCRIPTION	REF. NO.	PART NUMBER	DESCRIPTION
1	210110	Seat cover	64	142914	Clevis
2	210210	Seat form insert	65	143014	Rocker arm
3	210310	Seat frame (fibre glass)	66	143114	Lift shaft link
4	110410	Seat mounting spring	67	212110	Spring
5	110510	Seat mounting plate	68	143214	Lift chain (front)
6	110710	Seat mounting toggle	69	143314	Lift shaft
7	110610	Seat securing plate	70	243414	"V" belt
8	310810	Steering wheel	71	143514	Hinge
9	210910	Steering wheel pin	72	143614	Lift chain (rear)
10	211810	Bush	73	243714	Pulley
11	139014	Steering shaft	74	243814	"V" belt
12	239114	Choke cable	75	219110	Bolt
13	239214	Fuel gauge	76	143914	Dump control shaft
14	239314	Hour meter	77	144014	H/brake tie rod
15	316210	Throttle control & cable	78	144114	Collar
16	239414	Switch	79	344214	Rubber mount
17	321510	Ignition switch	80	144314	Gearbox sub frame
18	211010	Rubber grip	81	344414	Gear box
19	139514	Lift lever	82	244514	Pulley
20	239614	Control cowl	83	244614	Oil Seal
21	239714	Fuel cap	84	333310	Hydrostatic
22	139814	Fuel tank	85	219910	Spring
23	139914	Fuel tank bracket	86	144714	Tension arm
24	140014	Spacer	87	220330	Pulley
25	240114	Pinion	88	119210	Engine washer
26	140214	St/box base plate	89	244814	Bush
27	220410	Bearing	90	244914	Retainer plate
28	140314	Pinion housing	91	245014	Bush
29	140414	St/box top plate	92	145114	Housing
30	226111	Bearing	93	145214	Drop arm
31	240514	Bearing	94	217010	Lift chain adjuster
32	140614	Quadrant	95	212110	Spring
33	224920	Bolt	96	145314	Dump control arm
34	240714	Bonnet	97	245414	Rod end
35	240814	Transfer	98	145514	Pedal link
36	140914	Grill frame	99	212110	Spring
37	341014	Head lamp	100	145614	Spring adjuster
38	213110	Transfer	101	217130	Spring
39	341114	Engine	102	145714	Blade control link
40	141214	Chassis	103	145814	Blade control shaft
41	141314	Drag link	104	145914	Hydrostatic arm
42	313410	Tie rod end	105	224720	Pulley
43	141414	St/box arm	106	146014	Bush
44	241514	Bolt	107	146114	Fan
45	211810	Bush	108	246214	Rim
46	141614	Front axle beam	109	346314	Tube
47	213710	Grease nipple	110	346414	Tyre
48	213910	Bolt	111	OBSOLETE	Spacer
49	141714	King pin/axle (L.H.)	112	246514	Circlip
50	141814	Tie rod	113	Refer No. 58	Grease Cap
51	141914	King pin/axle (R.H.)	114	146614	Hub
52	223320	Bearing	115	246714	Key
53	242014	Rim	116	246814	Clamp
54	342114	Tube	117	246914	Belt
55	342214	Tyre	118	347014	Transaxle
56	242314	Washer	119	217710	Bolt
57	242414	Nut	120	211410	Blade engage transfer
58	242514	Grease cap	121	147114	Battery lead
59	242614	Collar	122	321310	Battery
60	221610	Solenoid	123	147214	Blade control lever
61	142714	Battery lead	124	147314	Battery strap
62	142814	H/brake control rod	125	147414	Battery lead
63	220710	Knob			



KINGCAT 1200mm MOWER

REF. NO.	PART NUMBER	DESCRIPTION
1	219512	PTO Belt
2	221920	Bolt
3	128520	Retainer Plate (Drilled)
4	122120	Pulley Bush
5	122220	Retainer Plate (Threaded)
6	122320	Belt Guide
7	122422	Connecting Arm (L.H.)
8	122520	Spindle Pulley (L.H.)
9	222630	Circlip
10	220330	Pulley
11	322720	Vee Belt
12	122820	Tension Arm (L.H.)
13	122920	Grease Tube (L.H.)
14	123020	Grease Tube Connection Set
15	223120	Grease Nipple
16	317510	Lift Chain Front
17	317610	Lift Chain Links
18	223220	Spindle Seal
19	223320	Spindle Bearing
20	223420	Spindle Housing
21	123520	Spindle (Outside)
22	223620	Fixed Blade
23	223720	Bolt
24	123820	Spindle (Centre)
25	123920	Connecting Pin
26	124020	Grease Tube (Centre)
27	124120	Grease Tube (R.H.)
28	124220	Tension Arm (R.H.)
29	224330	Circlip
30	217130	Spring
31	224420	Spindle Pulley (Centre)
32	124520	Cutter Chassis
33	224630	Bolt
34	224720	Spindle Pulley (R.H.)
35	224820	Connecting Arm (R.H.)
36	224920	Bolt
37	225020	Nut
38	125120	Pan Adjuster
39	225220	Stainless Cover (L.H.)
40	225320	Stainless Cover (R.H.)
41	225420	Caution Transfer
42	125520	Drive Input Pulley

KINGCAT 1200mm MOWER



Information given was correct at time of printing.
 However, owing to a continuing development programme,
 Kingcat Industries Ltd. reserves the right to alter
 any specifications at any time.