

**PARTS LIST – DECK ASSY – MODEL 900 & 1100 – CONTINUED**

PARTS NOT ILLUSTRATED		Qty
750303	Decal – Caution	2
750128	Nut – Nyloc M16 – Spindle Assy – Early Model	2
758153	Nut – Nyloc – Spindle Assy – Late Model	2
751211	Washer Tapered – Early model	1
750241	Bush – Tension Arm	2
750207	Circlip – Tension Arm	1
500175	Spacer – Spindle	2
850086	Spacer – Blade – Spindle Bearings	2
500241	Spacer – Double Idler	1
751076	Spacer – Jockey Pulley – Early	1
500315	Mulch Plate – Model 900	1
500295	Mulch Plate – Model 1100	1

**OPERATOR MAINTENANCE**

**CHECK THE FOLLOWING EVERY DAY  
OR EVERY EIGHT HOURS OF MOWING.**

Engine Oil Level -	Remove dipstick and ensure level is correct. If necessary top up with the grade of oil specified in your engine hand book.
Engine Air Filter -	Refer engine handbook.
Belt Tensions -	Refer adjustments.
Battery Level -	Between Max – Min indicators.
Tyre Pressures -	Front 18 p.s.i. Maximum Rear 14 p.s.i. Maximum (20" Tyres) 10 p.s.i. Maximum (22" Tyres) 18 p.s.i. Maximum (18" Tyres)

Grease the following points when finishing mowing. This will ensure any moisture which may have seeped past seals while moving will be dispelled.  
King pins (on front axle assembly) 2 grease nipples.  
Mower deck – 3 grease nipples, Leopard  
2 grease nipples, Lynx

**ADJUSTMENTS**

This operation is best carried out on a level concrete surface.  
**TO TIGHTEN MOWER BELT**  
A drop arm is mounted on either side of the chassis underneath the rear of the engine. Adjuster rods are attached to these arms by way of a threaded rod and locking nuts. Drop the cutting deck to it's lowest height and loosen off the front locking nuts. Tighten the locking nuts evenly on both sides, until the tension achieved is sufficient to eliminate slipping of the belt when you recommence mowing.

**IMPORTANT**

**CLEANING YOUR NEW MOWER**

Ensure the underside of the mower deck, grass chute  
And catcher bag are hosed clean after EACH use.  
This will prevent grass build up and enable your new  
Mower to perform at its best EVERY TIME.  
Always run the Tractor and Mower after washing to  
Remove any excess water from the pulleys and belts.

## INTRODUCTION

Thank you for choosing a new KINGCAT Machine. It has been carefully designed and manufactured under strict quality controls. We are proud of our reputation as a manufacturer of quality machines. However, in order for you to be totally satisfied, it is important that you read this manual before you commence operation.

Your KINGCAT dealer is competent to advise you on the correct methods of safe operation and routine maintenance, and should explain these to you on delivery.

Once you have accepted delivery and become familiar with the operation, it is important that you fill out the warranty form. This must be done WITHIN 14 DAYS of taking delivery and returned to our factory :-

COX INDUSTRIES  
P.O. BOX 6266DC  
ACACIA RIDGE  
QUEENSLAND 4110  
AUSTRALIA

RURAL PACIFIC MARKETING (NZ) LTD  
P.O. BOX 185  
KATIKATI  
NEW ZEALAND

This is important, to ensure that your warranty becomes validated.

## SAFETY

KINGCAT equipment is provided with many safeguards, but statistics prove that most accidents result from operator negligence. To prevent accidents, read the following information carefully BEFORE operating your new machine. Should you have further questions, do not hesitate to ask your KINGCAT dealer.

1. Always disengage mower unit and wait for blades to stop turning before dismounting from tractor.
2. Ensure handbrake is on and mower is disengaged before attempting to start.
3. Never make any adjustments without stopping the engine. If making motor adjustments, wait for it to cool down.
4. Keep other people and animals well clear while operating.
5. Do not operate machine which is not correctly adjusted or is overdue for servicing.
6. It is dangerous to operate the engine in confined areas.
7. Wait for the engine to cool down before refuelling.
8. Never smoke or expose a naked flame near the engine especially when refuelling.

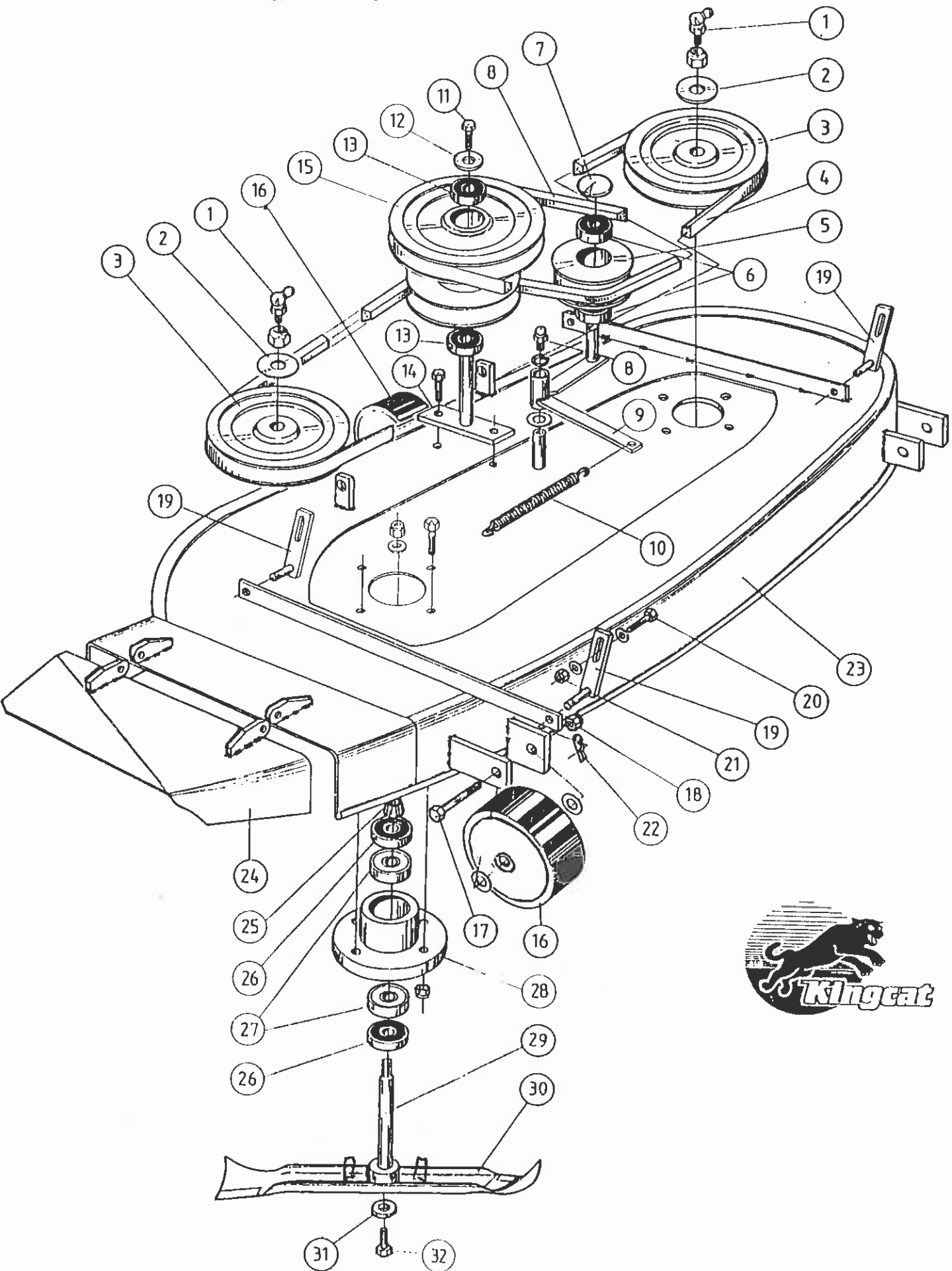
**NEVER CARRY CHILDREN ON THE TRACTOR**



## PARTS LIST – DECK ASSY – MODEL 900 & 1100

1	750216	Nipple – Grease	
2	500176	Washer – Spindle	
3	850137	Pulley – Spindle	
4	750401	V Belt – Model 900	
	500327	V Belt – Model 1100	
5	500303	Jockey – Pulley – NLA use PIFBB02 & 500609	
	PIFBB02	Jockey – Pulley	
	500609	Adapter – Pulley Bush	
6	750242	Bearing – Idler Pulley – Early Models	
7	750382	Plug – Expansion – Early Models	
8	500375	V Belt – P.T.O. Belt – 3 Roller Deck	
	500494	V Belt – P.T.O. Belt – 4 Roller Deck	
9	500095	Arm – Tension	
10	750385	Spring – Tension Arm – Model 900 – Qty 1	
	750385	Spring – Tension Arm – Model 1100 – Qty 2	
11	750266	Screw – Set M10 x 30 HT	
12	750609	Washer	
13	750337	Bearing – Ball	
14	500191	Shaft Assy – Double Idler	
15	500115	Pulley Assy – Double Idler	
16	005478	End Cap – 70mm – 3 Roller Deck	
	500260	Tube – Roller – 70mm – 3 Roller Deck	
	500261	Axle – Roller – 70mm – 3 Roller Deck	
	502146	End Cap – 90mm – 4 Roller Deck	
	502095	Tube – Roller – 90mm – 4 Roller Deck	
	502164	Axle – Roller – 90mm – 4 Roller Deck	
17	500257	Bolt – M10 x 110 – 3 Roller Deck	
	502143	Bolt – M10 x 120 – 4 Roller Deck	
18	750127	Nut – Nyloc M10	
19	500127	Lug Assy – Pan Lift	
20	750139	Screw – Set M10 x 35	
21	750127	Nut – Nyloc – M10	
22	750324	Clip – "R"	
23	500610	Deck – Model 900 – 4 Roller Deck	
	500218	Deck – Model 900 – 3 Roller Deck	NLA
	500611	Deck – Model 1100 – 4 Roller Deck	
	500284	Deck – Model 1100 – 3 Roller deck	NLA
24	500233	Flap Assy – Model 900	
	500289	Flap Assy – Model 1100	
25	500111	Bush – Taper	
26	750282	Seal – Spindle	
27	750338	Bearing	
28	500099	Housing – Spindle	
29	500323	Spindle Assy	
30	911181	Blade 18" – Model 900	
	912144	Blade 21" – Model 1100	
	500325	Blade – Heavy Duty – Model 900	
	500326	Blade – Heavy Duty – Model 1100	
31	500106	Washer – Blade	
32	500324	Blade – Bolt	

Deck Assy - Leopard-Model 900 & 1100



SPECIFICATIONS

LYNX REAR DISCHARGE CATCHER & LEOPARD SIDE DISCHARGE

ENGINE:	Briggs & Stratton "Diamond"	Briggs & Stratton "Vanguard"
Horsepower	13HP	16HP, 18HP & 20HP
Cylinders	1	2
Cycle	4	4
Cooling	Air	Air

MAXIMUM SPEED

Lynx Series I	14 KPH
Lynx Series II	9 KPH
Leopard Hydrogear	10 KPH
Leopard Manual	14 KPH

TYRES:

Front	15 x 600 x 6
Rear	18 x 950 x 8 20 x 10 x 8 22 x 11 x 8

PRESSURES

18psi
18psi
14psi
10psi

FUEL & LUBRICATION:

Fuel	Unleaded
Fuel Tank Capacity	7 Litres
Engine Oil	SAE 30
Engine Oil Capacity	1.4 Litres

Unleaded
7 Litres
SAE 30
1.7 Litres - Spin-on filter

ELECTRICAL SYSTEM:

Battery	1 x 12 Volt
Switch	Key with starter interlock
Ignition	Solid state
Lights	Twin headlights

TRANSMISSION:

Gears	Peerless 700 Series - Lynx
Hydrostatic	Peerless 800 Series - Leopard
Differential	Peerless MST Series - Leopard
	5 Forward, 1 Reverse
	Peerless VST & Hydrogear
	Peerless HD 100 x 1" axle - Lynx

CHASSIS:

Full Chassis - Angle iron & box section

CONTROLS:

Height Adjuster	Right hand side
Blade Engage	Right dashboard
Gear Lever	Right hand side - Lynx
Brake Pedal	Right foot - Lynx I & Leopard
Clutch Pedal	Left foot - Lynx I & Leopard
Break/ Clutch Pedal	Right foot - Lynx series II
Park Brake	Right hand side
Control Pedal	Right foot - leopard Hydrostatic

Left hand side - Leopard  
(manual model Leopard)

TURNING CIRCLE:

470mm Radius

MOWER DECK:

1040mm Twin - Lynx
900mm Twin - Leopard
1100mm Twin - Leopard

Counter rotating blade  
Side discharge  
Side Discharge

GRASS CATCHER:

Capacity	177 Litres - Lynx
----------	-------------------

E & O. E.

## OPERATING INSTRUCTIONS

**STARTING:** (NB: Please observe all safety procedures listed on your Kingcat lawn tractor dash panel prior to starting engine)

1. Manual models : Ensure gear lever is in the neutral position.  
Hydrostatic models : Ensure the foot pedal is in the neutral position.
2. Ensure mower is in the up position.
3. Make sure mower is disengaged.
4. Keep all bystanders well clear and make sure you are comfortably seated.
5. Shift throttle lever to choke position or pull choke knob out (16hp).
6. Turn key to start engine, once engine has started back off throttle lever from the choke position or push choke knob in (16hp).

### MOVING OFF: MANUAL MODELS

1. Shift throttle lever to required position for correct engine speed (for mowing full engine revs).
2. Depress foot pedal and select required gear.
3. Gently release foot pedal until tractor moves off.
4. To change gear, depress foot pedal and change gear when the tractor is stationary.

### STOPPING:

1. Depress clutch pedal, apply foot brake and stop. (Lynx series I & Leopard)  
Depress clutch/brake pedal and stop. (Lynx series II)
2. Reduce engine revs and apply handbrake.
3. To stop engine simply shift the throttle to idle position and turn the key to off position.

### MOVING OFF: HYDROSTATIC MODELS

1. Shift throttle lever to required position for correct engine speed. Note: For mowing use full engine revs)
2. Gently move the foot pedal in the direction of the required travel ( i.e. forward to travel forward) the further the pedal is moved , the faster the tractor will travel.

### STOPPING:

1. To slow down and stop, simply bring the pedal back to the neutral position.

**Note :** It may be necessary to apply light pedal pressure in the opposite direction of travel to slow down while negotiating slopes or in the event of an emergency stop.

### ENGAGING MOWER:

1. Start engine (see above)
2. Set throttle control to half revs and have mower set at full height.
3. Flick blade engagement switch to "on" position.
4. Indicator light will glow when blades are engaged.
5. Once mower has reached operating speed set height to required position.
6. To disengage the mower, reverse the above procedure.

**MOWING:** As mowing conditions vary greatly, it is important that you take special note of this section.

Your mowing attachment has been designed to cope with a large range of grass Types, conditions, lengths and mowing speeds. Always use high engine revs when mowing and regulate your speed with one of the five forward gears (manual) or adjust your speed with the foot pedal (hydrostatic). As a rule, if you have rough ground, long grass, tough grasses (eg rye grass, kikuyu etc...) or if your grass is wet, it is best to reduce speed. Select a reasonably high cutting height – and if necessary take two cuts, the first one high and the next one lower. Your Kingcat dealer is qualified to advise you on how you should be operating your machine – if in doubt ASK.

**Note:** Remember to always depress the clutch fully when changing gears.

## LYNX PARTS LIST – DECK ASSY – RD1040

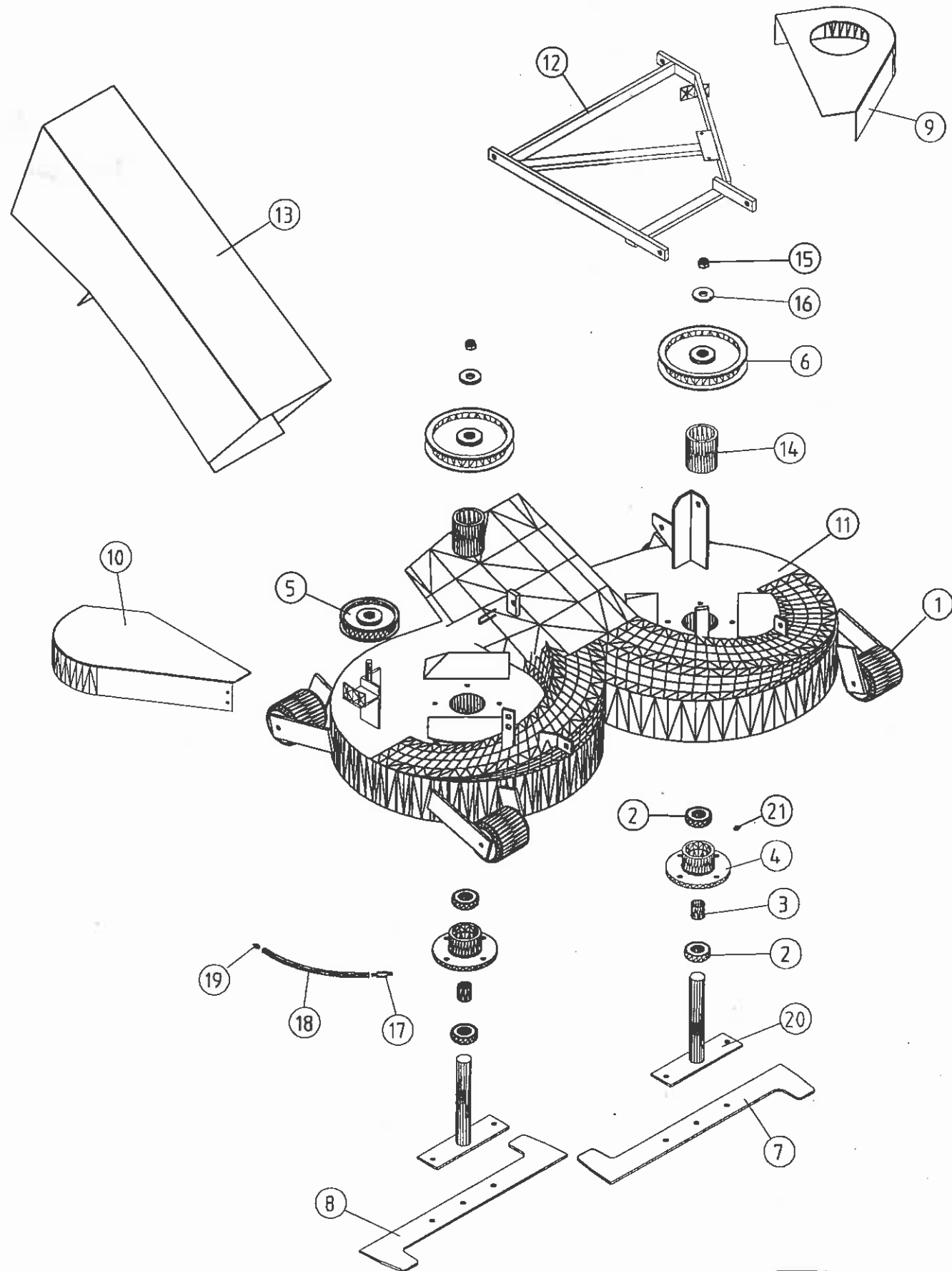
1	502285	90mm Roller Sub Assy	4
2	750338	Bearing 6205	4
	750282	Seal 35-52-7	4
3	758116	Spacer – Bearing	2
4	754148	Housing – Spindle	2
5	502286	Idler Pulley Sub Assy	1
6	850509	Pulley – Spindle 660	2
7	502086	LH Blade – Lynx	1
8	502085	RH Blade – Lynx	1
9	502201	LH Belt Cover	1
10	502202	RH Belt Cover	1
11	502236	Cutter Deck	1
12	502112	Stabilizer	1
13	502154	Chute Assy	1
14	502109	Spacer – Spindle	2
15	758153	Nut – Nyloc M16 x 1.5 zp	2
16	500176	Washer – Spindle Pulley	2
17	750217	Connector – Male 68 x 1/4" x 1/8"	2
18	502186	Tube – Grease 145mm	1
19	502240	Nipple – Grease 1/8" x 45 BSP	1
20	502163	Spindle Assy	2
21	750219	Nipple – Grease M6 x 1 Straight	1

### PARTS NOT ILLUSTRATED

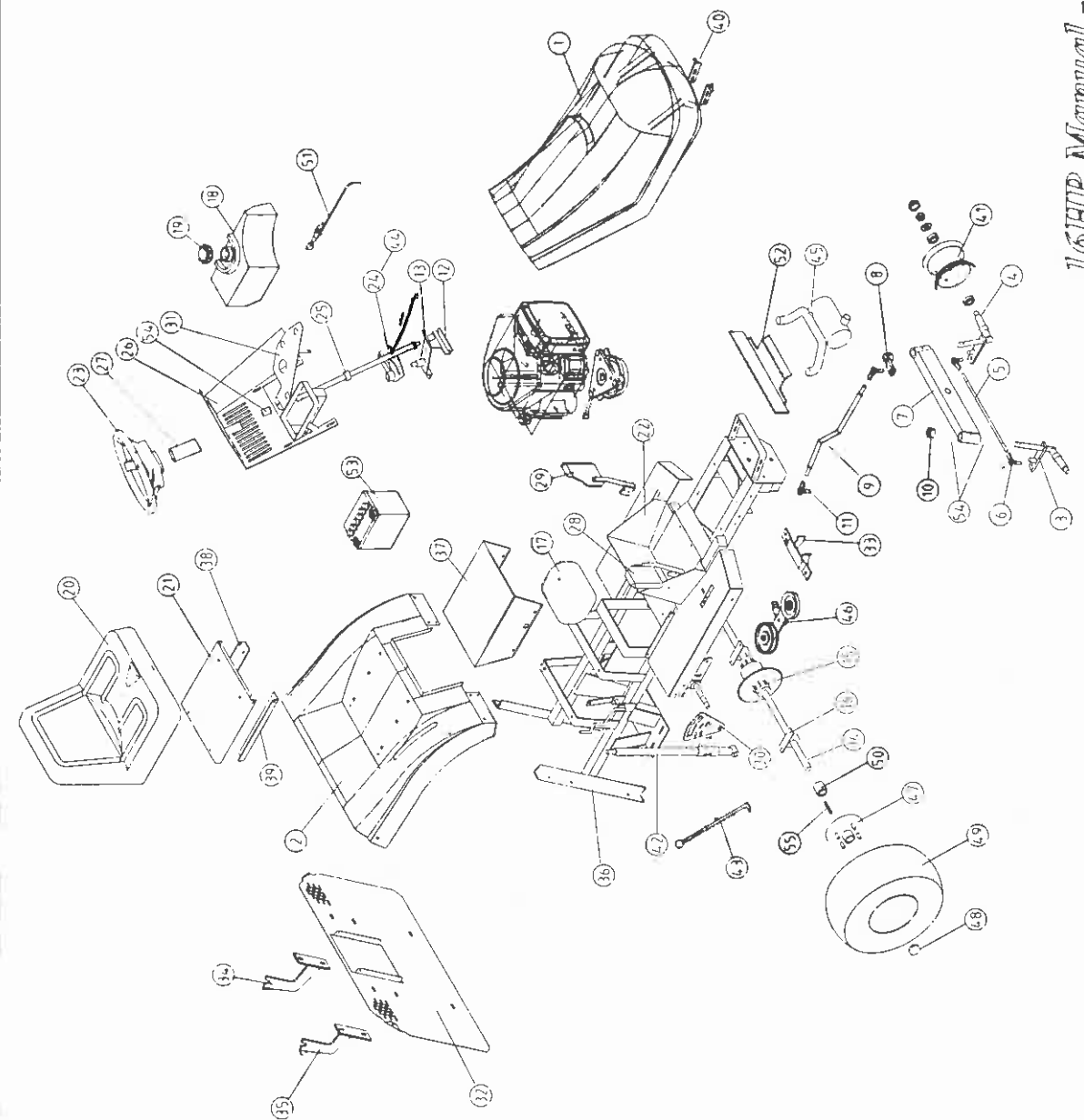
750324	Clip – Grip AG5 (2mm)	4
750320	Links – Lift Chain RC40-11	2
750383	Spring – Pan Return	2
500111	Bush – Taper	2
502091	Adjuster – Pan	2
500127	Lug Assy – Pan Lift	2
502241	Hanger – Deck Front	2
502312	Deflector – Sub Assy	1

### HARDWARE

502108	Washer – Loc 5/8" External ZP (Pan Adjuster)	4
750209	Nut – Hex M16 zp (Pan Adjuster Bolt)	4
750119	Screw – Set M8 x 30 M/S zp (Spindle Housing)	8
502066	Screw – Csk A/Head M10 x 16 BL UNC(idl ply)	1
750266	Screw – Set M10 x 30 HT zp (Blade Bolts)	6
502125	Screw – Set M12 x 30 M/S zp (Con Arm Assy)	1
502072	Screw – Set M12 x 35 M/S zp (Con Arm Assy)	3
502143	Bolt – M10 x 120 M/S zp (Roller)	4
750160	Washer – Flat 1/4" x 5/8" zp (Belt Cover)	10
750145	Washer – Fender 1/4" x 1 1/4" zp (Chute Pivot)	2
750153	Washer – Flat M10 x 21 zp (Roller)	8
750101	Nut – Nyloc M6 zp (Belt Covers & Chute)	10
750102	Nut – Nyloc M8 zp (Spindle Housings)	10
750127	Nut – Nyloc M10 zp (Rollers & Blades)	8
750104	Nut – Nyloc M12 zp (Connecting Arm Assy)	4
750112	Screw – Set M6 x 16 zp (Belt Covers & Chute)	10
750303	Decal – Caution	2
751149	Washer – Csk (Idler Pulley)	1



Deck Assy - RD1040



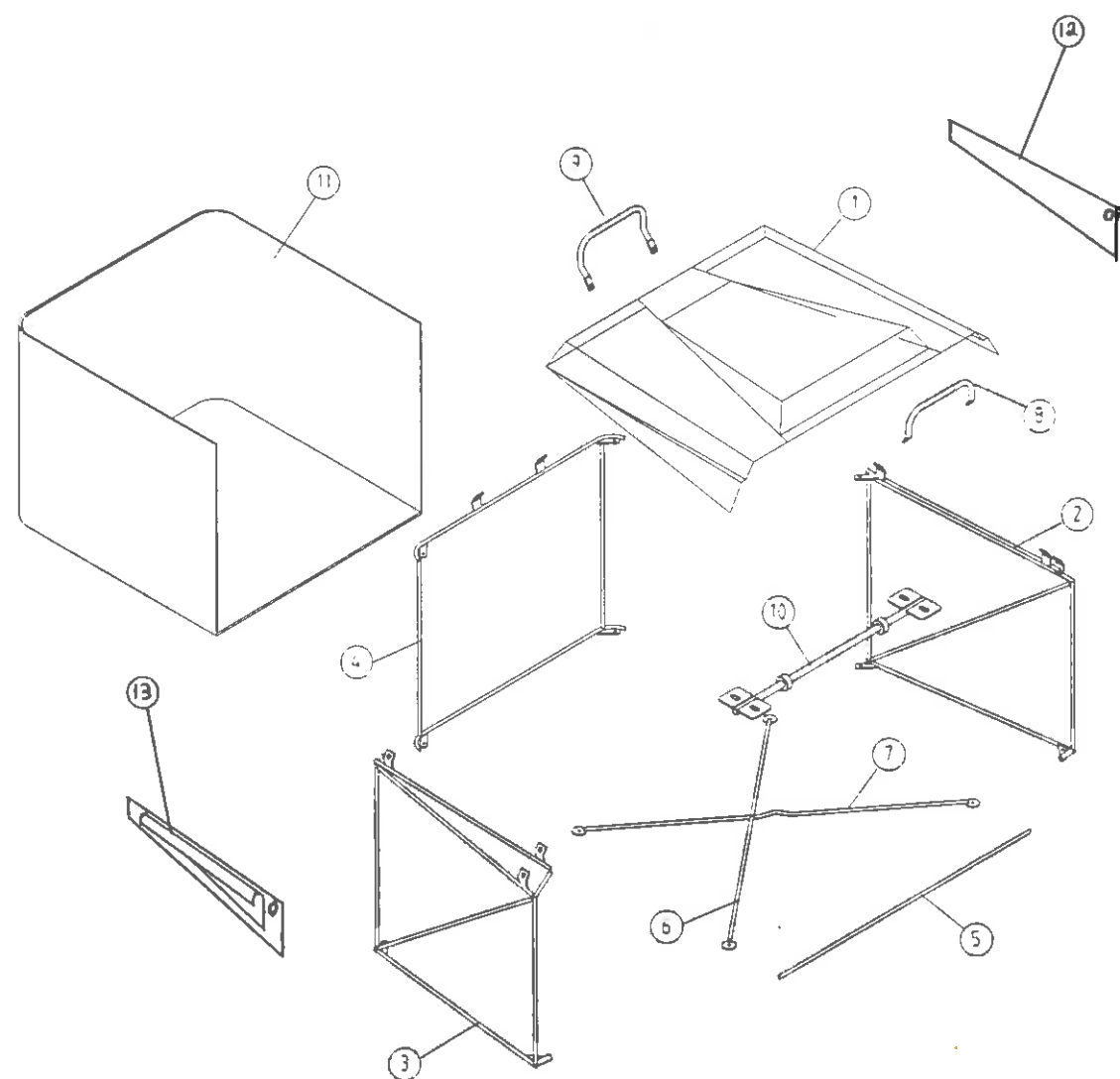
16HP Manual - Lynx

## LYNX & LEOPARD PARTS LIST

1	502251	Bonnet – Sub Assy Complete – High Console
	500430	Bonnet – Bare – Leopard Low Console
	502223	Decal Bonnet LH
	502224	Decal Bonnet Front
	502272	Decal Bonnet RH
	500432	Lens LH – High Console
	500431	Lens RH – High Console
	500432L	Lens LH – Low Console
	500431L	Lens RH – Low Console
	500145	Bulb Head Light
	500460	Grill – Bonnet Vent
	500435	Hinge – Bonnet Series II
2	502252	Rear Guard – Sub Assy Complete – Lynx
	500210G	Rear Guard – Sub Assy Complete – Leopard Gear (add Decal – Lever – Gear Pt No 500561)
	500210H	Rear Guard – Sub Assy Complete – Leopard Hydro (add Decal – Lever – Hydro Pt No 500560)
3	502331 – Fig 1	Stub Axle – RH (Long)
4	502330 – Fig 1	Stub Axle – LH (Long)
5	751631 – Fig 1	Tie Rod
6	750347 – Fig 1	Rod End – 10mm
7	500045 – Fig 1	Beam Assy – Axle
8	500094 – Fig 1	Arm Assy – Steering
9	502096 – Fig 2	Link – Drag – Lynx
	500301 – Fig 2	Link – Drag – Leopard
10	500266 – Fig 1	Collar – Shaft 3/4"
11	500300 – Fig 2 & 3	Rod End – 12mm
12	500457 – Fig 3	Steering Box Assy (Leopard II & Lynx Series II)
13	500297 – Fig 3	Quadrant – Steering
14	502076	Differential – 100-121 – Refer Supplier
15	758103	Sprocket – 45T ASA40
	502414	Sprocket 60T – Lynx
16	502090	Bearing – Rear Axle – Lynx
	502089	Housing – Bearing – Lynx
17	Refer Supplier	Gearbox – Refer Supplier – All Models
18	502204 – Fig 5	Tank – Fuel
	751917	Tank – Fuel – Under Seat – Leopard
	500374 – Fig 5	Brass Fitting 202 x 4 x 2
	750460 – Fig 5	Solvent Tube 6.4mm
19	493988 – Fig 5	Cap – Fuel Tank – Suit Tank 502204 & Tank 751917
20	750768	Seat – High Back
21	500169	Plate – Seat – Lynx
	500169	Plate – Seat – Leopard
22	502264	Lynx Pedestal – Sub Assy
23	502079	Steering Wheel – Lynx
	750766	Steering Wheel – Leopard
24	502145	Shaft – Steering – Lynx
	500423	Shaft – Steering – Leopard
25	500266	Collar – Shaft 3/4"
26	502161	Console – Steering – Lynx

## LYNX PARTS LIST – CATCHER KIT ASSY

1	502253	Top – Catcher Assy	1
2	502254	LH Frame	1
3	502255	RH Frame	1
4	502256	Back Frame	1
5	502206	Front Cross Member	1
6	502258	Straight Brace	1
7	502259	Cross Brace	1
8	502158	Front Handle	1
9	502159	Rear Handle	1
10	502238	Catcher Mount Shaft	1
11	502203	Catcher Bag	1
12	502308	LH Air Deflector	1
13	502309	RH Air Deflector	1
	502230	Decal – Top Catcher Rear	1
	502225	Decal – Catcher LH	1
	502226	Decal – Catcher RH	1
<b><u>HARDWARE</u></b>			
	750111	Screw – Set Hex M6 x 12 zp	2
	750112	Screw – Set M6 x 16 zp	4
	502124	Screw – Button Head M8 x 16 zp	8
	500436	Screw – Button Head M8 x 20 zp	4
	502105	Screw – Button Head M8 x 25 zp	2
	750102	Nut – Nyloc M8 zp	14
	750101	Nut – Nyloc M6 zp	6
	750156	Washer – Flat M8 x 21 zp	10
	750103	Screw – Grub 5/16" x 3/8"	2
	502269	Ties – Cable J355-T30R-W	2



Catcher Kit Assy - Lynx



# LYNX & LEOPARD PARTS LIST CONTINUED

	502161	Console - Steering - High - Leopard
	500424	Console - Steering - Low - Leopard
27	502181	Shroud - Console - Lynx
28	502277	Brake Pedal - Sub Assy
29	502278	Clutch Pedal - Sub Assy
30	502098	Quadrant - Lift
31	502056	Bracket - Tank Assy
32	502148	Panel - Rear - Lynx
33	502188	Guide - Belt - Lynx
	500376	Guide - Belt - Leopard - Manual
	500583	Guide - Belt - Leopard - Hydro
34	502184	LH Pivot Assy - Catcher Mount - Lynx
35	502185	RH Pivot Assy - Catcher Mount - Lynx
36	502002	Chassis - Lynx
	500376	Chassis - Leopard - Manual
	500583	Chassis - Leopard - Hydro
37	502282	Transmission Cover - Lynx
38	500170	LH Mounting - Seat
39	500171	RH Mounting - Seat
40	500048	Plate - Assy Bonnet Mounting
41	500322	Wheel Assy - 15 x 600 x 6 25mm
	750294	Rim 6"
	750295	Tyre 15 x 600 x 6
	750296	Tube 15 x 600 x 6
42	500502 - Fig 8	Lever - Lift MK II
	500161 - Fig 8	Plunger Assy - Lift Lever
	500528 - Fig 8	Pin - Index MK2 Lift Lever
	500197 - Fig 8	Grip - Lift Lever
	500181 - Fig 8	Spacer - Lift Lever
	502322 - Fig 8	Spring
43	502242	Lever - Handbrake Assy
44	502246	Electric Clutch - Sub Assy
45	500253	Muffler
46	502394 - Fig 9	Clutch Arm
	500304 - Fig 9	Idler Pulley F2000-0625
	850117 - Fig 9	Idler Pulley V4480-4814
	500058 - Fig 9	Belt Guide
	752099 - Fig 9	Spacer - Clutch Pulley CH2
	502395 - Fig 9	Washer - Clutch Arm
47	502104	Wheel Hub - Lynx
	752078	Wheel Hub - Leopard
48	750499	Hub Cap
49	500308	Wheel Assy - 20 x 10 x 8 - 4 Stud - Lynx & Leopard Manual
	500138	Rim 8" - 4 Stud
	500608	Tyre 20 x 10 x 8
	500359	Wheel Assy 18-950 x 8 - 4 Stud - Leopard Hydro
	750300	Tyre 18-950 x 8
	750301	Tube 18-950 x 8
50	502111	Hub Spacer - Lynx
	500451	Hub Spacer - Leopard - Manual
	500553	Hub Spacer - Leopard - Hydro



LYNX & LEOPARD PARTS LIST CONTINUED

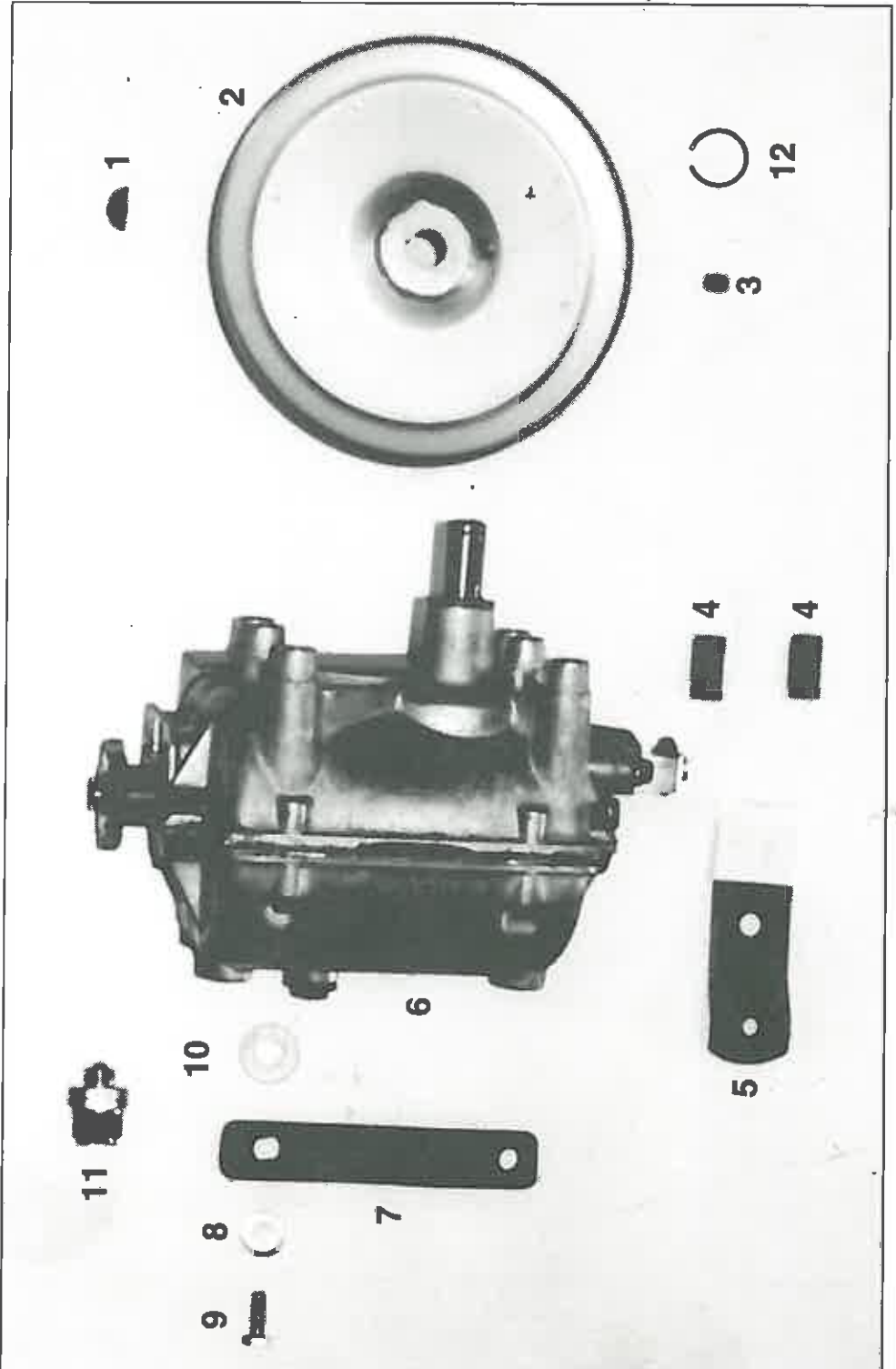
51	500216 – Fig 4	Throttle Control Assy – Universal
52	502386	Heat Deflector – 16hp – Lynx
	500578	Heat Deflector – 16hp – Leopard
53	AM109 – Fig 4	Battery – 12N24-4
54	500321	Bush – Black S13 3/4" x 1" x 1 3/8"
55	502122	Key – Rear Wheel – Lynx
	750613	Key – Rear Wheel – Leopard

PARTS NOT ILLUSTRATED

850192	Knob – 3/8" x 1 1/4" BSW Black (Handbrake)	1
750237	Knob – 1 1/2" x 3/8" BSW Black (Gear lever)	1
750769	M/switch 24813 S4-030D Long (Seat)	1
750273	Ignition Key	1
750770	Spring – Compression Seat	2
750387	Spring – Brake/Clutch Return	1
750388	Spring – Handbrake Return	1
750383	Spring – Pan Return	2
502322	Spring – Lift Lever	1
750432	Key – 1/4" x 1/4" x 40mm Long (Engine pulley)	1
750320	Links – Lift Chain RC40-11 – Lynx	2
502325	Link – H/Duty (Drive chain) – Lynx	1
502103	V Belt – BB89 (PTO) – Lynx	1
500375	V Belt – PTO to suit 3 Roller Deck – Leopard	1
500494	V Belt – PTO to suit 4 Roller Deck – Leopard	1
750644	Sleeve – Flat Bosch TB317CS	2
750362	Ring Terminal	1
750402	Terminal – Bosch TB3217Cs	1
500063	Lead – Negative Earth (Battery)	1
502073	Loom – Extension – Lynx	1
500059D	Loom – Extension – Leopard – Manual	1
500468	Loom – Extension – Leopard – Hydro	1
750328	Clamp – Cable H909/150	2
751170	Spacer – Seat	9
502339	Cap – Seat Spring	2
750545	Chain Adjuster Sub Assy – Lynx	2
502221	Decal – Instrument Panel	1
502233	Velcro – Self Adhesive Bonnet Catch – Loop	1
502234	Velcro – Self Adhesive Bonnet Catch – Hook	1
502267	Light Wiring Assy – Bonnet	1
502068	Chain – Lift – Lynx	2
502388	Chain – Drive (Heavy) – Lynx I	1
502069	Chain – Drive (Standard) – Lynx I	1
502415	Chain – Drive (Heavy) – Lynx II	1
502194	Adjuster – R/Axle Double – Lynx	1
502195	Adjuster – R/Axle Single – Lynx	2
502177	Mat – Foot LH – Lynx I – with Separate Clutch	1
502417	Mat – Foot LH – Lynx II – With no Pedal	1
502178	Mat – Foot RH – Lynx I & II	1
502183	Mat – Pedal RH – Lynx I & II	1
502182	Mat – Pedal LH – Lynx I	1
500498	Pulley – Engine – Manual Leopard & Lynx	1

FIG 10

GEAR BOX ASSEMBLY



GEAR BOX ASSEMBLY

1.	750405	KEY WOODRUFF
2.	850087	PULLEY INPUT 185mm LYNX UP TO SERIAL NO. 0597031
	502329	PULLEY INPUT 150mm LYNX FROM SERIAL NO. 0597031
	500217	PULLEY TRANSAXLE LEOPARD
3.	750103	SCREW GRUB
4.	502341	BRAKE PAD HEAVY DUTY
5.	502279	BRAKE LEVER SHORT LYNX
6.		GEAR BOX REFER SUPPLIER
7.	500054B	ARM SELECTOR LYNX
	500054	ARM SELECTOR LEOPARD MANUAL
8.	750092	WASHER
9.	750177	SET SCREW
10.	750413	WASHER HARDENED
11.	750197	SWITCH NEUTRAL
12.	570207	CIRCLIP



FIG 9

## CLUTCH ARM ASSEMBLY

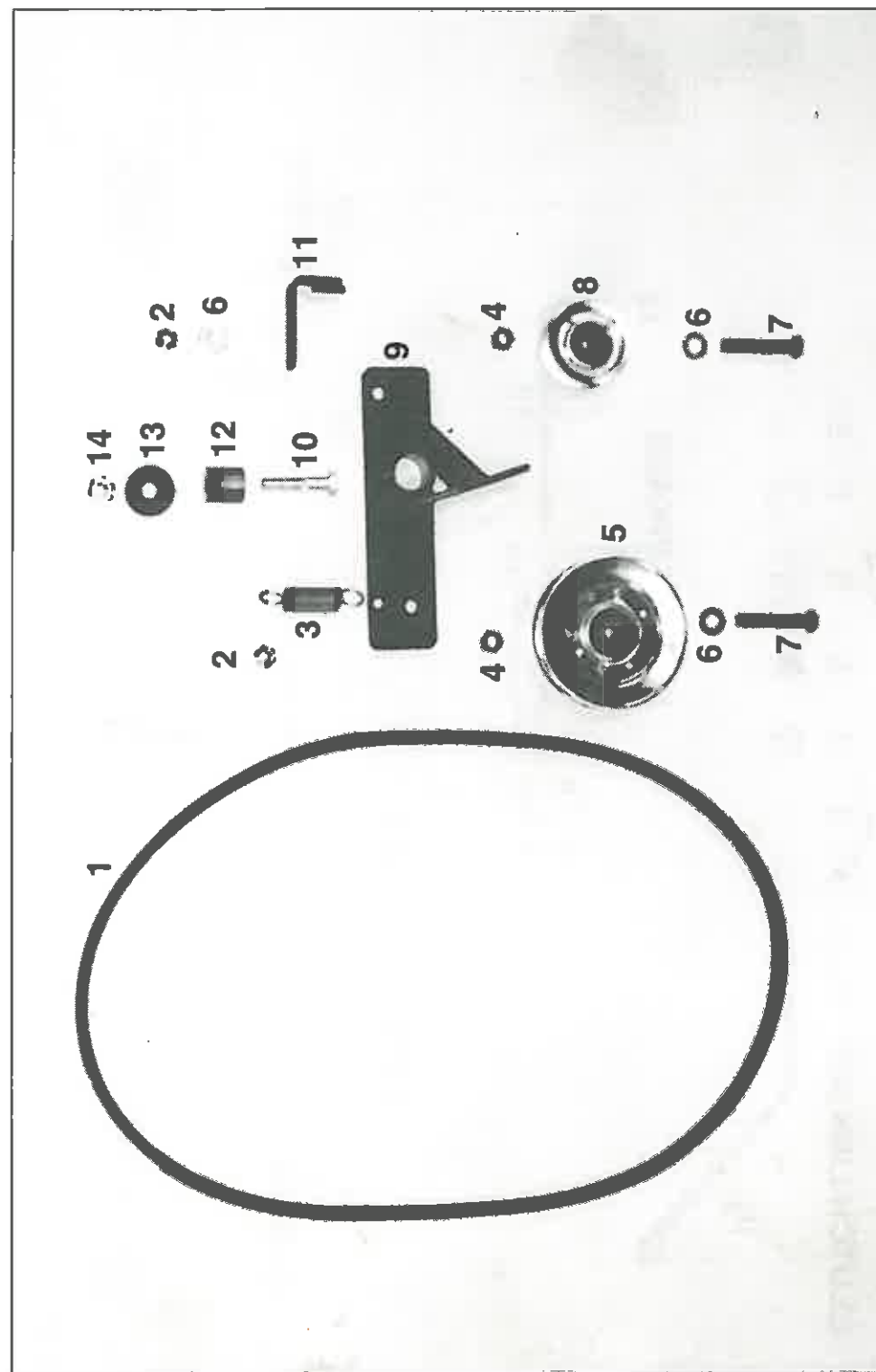


ILLUSTRATION DEPICTS LYNX ASSEMBLY

## CLUTCH ARM ASSEMBLY

1. 502189	V BELT LYNX UP TO SERIAL 597030	4553
502333	V BELT LYNX FROM SERIAL 597031	
500183	V BELT LEOPARD MANUAL	
500454	V BELT LEOPARD HYDRO	
2. 750135	NUT NYLOC	
3. 750387	SPRING LYNX	
750386	SPRING LEOPARD HYDRO	
750387	SPRING LEOPARD MANUAL	
4. 752099	SPACER	
5. 850117	PULLEY	
6. 750153	WASHER	
7. 500495	BOLT	
8. 500304	PULLEY	
9. 502394M	ARM CLUTCH LYNX	
500089	ARM CLUTCH LEOPARD	
10. 750176M	BOLT LYNX 10x50	
750736	BOLT LEOPARD	
11. 500058	GUIDE BELT	
12. 502396M	SHAFT	
13. 502395M	WASHER LYNX	
500490	WASHER LEOPARD	
14. 750127M	NUT NYLOC	
502398	UPGRADE KIT - includes all numbers with suffix M	

## LYNX &amp; LEOPARD PARTS LIST CONTINUED

502011	Bracket - Electric Clutch - Lynx	1
500500	Bracket - Electric Clutch - Leopard	1
502075	Link - Gear - Lynx	1
500172	Link - Gear - Leopard	1
500128	Pin - Handbrake (3/8" Diameter)	1
500129	Lever - Handbrake (1/4" Diameter)	1
500443	Decal - Hydrostatic - Leopard	2
502228	Decal - Guard Rear LH - Lynx	1
502229	Decal - Guard Rear RH - Lynx	1
500428	Decal - Leopard Series II	2
502222	Decal - RD1040 - Lynx	2
502059	Decal - 16HP	1
500606	Decal - 18HP	1
500607	Decal - 20HP	1
758038	Decal - Gear Indicator - Lynx	1
500560	Decal - Park-Drive - Leopard Hydro	1
500561	Decal - Gear Indicator Leopard Manual	1
500467	Decal - Cat Kingcat	1
500312	Decal - Vanguard (Ex B & S)	1
500484	Decal - Rear Guard - Kit - Leopard	1
500114	Pipe - Oil Drain	1
751186	Plug - Oil Drain	1
500373	Restraint - Bonnet	1
502193	Grommet - Brake Adjustment - Lynx	1
502091	Pan adjuster - Bolt - Lynx	2
500200	Spacer - Quadrant - Lynx	2
500200	Spacer - Quadrant - Leopard	1
500151	Pan Adjuster - Bolt - Leopard	2
500459	Wear Plate - Leopard	2
500196	Toggle - Pan lift Tie Rod - Leopard	2
500053	Tie Rod - Pan Lift - Leopard	2
500411	Bracket - brake Rod - Leopard	1
500469	Stiffener - Rear Cowl - Front off - Leopard	1
750609	Washer - engine - Leopard	1
500215	Mat - Foot - Manual - Leopard	1
500445	Mat - Foot - Hydro - Leopard	1
502183	Mat - Pedal - RH - Leopard	1
502182	Mat - Pedal - LH - Manual - Leopard	1
750389	Spring - Brake Rod - Leopard	1
750193	Circlip - Rear Axle - Leopard	2
750200	Pin - Steering - Leopard	1

## 13HP SPARES

502227	Decal 13HP
500313	Insulation - Heat (13HP)
502270 - Fig 5	Sub Assy Lynx 13HP Fuel Line
502060 - Fig 5	Bracket - Tank Assy 13HP - Lynx

502142

engine bolt 7/16 x 3 1/2 UNF

502064

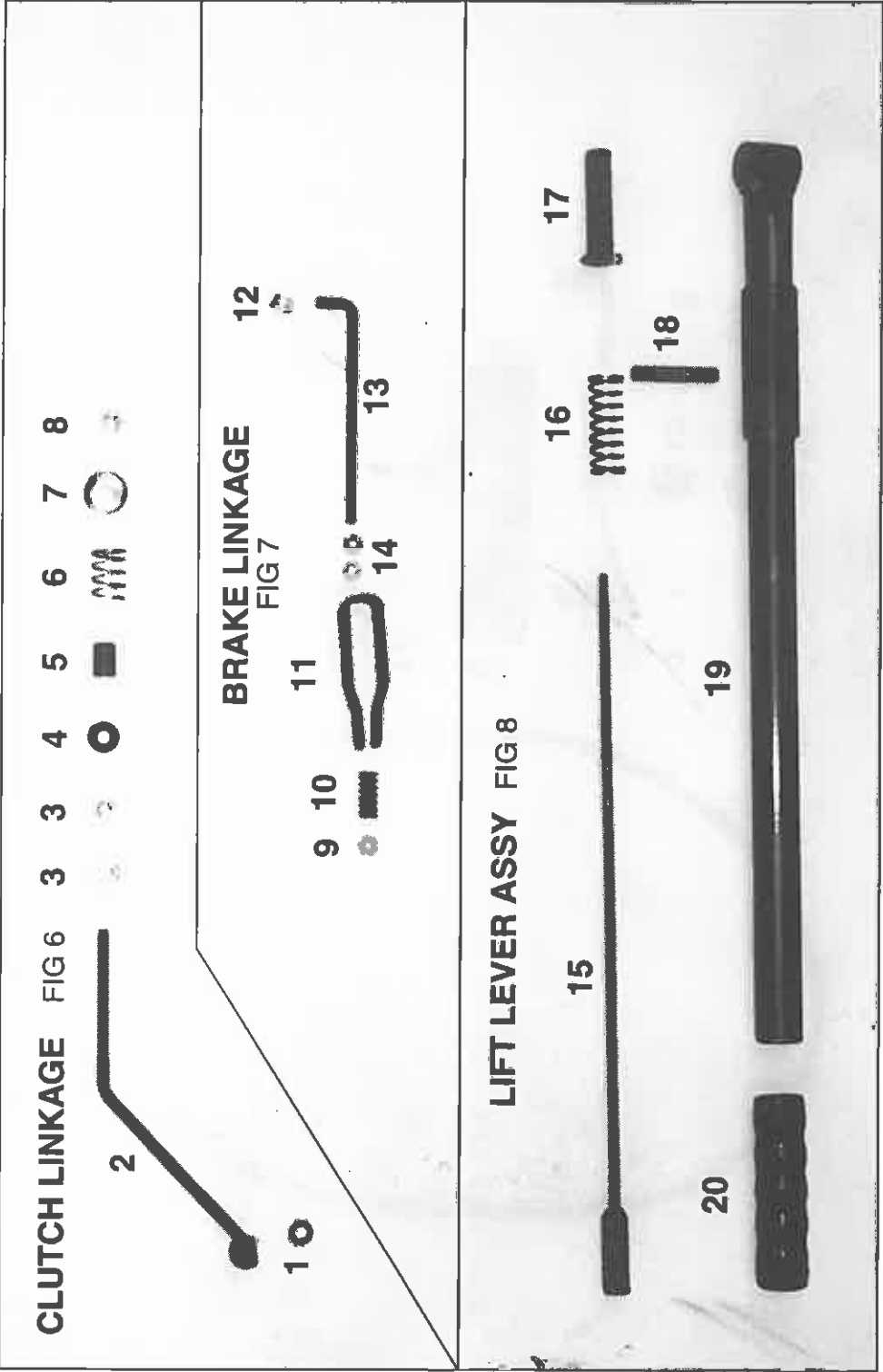
washer - electric clutch

LYNX & LEOPARD PARTS LIST CONTINUED

HARDWARE

750772	Screw – Slot 1/8" x 3/4" MT zp (Micro Switch)	2
750111	Screw – Set Hex M6 x 12 zp	2
750112	Screw – Set M6 x 16 zp	7
750113	Screw – Set Hex M6 x 20 zp	2
502124	Screw – Button Head M8 x 16 zp (G- Box Cover and Guard)	6
750181	Screw – Set Hex M8 x 16 zp	4
750116	Screw – Set M8 x 20 M/S zp	16
750139	Screw – Set M10 x 35 M/S zp	2
502070	Screw – Set Hex M10 x 16 M/S zp	6
750166	Screw – Set Hex M12 x 20 M/S zp (Chain Adjuster)	2
758013	Screw – Set 5/16" x 1" UNC HT zp (Gear Box Mount)	4
750121	Bolt –Hex M8 x 40 HT zp (Engine Mount)	4
500244	Bolt – M16 x 75 M/S zp (Axle Pivot)	1
750771	Nut – Hex 1/8" MT zp (Micro Switch)	2
750109	Nut – Hex 1/4" NC zp (Brake Conlink)	2
750133	Nut – Nyloc 1/4" UNC zp (Brake Conlink)	1
750101	Nut – Nyloc M6 zp	7
750188	Nut – Hex M6 HT zp	4
750129	Nut – Hex M8 zp	2
750102	Nut – Nyloc M8 zp	39
750393	Nut – Wheel 7/16" NF	8
750105	Nut – Hex M10 Mach zp	5
750127	Nut – Nyloc M10 zp	10
750128	Nut – Nyloc M16 zp (Steering Box & Stub Axles)	3
758153	Nut – Nyloc M16 x 1.5 zp (Lift Lever)	1
750160	Washer – Flat 1/4" x 5/8" zp	1
850121	Washer – Flat 5/8" x 1 3/8" zp (S-Box & StubAxles)	2
750156	Washer – Flat M8 x 21 zp	34
750157	Washer – Spring M8 zp	2
750153	Washer – Flat M10 x 21 zp	9
750154	Washer – Flat 1/2" x 1" zp	2
758164	Washer – Starloc 3/8" Plain (Gear Lever Link)	2
750203	Washer – Starloc 1/4" zp (Break Con Link)	2
750199	Washer – Starloc 5/16" Plain Int	1
754116	Circlip – 25mm Ext (Rear Axle)	2
750197	Switch – Gear Box Neutral	1
750200	Pin – Steering Wheel	1
750134	Nut – Nyloc 5/16"unc (Seat Mounting)	9
850505	Socket – Cap M6 x 16 Black (Steering Column)	1
750609	Washer – Engine	1

FIG 6, 7 & 8



CLUTCH LINKAGE	
502390	UPGRADE KIT
1. • 750199	WASHER LOCK
2. • 502135	LINK CLUTCH LYNX
500057	LINK CLUTCH LEOPARD
3. • 750129	NUT
4. • 500489	WASHER BALL
5. 500488	SLEEVE
6. • 502411	SPRING
7. • 500501	WASHER CUP
8. • 750102	NUT NYLOC
BRAKE LINKAGE	
9. 750133	NUT NYLOC
10. 750389	SPRING
11. 750512	CLEVIS
12. 750203	WASHER-LOCK
13. 502067	LINK LYNX
500056	ROD BRAKE LEOPARD
14. 750109	NUT
LIFT LEVER ASSEMBLY	
15. 500161M	PLUNGER MODIFIED
16. 502322	SPRING
17. 500181	SPACER
18. 500528	PIN-INDEX MODIFIED
19. 500502	LEVER-LIFT
20. 500197	GRIP

1.	502056	BRACKET TANK 16HP
	502060	BRACKET TANK 13HP
2.	500374	FITTING BRASS 90°
3.	750331	CLIP HOSE
4.	750460	HOSE FUEL
	502270	HOSE FUEL 13HP
5.	502082	SCREW
6.	750145	WASHER
7.	493988	CAP FUEL
8.	502204	TANK

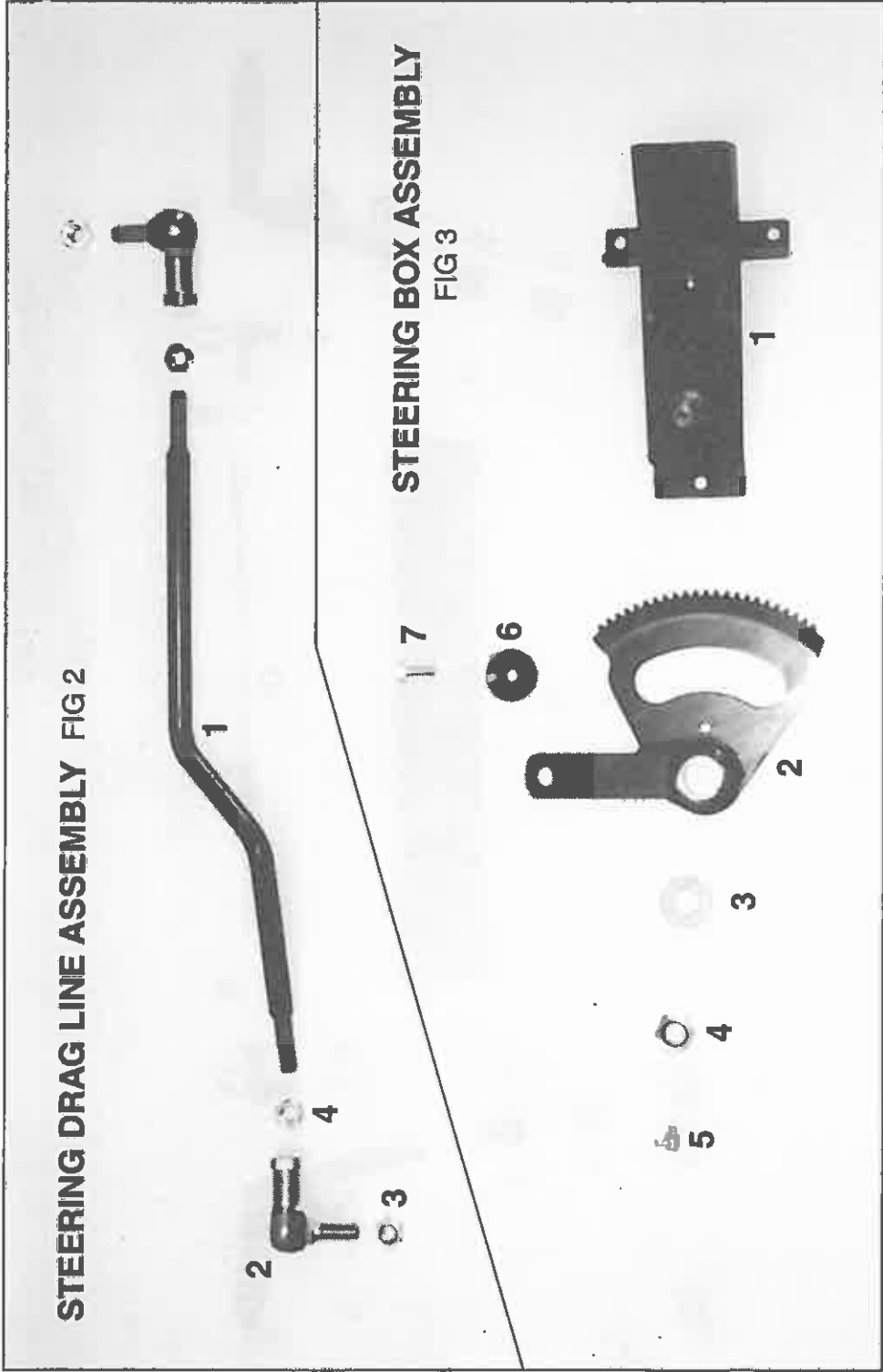
FIG 1

This diagram shows an exploded view of a mechanical assembly. The components are numbered as follows:

- 1**: A long, rectangular main body with a central hole.
- 2**: A small circular pin or bush.
- 3**: A small rectangular plate or washer.
- 4**: A small L-shaped bracket.
- 5**: Two small cylindrical bushings or spacers.
- 6**: A large L-shaped bracket or handle.
- 7**: A small circular pin or bush.
- 8**: A small circular pin or bush.
- 9**: Two long, thin rods or shafts.
- 10**: A long, thin rod or shaft.
- 11**: Two small L-shaped brackets or pins.
- 12**: A small L-shaped bracket or handle.
- 13**: A small circular pin or bush.
- 14**: A small circular pin or bush.

1.	500045	BEAM AXLE
2.	500142	BUSH
3.	750249	PIN TENSION
4.	500094	ARM STEERING
5.	500321	BUSH
6.	502330	STUB AXLE L.H.
7.	750219	NIPPLE GREASE
8.	750394	NUT NYLOC
9.	750189	NUT
10.	751631	TIE ROD
11.	750347	ROD END
12.	502331	STUB AXLE R.H.
13.	750103	SCREW GUB
14.	500266	COLLAR

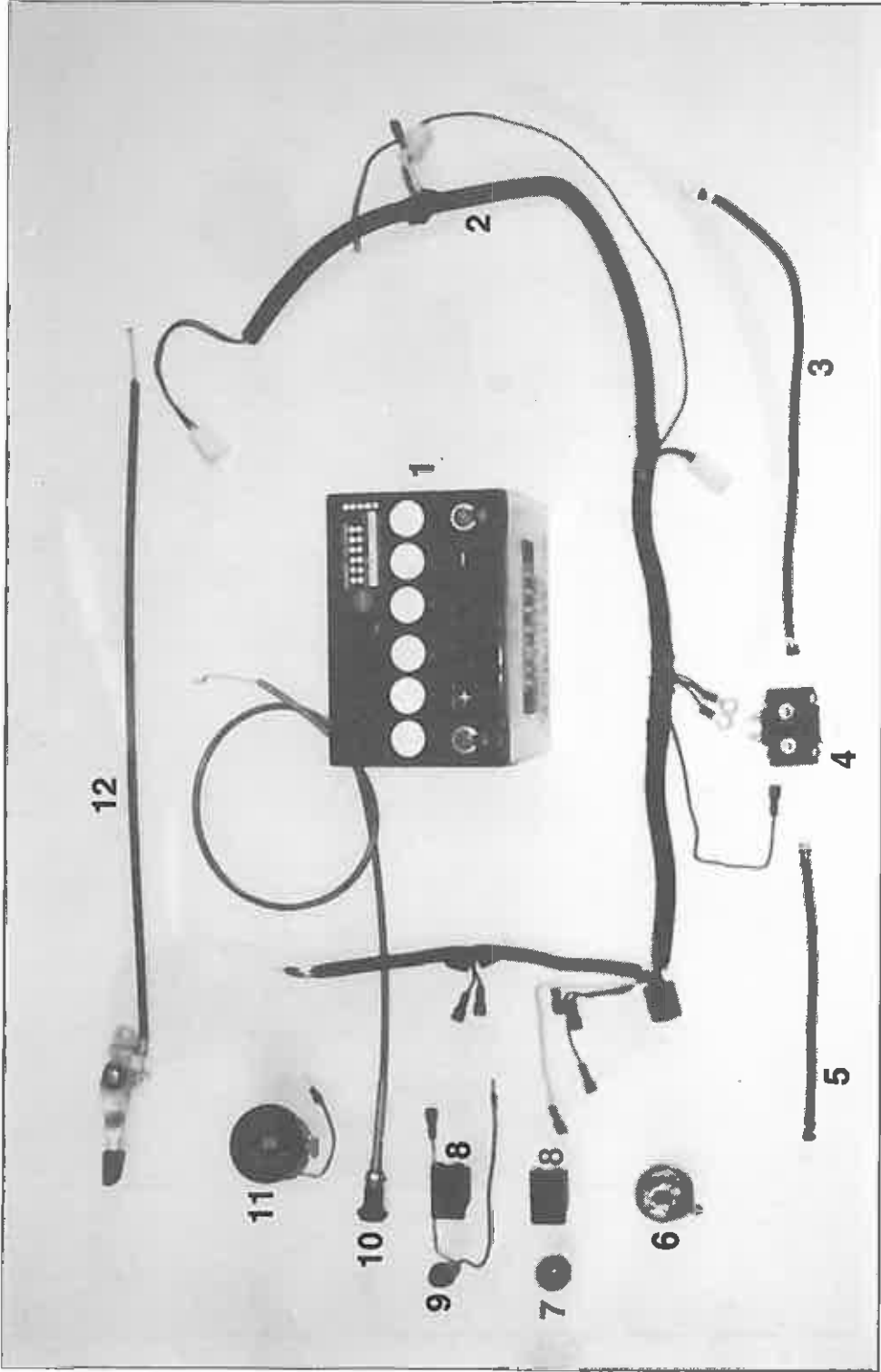
FIG 2 & 3



SE 6

SE 6

FIG 4  
CONSOLE PARTS



## PRE-DELIVERY CHECK

Tractor Model No. ....

Tractor S/No.....

Purchasers Name.....

Dealers Name.....

Pre-Delivery Date.....Dealers Signature.....

## 1 LUBRICATION

- |  |                          |
|--|--------------------------|
|  | Grease all grease points |
|  | Check engine oil level   |
|  | Check fuel level         |

### 3 FINAL INSPECTION

- |  |                           |
|--|---------------------------|
|  | Paintwork                 |
|  | Tools and engine handbook |
|  | Operators Manual          |

## 2 GENERAL CHECKS

- |                          |                                   |
|--------------------------|-----------------------------------|
| <input type="checkbox"/> | Clutch adjustment                 |
| <input type="checkbox"/> | Brake adjustment                  |
| <input type="checkbox"/> | Steering adjustment               |
| <input type="checkbox"/> | Battery electrolyte level         |
| <input type="checkbox"/> | Idle speed                        |
| <input type="checkbox"/> | Top speed                         |
| <input type="checkbox"/> | Belt tensioners                   |
| <input type="checkbox"/> | Tyre pressures                    |
| <input type="checkbox"/> | Check all bolts etc for tightness |
| <input type="checkbox"/> | Operation of choke throttle       |
| <input type="checkbox"/> | Stop control                      |
| <input type="checkbox"/> | Cutter belt tension               |

4 Record any accessories fitted :

---

---

---

---

---

---

---

---

---

---

Servicing Mechanic  
Date \_\_\_\_\_

## DELIVERY AND DEMONSTRATION GUIDE

When you receive your new Lawn Tractor ensure your dealer has carefully explained the following points -

- |                                       |   |
|---------------------------------------|---|
| 1. Starting procedure                 | 5 Mowing speeds and mower heights           |
| 2 Foot pedal and hand brake operation | 6 Belt tensioning                           |
| 3 Operation of all controls -         | 7 Location of engine and tractor serial nos |
| - key starter                         | 8 Regular maintenance procedures            |
| - throttle                            | Air filter                                  |
| - foot pedals                         | Oil Drain and level points                  |
| - hand brake                          | Fuel filters                                |
| - mower engagement switch or lever    | Greasing points                             |
| (which ever is fitted)                |   |
| - steering                            |   |
| - micro switch functions              |   |
| 4 Use of the discharge flap           |   |

WARRANTY POLICY

PRODUCT.....SERIAL NO.....

PURCHASER.....DEALER.....

DATE PURCHASED.....

Your KINGCAT machine has been carefully assembled and tested before leaving our factory. However, due to circumstances beyond our control, and the human elements (everybody makes mistakes sometimes), we occasionally have a problem which is our fault. We have therefore guaranteed that for a period of 12 months (commercial use 90 days) from the date that you (the first owner) take delivery of this machine, it will give you trouble free service. This warranty covers all parts and labour necessary to bring your machine up to original condition should the problem be caused by either a faulty part or workmanship.

To be fair, however, we DO NOT guarantee things over which we do not have control. Generally these are:  
Normal wear and tear, neglect, accident, misuse, non-compliance with operating instructions, unauthorised installation, alteration or modification, unauthorised repairs, substitution of parts or the fitting and use of any attachment which is not recommended.

The warranty will be null and void if:

- 1. We don't receive the warranty/installation certificate signed by the owner within 14 days of purchase/delivery.
- 2. The machine is put to some use for which it was not designed.
- 3. Warranty claims are not advised immediately.

We do not agree to cover the purchaser for any losses or damage which occur as a result of any breakdown. We reserve the right to make changes to our machines without bringing any existing machines up to the same specification.

Any warranty work must be carried out by our authorised dealers who must comply with warranty procedure.



MULTI DISCHARGE DECK MODEL 504000  
MD 1335

