

# Parts Book

## Ride-On Mower



**LYNX**  
Series I & II

**LEOPARD**  
Series II

# PRE-DELIVERY CHECK

Tractor Model No. ....

Tractor S/No.....

Purchasers Name.....

Dealers Name.....

Pre-Delivery Date.....Dealers Signature.....

- 1 LUBRICATION**
- Grease all grease points
  - Check engine oil level
  - Check fuel level

- 2 GENERAL CHECKS**
- Clutch adjustment
  - Brake adjustment
  - Steering adjustment
  - Battery electrolyte level
  - Idle speed
  - Top speed
  - Belt tensioners
  - Tyre pressures
  - Check all bolts etc for tightness
  - Operation of choke throttle
  - Stop control
  - Cutter belt tension

- 3 FINAL INSPECTION**
- Paintwork
  - Tools and engine handbook
  - Operators Manual

- 4 Record any accessories fitted :**
- 
- 
- 
- 
- \_\_\_\_\_  
Servicing Mechanic
- \_\_\_\_\_  
Date

## DELIVERY AND DEMONSTRATION GUIDE

When you receive your new Lawn Tractor ensure your dealer has carefully explained the following points -

- |  |  |
|--|--|
| <ul style="list-style-type: none"> <li>1. Starting procedure</li> <li>2. Foot pedal and hand brake operation</li> <li>3. Operation of all controls -             <ul style="list-style-type: none"> <li>- key starter</li> <li>- throttle</li> <li>- foot pedals</li> <li>- hand brake</li> <li>- mower engagement switch or lever (which ever is fitted)</li> <li>- steering</li> <li>- micro switch functions</li> </ul> </li> <li>4. Use of the discharge flap</li> </ul> | <ul style="list-style-type: none"> <li>5. Mowing speeds and mower heights</li> <li>6. Belt tensioning</li> <li>7. Location of engine and tractor serial nos</li> <li>8. Regular maintenance procedures             <ul style="list-style-type: none"> <li>Air filter</li> <li>Oil Drain and level points</li> <li>Fuel filters</li> <li>Greasing points</li> </ul> </li> </ul> |
|--|--|

# WARRANTY POLICY

PRODUCT.....SERIAL NO.....

PURCHASER.....DEALER.....

DATE PURCHASED.....

Your KINGCAT machine has been carefully assembled and tested before leaving our factory. However, due to circumstances beyond our control, and the human elements (everybody makes mistakes sometimes), we occasionally have a problem which is our fault. We have therefore guaranteed that for a period of 12 months (commercial use 90 days) from the date that you (the first owner) take delivery of this machine, it will give you trouble free service. This warranty covers all parts and labour necessary to bring your machine up to original condition should the problem be caused by either a faulty part or workmanship.

To be fair, however, we DO NOT guarantee things over which we do not have control. Generally these are:

Normal wear and tear, neglect, accident, misuse, non-compliance with operating instructions, unauthorised installation, alteration or modification, unauthorised repairs, substitution of parts or the fitting and use of any attachment which is not recommended.

The warranty will be null and void if :

1. We don't receive the warranty/installation certificate signed by the owner within 14 days of purchase/delivery.
2. The machine is put to some use for which it was not designed.
3. Warranty claims are not advised immediately.

We do not agree to cover the purchaser for any losses or damage which occur as a result of any breakdown. We reserve the right to make changes to our machines without bringing any existing machines up to the same specification.

Any warranty work must be carried out by our authorised dealers who must comply with warranty procedure.



# OPERATOR MAINTENANCE

**CHECK THE FOLLOWING EVERY DAY  
OR EVERY EIGHT HOURS OF MOWING.**

- Engine Oil Level - Remove dipstick and ensure level is correct. If necessary top up with the grade of oil specified in your engine hand book.
- Engine Air Filter - Refer engine handbook.
- Belt Tensions - Refer adjustments.
- Battery Level - Between Max – Min indicators.
- Tyre Pressures - Front 18 p.s.i. Maximum
  - Rear 14 p.s.i. Maximum (20" Tyres)
  - 10 p.s.i. Maximum (22" Tyres)
  - 18 p.s.i. Maximum (18" Tyres)

Grease the following points when finishing mowing. This will ensure any moisture which may have seeped past seals while moving will be dispelled.

King pins (on front axle assembly) 2 grease nipples.

Mower deck – 3 grease nipples, Leopard

2 grease nipples, Lynx

## ADJUSTMENTS

This operation is best carried out on a level concrete surface.

### TO TIGHTEN MOWER BELT

A drop arm is mounted on either side of the chassis underneath the rear of the engine.

Adjuster rods are attached to these arms by way of a threaded rod and locking nuts.

Drop the cutting deck to it's lowest height and loosen off the front locking nuts.

Tighten the locking nuts evenly on both sides, until the tension achieved is sufficient to eliminate slipping of the belt when you recommence mowing.

### IMPORTANT

#### CLEANING YOUR NEW MOWER

Ensure the underside of the mower deck, grass chute

And catcher bag are hosed clean after EACH use.

This will prevent grass build up and enable your new

Mower to perform at its best EVERY TIME.

Always run the Tractor and Mower after washing to

Remove any excess water from the pulleys and belts.

## **INTRODUCTION**

Thank you for choosing a new KINGCAT Machine. It has been carefully designed and manufactured under strict quality controls. We are proud of our reputation as a manufacturer of quality machines. However, in order for you to be totally satisfied, it is important that you read this manual before you commence operation.

Your KINGCAT dealer is competent to advise you on the correct methods of safe operation and routine maintenance, and should explain these to you on delivery.

Once you have accepted delivery and become familiar with the operation, it is important that you fill out the warranty form. This must be done WITHIN 14 DAYS of taking delivery and returned to or factory :-

COX INDUSTRIES  
P.O. BOX 6266DC  
ACACIA RIDGE  
QUEENSLAND 4110  
AUSTRALIA

RURAL PACIFIC MARKETING (NZ) LTD  
P.O. BOX 185  
KATIKATI  
NEW ZEALAND

This is important, to ensure that your warranty becomes validated.

## **SAFETY**

KINGCAT equipment is provided with many safeguards, but statistics prove that most accidents result from operator negligence. To prevent accidents, read the following information carefully BEFORE operating your new machine. Should you have further questions, do not hesitate to ask your KINGCAT dealer.

1. Always disengage mower unit and wait for blades to stop turning before dismounting from tractor.
2. Ensure handbrake is on and mower is disengaged before attempting to start.
3. Never make any adjustments without stopping the engine. If making motor adjustments, wait for it to cool down.
4. Keep other people and animals well clear while operating.
5. Do not operate machine which is not correctly adjusted or is overdue for servicing.
6. It is dangerous to operate the engine in confined areas.
7. Wait for the engine to cool down before refuelling.
8. Never smoke or expose a naked flame near the engine especially when refuelling.

**NEVER CARRY CHILDREN ON THE TRACTOR**



# OPERATING INSTRUCTIONS

**STARTING: (NB: Please observe all safety procedures listed on your Kingcat lawn tractor dash panel prior to starting engine)**

1. Manual models : Ensure gear lever is in the neutral position.  
Hydrostatic models : Ensure the foot pedal is in the neutral position.
2. Ensure mower is in the up position.
3. Make sure mower is disengaged.
4. Keep all bystanders well clear and make sure you are comfortably seated.
5. Shift throttle lever to choke position or pull choke knob out (16hp).
6. Turn key to start engine, once engine has started back off throttle lever from the choke position or push choke knob in (16hp).

## MOVING OFF: MANUAL MODELS

1. Shift throttle lever to required position for correct engine speed (for mowing full engine revs).
2. Depress foot pedal and select required gear.
3. Gently release foot pedal until tractor moves off.
4. To change gear, depress foot pedal and change gear when the tractor is stationary.

## STOPPING:

1. Depress clutch pedal, apply foot brake and stop. (Lynx series I & Leopard)  
Depress clutch/brake pedal and stop. (Lynx series II)
2. Reduce engine revs and apply handbrake.
3. To stop engine simply shift the throttle to idle position and turn the key to off position.

## MOVING OFF: HYDROSTATIC MODELS

1. Shift throttle lever to required position for correct engine speed. Note: For mowing use full engine revs)
2. Gently move the foot pedal in the direction of the required travel ( i.e. forward to travel forward) the further the pedal is moved , the faster the tractor will travel.

## STOPPING:

1. To slow down and stop, simply bring the pedal back to the neutral position.

**Note :** It may be necessary to apply light pedal pressure in the opposite direction of travel to slow down while negotiating slopes or in the event of an emergency stop.

## ENGAGING MOWER:

1. Start engine (see above)
2. Set throttle control to half revs and have mower set at full height.
3. Flick blade engagement switch to "on" position.
4. Indicator light will glow when blades are engaged.
5. Once mower has reached operating speed set height to required position.
6. To disengage the mower, reverse the above procedure.

**MOWING: As mowing conditions vary greatly, it is important that you take special note of this section.**

Your mowing attachment has been designed to cope with a large range of grass Types, conditions, lengths and mowing speeds. Always use high engine revs when mowing and regulate your speed with one of the five forward gears (manual) or adjust your speed with the foot pedal (hydrostatic). As a rule, if you have rough ground, long grass, tough grasses (eg rye grass, kikuyu etc...) or if your grass is wet, it is best to reduce speed. Select a reasonably high cutting height – and if necessary take two cuts, the first one high and the next one lower. Your Kingcat dealer is qualified to advise you on how you should be operating your machine – if in doubt ASK.

**Note:** Remember to always depress the clutch fully when changing gears.

# SPECIFICATIONS

## LYNX REAR DISCHARGE CATCHER & LEOPARD SIDE DISCHARGE

<b>ENGINE:</b>	Briggs & Stratton "Diamond"	Briggs & Stratton "Vanguard"
Horsepower	13HP	16HP, 18HP & 20HP
Cylinders	1	2
Cycle	4	4
Cooling	Air	Air

### MAXIMUM SPEED

Lynx Series I	14 KPH
Lynx Series II	9 KPH
Leopard Hydrogear	10 KPH
Leopard Manual	14 KPH

### TYRES:

Front	15 x 600 x 6
Rear	18 x 950 x 8
	20 x 10 x 8
	22 x 11 x 8

### PRESSURES

18psi
18psi
14psi
10psi

### FUEL & LUBRICATION:

Fuel	Unleaded	Unleaded
Fuel Tank Capacity	7 Litres	7 Litres
Engine Oil	SAE 30	SAE 30
Engine Oil Capacity	1.4 Litres	1.7 Litres – Spin-on filter

### ELECTRICAL SYSTEM:

Battery	1 x 12 Volt
Switch	Key with starter interlock
Ignition	Solid state
Lights	Twin headlights

### TRANSMISSION:

	Peerless 700 Series – Lynx
	Peerless 800 Series – Leopard
	Peerless MST Series – Leopard
Gears	5 Forward, 1 Reverse
Hydrostatic	Peerless VST & Hydrogear
Differential	Peerless HD 100 x 1" axle – Lynx

### CHASSIS:

Full Chassis – Angle iron & box section

### CONTROLS:

Height Adjuster	Right hand side	
Blade Engage	Right dashboard	
Gear Lever	Right hand side – Lynx	Left hand side – Leopard
Brake Pedal	Right foot – Lynx I & Leopard	(manual model Leopard)
Clutch Pedal	Left foot – Lynx I & Leopard	(manual model Leopard)
Break/ Clutch Pedal	Right foot - Lynx series II	
Park Brake	Right hand side	
Control Pedal	Right foot – leopard Hydrostatic	

**TURNING CIRCLE:** 470mm Radius

<b>MOWER DECK:</b>	1040mm Twin – Lynx	Counter rotating blade
	900mm Twin – Leopard	Side discharge
	1100mm Twin – Leopard	Side Discharge

### GRASS CATCHER:

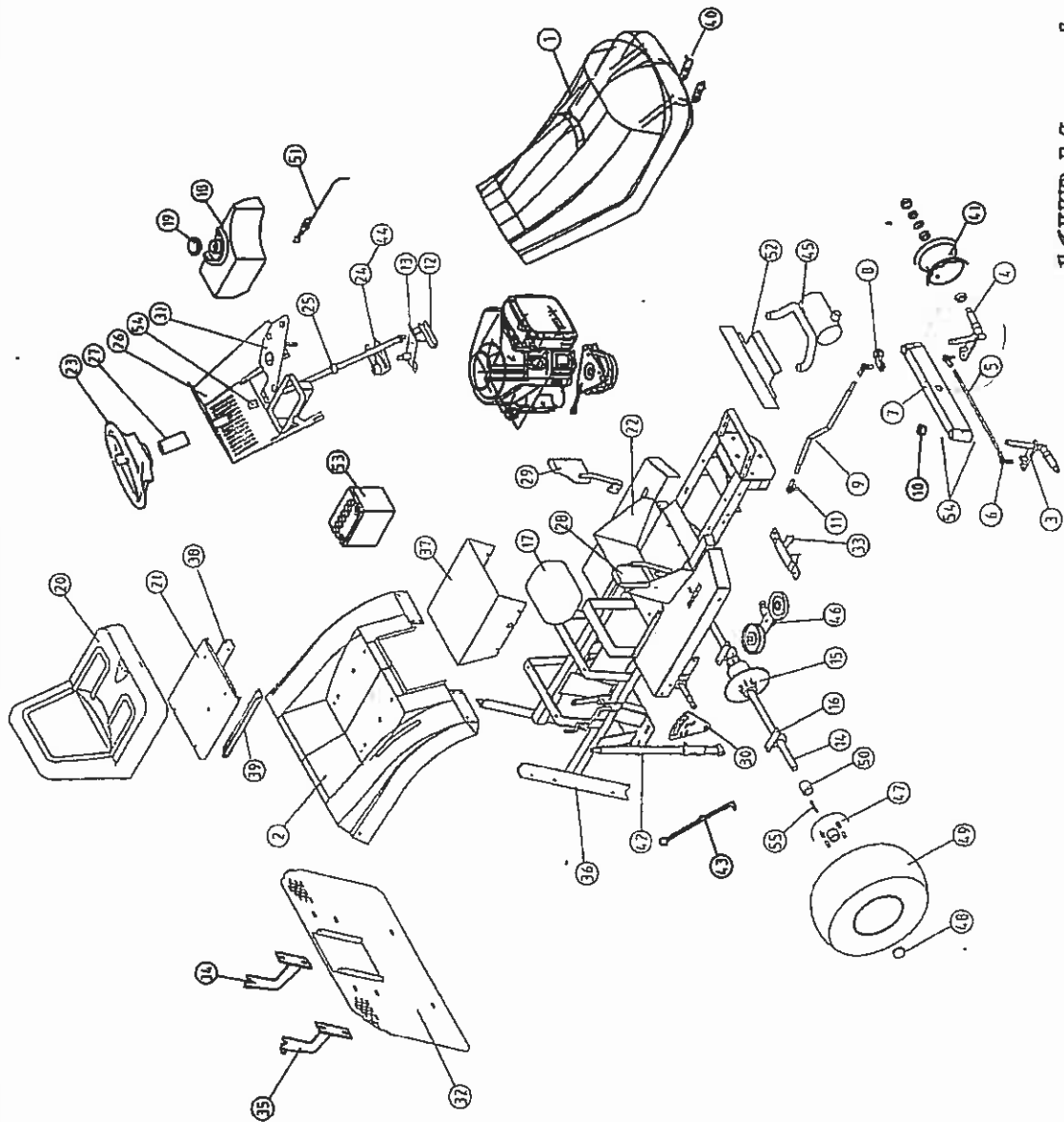
Capacity 177 Litres – Lynx

E & O. E.

# KINGCAT LYNX SERIES I & II LEOPARD SERIES II



16HP Manual - Lynx





LYNX & LEOPARD PARTS LIST

1	502251	Bonnet - Sub Assy Complete - High Console	502161	Console - Steering - High - Leopard
	500430	Bonnet - Bare - Leopard Low Console	500424	Console - Steering - Low - Leopard
	502223	Decal Bonnet LH	502181	Shroud - Console - Lynx
	502224	Decal Bonnet Front	502277	Brake Pedal - Sub Assy
	502272	Decal Bonnet RH	502278	Clutch Pedal - Sub Assy
	500432	Lens LH - High Console	502098	Quadrant - Lift
	500431	Lens RH - High Console	502056	Bracket - Tank Assy
	500432L	Lens LH - Low Console	502148	Panel - Rear - Lynx
	500431L	Lens RH - Low Console	502188	Guide - Belt - Lynx
	500145	Bulb Head Light	500376	Guide - Belt - Leopard - Manual
	500460	Grill - Bonnet Vent	500583	Guide - Belt - Leopard - Hydro
	500435	Hinge - Bonnet Series II	502184	LH Pivot Assy - Catcher Mount - Lynx
	502252	Rear Guard - Sub Assy Complete - Lynx	502185	RH Pivot Assy - Catcher Mount - Lynx
2	500210G	Rear Guard - Sub Assy Complete - Leopard Gear (add Decal - Lever - Gear Pt No 500561)	502002	Chassis - Lynx
	500210H	Rear Guard - Sub Assy Complete - Leopard Hydro (add Decal - Lever - Hydro Pt No 500560)	500376	Chassis - Leopard - Manual
3	502331 - Fig 1	Stub Axle - RH (Long)	500583	Chassis - Leopard - Hydro
4	502330 - Fig 1	Stub Axle - LH (Long)	502282	Transmission Cover - Lynx
5	751631 - Fig 1	Tie Rod	500170	LH Mounting - Seat
6	750347 - Fig 1	Rod End - 10mm	500171	RH Mounting - Seat
7	500045 - Fig 1	Bear Assy - Axle	500048	Plate - Assy Bonnet Mounting
8	500094 - Fig 1	Arm Assy - Steering	500322	Wheel Assy - 15 x 600 x 6 25mm
9	502096 - Fig 2	Link - Drag - Lynx	750294	Rim 6"
10	500301 - Fig 2	Link - Drag - Leopard	750295	Tyre 15 x 600 x 6
11	500266 - Fig 1	Collar - Shaft 3/4"	750298	Tube 15 x 600 x 6
12	500457 - Fig 3	Rod End - 12mm	500502 - Fig 8	Lever - Lift MK II
13	500297 - Fig 3	Steering Box Assy (Leopard II & Lynx Series II)	500161 - Fig 8	Plunger Assy - Lift Lever
14	502076	Quadrant - Steering	500528 - Fig 8	Pin - Index MK2 Lift Lever
15	758103	Differential - 100-121 - Refer Supplier	500197 - Fig 8	Grip - Lift Lever
16	502414	Sprocket 60T - Lynx	500181 - Fig 8	Spacer - Lift Lever
17	502090	Bearing - Rear Axle - Lynx	502322 - Fig 8	Spring
18	502089	Housing - Bearing - Lynx	502242	Lever - Handbrake Assy
	Refer Supplier	Gearbox - Refer Supplier - All Models	502248	Electric Clutch - Sub Assy
	502204 - Fig 5	Tank - Fuel	500253	Muffler
	751917	Tank - Fuel - Under Seat - Leopard	502394 - Fig 9	Clutch Arm
	500374 - Fig 5	Brass Fitting 202 x 4 x 2	500304 - Fig 9	Idler Pulley F2000-0625
	750460 - Fig 5	Solvent Tube 6.4mm	850117 - Fig 9	Idler Pulley V4480-4814
	493988 - Fig 5	Cap - Fuel Tank - Suit Tank 502204 & Tank 751917	500058 - Fig 9	Belt Guide
19	750768	Seat - High Back	752099 - Fig 9	Spacer - Clutch Pulley CH2
20	500169	Plate - Seat - Lynx	502395 - Fig 9	Washer - Clutch Arm
21	500169	Plate - Seat - Leopard	502104	Wheel Hub - Lynx
22	502264	Lynx Pedestal - Sub Assy	752078	Wheel Hub - Leopard
23	502079	Steering Wheel - Lynx	750499	Hub Cap
24	750766	Steering Wheel - Leopard	500308	Wheel Assy - 20 x 10 x 8 - 4 Stud - Lynx & Leopard Manual
25	502145	Shaft - Steering - Lynx	500138	Rim 8" - 4 Stud
26	500423	Shaft - Steering - Leopard	500608	Tyre 20 x 10 x 8
	500266	Collar - Shaft 3/4"	500359	Wheel Assy 18-950 x 8 - 4 Stud - Leopard Hydro
	502161	Console - Steering - Lynx	750300	Tyre 18-950 x 8
			502111	Tube 18-950 x 8
			500451	Hub Spacer - Lynx
			500553	Hub Spacer - Leopard - Manual
				Hub Spacer - Leopard - Hydro

Heavy washer  
between  
pulley  
clutch

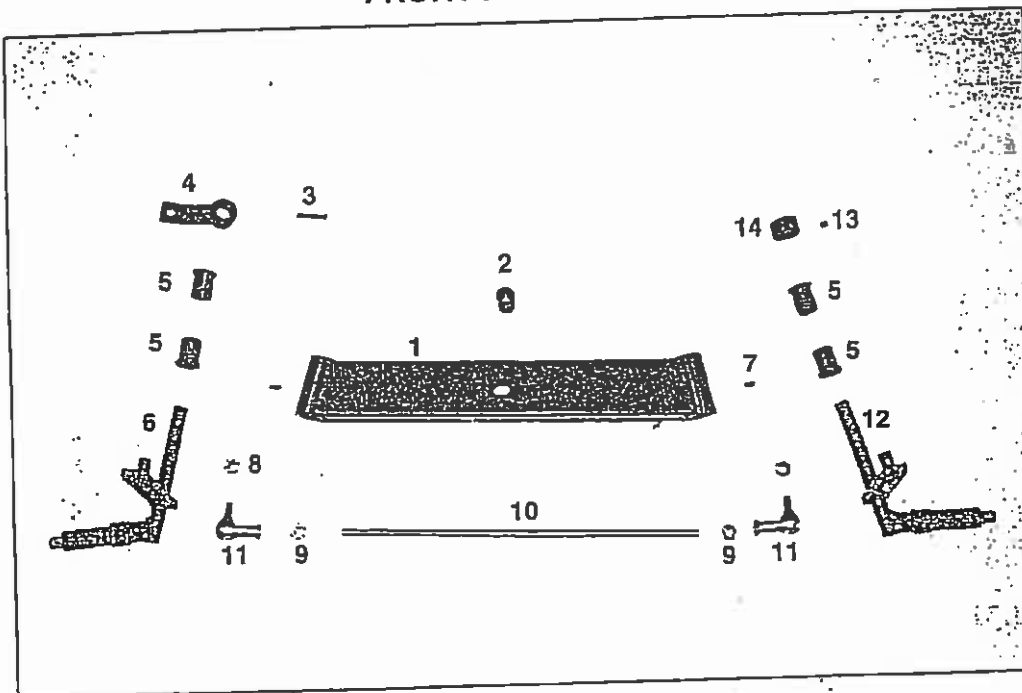


LYNX & LEOPARD PARTS LIST CONTINUED

HARDWARE			
750772	Screw - Slot 1/8" x 3/4" MT zp (Micro Switch)		2
750111	Screw - Set Hex M6 x 12 zp		2
750112	Screw - Set M6 x 16 zp		7
750113	Screw - Set Hex M6 x 20 zp		2
502124	Screw - Bulton Head M8 x 16 zp (G- Box Cover and Guard)		6
750181	Screw - Set Hex M8 x 16 zp		4
750116	Screw - Set M8 x 20 M/S zp		16
750139	Screw - Set M10 x 35 M/S zp		2
502070	Screw - Set Hex M10 x 16 M/S zp		6
750186	Screw - Set Hex M12 x 20 M/S zp (Chain Adjuster)		2
758013	Screw - Set 5/16" x 1" UNC HT zp (Gear Box Mount)		4
750121	Bolt - Hex M8 x 40 HT zp (Engine Mount)		4
500244	Bolt - M16 x 75 M/S zp (Axle Pivot)		1
750771	Nut - Hex 1/8" MT zp (Micro Switch)		2
750109	Nut - Hex 1/4" NC zp (Brake Conlink)		2
750133	Nut - Nyloc 1/4" UNC zp (Brake Conlink)		1
750101	Nut - Nyloc M6 zp		7
750188	Nut - Hex M6 HT zp		4
750129	Nut - Hex M8 zp		2
750102	Nut - Nyloc M8 zp		39
750393	Nut - Wheel 7/16" NF		8
750105	Nut - Hex M10 Mach zp		5
750127	Nut - Nyloc M10 zp		10
750128	Nut - Nyloc M16 zp (Steering Box & Stub Axles)		3
758153	Nut - Nyloc M16 x 1.5 zp (Lift Lever)		1
750160	Washer - Flat 1/4" x 5/8" zp		1
850121	Washer - Flat 5/8" x 1 3/8" zp (S-Box & StubAxles)		2
750156	Washer - Flat M8 x 21 zp		34
750157	Washer - Spring M8 zp		2
750153	Washer - Flat M10 x 21 zp		9
750154	Washer - Flat 1/2" x 1" zp		2
758164	Washer - Starloc 3/8" Plain (Gear Lever Link)		2
750203	Washer - Starloc 1/4" zp (Break Con Link)		2
750199	Washer - Starloc 5/16" Plain Int		1
754116	Circlip - 25mm Ext (Rear Axle)		2
750197	Switch - Gear Box Neutral		1
750200	Pin - Steering Wheel		1
750134	Nut - Nyloc 5/16"unc (Seat Mounting)		9
850505	Socket - Cap M6 x 16 Black (Steering Column)		1
750609	Washer - Engine		1

FIG 1

FRONT AXLE ASSY

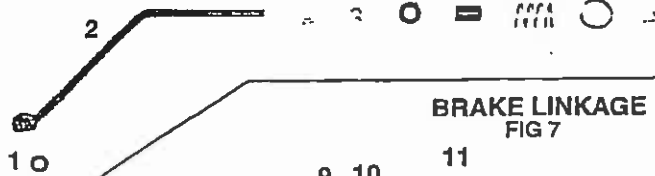


FRONT AXLE ASSEMBLY

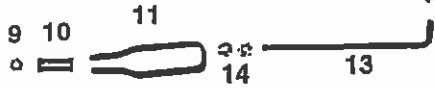
- |     |        |                |
|-----|--------|----------------|
| 1.  | 500045 | BEAM AXLE      |
| 2.  | 500142 | BUSH           |
| 3.  | 750249 | PIN TENSION    |
| 4.  | 500094 | ARM STEERING   |
| 5.  | 500321 | BUSH           |
| 6.  | 502330 | STUB AXLE L.H. |
| 7.  | 750219 | NIPPLE GREASE  |
| 8.  | 750394 | NUT NYLOC      |
| 9.  | 750189 | NUT            |
| 10. | 751631 | TIE ROD        |
| 11. | 750347 | ROD END        |
| 12. | 502331 | STUB AXLE R.H. |
| 13. | 750103 | SCREW GUB      |
| 14. | 500266 | COLLAR         |

20/03/00

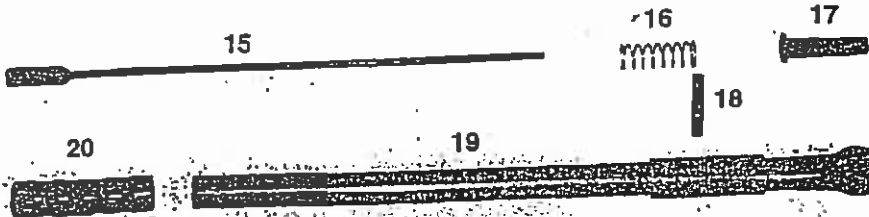
CLUTCH LINKAGE FIG 6 3 3 4 5 6 7 8



BRAKE LINKAGE FIG 7



LIFT LEVER ASSY FIG 8



- 1. 750199 WASHER LOCK
- 2. 502135 LINK CLUTCH LYNX
- 3. 750129 NUT
- 4. 500489 WASHER BALL
- 5. 500488 SLEEVE
- 6. 502411 SPRING
- 7. 500501 WASHER CUP
- 8. 750102 NUT NYLOC

BRAKE LINKAGE

- 9. 750133 NUT NYLOC
- 10. 750389 SPRING
- 11. 750512 CLEVIS
- 12. 750203 WASHER-LOCK
- 13. 502067 LINK LYNX
- 14. 500056 ROD BRAKE LEOPARD
- 15. 750109 NUT

LIFT LEVER ASSEMBLY

- 15. 500181M PLUNGER MODIFIED
- 16. 502322 SPRING
- 17. 500181 SPACER
- 18. 500528 PIN-INDEX MODIFIED
- 19. 500502 LEVER-LIFT
- 20. 500187 GRIP

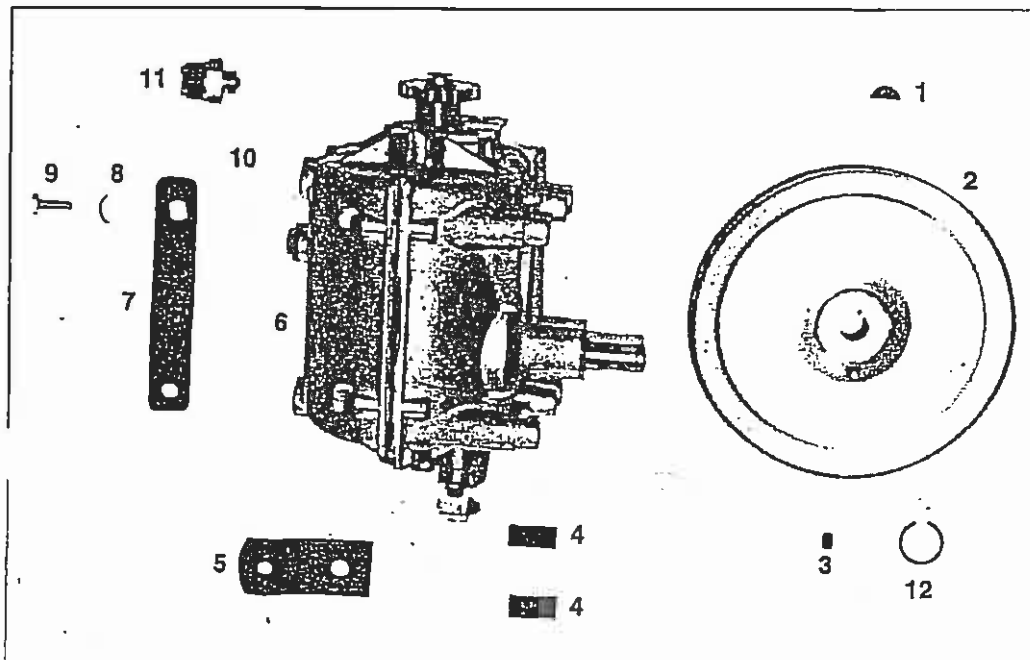
CLUTCH ARM ASSEMBLY

- 1. 502189 V BELT LYNX UP TO SERIAL 597030
- 502333 V BELT LYNX FROM SERIAL 597031
- 500183 V BELT LEOPARD MANUAL
- 500454 V BELT LEOPARD HYDRO
- 2. 750135 NUT NYLOC
- 3. 750387 SPRING LYNX
- 750385 SPRING LEOPARD HYDRO
- 750387 SPRING LEOPARD MANUAL
- 4. 752099 SPACER
- 5. 850117 PULLEY
- 6. 750153 WASHER
- 7. 500495 BOLT
- 8. 500304 PULLEY
- 9. 502394M ARM CLUTCH LYNX
- 500089 ARM CLUTCH LEOPARD
- 10. 750179M BOLT LYNX
- 750736 BOLT LEOPARD
- 11. 500058 GUIDE BELT
- 12. 502396M SHAFT
- 13. 502395M WASHER LYNX
- 500490 WASHER LEOPARD
- 14. 750127M NUT NYLOC
- 502398 UPGRADE KIT - Includes all numbers with suffix M

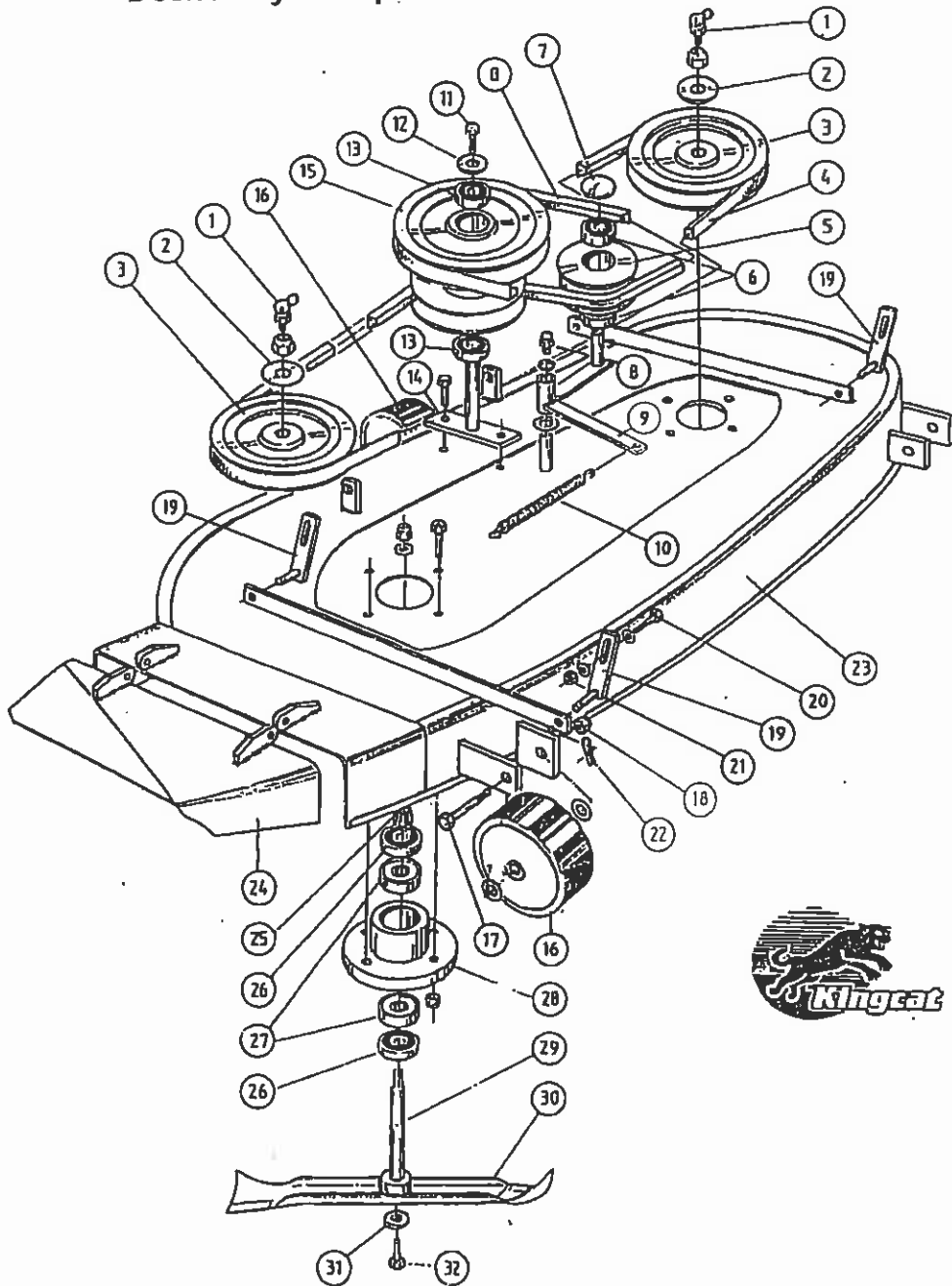
ILLUSTRATION DEPICTS LYNX ASSEMBLY

GEAR BOX ASSEMBLY

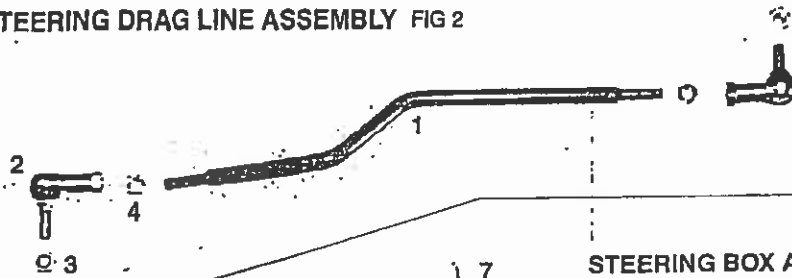
- 1. 750405 KEY WOODRUFF
- 2. 850087 PULLEY INPUT 185mm LYNX UP TO SERIAL NO. 0597031
- 502329 PULLEY INPUT 150mm LYNX FROM SERIAL NO. 0597031
- 500217 PULLEY TRANSAXLE LEOPARD
- 3. 750103 SCREW GRUB
- 4. 502341 BRAKE PAD HEAVY DUTY
- 5. 502279 BRAKE LEVER SHORT LYNX
- 6. GEAR BOX REFER SUPPLIER
- 7. 500054B ARM SELECTOR LYNX
- 500054 ARM SELECTOR LEOPARD MANUAL
- 8. 750092 WASHER
- 9. 750177 SET SCREW
- 10. 750413 WASHER HARDENED
- 11. 750197 SWITCH NEUTRAL
- 12. 570207 CIRCLIP



Deck Assy - Leopard-Model 900 & 1100

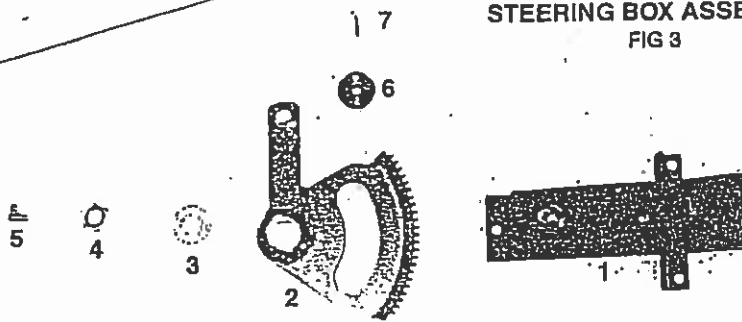


**STEERING DRAG LINE ASSEMBLY FIG 2**



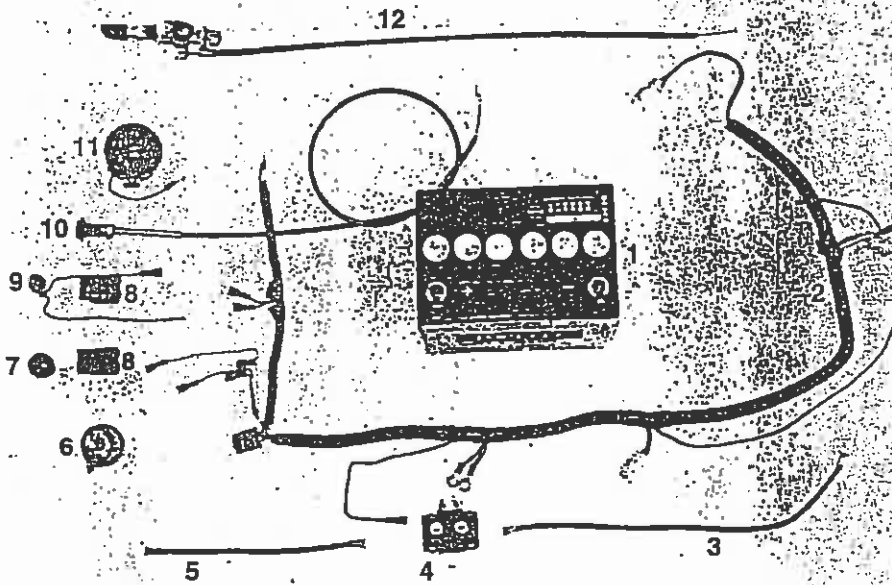
- 1. 502098 LINK DRAG LYNX
- 2. 500300 ROD END
- 3. 750104 NUT NYLOC
- 4. 750130 NUT HEX

**STEERING BOX ASSEMBLY FIG 3**



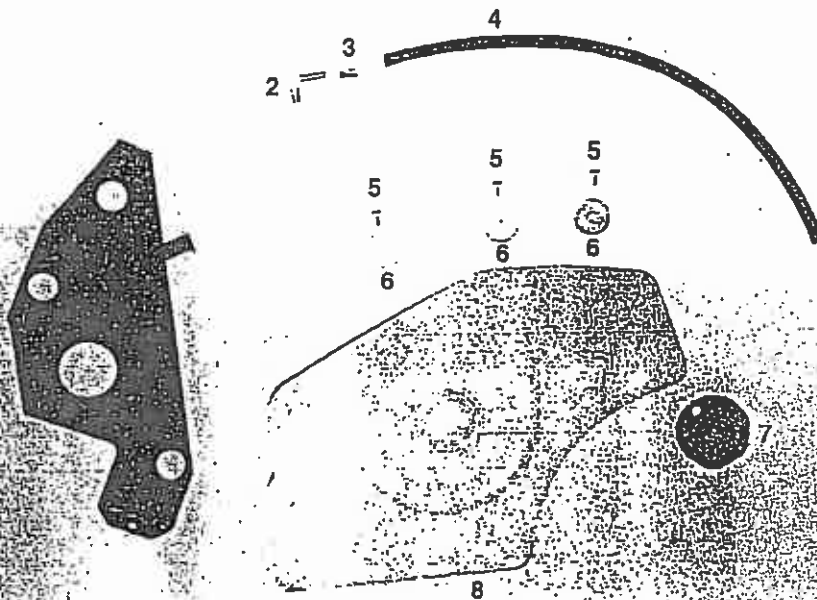
- STEERING BOX ASSEMBLY**
- 1. 500457 STEERING BOX LYNX II & LEOPARD
  - 2. 500297 QUADRANT STEERING NEW
  - 3. 850121 WASHER
  - 4. 750128 NUT WASHER
  - 5. 750216 NIPPLE GREASE
  - 6. 500122 WASHER STEERING BOX
  - 7. 750116 SET SCREW

**CONSOLE PARTS**



- 1. AM109 BATTERY
- 2. 500059C LOOM LYNX & LEOPARD
- 3. 500065 LEAD POSITIVE LONG
- 4. AM159 SOLENOID
- 5. 500064 LEAD POSITIVE SHORT
- 6. 750280 SWITCH IGNITION
- 7. 500148 LAMP WARNING
- 8. 500148 SWITCH
- 9. 500061A WIRE FUSE
- 10. 750408 CABLE CHOKE (NOT 13hp)
- 11. 500144 GAUGE AMMETER
- 12. 500216 CONTROL ASSY THROTT

**FUEL TANK ASSEMBLY**



- 1. 502058 BRACKET TANK 16HP
- 2. 502060 BRACKET TANK 13HP
- 3. 500374 FITTING BRASS 90°
- 4. 750331 CLIP HOSE
- 5. 750480 HOSE FUEL
- 6. 502270 HOSE FUEL 13HP
- 7. 502082 SCREW
- 8. 750145 WASHER
- 9. 493988 CAP FUEL
- 10. 502204 TANK

PARTS LIST - DECK ASSY - MODEL 900 & 1100

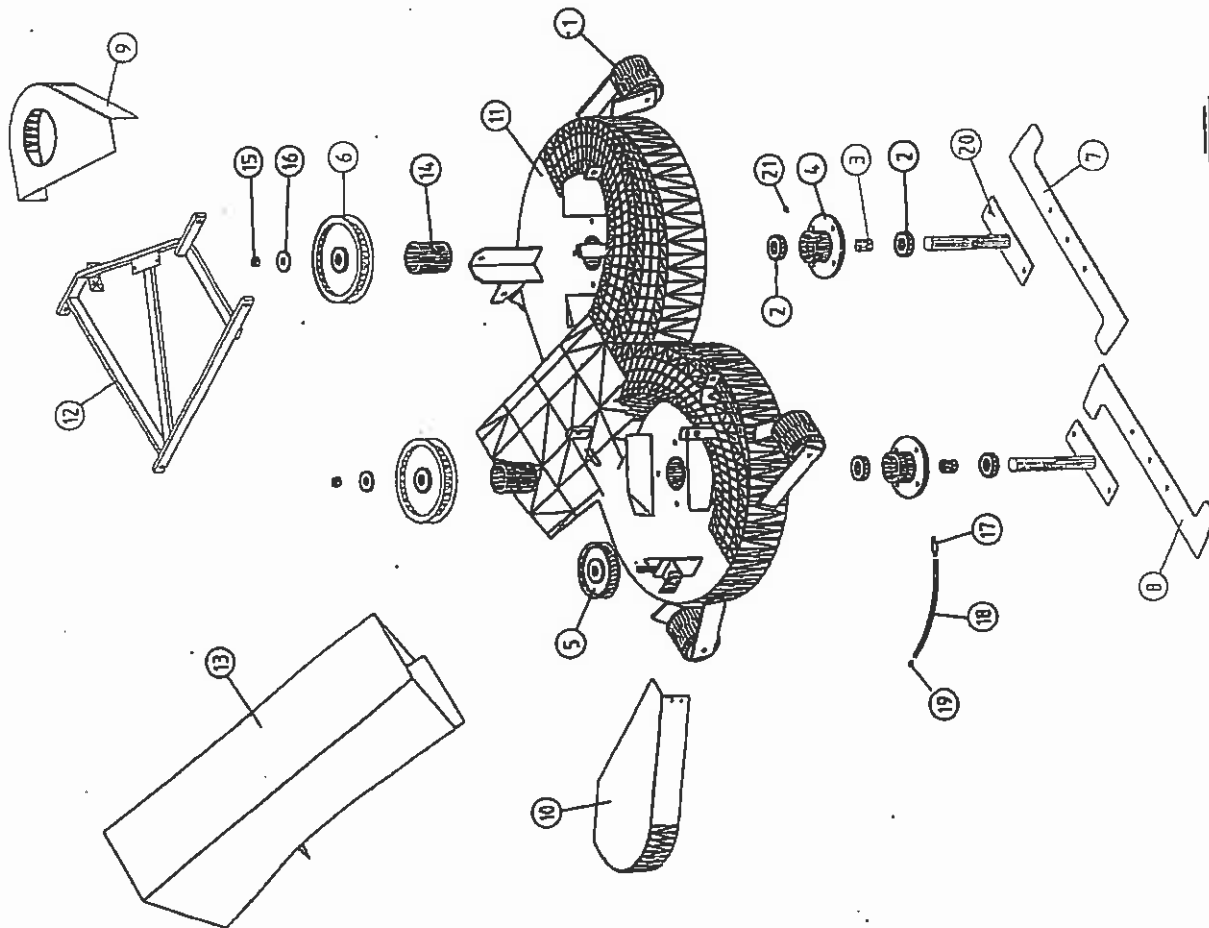
1	750216	Nipple - Grease	
2	500176	Washer - Spindle	
3	850137	Pulley - Spindle	
4	750401	V Belt - Model 900	
	500327	V Belt - Model 1100	
5	500303	Jockey - Pulley - NLA use PIFBB02 & 500609	
	PIFBB02	Jockey - Pulley	
	500609	Adapter - Pulley Bush	
6	750242	Bearing - Idler Pulley - Early Models	
7	750382	Plug - Expansion - Early Models	
8	500375	V Belt - P.T.O. Belt - 3 Roller Deck	
	500494	V Belt - P.T.O. Belt - 4 Roller Deck	
9	500095	Arm - Tension	
10	750385	Spring - Tension Arm - Model 900 - Qty 1	
	750385	Spring - Tension Arm - Model 1100 - Qty 2	
11	750266	Screw - Set M10 x 30 HT	
12	750609	Washer	
13	750337	Bearing - Ball	
14	500191	Shaft Assy - Double Idler	
15	500115	Pulley Assy - Double Idler	
16	005478	End Cap - 70mm - 3 Roller Deck	
	500260	Tube - Roller - 70mm - 3 Roller Deck	
	500261	Axle - Roller - 70mm - 3 Roller Deck	
	502146	End Cap - 90mm - 4 Roller Deck	
	502095	Tube - Roller - 90mm - 4 Roller Deck	
	502164	Axle - Roller - 90mm - 4 Roller Deck	
17	500257	Bolt - M10 x 110 - 3 Roller Deck	
	502143	Bolt - M10 x 120 - 4 Roller Deck	
18	750127	Nut - Nyloc M10	
19	500127	Lug Assy - Pan Lift	
20	750139	Screw - Set M10 x 35	
21	750127	Nut - Nyloc - M10	
22	750324	Clip - "R"	
23	500610	Deck - Model 900 - 4 Roller Deck	
	500218	Deck - Model 900 - 3 Roller Deck	NLA
	500611	Deck - Model 1100 - 4 Roller Deck	
	500284	Deck - Model 1100 - 3 Roller deck	NLA
24	500233	Flap Assy - Model 900	
	500289	Flap Assy - Model 1100	
25	500111	Bush - Taper	
26	750282	Seal - Spindle	
27	750338	Bearing	
28	500099	Housing - Spindle	
29	500323	Spindle Assy	
30	911181	Blade 18" - Model 900	
	912144	Blade 21" - Model 1100	
	500325	Blade - Heavy Duty - Model 900	
	500326	Blade - Heavy Duty - Model 1100	
31	500106	Washer - Blade	
32	500324	Blade - Bolt	
	750303	Decal - Caution	2
	750128	Nut - Nyloc M16 - Spindle Assy - Early Model	2
	758153	Nut - Nyloc - Spindle Assy - Late Model	2
	751211	Washer Tapered - Early model	1
	750241	Bush - Tension Arm	2
	750207	Circlip - Tension Arm	1
	500175	Spacer - Spindle	2
	850086	Spacer - Blade - Spindle Bearings	2
	500241	Spacer - Double Idler	1
	751076	Spacer - Jockey Pulley - Early	1
	500315	Mulch Plate - Model 900	1
	500295	Mulch Plate - Model 1100	1
	500151	ARM ADJUSTOR	1
	500496	(4 ROLLER DECK)	ARM ASSY STABILIZER
	500136	(3 ROLLER DECK)	" " "

- TURN UP -  
 FLAT NO TURN UP ON END

750130 (NUT 12MM HEX)

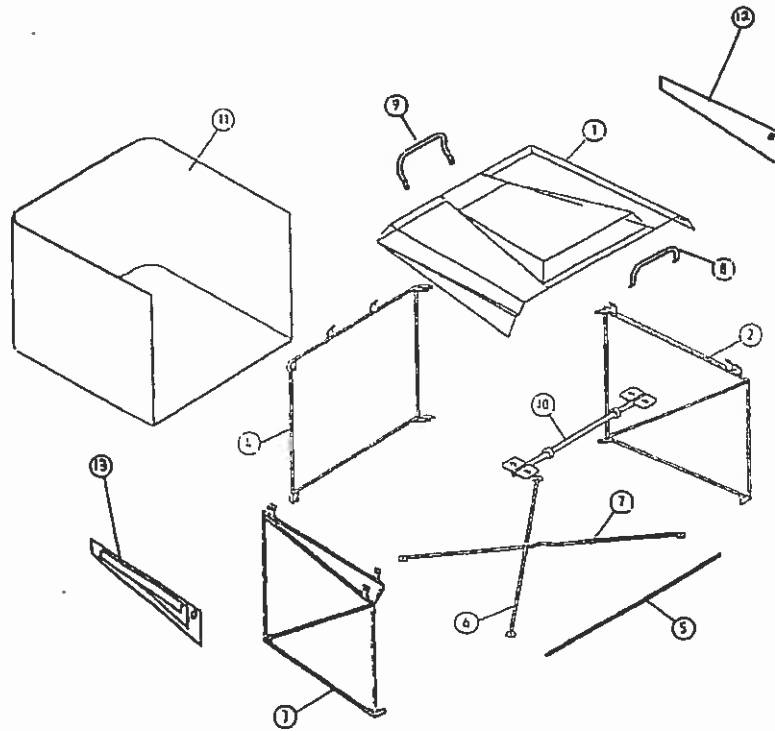
LYNX PARTS LIST - DECK ASSY - RD1040

1	502285	90mm Roller Sub Assy	4
2	750338	Bearing 6205	4
3	750282	Seal 35-52-7	4
4	758116	Spacer - Bearing	2
5	754148	Housing - Spindle	2
6	502288	Idle Pulley Sub Assy	1
7	850509	Pulley - Spindle 660	2
8	502086	LH Blade - Lynx	1
9	502085	RH Blade - Lynx	1
10	502201	LH Belt Cover	1
11	502202	RH Belt Cover	1
12	502236	Cutter Deck	1
13	502154	Stabilizer	1
14	502109	Chute Assy	1
15	758153	Spacer - Spindle	2
16	500176	Nut - Nylon M16 x 1.5 zp	2
17	750217	Washer - Spindle Pulley	2
18	502188	Connector - Male 68 x 1/4" x 1/8"	2
19	502240	Tube - Grease 145mm	1
20	502163	Nipple - Grease 1/8" x 45 BSP	1
21	750219	Spindle Assy	2
		Nipple - Grease M6 x 1 Straight	1
<b>PARTS NOT ILLUSTRATED</b>			
	750324	Clip - Grip AG5 (2mm)	4
	750320	Links - Lift Chain RC40-11	2
	750383	Spring - Pan Return	2
	500111	Bush - Taper	2
	502091	Adjuster - Pan.	2
	500127	Lug Assy - Pan Lift	2
	502241	Hanger - Deck Front	2
	502312	Deflector - Sub Assy	1
<b>HARDWARE</b>			
	502108	Washer - Loc 5/8" External ZP (Pan Adjuster)	4
	750209	Nut - Hex M16 zp (Pan Adjuster Bolt)	4
	750119	Screw - Set M8 x 30 M/S zp (Spindle Housing)	8
	502066	Screw - Csk A/Head M10 x 16 BL UNC (idl ply)	1
	750286	Screw - Set M10 x 30 HT zp (Blade Bolts)	6
	502125	Screw - Set M12 x 30 M/S zp (Con Arm Assy)	1
	502072	Screw - Set M12 x 35 M/S zp (Con Arm Assy)	3
	502143	Bolt - M10 x 120 M/S zp (Roller)	4
	750160	Washer - Flat 1/2" x 5/8" zp (Belt Cover)	10
	750145	Washer - Fender 1/2" x 1 1/2" zp (Chute Pivot)	2
	750153	Washer - Flat M10 x 21 zp (Roller)	8
	750101	Nut - Nylon M6 zp (Belt Covers & Chute)	10
	750102	Nut - Nylon M8 zp (Spindle Housings)	10
	750127	Nut - Nylon M10 zp (Rollers & Blades)	8
	750104	Nut - Nylon M12 zp (Connecting Arm Assy)	4
	750112	Screw - Set M6 x 16 zp (Belt Covers & Chute)	10
	750303	Decal - Caution	2
	751149	Washer - Csk (Idler Pulley)	1



Deck Assy - RD1040





**LYNX PARTS LIST - CATCHER KIT ASSY**

1	502253	Top - Catcher Assy	1
2	502254	LH Frame	1
3	502255	RH Frame	1
4	502256	Back Frame	1
5	502208	Front Cross Member	1
6	502258	Straight Brace	1
7	502259	Cross Brace	1
8	502158	Front Handle	1
9	502159	Rear Handle	1
10	502238	Catcher Mount Shaft	1
11	502203	Catcher Bag	1
12	502308	LH Air Deflector	1
13	502309	RH Air Deflector	1
	502230	Decal - Top Catcher Rear	1
	502225	Decal - Catcher LH	1
	502226	Decal - Catcher RH	1
<b><u>HARDWARE</u></b>			
	750111	Screw - Set Hex M6 x 12 zp	2
	750112	Screw - Set M6 x 16 zp	4
	502124	Screw - Button Head M8 x 16 zp	8
	500436	Screw - Button Head M8 x 20 zp	4
	502105	Screw - Button Head M8 x 25 zp	2
	750102	Nut - Nyloc M8 zp	14
	750101	Nut - Nyloc M6 zp	6
	750156	Washer - Flat M8 x 21 zp	10
	750103	Screw - Grub 5/16" x 3/8"	2
	502269	Ties - Cable J355-T30R-W	2

20/03/00

