



Models ZOF 161100
& ZOF 161200

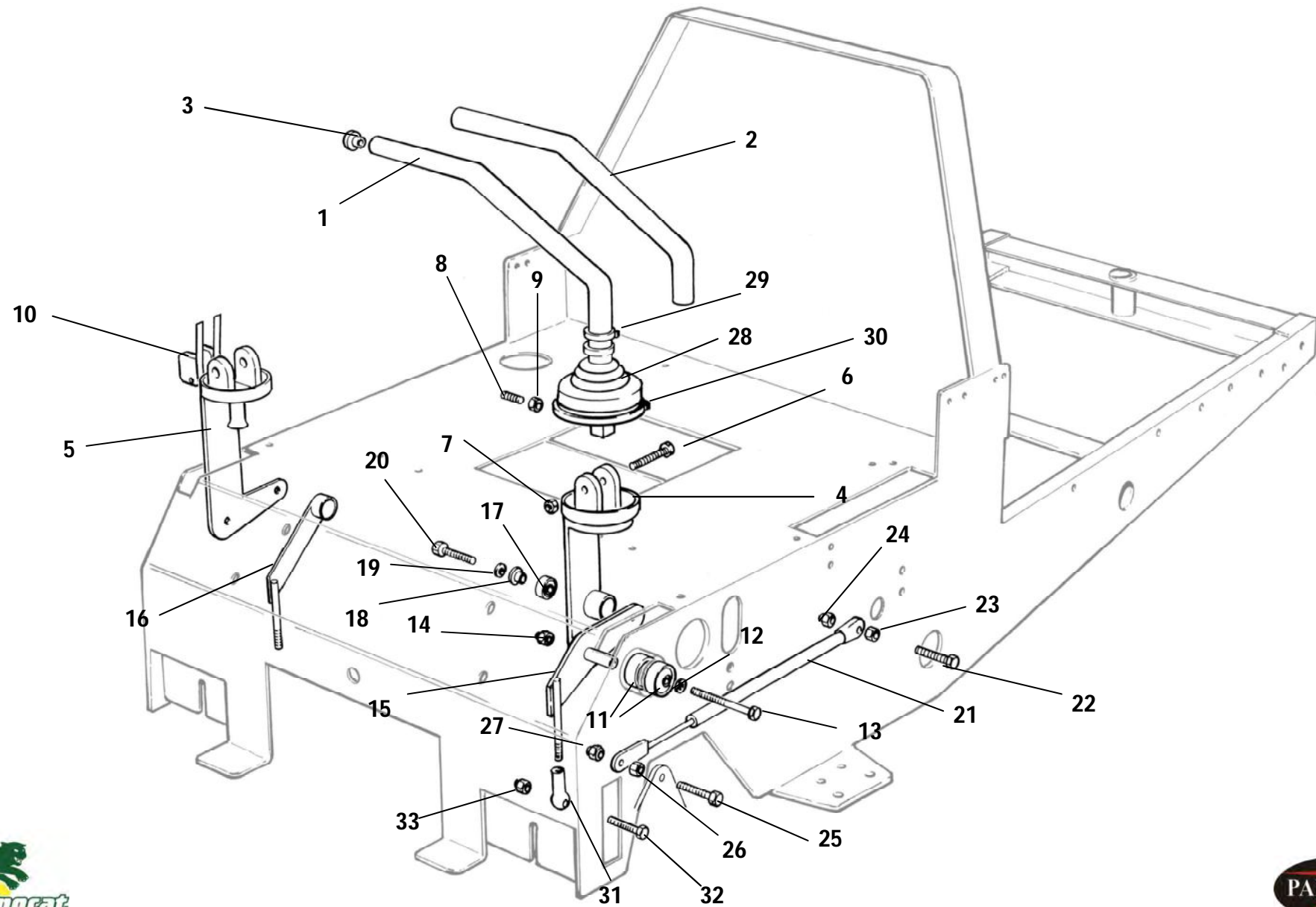


ILLUSTRATED SPARE PARTS CATALOGUE

CONTENTS LIST

	Page No
Drive Lever Installation.....	1
Handbrake Pivot Bracket Assembly.....	3
Chassis & Body Parts 1.....	5
Chassis & Body Parts 2.....	7
Chassis & Body Parts 3.....	9
Rear Wheel Installation.....	11
Deck Assembly.....	13
Spindle and Housing Assembly.....	17
Drive Installation.....	19
Electrical Installation.....	21

DRIVE LEVER INSTALLATION



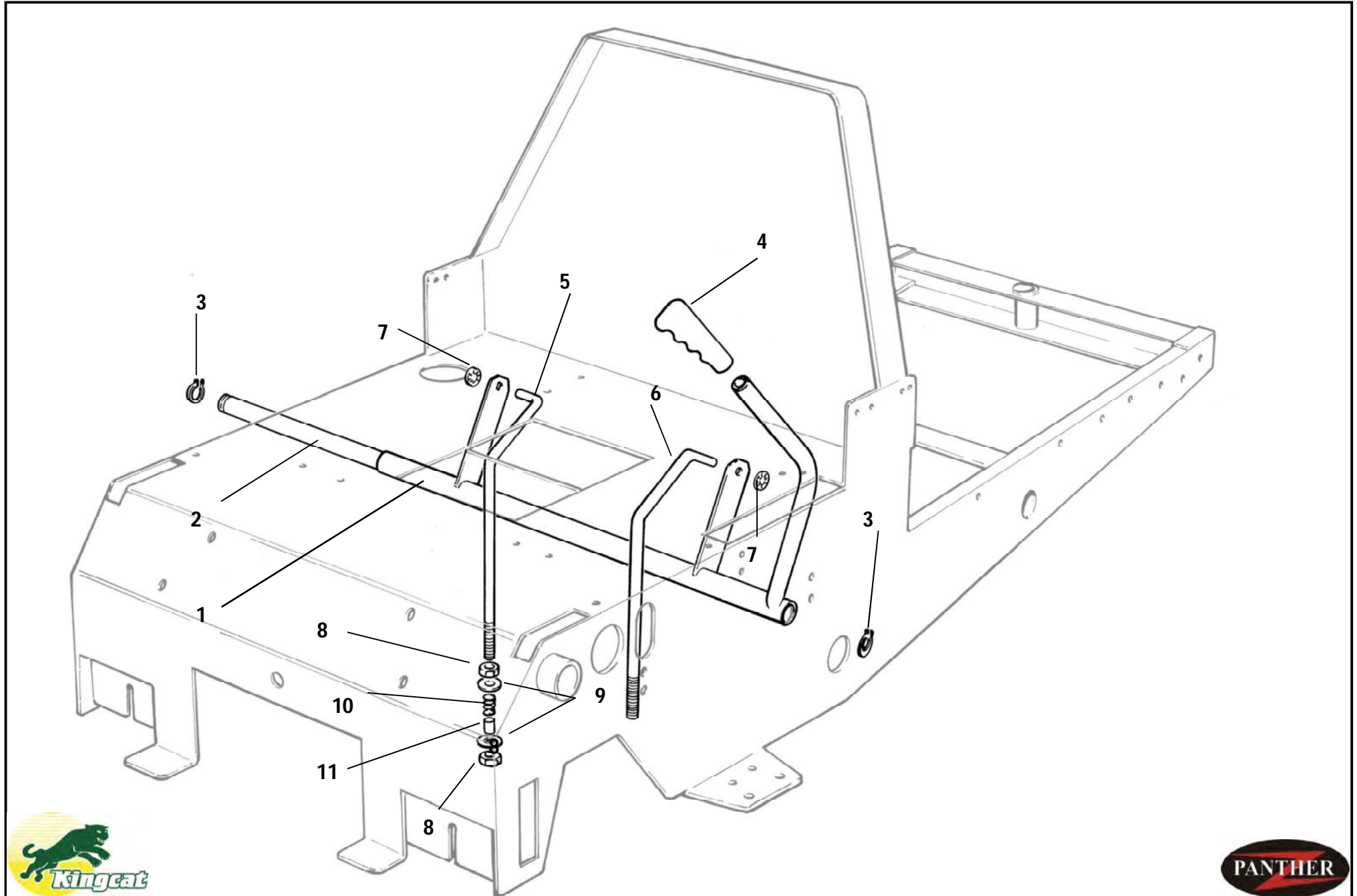


DRIVE LEVER INSTALLATION



Item	Description	Part No	Qty	Item	Description	Part No	Qty
1	CONTROL HANDLE	400235	2	25	BOLT, M8 X 25	750118	2
2	GRIP	ZT1213	2	26	NUT, Hex, M8	750129	2
3	PLUG	ZT1178	2	27	NUT, Nyloc, M8	750102	2
4	LEVER, LH	400225	1	28	BOOT, Drive Lever	400504	2
5	LEVER, RH	400224	1	29	CABLE TIE	502269	2
6	BOLT, M8 x 40	750121	2	30	CABLE TIE, 4.8 X 370	400569	2
7	NUT, Nyloc, M8	750102	2	31	ROD END	AM020	2
8	GRUBSCREW, M8 X 53	400563	1	32	BOLT, 3/8" x 1 1/4" UNF	750161	2
9	NUT, Hex, M8	750129	1	33	NUT, Nyloc, 3/8" UNF	750135	2
10	LIMIT SWITCH	750769	2				
11	BEARING, Roller	750242	4				
12	WASHER, Flat, Ø10 x 21	750153	2				
13	BOLT, M10 x 55	850026	2				
14	NUT, Nyloc, M10	750127	2				
15	LINK, LH	400301	1				
16	LINK, RH	400357	1				
17	SHAFT, Pivot	400285	2				
18	BUSH, CSB-10F 16170	400264	2				
19	WASHER, Flat, Ø8 x 21	750156	2				
20	BOLT, M8 x 30	750119	2				
21	DAMPER	ZTS294	2				
22	BOLT, M8 X 25	750118	2				
23	NUT, Hex, M8	750129	2				
24	NUT, Nyloc, M8	750102	2				

HANDBRAKE PIVOT BRACKET ASSEMBLY



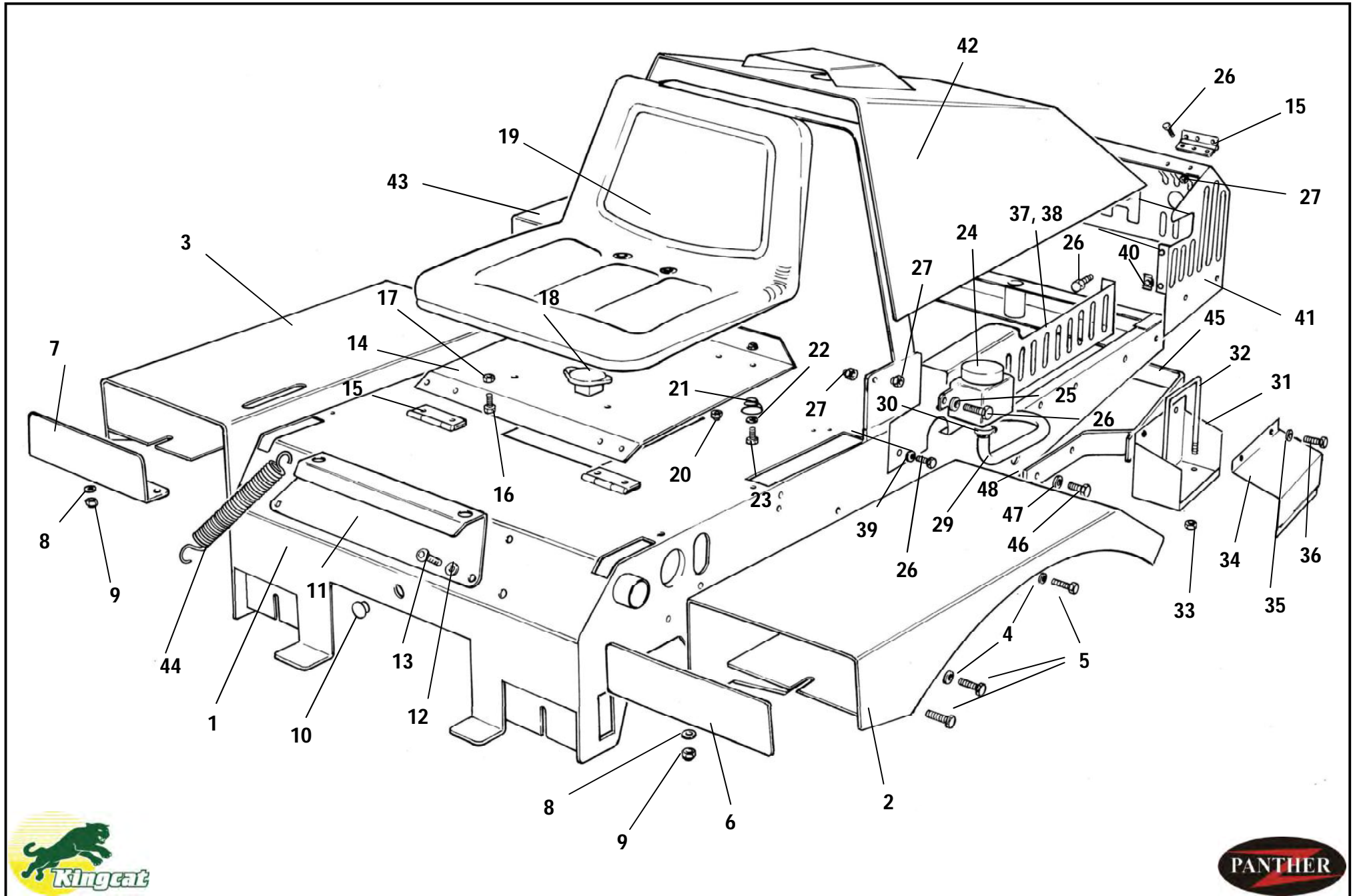


HANDBRAKE PIVOT BRACKET ASSEMBLY



Item	Description	Part No	Qty	Item	Description	Part No	Qty
1	BRACKET ASSEMBLY, Handbrake Pivot	400308	1				
2	SHAFT	400306	1				
3	CIRCLIP	750207	2				
4	GRIP	750310	1				
5	LINK, Park Brake, RH	400313	1				
6	LINK, Park Brake, LH	400553	1				
7	WASHER, Star, Ø 5/16"	750199	2				
8	NUT, Hex M8	750129	4				
9	WASHER, Flat, Ø8 X 21	750156	4				
10	SPRING	400508	2				
11	SPACER	400360	2				
12							
13							
14							
15							
16							
17							
18							
19							
20							
21							
22							
23							
24							

CHASSIS & BODY PARTS (1)

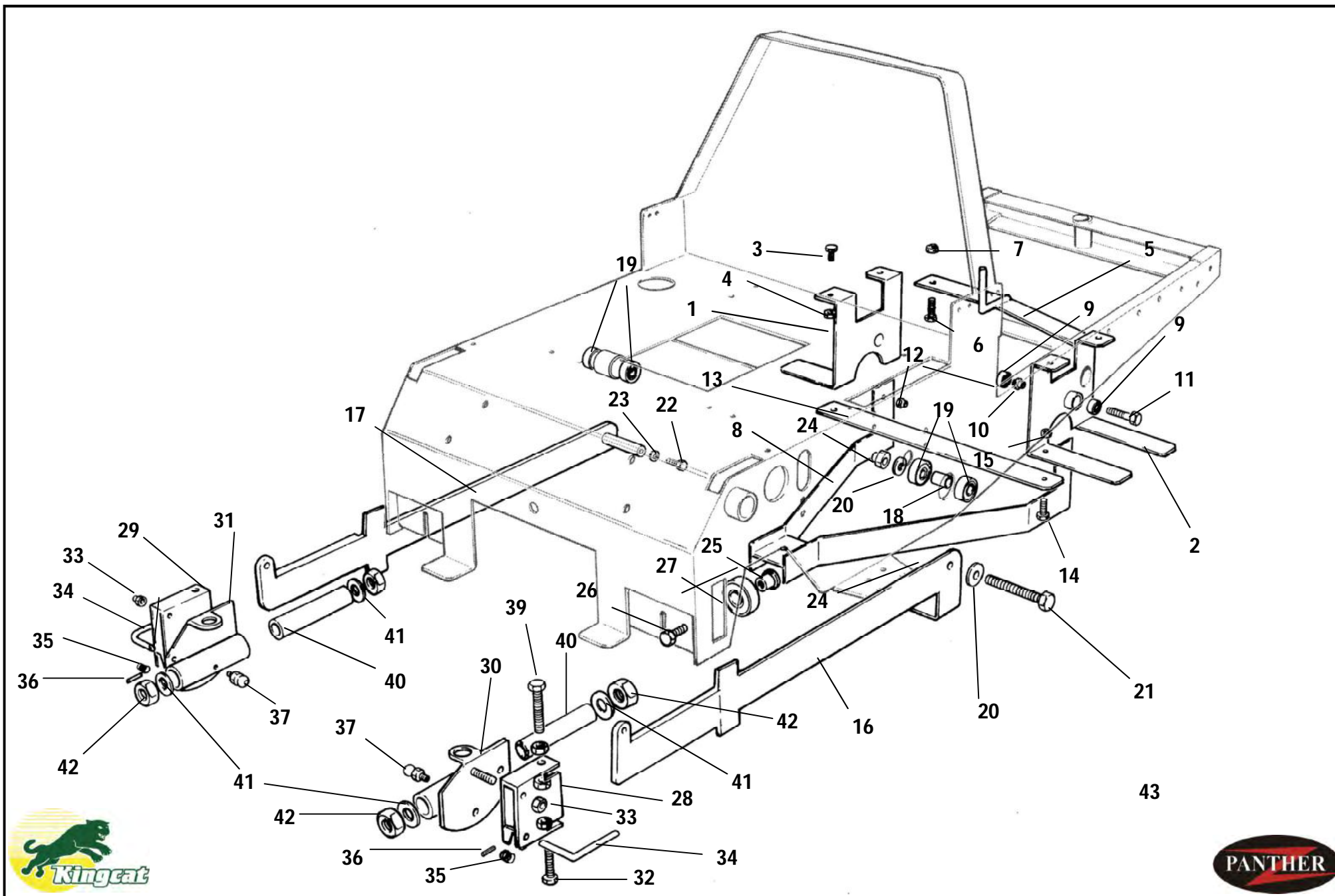




CHASSIS AND BODY PARTS (1)



Item	Description	Part No	Qty	Item	Description	Part No	Qty
1	CHASSIS	400202	1	25	WASHER, Flat, Ø 1/4" X 5/8"	750160	4
2	MUDGUARD, LH	400219	1	26	SETSCREW, M6 X 12	750111	18
3	MUDGUARD, RH	400220	1	27	NUT, Nyloc, M6	750101	12
4	SPRINGWASHER, Ø8	750157	4	28	HOSE ASSEMBLY, LH	400605	1
5	SETSCREW, M8 X 16	750181	6	29	HOSE ASSEMBLY, RH	400604	1
6	BLANK PLATE, LH	400390	1	30	HOSE CLAMP (Not illustrated)	400499	4
7	BLANK PLATE, RH	400391	1	31	CABINET, Battery	400386	1
8	WASHER, Flat, Ø8 X 21	750156	2	32	CLAMP, Battery	400566	1
9	NUT, Nyloc, M8	750102	2	33	NUT, Nyloc, 1/4" UNC	750133	2
10	PLUG	750240	1	34	COVER, Battery Cabinet	400387	1
11	BRACKET	400389	1	35	WASHER, Flat, Ø1/4" X 5/8"	750160	2
12	WASHER, Flat, Ø8 X 21	750156	4	36	SETSCREW, M6 X 16	750112	2
13	SCREW, Button Head, M8 X 16	502124	4	37	SIDE GRILL, LH	400213	1
14	PLATE, Seat Mounting	400383	1	38	SIDE GRILL, RH (not illustrated)	400214	1
15	HINGE	750213	4	39	WASHER, Flat, Ø1/4" X 5/8"	750160	2
16	SETSCREW, M6 X 16	750113	8	40	NUT, Cage	750208	4
17	NUT, Nyloc, M6	750101	8	41	GRILL, Rear	400212	1
18	SWITCH, Safety	SSL	1	42	BONNET	400238	1
19	SEAT ASSEMBLY	750148	1	43	TANK, Fuel	400375	1
20	NUT, Nyloc, M8	750102	4	44	SPRING, Deck Lift	400495	2
21	SPRING	13060	2	45	BUMPER	400509	1
22	WASHER, Flat, Ø8 X 21	750156	2	46	BOLT, M10 X 30	750266	4
23	SETSCREW, M8 X 20	750116	2	47	WASHER, Flat, Ø10 X 21	750158	4
24	RESERVOIR, Transmission Fluid	400498	2	48	NUT, Nyloc, M10	750127	4

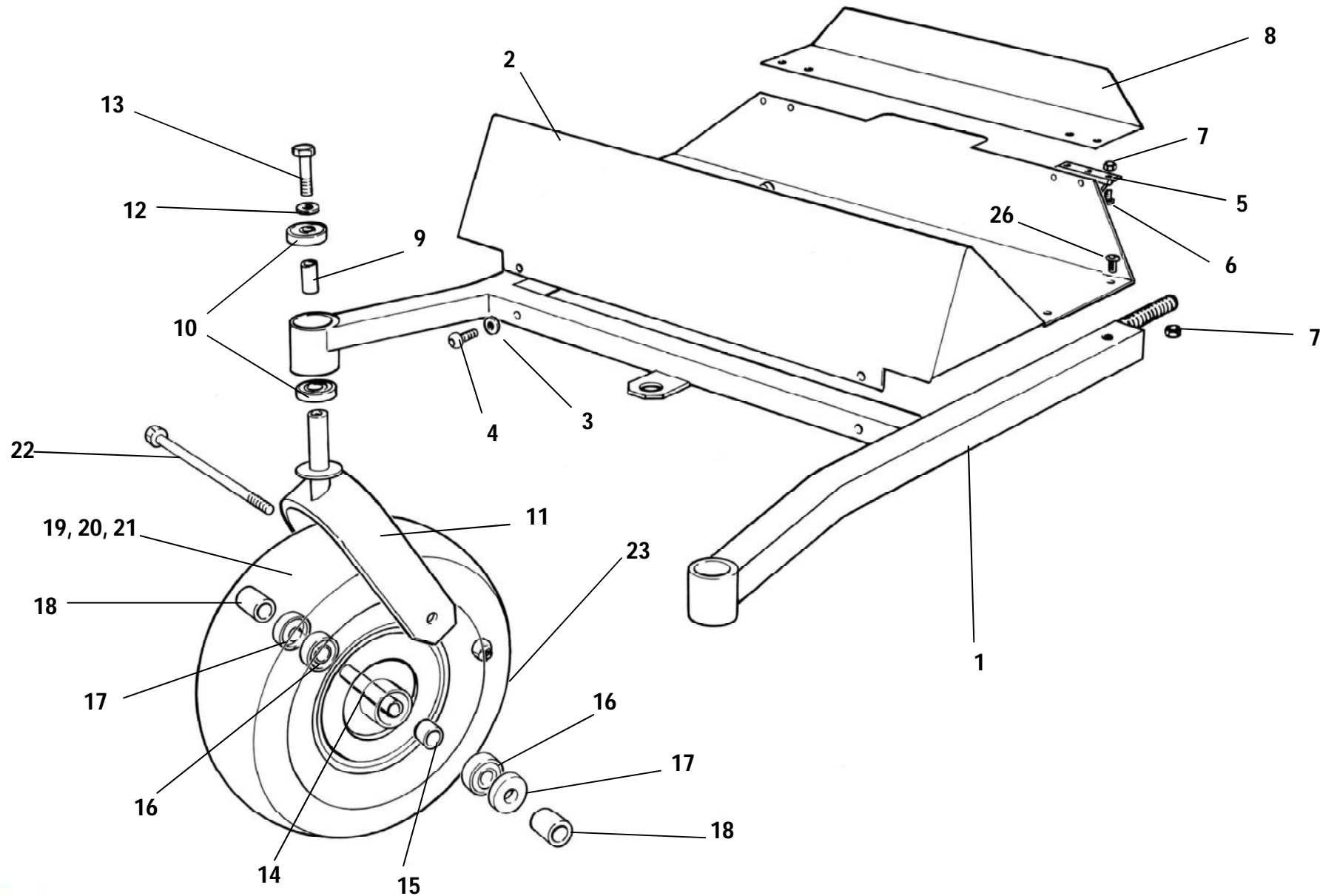




CHASSIS AND BODY PARTS (2)



Item	Description	Part No	Qty	Item	Description	Part No	Qty
1	BRACKET, Fuel Tank Mounting	400506	1	25	BUSH, Bearing, Connecting Arm Guide	400123	2
2	BRACKET, Battery Mounting	400507	1	26	SETSCREW, M10 X 20	750182	2
3	SETSCREW, M10 X 25	750736	4	27	BEARING, Roller	750308	2
4	NUT, Nyloc, M10	750127	4	28	ADJUSTER, Pivot, LH	400227	1
5	PLATE ASSEMBLY, Clutch Anti-Rotate	400315	1	29	ADJUSTER, Pivot, RH	400226	1
6	BOLT, HT, M8 X 50	750123	2	30	PLATE, Swivel, LH	400232	1
7	NUT, Nyloc, M8	750102	2	31	PLATE, Swivel, RH	400230	1
8	SWING ARM, PTO Tensioner	400393	1	32	BOLT, HT, M10 X 35	750138	2
9	BEARING, Roller	750242	4	33	NUT, Nyloc, M16	750128	2
10	SPACER, Bearing	400131	2	34	LEVER, Lock	400523	2
11	BOLT, M10 X 30	750266	2	35	SPRING	400494	2
12	NUT, Nyloc, M10	750127	2	36	PIN, Tension	754119	2
13	BRACE PLATE, Fuel Tank and Battery Bracket	400271	1	37	NIPPLE, Grease	750219	2
14	BOLT, M8 X 20	750116	2	38	SETSCREW, HT, M10 X 50	400287	4
15	NUT, Nyloc, M8	750102	2	39	NUT, Hex, M10	750105	8
16	ARM, Deck CONNECT, LH	400223	1	40	BUSH, Brass	400215	2
17	ARM, Deck CONNECT, RH	400222	1	41	WASHER, Flat, Ø50 X 26 X5	400217	4
18	SPACER	400127	2	42	NUT, Hex, 1" UNC	400216	4
19	BEARING, Roller	400211	4				
20	WASHER, Flat, Ø10 X 21	750153	2				
21	BOLT, M10 X 90	400522	1				
22	BOLT, M10 X 20	750182	1				
23	WASHER, Flat, Ø10 X 21	750153	1				
24	NUT, Nyloc, M10	750127	1				



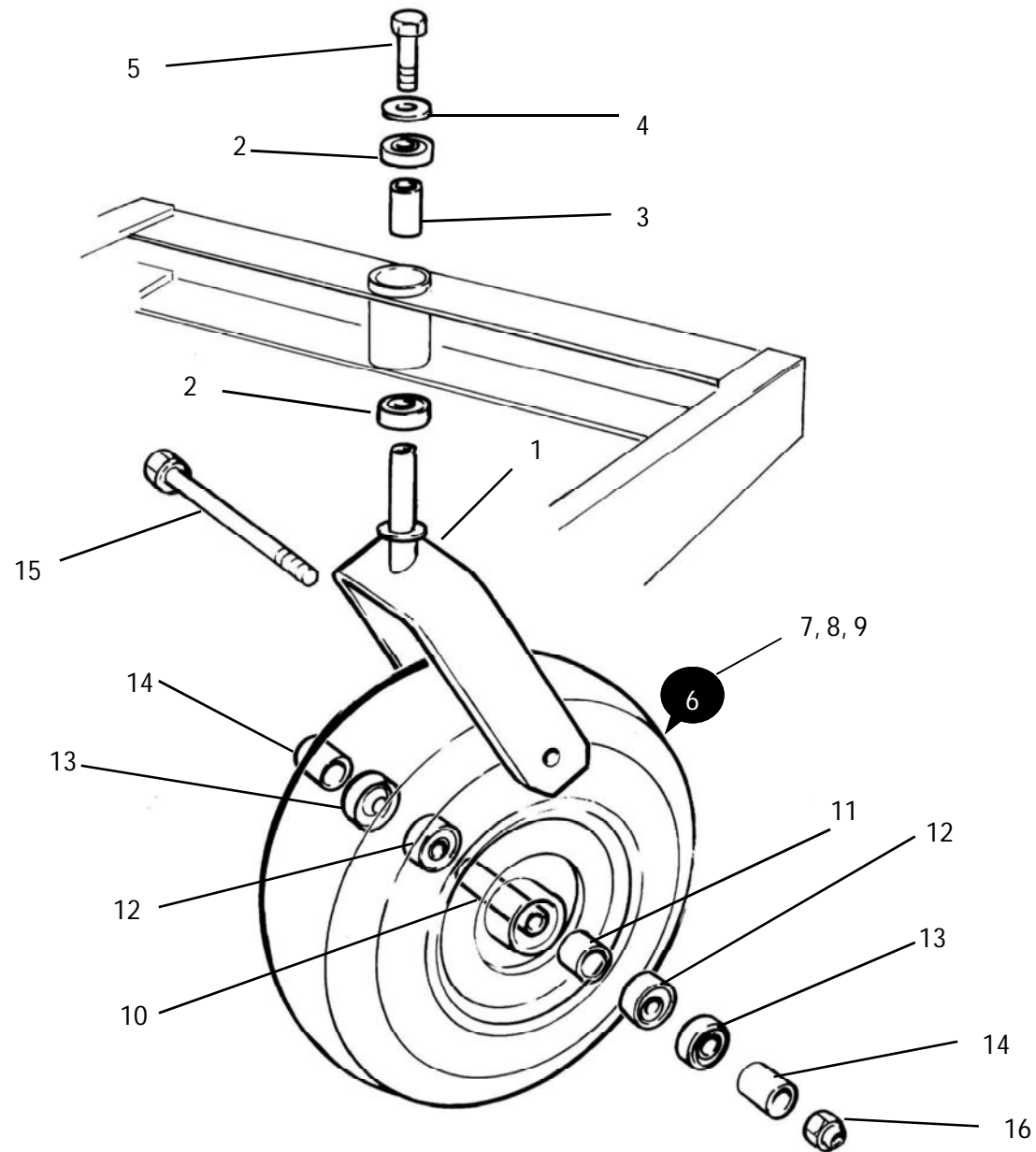


CHASSIS AND BODY PARTS (3)



Item	Description	Part No	Qty	Item	Description	Part No	Qty
1	FRAME, Deck Mounting	400454	1				
2	FOOTPLATE	400384	1				
3	WASHER, Flat, Ø 1/4" X 5/8"	750160	6				
4	SCREW, Button Head, M6 X 12	750201	6				
5	HINGE	750213	2				
6	SCREW, Button Head, M6 X 12	750201	8				
7	NUT, Nyloc, M6	750101	8				
8	FLAP, Footplate	400385	1				
9	SPACER	400128	1				
10	BEARING, Roller	750308	2				
11	BRACKET, Castor	400251	1				
12	WASHER, Flat, Ø10 X 35 X 6	502395	1				
13	SETSCREW, M10 X 30	750266	1				
14	AXLE	400255	1				
15	SPACER, Front Castor Wheel	400605	1				
16	BEARING, Front Castor Wheel	400606	2				
17	SEAL, Front Castor Wheel	400607	2				
18	SPACER	400320	2				
19	RIM, Front Castor Wheel	400608	1				
20	TYRE, 9/350 X4 X 4 slick	400609	1				
21	TUBE, TR87 bent, 300 X 4	400610	1				
22	BOLT, M 10 X 130	400530	1				
23	NUT, Nyloc, M10	750127	1				
24	SCREW, Button Head, M6 X 20	400568	2				

REAR WHEEL INSTALLATION



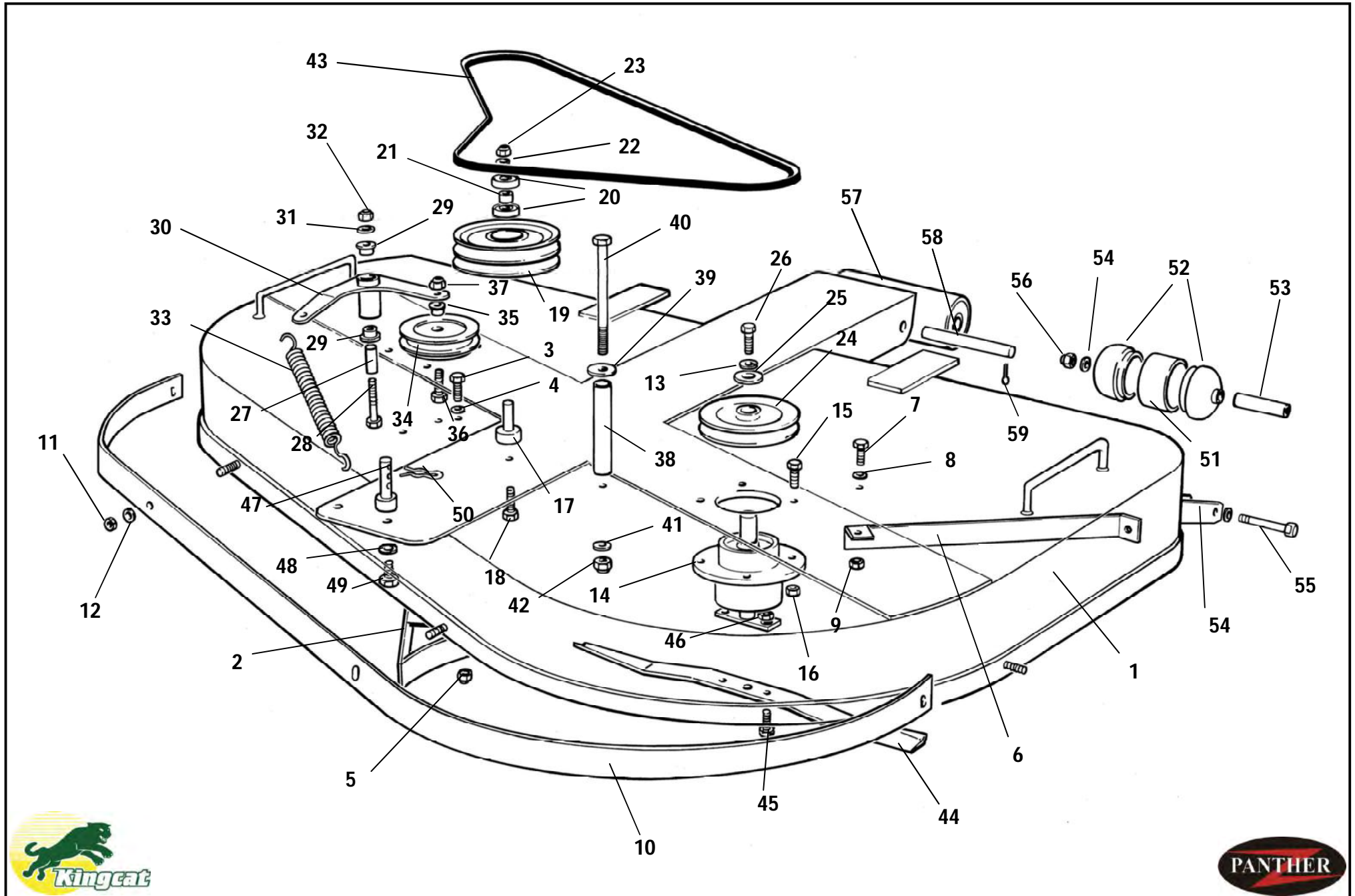


REAR WHEEL INSTALLATION



Item	Description	Part No	Qty	Item	Description	Part No	Qty
1	BRACKET, Castor	400233	1				
2	BEARING	750308	2				
3	SPACER	400128	1				
4	WASHER, Flat, M 10 x 35 x 6	502395	1				
5	BOLT, M10 x 30	750266	1				
6	WHEEL ASSEMBLY	400248	1				
7	TYRE, 13/500 X 6 Rib	400611	1				
8	TUBE, 13/500 X 6	400612	1				
9	RIM	400613	1				
10	AXLE	ZT1134	1				
11	SPACER, Rear Castor Wheel	400605	2				
12	BEARING, Rear Castor Wheel	400606	2				
13	SEAL, Rear Castor Wheel	400614	2				
14	SPACER	ZT1135	2				
15	BOLT, M12 X 180	400286	1				
16	NUT, Nyloc, M12	750104	1				

DECK ASSEMBLY



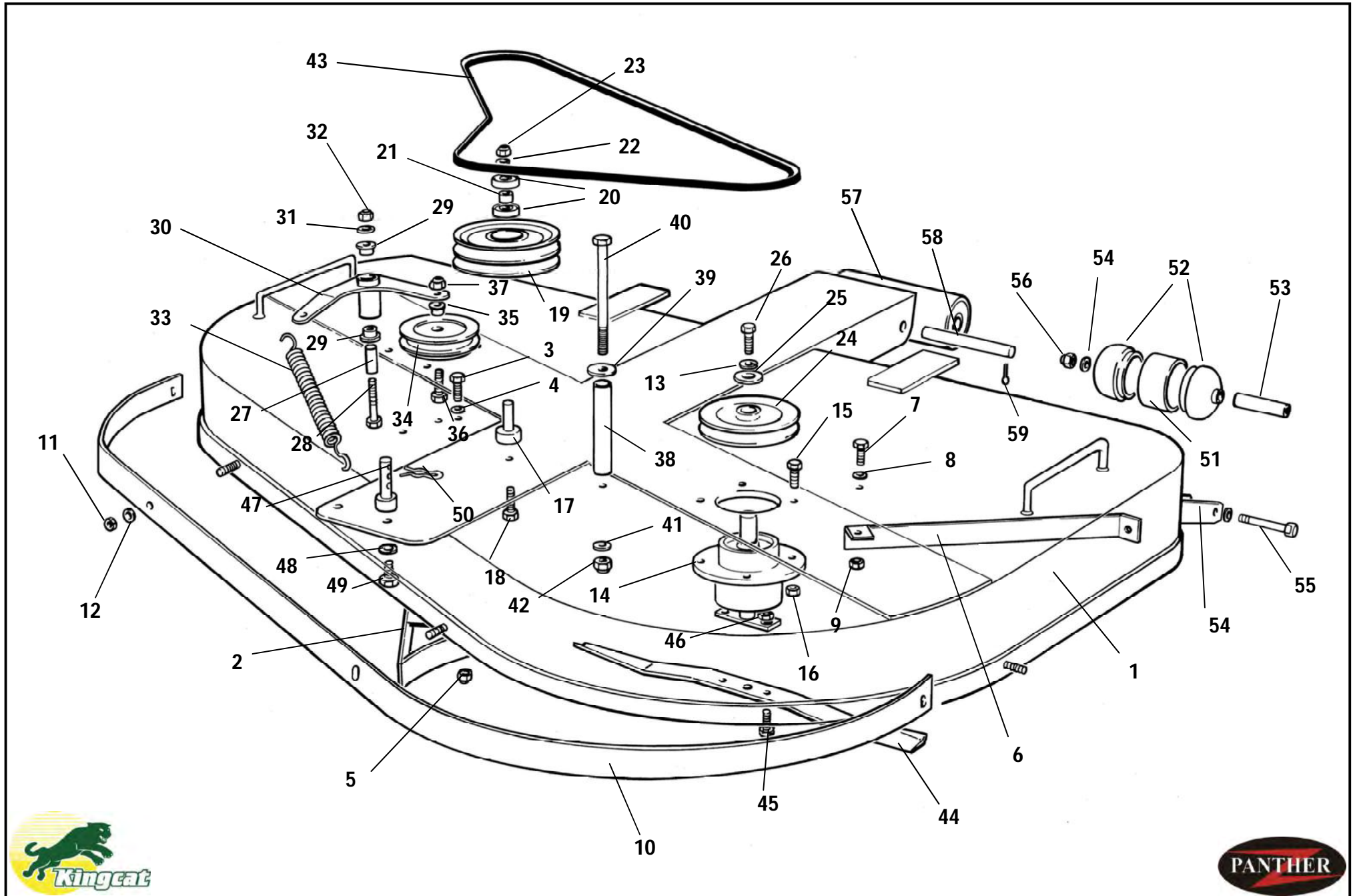


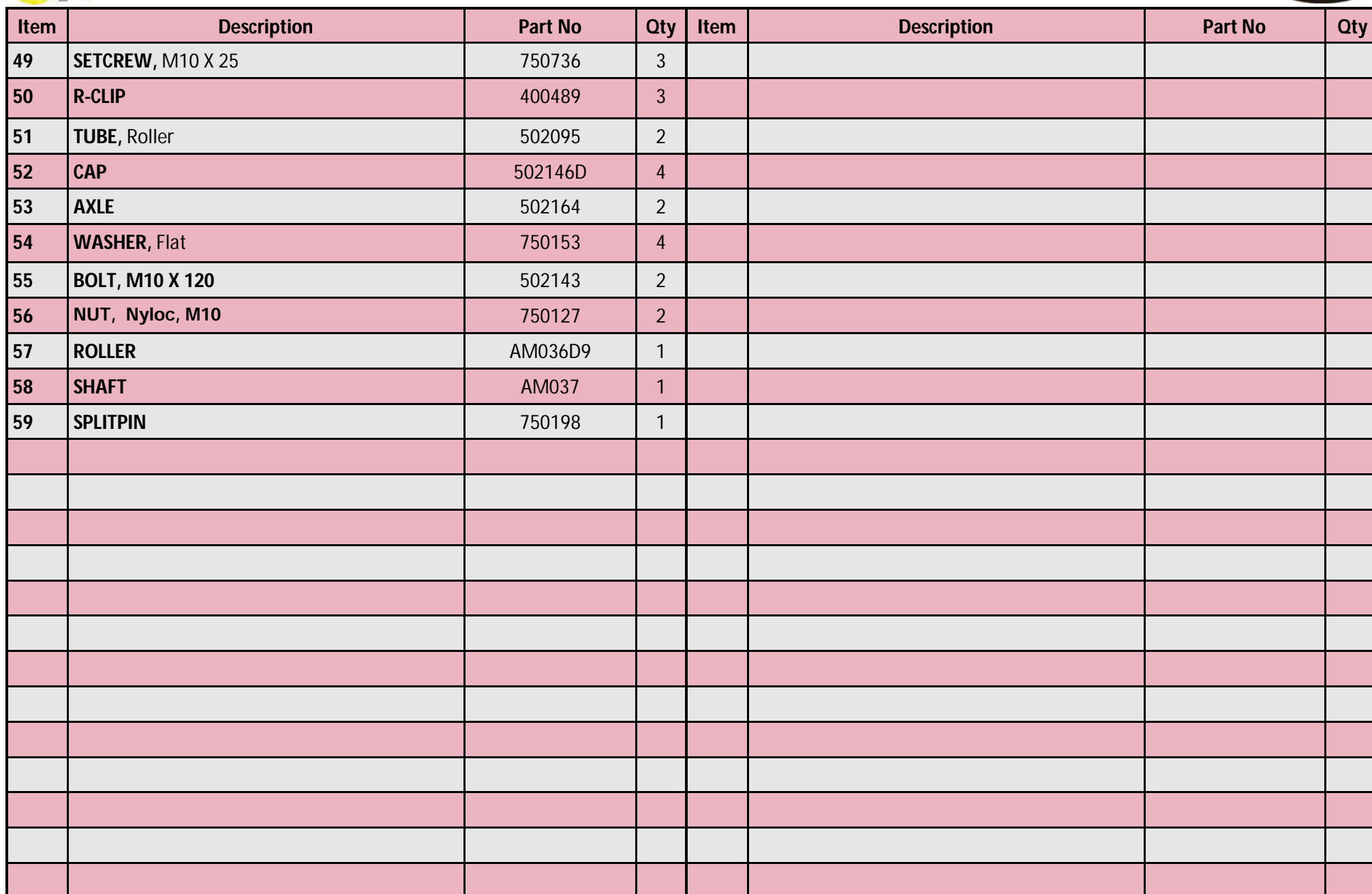
DECK ASSEMBLY



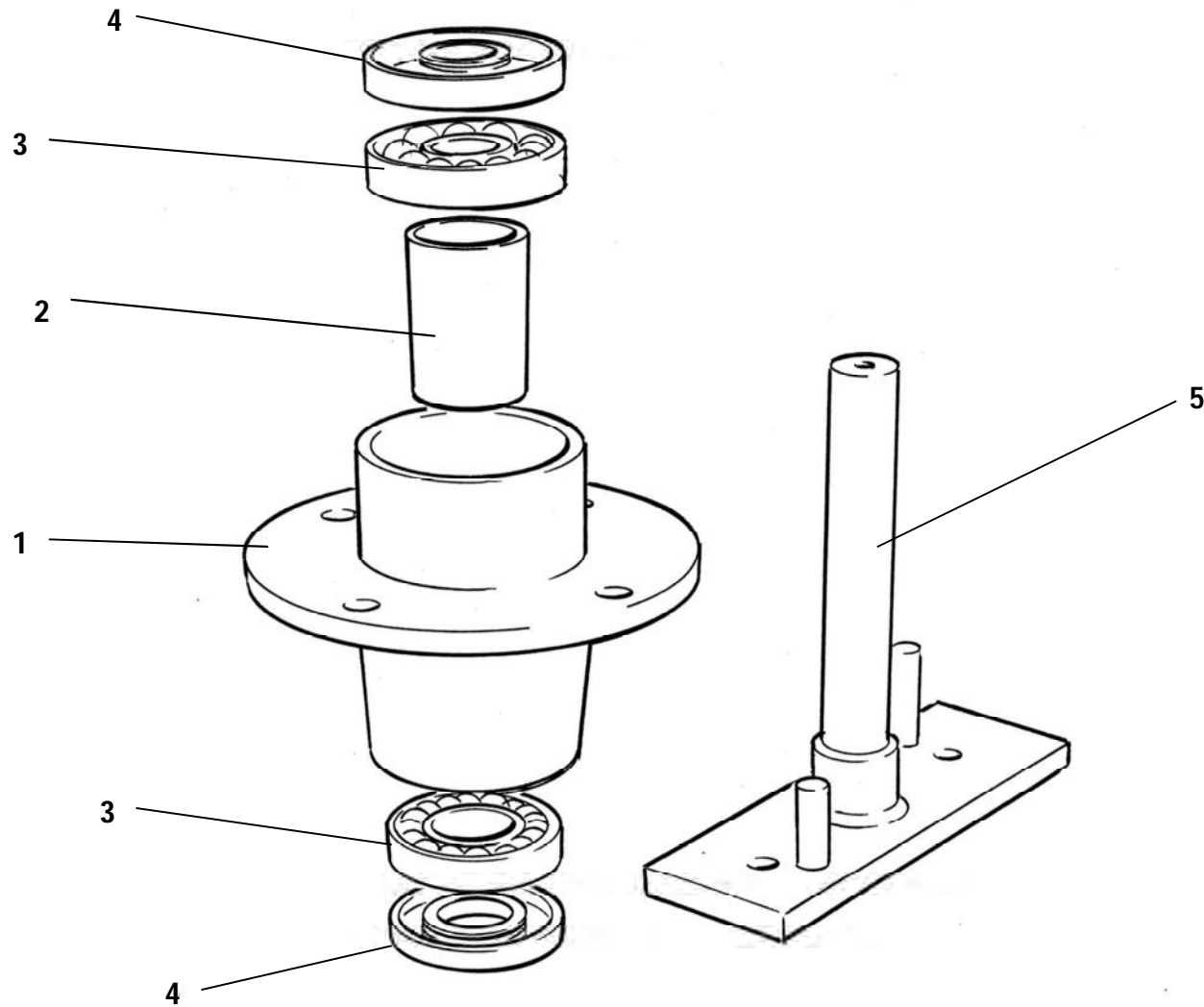
Item	Description	Part No	Qty	Item	Description	Part No	Qty
1	CHASSIS, Deck	400464	1	25	WASHER, Flat, Ø16 X 35 X 6	400451	2
2	BAFFLE, Large	400474	1	26	BOLT, M14 X 30	400396	2
3	SETSCREW, M8 X 16	750181	2	27	PIN, Pivot, Tension Arm	400479	1
4	WASHER, Flat, Ø8 X 21	750156	2	28	BOLT, M8 X 80	750591	1
5	NUT, Nyloc, M8	750102	2	29	BUSH	750250	2
6	BAFFLE, Small	400475	1	30	ARM, Tensioner	400395	1
7	SETSCREW, M8 X 16	750181	2	31	WASHER, Flat, M8 Heavy	WO52003	1
8	WASHER, Flat, Ø8 X 21	750156	2	32	NUT, Nyloc, M8	750102	1
9	NUT, Nyloc, M8	750102	2	33	SPRING, Tension	AM040	1
10	SKIRT, Front	400557	1	34	PULLEY, Tensioner	PIFBB02	1
11	NUT, Nyloc, M8	750102	4	35	BUSH	500609	1
12	WASHER, Flat, Ø8 X 21	750156	4	36	BOLT, 3/8" X 2"	500139	1
13	SPRINGWASHER, M14	400575	1	37	NUT, Nyloc, 3/8"	750135	1
14	SPINDLE ASSEMBLY (See page 17)		2	38	TUBE, Belt Guide	400272	2
15	SETSCREW, M10 X 30	750266	8	39	WASHER, Flat, Ø8 X 21	750156	2
16	NUT, Nyloc, M10	750127	8	40	BOLT, M8 X 80	750591	2
17	PIN, Double Idler Mount	400351	1	41	WASHER, Flat, Ø8 X 21	750156	2
18	BOLT, M10 X 100	850122	1	42	NUT, Nyloc, M8	750102	2
19	PULLEY, Double Idler	400352	1	43	BELT	400602	1
20	BEARING, Roller	BB205215N	2	44	BLADE	400482	2
21	SPACER	400547	1	45	SETCREW, M10 X 30, HT	750266	4
22	WASHER, Flat, Ø10 X 35 X 6	502395	1	46	NUT, Nyloc, M10	750127	4
23	NUT, Nyloc, M10	750127	1	47	PIN	400528	3
24	PULLEY, Spindle	400353	2	48	SPRINGWASHER, M10	750183	3

DECK ASSEMBLY (Continued)





SPINDLE AND HOUSING ASSEMBLY

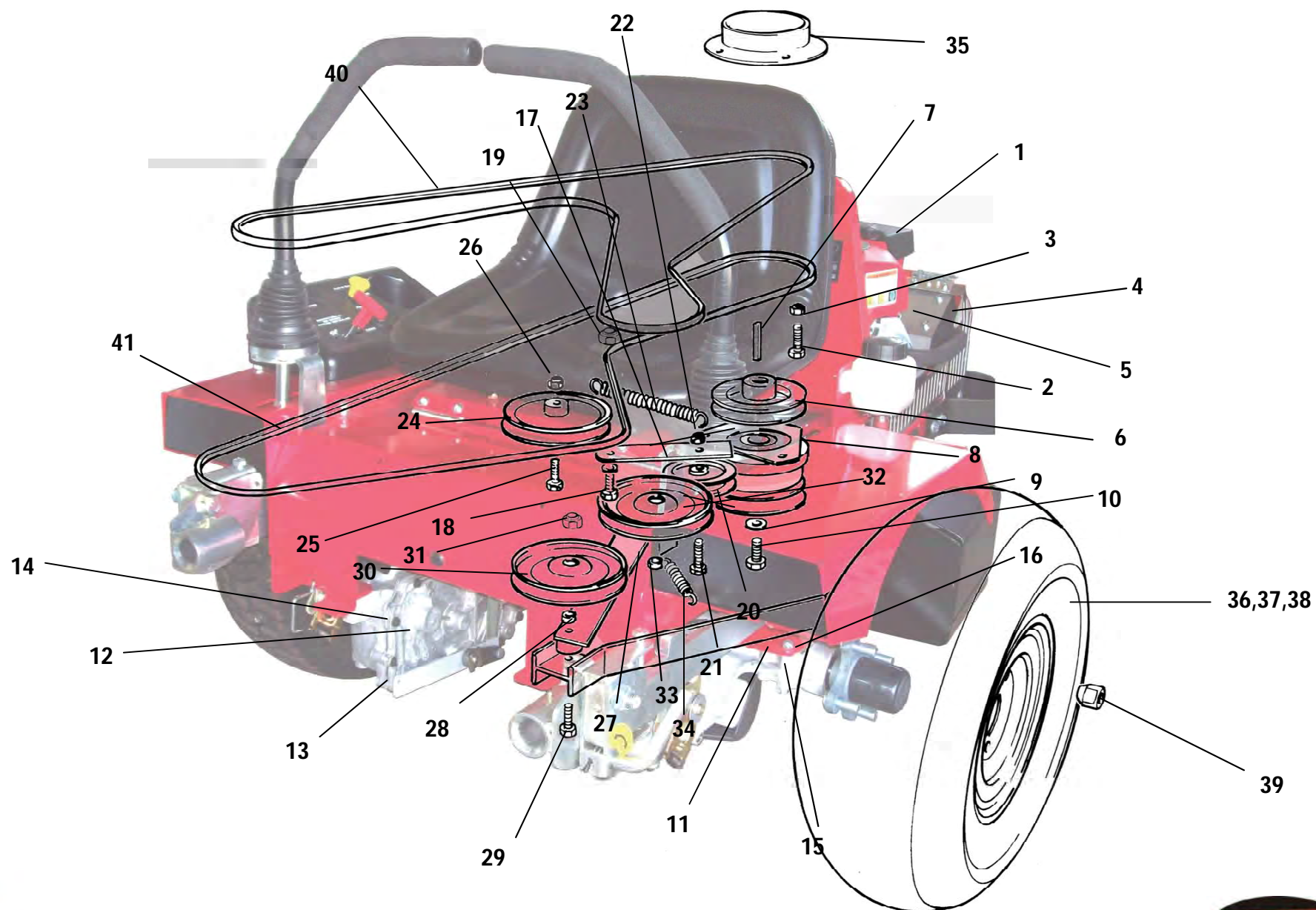




SPINDLE AND HOUSING ASSEMBLY



Item	Description	Part No	Qty	Item	Description	Part No	Qty
1	HOUSING, Spindle	400406	1				
2	SPACER, Bearing	400483	1				
3	BEARING, Roller	BB256217N	2				
4	SEAL, Oil	755211	2				
5	SPINDLE	400449	1				
6							
7							
8							
9							
10							
11							
12							
13							
14							
15							
16							
17							
18							
19							
20							
21							
22							
23							
24							



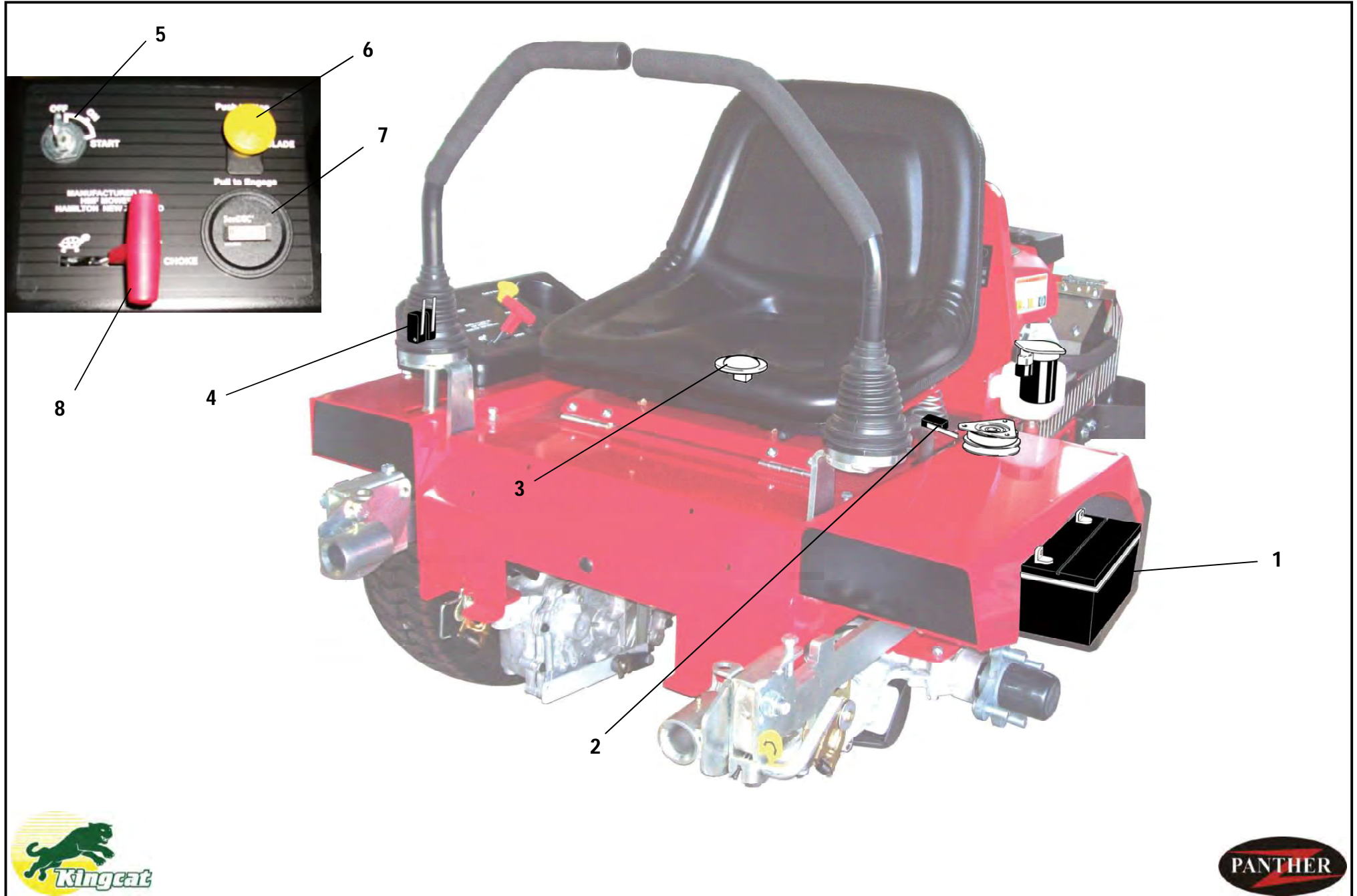


DRIVE INSTALLATION



Item	Description	Part No	Qty	Item	Description	Part No	Qty
1	MOTOR, Honda	E16HP	1	25	BOLT, M10 X 55	850026	1
2	BOLT, M8 X 50	750123	4	26	NUT, Nyloc, M10	750127	1
3	NUT, Nyloc, M8	750102	4	27	ARM, Tensioner	400392	1
4	MUFFLER	400241	1	28	SPACER/BUSH	400133	1
5	HEAT SHIELD	400266	1	29	BOLT, M10 X 90	400522	1
6	PULLEY	400130	1	30	PULLEY	850117	1
7	KEY	400617	1	31	NUT, Nyloc, M10	750127	1
8	CLUTCH, Electric	232201	1	32	PULLEY	850117	1
9	WASHER, Stepped	ZT1173	1	33	SPACER/BUSH	400133	1
10	BOLT, 7/16" X 3" UNF	ZT1193	1	34	SPRING, Tension	AM040	1
11	TRANSMISSION, Hydrostatic, LH	400496	1	35	COWLING	400560	1
12	TRANSMISSION, Hydrostatic, RH	400497	1	36	RIM	400615	2
13	BOLT, M8 X 65	750137	4	37	TUBE, Inner	750301	2
14	NUT, Nyloc, M8	750102	4	38	TYRE	400616	2
15	BOLT, M8 X 65	750137	4	39	NUT, Wheel	750206	8
16	NUT, Nyloc, M8	750102	4	40	BELT, Transmission	400601	1
17	ARM, Tensioner	400394	1	41	BELT, PTO	400210	1
18	BOLT, M10 X 25	750736	1				
19	NUT, Nyloc, M10	750127	1				
20	PULLEY, Tension	850117	1				
21	BOLT, 3/8" X 1 3/4" UNF	850036	1				
22	NUT, Nyloc, 3/8" UNF	750135	1				
23	SPRING, Tension	750385	1				
24	PULLEY	850117	1				

ELECTRICAL INSTALLATION





ELECTRICAL INSTALLATION



Item	Description	Part No	Qty	Item	Description	Part No	Qty
1	BATTERY	AM109	1				
2	LIMIT SWITCH , Park Brake	750769	1				
3	SWITCH, Safety	SSL	1				
4	LIMIT SWITCH	750769	2				
5	SWITCH, Ignition	13125	1				
6	SWITCH, Blade Engage	A012136	1				
7	HOUR METER	AM211	1				
8	LEVER, Throttle, c/w Cable	ZTP188	1				
9*	WIRING HARNESS, Control panel to engine	400484	1				
10*	WIRING HARNESS, Control Panel	400485	1				
11*	WIRING HARNESS, RH Light and Control lever	400486	1				
12*	BATTERY LEAD, Positive	400575	1				
13*	BATTERY LEAD, Negative	400574	1				
	NOTE: *These items not illustrated						



www.kingcat.co.nz

15 Vickery Street, Hamilton 3241, New Zealand. Phone 0800 454 642