

21-2800 & 21-5100 SERVICE SCHEMATIC

ITEMS NOT SHOWN

13 SEALANT

14 OIL, 20W50, 70.3 OZ

200 SEAL KIT

209 HUB PULLER

* - PARTS INCLUDED IN 200 SEAL KIT

- SEAL KIT CONTAINS ITEM #'S: 10, 26, 30, 31, 33, 35, 41, 46, 56, 57, 71, 90, 96, 103, 130, 132, 156, 157, 166

HYDRO-GEAR

P.1 of 11 71370 - P24

13 SEALANT
14 OIL, 20W50, 70.3 OZ
200 SEAL KIT
209 HUB PULLER

- * - PARTS INCLUDED IN 200 SEAL KIT
- SEAL KIT CONTAINS ITEM #'S: 10,26,30,31,33,
35,41,46,56,57,71,90,96,103,130,132,
156,157,166

ZT-2800 & ZT-3100 SERVICE SCHEMATIC

MODEL NUMBER:

Z	
1	2

 -

*			
3	4	5	6

 -

		*	*
7	8	9	10

 -

11	12	13	14

CONTROL TYPE

CHAR 9	CHAR 10	ITEM	COMPONENT	DESCRIPTION	QTY
0, 5, N, P	A	42	50426	STUD, SHORT 5/16-24	1
		43	52298	PUCK, FRICTION	1
		45	44130	WASHER .34X.88X.06	1
		46	51812	TWHCS 5/16-24 X 1.00 (PATCH)	1
		47	50317	NUT, HEX LOCK 5/16-24 UNF	1
	B, C, F, G	42	50426	STUD, SHORT 5/16-24	1
		45	44130	WASHER .34X.88X.06	1
		46	51812	TWHCS 5/16-24 X 1.00 (PATCH)	1
		47	50317	NUT, HEX LOCK 5/16-24 UNF	1
		48	51846	SPACER	1
2,3,4,7, 8,9,A,B, C,D,E,F, G,H,J,K, L,M	B, C, F, G	S	42	50426	STUD, SHORT 5/16-24
			45	44130	WASHER .34X.88X.06
			46	51812	TWHCS 5/16-24 X 1.00 (PATCH)
			140	52527	SPACER .320 X 1.005 X .179
			142	51616	SHCS 5/16-24X1 PATCH
			146	51950	WASHER, .343 X 1.500 X .062

NEUTRAL ARM

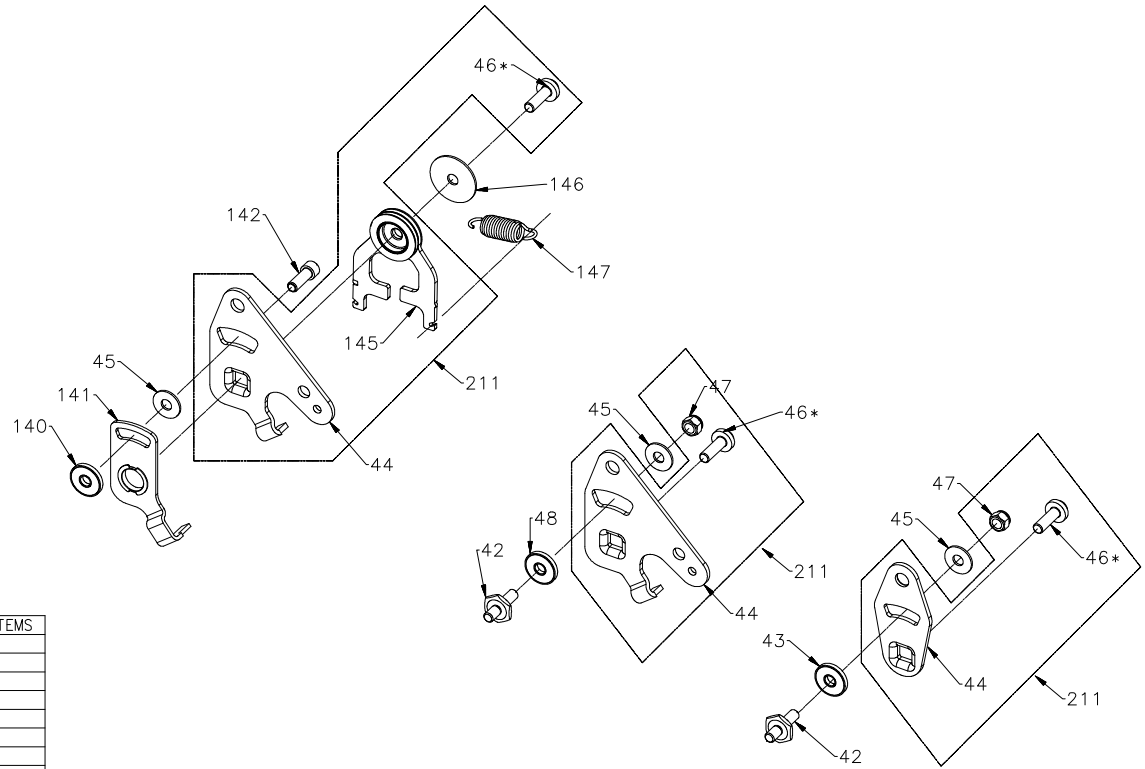
CHAR 9	CHAR 10	ITEM	COMPONENT	DESCRIPTION	QTY
2,3,4,7, 8,9,A,B, C,D,E,F, G,H,J,K, L,M	B,F	141	51945	ARM, NEUTRAL RIGHT	1
	C,G		51946	ARM, NEUTRAL LEFT	1

SPRING

CHAR 9	CHAR 10	ITEM	COMPONENT	DESCRIPTION	QTY
2,3,4,7, 8,9 A, B, C, D, E, F G, H, J, K, L, M	B, C, F, G	147	52401	SPRING, EXTNSN .57 X 2"	1
			51833	SPRING, EXTNSN RTN-34LBS	1
			51605	SPRING, EXTNSN RTN-44LBS	1

RTN ASSEMBLY & CONTROL ARM

CHAR 3	CHAR 9	CHAR 10	ITEM	COMPONENT	DESCRIPTION	QTY	CONTAINS ITEMS
G, H, J, N	2,A,G	C	211	71592	KIT, RTN, BIDIRECTIONAL	1	44,46,145
		G		71598	KIT, RTN, BIDIRECTIONAL	1	44,46,145
		B		71588	KIT, RTN, BIDIRECTIONAL	1	44,46,145
	7,D,K	F		71595	KIT, RTN, BIDIRECTIONAL	1	44,46,145
		C		71593	KIT, RTN, CCW	1	44,46,145
		G		71599	KIT, RTN, CCW	1	44,46,145
	3,B,H	B		71590	KIT, RTN, CW	1	44,46,145
		F		71597	KIT, RTN, CW	1	44,46,145
		C		71594	KIT, RTN, CW	1	44,46,145
	4,C,J	G		71600	KIT, RTN, CW	1	44,46,145
		B		71589	KIT, RTN, CCW	1	44,46,145
		F		71596	KIT, RTN, CCW	1	44,46,145
	9,F,M	A		71633	ARM, CONTROL	1	44,46,47
		C		71635	ARM, CONTROL LH	1	44,46,47
		G		71637	ARM, CONTROL LH	1	44,46,47
	0	A		71633	ARM, CONTROL	1	44,46,47
		B		71634	ARM, CONTROL RH	1	44,46,47
		F		71636	ARM, CONTROL RH	1	44,46,47
	2,A,G	B		71588	KIT, RTN, BIDIRECTIONAL	1	44,46,145
		F		71595	KIT, RTN, BIDIRECTIONAL	1	44,46,145
		C		71592	KIT, RTN, BIDIRECTIONAL	1	44,46,145
	7,D,K	G		71598	KIT, RTN, BIDIRECTIONAL	1	44,46,145
		B		71590	KIT, RTN, CW	1	44,46,145
		F		71597	KIT, RTN, CW	1	44,46,145
	3,B,H	C		71593	KIT, RTN, CCW	1	44,46,145
		G		71599	KIT, RTN, CCW	1	44,46,145
		B		71589	KIT, RTN, CCW	1	44,46,145
	4,C,J	F		71596	KIT, RTN, CCW	1	44,46,145
		C		71594	KIT, RTN, CW	1	44,46,145
		G		71600	KIT, RTN, CW	1	44,46,145
	9,F,M	A		71633	ARM, CONTROL	1	44,46,47
		B		71634	ARM, CONTROL RH	1	44,46,47
		F		71636	ARM, CONTROL RH	1	44,46,47
K, L, M, P	2,A,G	A		71633	ARM, CONTROL	1	44,46,47
		C		71635	ARM, CONTROL LH	1	44,46,47
		G		71637	ARM, CONTROL LH	1	44,46,47



* - PARTS INCLUDED IN 200 SEAL KIT

ITEM	COMPONENT	DESCRIPTION	QTY
200	71410	KIT, SEAL	1

ZT-2800 & ZT-3100 SERVICE SCHEMATIC

MODEL NUMBER:

Z	*
1	2

 -

*		*	*
3	4	5	6

 -

*			
7	8	9	10

 -

11	12	13	14

CHARACTER #:

1	2
---	---

 -

3	4	5	6
---	---	---	---

 -

7	8	9	10
---	---	---	----

 -

11	12	13	14
----	----	----	----

REDUCTION RATIO

CHAR 2	ITEM	COMPONENT	DESCRIPTION	QTY
H	72	52149	GEAR, 16T	1
	81	52148	GEAR, 43T	1
J	72	52344	GEAR, 16T, STEEL	1
	81	52148	GEAR, 43T	1
K	72	52109	GEAR, 14T	1
	81	52110	GEAR, 45T	1
L	72	52341	GEAR, 14T, STEEL	1
	81	52110	GEAR, 45T	1
M	72	52342	GEAR, 13T, STEEL	1
	81	52343	GEAR, 46T	1

SIDE COVER AND GEAR

CHAR 7	CHAR 2	CHAR 3	ITEM #	COMPONENT	DESCRIPTION	QTY
1, 2	H, K	G,H,J,N	2, 82	71541	KIT, COVER, SIDE, RH PM	1
		K,L,M,P		71548	KIT, COVER, SIDE, RH STEEL	1
	J, L, M	G,H,J,N		71542	KIT, COVER, SIDE LH PM	1
		K,L,M,P		71544	KIT, COVER, SIDE LH STEEL	1
3,4,5,6,7	H, K	-----	82	52583	GEAR, 11T	1
	J, L, M	-----		52586	GEAR, 11T, STEEL	1

COMMON PARTS

ITEM	COMPONENT	DESCRIPTION	QTY
22	51448	PLATE, BYPASS	1
26	52162	SEAL, PLUG 1.250 X .250	2
27	52137	HFHCS 3/8-16X1.5 (PATCH)	3
40	51048	TRUNNION, SWASHPLATE	1
60	51462	BEARING, THRUST	1
64	71579	KIT, 16cc PUMP BLOCK	1
65	50551	BRG, THRUST BALL 30X52X13	1
69	70723	ASS'Y, BLOCK 7 PISTON	1
70	44371	WASHER .63X1.0X.05	1
71	44145	RING, RETAINING .625	1
74	51069	WASHER .72X1.16X.04	1
80	50132	WASHER .5X1.0X.03	2
83	51083	JACK SHAFT (PIN)	1
200	71410	KIT, SEAL	1

MOTOR SHAFT

CHAR 7	ITEM	COMPONENT	DESCRIPTION	QTY
3,5,6,7	73	52150	SHAFT, MOTOR	1
4	73	53136	SHAFT, MOTOR	1

CENTER SECTION KITS

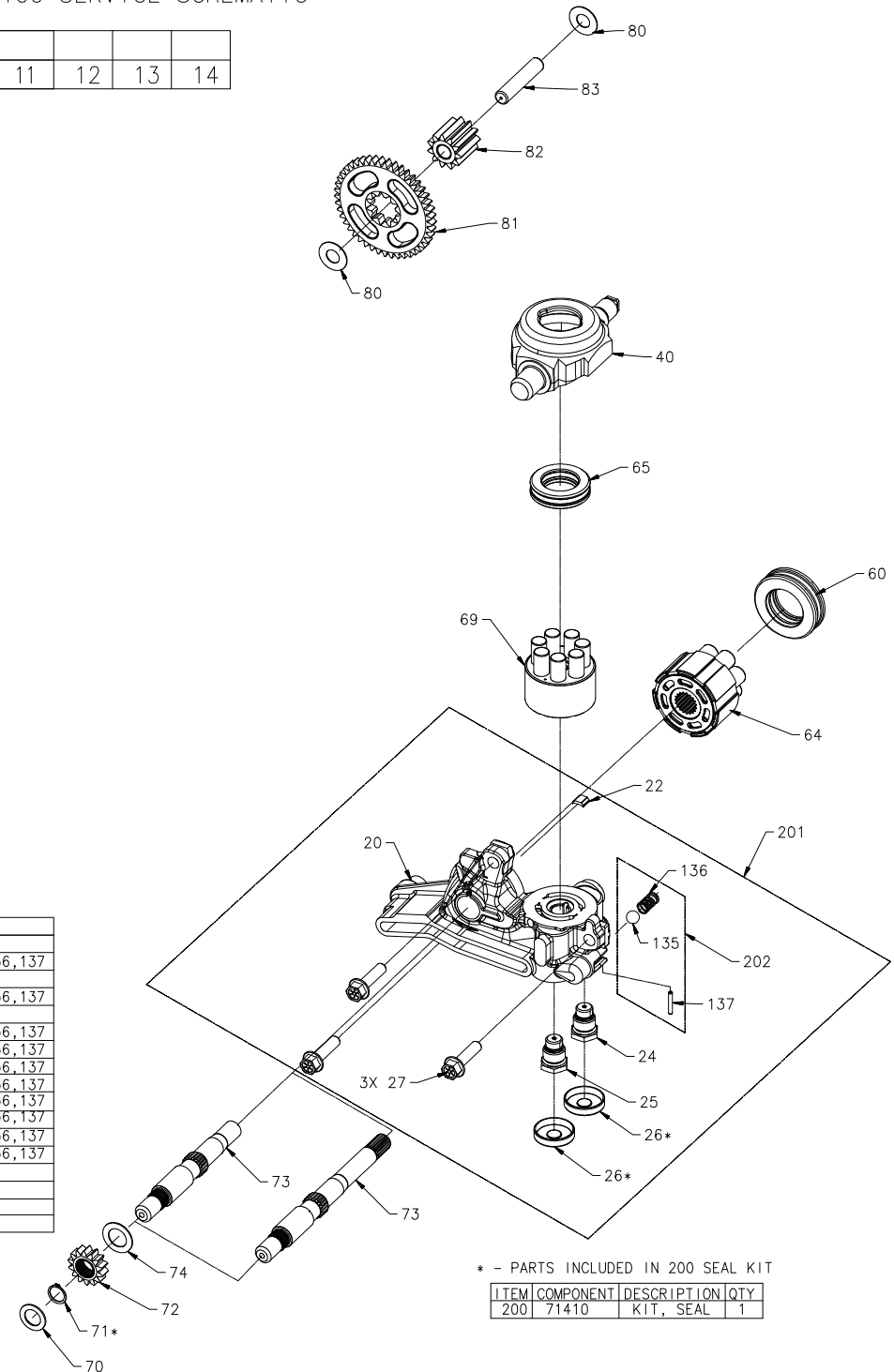
CHAR 7	CHAR 3	CHAR 5	CHAR 6	ITEM	COMPONENT	DESCRIPTION	QTY	CONTAINS ITEMS
3,4,5, 6,7	G THRU M	A THRU R	A THRU R	64	71579	ASS'Y, CYLINDER BLOCK, 16cc	1	64
	G,H,N	E	F		71561	KIT, CENTER SECTION, RH, CHRG	1	20,22,24,25,26,27,135,136,137
	J				71562	KIT, CENTER SECTION, RH	1	20,22,24,25,26,27
	K,L,P				71563	KIT, CENTER SECTION, LH, CHRG	1	20,22,24,25,26,27,135,136,137
	M				71564	KIT, CNTER SECTION, LH	1	20,22,24,25,26,27
	G,H,N				71565	KIT, CENTER SECTION, RH, CHRG	1	20,22,24,25,26,27,135,136,137
	K,L,P				71566	KIT, CENTER SECTION, LH, CHRG	1	20,22,24,25,26,27,135,136,137
	G,H,N	F	E		72114	KIT, CENTER SECTION, RH, CHRG	1	20,22,24,25,26,27,135,136,137
	K,L,P				72115	KIT, CENTER SECTION, LH, CHRG	1	20,22,24,25,26,27,135,136,137
	G,N				71838	KIT, CENTER SECTION, RH, CHRG	1	20,22,24,25,26,27,135,136,137
	K,P				71839	KIT, CENTER SECTION, LH, CHRG	1	20,22,24,25,26,27,135,136,137
	G,N				71638	KIT, CENTER SECTION, RH, CHRG	1	20,22,24,25,26,27,135,136,137
	K,P				71639	KIT, CENTER SECTION, LH, CHRG	1	20,22,24,25,26,27,135,136,137
	J	B	C		71567	KIT, CENTER SECTION, RH	1	20,22,24,25,26,27
	M				71568	KIT, CENTER SECTION, LH	1	20,22,24,25,26,27
	J				71580	KIT, CENTER SECTION, RH	1	20,22,24,25,26,27
	M				71581	KIT, CENTER SECTION, LH	1	20,22,24,25,26,27

CHARGE RELIEF KIT

CHAR 3	ITEM	COMPONENT	DESCRIPTION	QTY	CONTAINS ITEMS
G,H,K,L,N,P	202	71436	KIT, CHARGE RELIEF	1	135,136,137

CENTER SECTION KIT AND BLOCK ASSEMBLY

CHAR 7	CHAR 3	CHAR 5	CHAR 6	ITEM	DESCRIPTION
1, 2	G, K	A THRU R	A THRU R	64	REFERENCE SHEET 9 FOR UNIT REPLACEMENT (REFERENCE BLN-52696)
				201	



* - PARTS INCLUDED IN 200 SEAL KIT

ITEM	COMPONENT	DESCRIPTION	QTY
200	71410	KIT, SEAL	1

ZT-2800 & ZT-3100 SERVICE SCHEMATIC

MODEL NUMBER:

Z	
---	--

 -

	*		
--	---	--	--

 -

--	--	--	--

 -

--	--	--	--

 -

--	--	--	--

CHARACTER #:

1	2
---	---

 -

3	4	5	6
---	---	---	---

 -

7	8	9	10
---	---	---	----

 -

11	12	13	14
----	----	----	----

AXLE KITS (CONTAIN ITEM #'S 94 & 109)

CHAR 4	ITEM	COMPONENT	DESCRIPTION	QTY
A THRU E L, M	212	71569	KIT, SHAFT, AXLE	1
		71570	KIT, SHAFT, AXLE	1
F THRU K N, P				

HUB KITS (INCLUDES HUB AND STUDS)

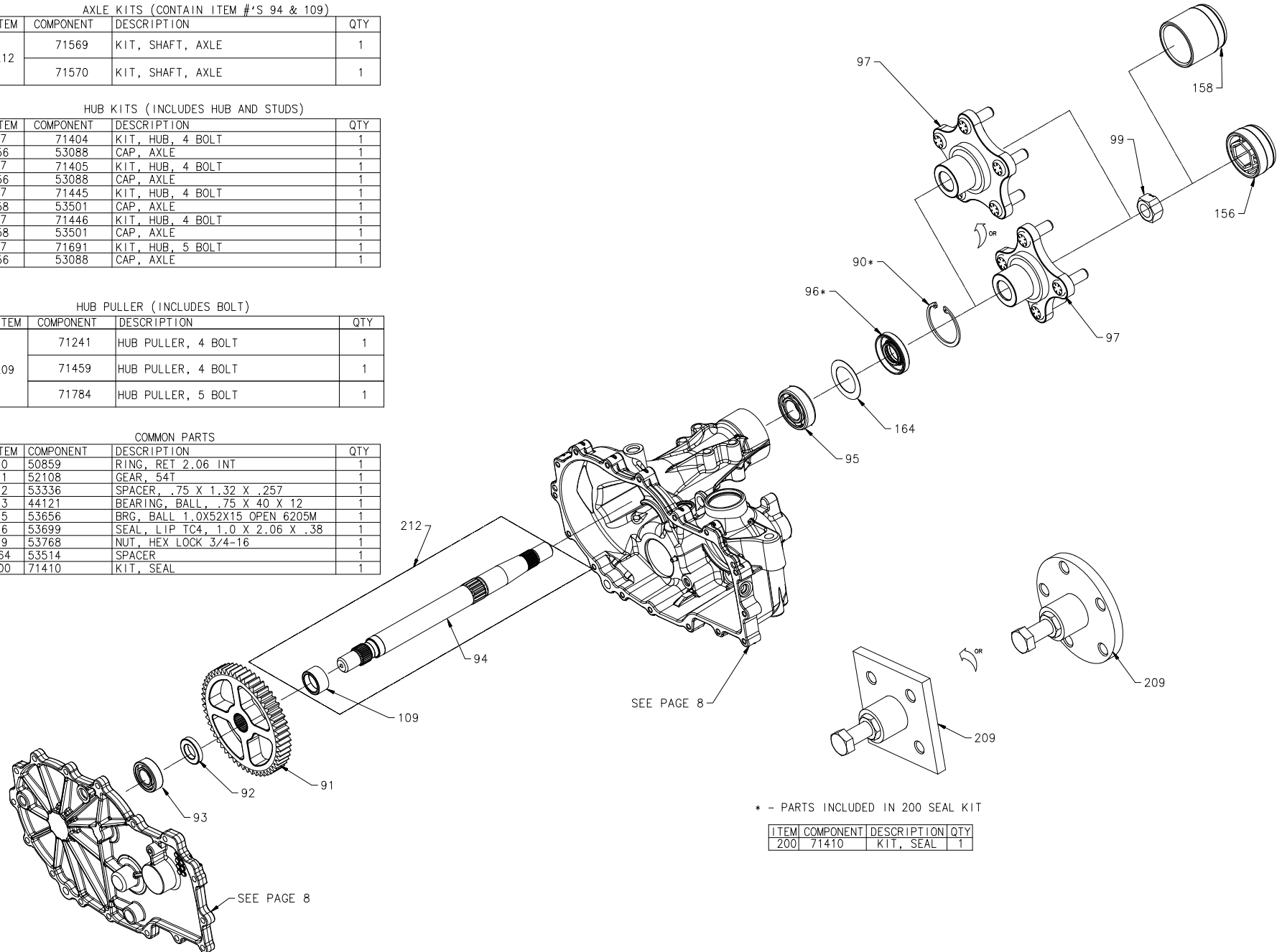
CHAR4	ITEM	COMPONENT	DESCRIPTION	QTY
B, G	156	71404	KIT, HUB, 4 BOLT	1
		53088	CAP, AXLE	1
C, H	156	71405	KIT, HUB, 4 BOLT	1
		53088	CAP, AXLE	1
L, N	158	71445	KIT, HUB, 4 BOLT	1
		53501	CAP, AXLE	1
M, P	158	71446	KIT, HUB, 4 BOLT	1
		53501	CAP, AXLE	1
E, K	156	71691	KIT, HUB, 5 BOLT	1
		53088	CAP, AXLE	1

HUB PULLER (INCLUDES BOLT)

CHAR4	ITEM	COMPONENT	DESCRIPTION	QTY
B, C, G, H	209	71241	HUB PULLER, 4 BOLT	1
		71459	HUB PULLER, 4 BOLT	1
E, K		71784	HUB PULLER, 5 BOLT	1

COMMON PARTS

ITEM	COMPONENT	DESCRIPTION	QTY
90	50859	RING, RET 2.06 INT	1
91	52108	GEAR, 54T	1
92	53336	SPACER, .75 X 1.32 X .257	1
93	44121	BEARING, BALL, .75 X .40 X .12	1
95	53656	BRG, BALL 1.0X52X15 OPEN 6205M	1
96	53699	SEAL, LIP TC4, 1.0 X 2.06 X .38	1
99	53768	NUT, HEX LOCK 3/4-16	1
164	53514	SPACER	1
200	71410	KIT, SEAL	1



* - PARTS INCLUDED IN 200 SEAL KIT

ITEM	COMPONENT	DESCRIPTION	QTY
200	71410	KIT, SEAL	1

ZT-2800 & ZT-3100 SERVICE SCHEMATIC

MODEL NUMBER: Z - * - * - *
 CHARACTER #: 1 2 - 3 4 5 6 - 7 8 9 10 - 11 12 13 14

BYPASS ARM

CHAR 11	ITEM	COMPONENT	DESCRIPTION	QTY
1	34	51629	ARM, BYPASS	1
2		51910	ARM, BYPASS	1
3		52370	ARM, BYPASS	1
4		52742	ARM, BYPASS	1

BRAKE ARM

CHAR 7	CHAR 3	ITEM	COMPONENT	DESCRIPTION	QTY
1	G,H,J, K,L,M, N,P	102	52501	HANDLE, BRAKE	1
2			52172	ARM, BRAKE	1
3,6,7			52639	HANDLE, ACTUATING	1
5			71957	KIT, BRAKE ARM RIGHT HAND	1
	G,H,J,N K,L,M,P		71958	KIT, BRAKE ARM LEFT HAND	1

BRAKE SHAFT

CHAR 7	CHAR 8	ITEM	COMPONENT	DESCRIPTION	QTY
3,5,6,7	A,B,C, E,F,G J,K,L, N,P,R	101	52651	SHAFT, BRAKE	1
			REFERENCE SHEET 11 FOR BRAKE SHAFT OPTIONS		

CHARGE COMPONENTS

CHAR 3	ITEM	COMPONENT	DESCRIPTION	QTY
G,H,K, L,N,P	130	52157	TUBE, CONNECTING	2
	131	50273	GEROTOR ASSEMBLY (1.9 cc/rev)	1
	132	52250	O-RING, -137, 0.103 X 2.050	1
	134	50752	HFHCS 1/4-20X.75	2
	157	53456	SEAL, LIP 8 X 12 X 3 VC	1
G,H,K,L N,P	133	52688	COVER, CHARGE PUMP	1
	133	53468	COVER, PM CHARGE PUMP	1

INPUT SHAFT AND CHARGE KITS

CHAR 3	CHAR 12	ITEM	COMPONENT	DESCRIPTION	QTY	CONTAINS ITEMS
G,H,K,L	A-H	203	71411	KIT, CHARGE PUMP	1	131,132,133,134
	L-Y	210	71442	KIT, INPUT SHAFT	1	52,53,54
	A-H,L-Y	216	72234	KIT, CHARGE COVER	1	132,133,134
N,P	A-H	203	71977	KIT, CHARGE PUMP	1	131,132,133,134
	L-Y	210	71442	KIT, INPUT SHAFT	1	52,53,54
J,M		210	71443	KIT, INPUT SHAFT	1	52,53,54

BRAKE BIAS SPRING

CHAR 7	CHAR 3	ITEM	COMPONENT	DESCRIPTION	QTY
5,6	G,H,J,N K,L,M,P	159	53429	SPRING, TORSION, CCW	1
			53483	SPRING, TORSION, CW	1
7	G,H,J,N	165	53781	GUIDE, SPRING RETURN	1
		168	53783	SPRING, TORSION, RH	1
	K,L,M,P	165	53781	GUIDE, SPRING RETURN	1
		168	53782	SPRING, TORSION, LH	1

COMMON PARTS

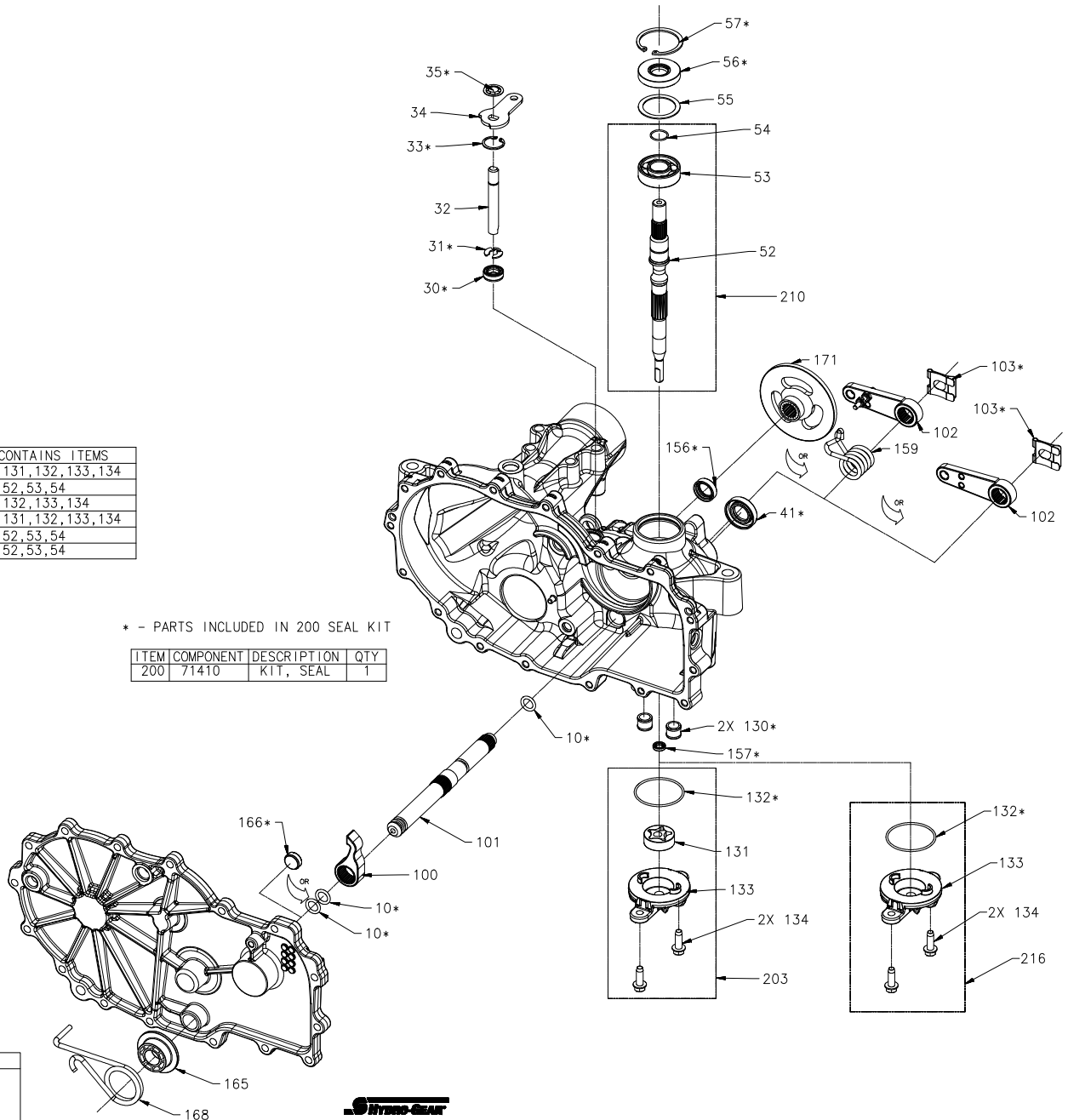
ITEM	COMPONENT	DESCRIPTION	QTY
30	51626	SEAL, LIP .375X.75X.25	1
31	51628	RING, RET .375 EXTRNL	1
32	52136	ROD, BYPASS	1
33	51627	RING, RET .750 INTRNL	1
35	51630	RING, RTNG .375 EXT	1
41	51140	SEAL, LIP 12 X 32 X 7	1
55	50951	WASHER 1.23X1.56X.04	1
56	51161	SEAL, LIP 17X40X7	1
57	50329	RING, RETAINING	1

BRAKE COMPONENT

CHAR 7	ITEM	COMPONENT	DESCRIPTION	QTY
3,5,6,7	10	51804	O-RING - 111 .103 X .424	3
	100	52766	PAWL, BRAKE	1
	103	52027	CLIP, RETAINING	1
4	156	53138	SEAL, LIP .625 x .875 x .25	1
	166	53139	SEAL, PLUG .64 x .25	1
	171	52582	BRAKE ROTOR	1

BRAKE COMPONENT

CHAR 7	ITEM	DESCRIPTION
1,2	100	REFERENCE SHEET 9 FOR UNIT REPLACEMENT (REFERENCE BLN-52696)
	101	
	104	
	208	



* - PARTS INCLUDED IN 200 SEAL KIT

ITEM	COMPONENT	DESCRIPTION	QTY
200	71410	KIT, SEAL	1

ZT-2800 & ZT-3100 SERVICE SCHEMATIC

MODEL NUMBER:

Z

-

*

-

-

*

CHARACTER #:

1

2

-

3

4

5

6

-

7

8

9

10

-

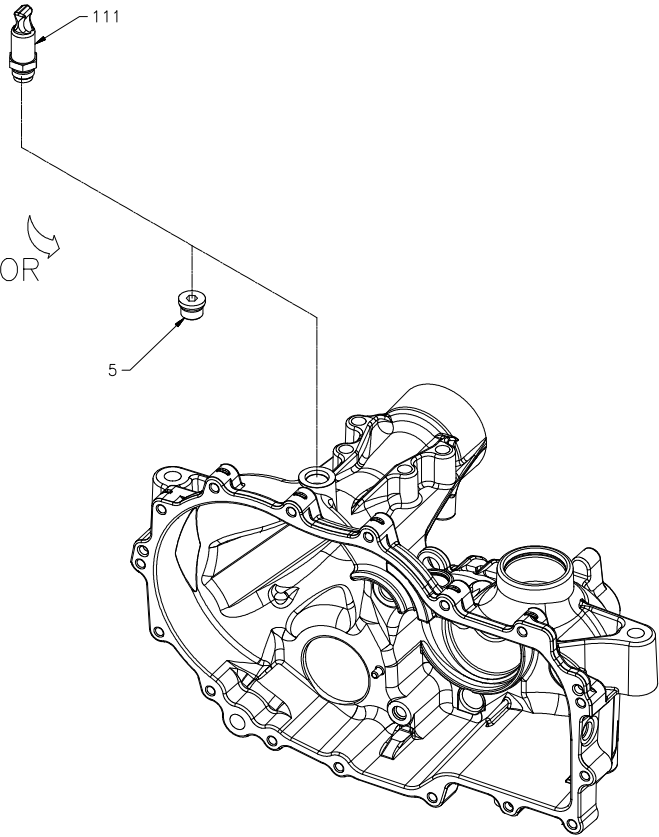
11

12

13

14

BREATHER FITTINGS					
CHAR 5	CHAR 13	ITEM	COMPONENT	DESCRIPTION	QTY
A THRU G	L	111	71393	FITTING, STR 9/16-18 SAE .5 BARB	1
	R	5	9005110-5600	PLUG 9/16-18 (METAL)	1
	X	4	9005200-5600	PLUG 9/16-18 (PLASTIC)	1
	X	5	9005110-5600	PLUG 9/16-18 (METAL)	3



ZT-2800 & ZT-3100 SERVICE SCHEMATIC

MODEL NUMBER:

Z	
---	--

 -

*			
---	--	--	--

 -

--	--	--	--

 -

	*		
--	---	--	--

CHARACTER #:

1	2
---	---

 -

3	4	5	6
---	---	---	---

 -

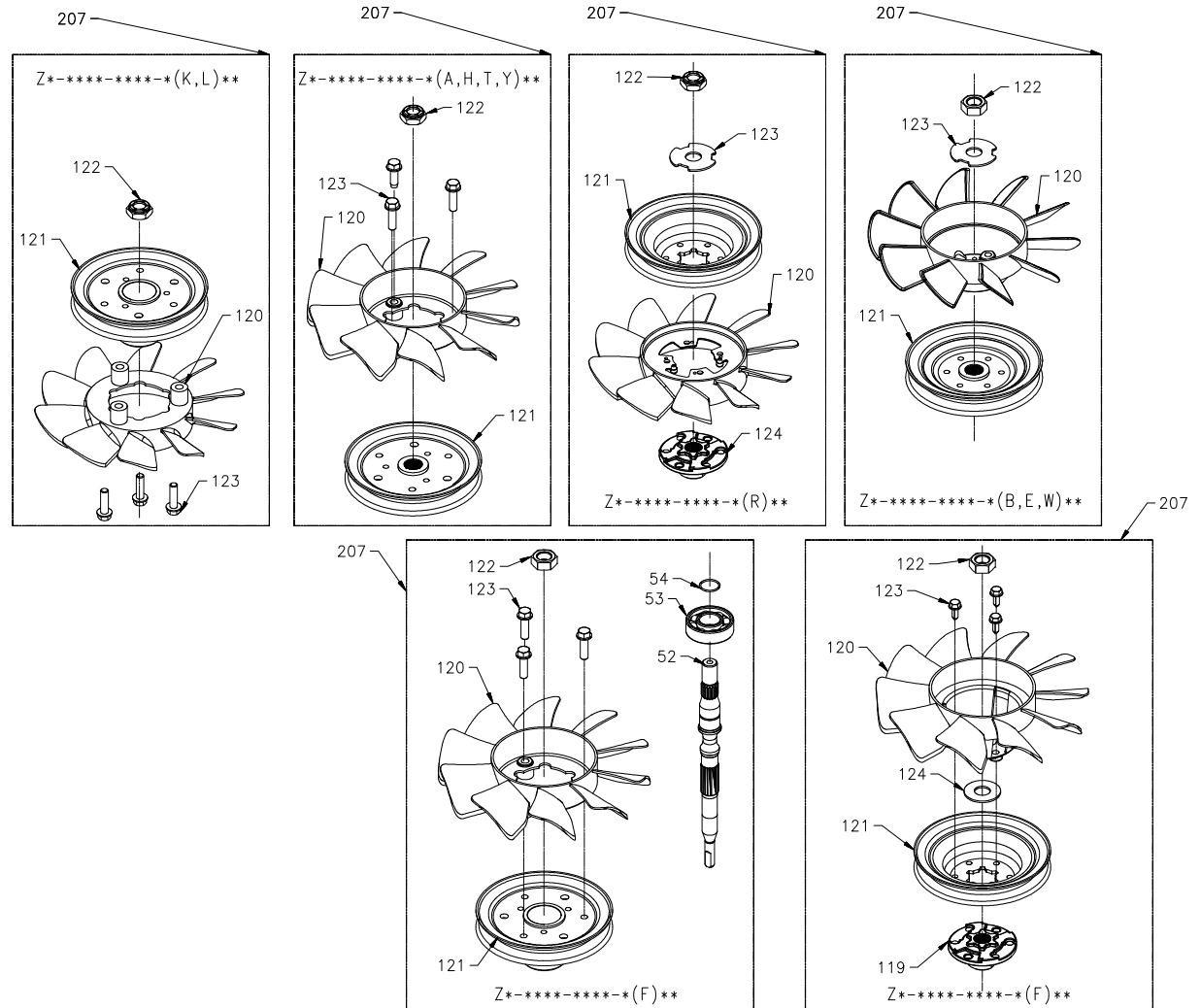
7	8	9	10
---	---	---	----

 -

11	12	13	14
----	----	----	----

FAN & PULLEY KIT

CHAR12	CHAR3	ITEM	COMPONENT	DESCRIPTION	QTY
X				N/A	
A		207	71694	KIT, FAN & PULLEY	1
		120	52901	FAN 7.0 (10 BLADE)	1
		121	50302	PULLEY, 4.5 X 1.625	1
		122	44133	NUT, HEX JAM 1/2-20 W/PATCH	1
B	G	123	51076	SCREW, HEX 1/4-20 X .875	3
		207	70630	KIT, FAN & PULLEY	1
		120	51230	FAN 7.0 (10 BLADE)	1
		121	51416	PULLEY	1
E	P	122	44133	NUT, HEX JAM 1/2-20 W/PATCH	1
		123	51523	WASHER, OD SLOTTED .53X1.63X.0	1
		207	70489	KIT, FAN & PULLEY	1
		120	51862	FAN, 7.0 (10 BLADE)	1
		121	51875	PULLEY 4.5 INCH	1
		122	44133	NUT, HEX 1/2-20 PATCH	1
		123	51523	WASHER, OD SLOTTED .53X1.63X.0	1
		207	71937	KIT, FAN & PULLEY	1
	J, M	119	52366	HUB, PULLEY 1.56	1
		120	53466	FAN 7.0 (10 BLADE)	1
		121	52364	PULLEY 4.5 X 1.625	1
		122	44133	NUT, HEX JAM 1/2-20 W/PATCH	1
		123	50851	HFHCS 1/4-20 X .875	3
		124	53504	WASHER, FLAT .530 X 1.20 X .06	1
		207	71833	KIT, FAN & PULLEY	1
	F	52		SHAFT, INPUT	1
		53		BEARING, BALL 17MM X 40MM 12 MM	1
		54		RING, RETAINING	1
		120		FAN 7.0 (BLADE)	1
	G, K, L, P	121		PULLEY 4.5	1
		122	44133	NUT, HEX JAM 1/2-20 W/PATCH	1
		123	51076	HFHCS 1/4-20 X .875	3
		207	71826	KIT, FAN & PULLEY	1
	H	120	52576	FAN 7.0 (10 BLADE)	1
		121	51182	PULLEY 4.5 INCH	1
		122	44133	NUT, HEX JAM 1/2-20 W/PATCH	1
		123	51076	HFHCS 1/4-20 X .875	3
	K	207	71333	KIT, FAN & PULLEY	1
		120	52315	FAN, 7.0 (10 BLADE)	1
		121	50302	PULLEY 4.5 INCH	1
		122	44133	NUT, HEX JAM 1/2-20 W/PATCH	1
	L	123	51076	HFHCS 1/4-20 X .875	3
		207	71699	KIT, FAN & PULLEY	1
		120	52735	FAN, 7.0 (10 BLADE)	1
		121	50302	PULLEY 4.5 INCH	1
	G	122	44133	NUT, HEX JAM 1/2-20 W/PATCH	1
		123	51076	HFHCS 1/4-20 X .875	3
		207	71721	KIT, FAN & PULLEY	1
	P	120	53050	FAN 7.0, 10 BLADE	1
		121	52364	DISC, PULLEY	1
		122	44133	NUT, HEX JAM 1/2-20 W/PATCH	1
		123	51523	WASHER, OD SLOTTED .53X1.63X.0	1
	T	124	52366	HUB	1
		207	71511	KIT, FAN & PULLEY	1
		120	52576	FAN 7.0 (10 BLADE)	1
		121	51182	PULLEY 4.5	1
		122	44133	NUT, HEX JAM 1/2-20 W/PATCH	1
		123	51076	HFHCS 1/4-20 X .875	3
		207	71552	KIT, FAN & PULLEY	1
	W	120	52747	FAN 7.0 (10 BLADE)	1
		121	52685	PULLEY 5.0 INCH	1
		122	44133	NUT, HEX JAM 1/2-20 W/PATCH	1
		123	51523	WASHER, OD SLOTTED .53 X 1.63 X .06	1
	Y	207	71655	KIT, FAN & PULLEY	1
		120	52901	FAN 7.0 (10 BLADE)	1
		121	51182	PULLEY 4.5	1
		122	44133	NUT, HEX JAM 1/2-20 W/PATCH	1
		123	51076	SCREW, HEX 1/4-20 X .875	3



ZT-2800 & ZT-3100 SERVICE SCHEMATIC

MODEL NUMBER: Z
 CHARACTER #: 1 2

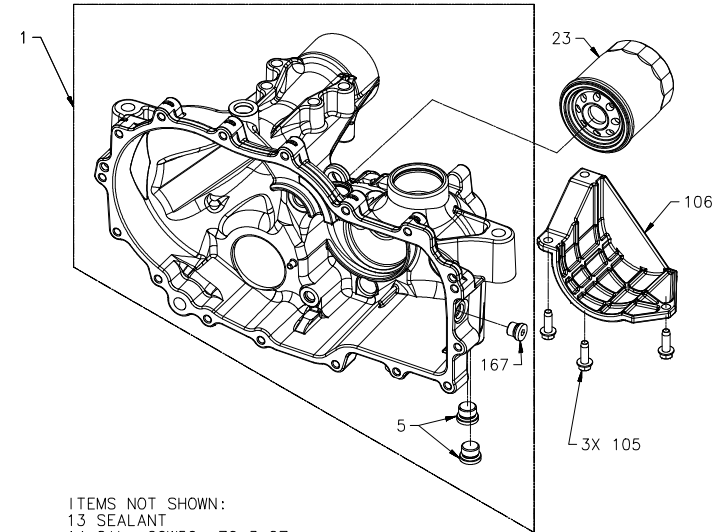
- * 3 4 * 5 6

- * 7 8 * 9 10

- 11 12 13 14

MAIN HOUSING KITS (INCLUDES BUSHINGS AND PINS)

CHAR 7	CHAR 5	CHAR3	CHAR9	ITEM	COMPONENT	DESCRIPTION	QTY	CONTAINS ITEMS
1,3,5,6,7	A THRU G	G,H,N	0 THRU 4,A THRU C, G THRU J & N	1	71412	KIT, HOUSING, MAIN, RH, CHRG	1	
			5 THRU 9,D THRU F, K THRU M & P		71413	KIT, HOUSING,MAIN,RH,CHRG, CNTL	1	
		J	0 THRU 4,A THRU C, G THRU J & N		71414	KIT, HOUSING, MAIN, RH	1	
			5 THRU 9,D THRU F, K THRU M & P		71415	KIT, HOUSING, MAIN, RH, CNTL	1	
		K,L,P	0 THRU 4,A THRU C, G THRU J & N		71420	KIT, HOUSING, MAIN, LH, CHRG	1	
			5 THRU 9,D THRU F, K THRU M & P		71421	KIT, HOUSING,MAIN,LH,CHRG, CNTL	1	
		M	0 THRU 4,A THRU C, G THRU J & N		71424	KIT, HOUSING, MAIN, LH	1	
			5 THRU 9,D THRU F, K THRU M & P		71425	KIT, HOUSING, MAIN, LH, CNTL	1	
4	A THRU G	G	0 THRU 4,A THRU C, G THRU J & N		72189	KIT,HOUSING MAIN,RH,CHARGED	1	
		K	0 THRU 4,A THRU C, G THRU J & N		72188	KIT,HOUSING MAIN,LH,CHARGED	1	
		J	0 THRU 4,A THRU C, G THRU J & N		71821	KIT,HOUSING MAIN,RH,DISC	1	
		M	0 THRU 4,A THRU C, G THRU J & N		71822	KIT,HOUSING MAIN,LH,DISC	1	
1,3,5,6,7	K THRU T	G,H,N	0 THRU 4,A THRU C, G THRU J & N		71418	KIT, HOUSING, MAIN, RH, CHRG	1	5,167
			5 THRU 9,D THRU F, K THRU M & P		71419	KIT, HOUSING,MAIN,RH,CHRG, CNTL	1	5,167
		J	0 THRU 4,A THRU C, G THRU J & N		71416	KIT, HOUSING, MAIN, RH	1	5,167
			5 THRU 9,D THRU F, K THRU M & P		71417	KIT, HOUSING, MAIN, RH, CNTL	1	5,167
		K,L,P	0 THRU 4,A THRU C, G THRU J & N		71422	KIT, HOUSING, MAIN, LH, CHRG	1	5,167
			5 THRU 9,D THRU F, K THRU M & P		71423	KIT, HOUSING,MAIN,LH,CHRG, CNTL	1	5,167
		M	0 THRU 4,A THRU C, G THRU J & N		71426	KIT,HOUSING, MAIN, LH	1	5,167
			5 THRU 9,D THRU F, K THRU M & P		71427	KIT, HOUSING, MAIN, LH, CNTL	1	5,167



ITEMS NOT SHOWN:
 13 SEALANT
 14 OIL, 20W50, 70.3 OZ
 200 SEAL KIT

SIDE COVER KITS (INCLUDES BUSHINGS)

CHAR 5	CHAR3	CHAR 7	CHAR9	ITEM	COMPONENT	DESCRIPTION	QTY
A THRU G	G,H, J,N	3,5, 6,7	0-4,A-C,G-J & N	2	71571	KIT, COVER, SIDE, RH, CNTL	1
		4	5-9,D-F,K-M & P		71572	KIT, COVER, SIDE, RH	1
		4	0-4,A-C,G-J & N		72226	KIT, COVER, SIDE, RH, CNTL	1
	K,L, M,P	3,5, 6,7	0-4,A-C,G-J & N		71573	KIT, COVER, SIDE, LH, CNTL	1
		4	5-9,D-F,K-M & P		71574	KIT, COVER, SIDE, LH	1
		4	0-4,A-C,G-J & N		72227	KIT, COVER, SIDE, LH, CNTL	1
K THRU T	G,H, J,N	3,5, 6,7	0-4,A-C,G-J & N		71575	KIT, COVER, SIDE, RH, CNTL	1
		4	5-9,D-F,K-M & P		71576	KIT, COVER, SIDE, RH	1
	K,L, M,P	3,5, 6,7	0-4,A-C,G-J & N		71577	KIT, COVER, SIDE, LH, CNTL	1
		4	5-9,D-F,K-M & P		71578	KIT, COVER, SIDE, LH	1

SIDE COVER AND GEAR

CHAR 7	CHAR 2	CHAR 3	ITEM #	COMPONENT	DESCRIPTION	QTY
1, 2	H, K	G,H,J,N	2, 82	71541	KIT, COVER, SIDE, RH PM	1
		K,L,M,P		71543	KIT, SIDE COVER LH, PM GEAR	1
	J, L, M	G,H,J,N		71542	KIT, SIDE COVER RH, CUT STEEL GEAR	1
		K,L,M,P		71544	KIT, COVER, SIDE LH STEEL	1

FILTER GUARD

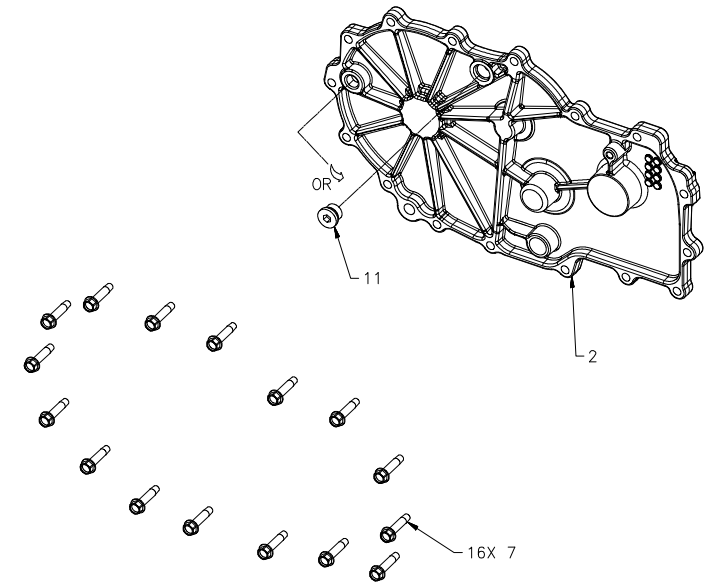
CHAR3	ITEM	COMPONENT	DESCRIPTION	QTY
G,H,J,N	106	53655	GUARD, FILTER, RH	1
K,L,M,P		53644	GUARD, FILTER, LH	1

PLUGS

CHAR5	ITEM	COMPONENT	DESCRIPTION	QTY
K THRU T	5	9005110-5600	PLUG 9/16-18 (METAL)	2
	167	9005110-4400	PLUG, 7/16-20 STR THREAD SOCKET HEAD	1

COMMON PARTS

ITEM	COMPONENT	DESCRIPTION	QTY
7	53246	HFCS 1/4-20 X 1.125"	16
11	9005110-5600	PLUG 9/16-18 (METAL)	1
13	50928	SEALANT	1
14	52114	OIL, 20W50	70.30Z
105	50752	HFCS 1/4-20 X .75	3
200	71410	KIT, SEAL	1



ZT-2800 & ZT-3100 SERVICE SCHEMATIC

DUE TO PART OBSOLETION, THE
FOLLOWING MODELS REQUIRE UNIT
REPLACEMENT WHEN ITEMS #
64,100,101,104,201,208
REQUIRE SERVICE:

OLD MODEL NO.	NEW MODEL NO.
SUPERSEDED TO	
ZH-GCEE-1B8B-1BXX	ZH-GCEE-3B8B-1BXX
ZH-KCEE-1B8C-1BXX	ZH-KCEE-3B8C-1BXX
ZH-JCEE-1B8B-1BXX	ZH-JCEE-3B8B-1BXX
ZH-MCEE-1B8C-1BXX	ZH-MCEE-3B8C-1BXX
ZJ-GMEE-1ELB-1FLX	71728
ZJ-KMEE-1ELC-1FLX	71729
ZJ-GCEF-1KKB-1EXX	ZJ-GCEF-3KKB-1EXX
ZJ-KCEF-1KKC-1EXX	ZJ-KCEF-3KKC-1EXX
ZK-GHEE-1K5A-2LXX	ZK-GHEF-3K5A-2LLX
ZK-KHEE-1K5A-2LXX	ZK-KHEF-3K5A-2LLX
ZK-GHEE-1K5A-2LLX	ZK-GHEF-3K5A-2LLX
ZK-KHEE-1K5A-2LLX	ZK-KHEF-3K5A-2LLX
ZK-GHEE-1KKB-2LXX	ZK-GHEF-3KKB-2LLX
ZK-KHEE-1KKC-2LXX	ZK-KHEF-3KKC-2LLX
ZK-GHEF-1KKB-2LLX	ZK-GHEF-3KKB-2LLX
ZK-KHEF-1KKC-2LLX	ZK-KHEF-3KKC-2LLX
ZL-GCEE-1K5A-1LXX	ZL-GCEE-3K5A-1LXX
ZL-KCEE-1K5A-1LXX	ZL-KCEE-3K5A-1LXX
ZL-GCEE-1K5A-1EXX	ZL-GCEE-3K5A-1EXX
ZL-KCEE-1K5A-1EXX	ZL-KCEE-3K5A-1EXX
ZL-GMEE-1BEB-2FXX	ZL-GMEE-3BLB-2FXX
ZL-KMEE-1BEC-2FXX	ZL-KMEE-3BLC-2FXX
ZL-GMEE-1BLB-2FXX	ZL-GMEE-3BLB-2FXX
ZL-KMEE-1BLC-2FXX	ZL-KMEE-3BLC-2FXX
ZL-GPEE-2N5B-2LXX	ZL-GPEE-3N5B-2LXX
ZL-KPEE-2N5C-2LXX	ZL-KPEE-3N5C-2LXX
ZL-GHEF-1KKB-2LLX	ZL-GHEF-3KKB-3LLX
ZL-KHEF-1KKC-2LLX	ZL-KHEF-3KKC-3LLX
ZL-GHEF-1KKB-3LLX	ZL-GHEF-3KKB-3LLX
ZL-KHEF-1KKC-3LLX	ZL-KHEF-3KKC-3LLX
ZM-GCEE-1L8B-2TLX	ZM-GCEE-3L8B-2TLX
ZM-KCEE-1L8C-2TLX	ZM-KCEE-3L8C-3TLX

ZT-2800 & ZT-3100 SERVICE SCHEMATIC

MODEL NUMBER:

Z	
---	--

 -

*		*	*
---	--	---	---

 -

*	*		
---	---	--	--

 -

*			
---	--	--	--

 CHARACTER #:

1	2
---	---

 -

3	4	5	6
---	---	---	---

 -

7	8	9	10
---	---	---	----

 -

11	12	13	14
----	----	----	----

BRAKE CAM KIT

CHAR 7	CHAR 8	ITEM	COMPONENT	DESCRIPTION	QTY
1, 2	B, E	208	71408	KIT, BRAKE CAM	1
	K	208	71409	KIT, BRAKE CAM	1

BRAKE CAM

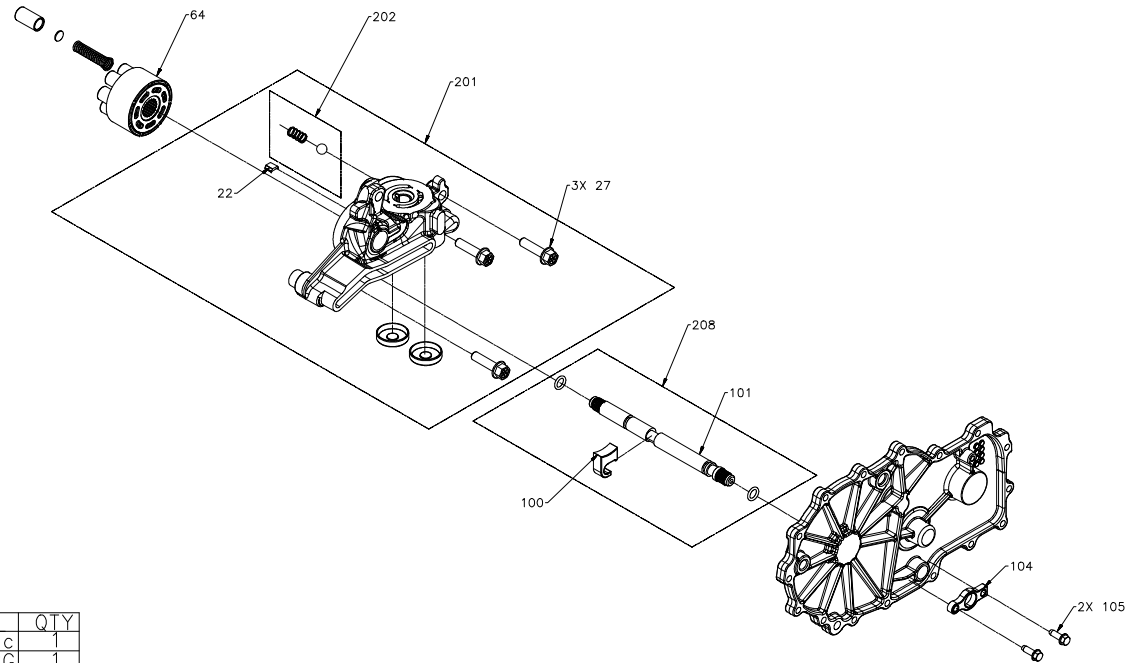
CHAR 7	CHAR 8	ITEM	COMPONENT	DESCRIPTION	QTY
1, 2	B, E	101	52244	CAM, BRAKE	1
	K	101	52245	CAM, BRAKE	1

CENTER SECTION KIT/BLOCK ASSEMBLY

CHAR 7	CHAR 3	CHAR 5	CHAR 6	ITEM	COMPONENT	DESCRIPTION	QTY
1, 2	G-M	A-R	A-R	64	70735	ASS'Y, CYLINDER BLOCK, 16cc	1
	G				71438	KIT, CENTER SECTION,RH,CHRG	1
	K		E		71440	KIT, CENTER SECTION,LH,CHRG	1
	G		F		71479	KIT, CENTER SECTION,RH,CHRG	1
	K				71480	KIT, CENTER SECTION,LH,CHRG	1
	G, K	A-R	A-R	202	71411	KIT, CHARGE	1

COMMON PARTS

CHAR 7	ITEM	COMPONENT	DESCRIPTION	QTY
1, 2	22	51448	PLATE, BYPASS	1
	27	52137	HFHCS 3/8-16X1.5 (PATCH)	3
	100	52118	PUCK, BRAKE	1
	104	52115	RETAINER, CAM STOP	1
	105	50752	HFHCS 1/4-20X.75	2



ZT-2800 & ZT-3100 SERVICE SCHEMATIC

MODEL NUMBER:

Z	
1	2

 -

3	4	5	6

 -

*	*		
7	8	9	10

 -

11	12	13	14

CHARACTER #:

1	2

 -

3	4	5	6

 -

7	8	9	10

 -

11	12	13	14

BRAKE SHAFT

CHAR 7	CHAR 8	MODEL NUMBER	ITEM #	COMPONENT	DESCRIPTION	QTY
3	J,K,L, N,P,R	ZM-GCEE-3L8B-2TLX	101	52640	BRAKE SHAFT	1
		ZM-KCEE-3L8C-3TLX				
		ZM-GEEE-3LEF-2ALX				
		ZM-KEEE-3LEG-3ALX				
		ALL OTHERS		72046	KIT, BRAKE SHAFT	1

FOR WHOLE UNIT REPLACEMENT, PLEASE USE THE FOLLOWING TABLE:

OLD MODEL NO. NEW MODEL NO.

SUPERSEDED TO	
ZM-GCEE-3L8B-2TLX	72047
ZM-KCEE-3L8C-3TLX	72048
ZM-GEEE-3LEF-2ALX	72049
ZM-KEEE-3LEG-3ALX	72050

