



# ILLUSTRATED PARTS CATALOGUE



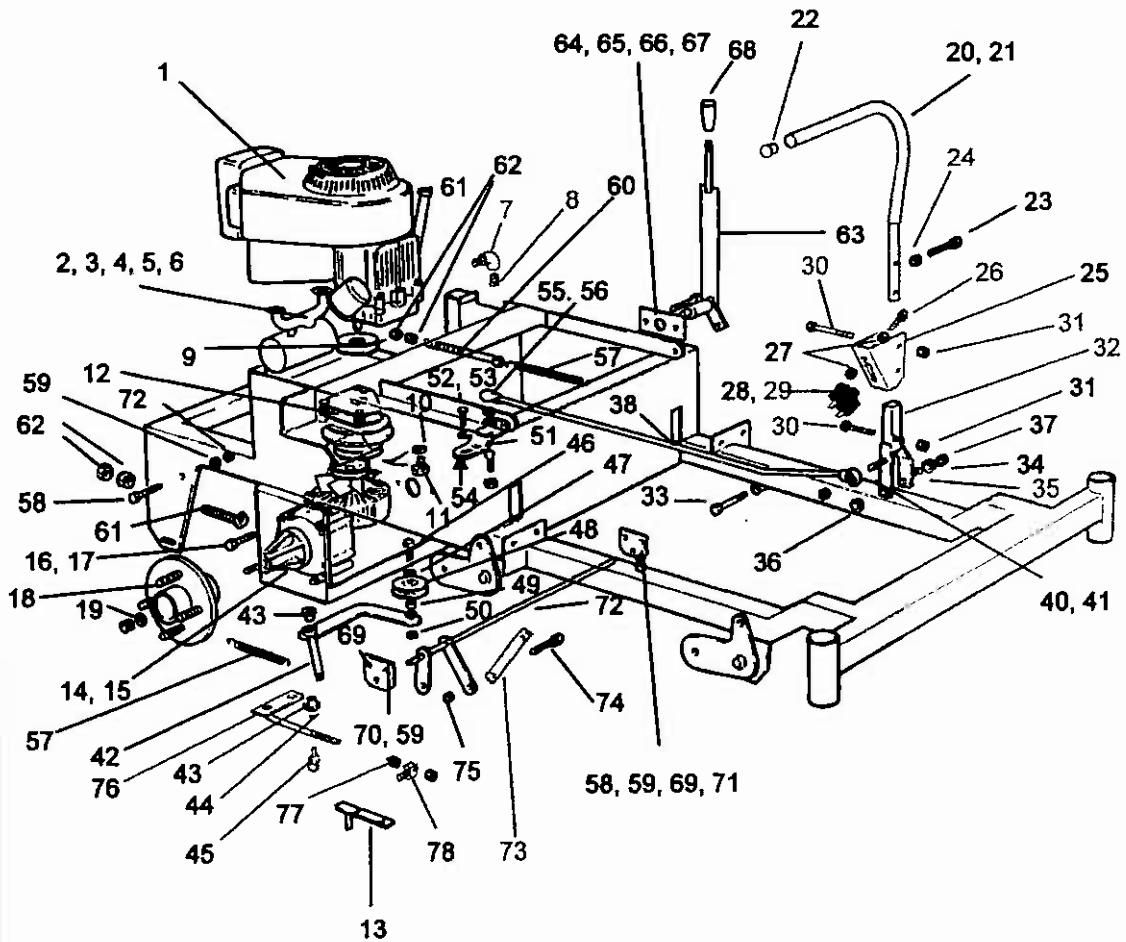
# Wildcat

**18HP, 20HP & 24HP**

**OCTOBER 2007**

# ILLUSTRATED PARTS LIST

## DRIVE INSTALLATION (Sheet 1)



DRIVE INSTALLATION (Sheet 1)

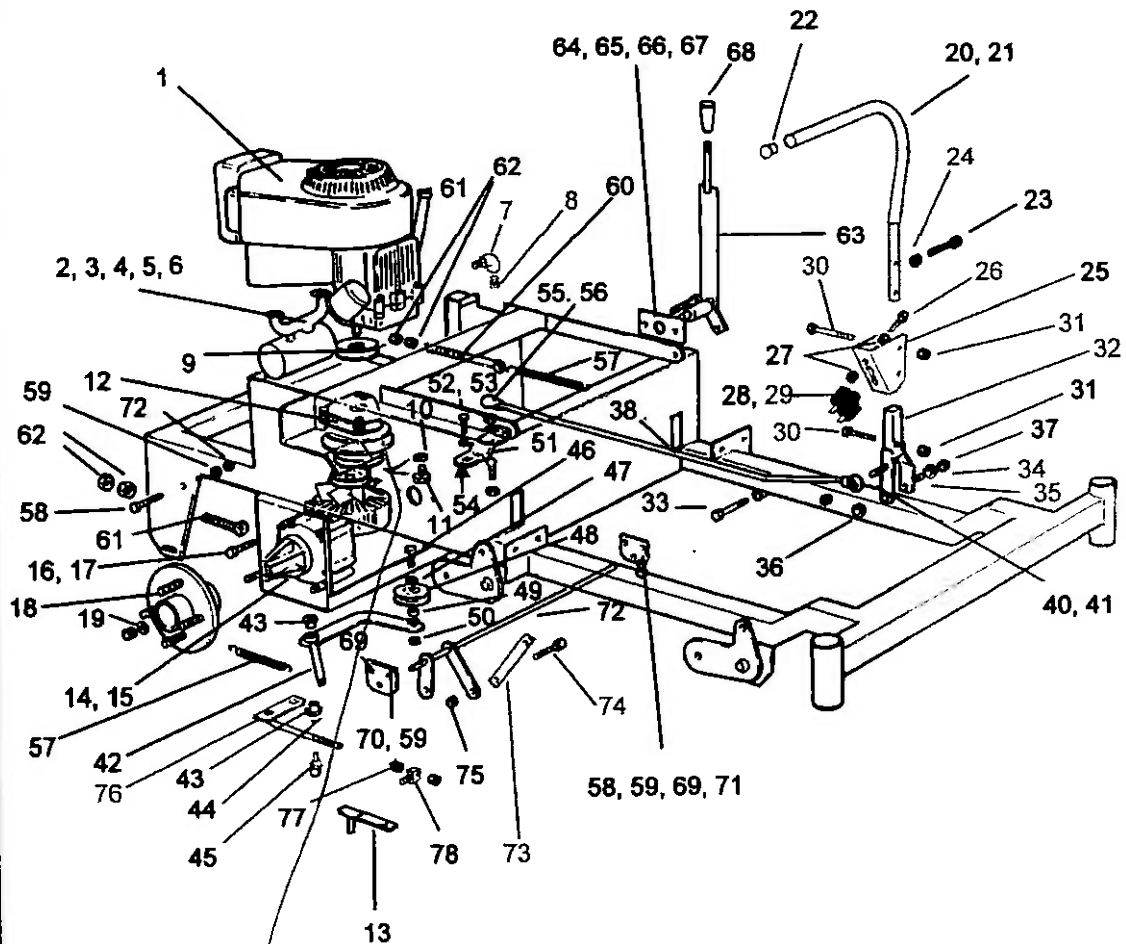
# ILLUSTRATED PARTS LIST

| Item | Description                                     | Qty | Part Number |
|------|-------------------------------------------------|-----|-------------|
| 1    | MOTOR, 18hp Briggs and Stratton                 | 1   | E18.012VEB  |
|      | 20hp HONDA                                      |     | E20 HP      |
|      | 24hp HONDA                                      |     | E24 HP      |
| 2    | MUFFLER, 18hp Briggs and Stratton Engine        | 1   | TBA         |
|      | 20hp Honda Engine                               |     | TBA         |
|      | 24hp Honda Engine                               |     | TBA         |
| 3    | MUFFLER SUPPORT                                 | 1   | ZT1231      |
| 4    | EXHAUST MANIFOLD                                | 1   | ZT1227      |
| 5    | TAIL PIPE                                       | 1   | ZT1228      |
| 6    | CLAMP, Exhaust                                  | 2   | ZT1230      |
| 7    | ELBOW                                           | 1   | 758145      |
| 8    | PLUG                                            | 1   | 758146      |
| 9    | PULLEY, Engine, 18hp & 20hp                     | 1   | ZT1199      |
|      | 24hp                                            |     | ZT1128      |
| 10   | SPRINGWASHER, 7/16"                             | 1   | 750318      |
| 11   | BOLT, 7/16" x 2"                                | 1   | ZT1244      |
| 12   | CLUTCH ASSEMBLY, 18 & 20 hp                     | 1   | 232201      |
|      | 24hp                                            |     | TBA         |
| 13   | STABILISER, Clutch, 18 & 20 HP                  | 1   | ZT1142      |
|      | 24 HP                                           |     | TBA         |
| 14   | TRANSMISSION, Hydrostatic, LH (Not Illustrated) | 1   | TBA         |
| 15   | RH (Only one side illustrated)                  | 1   | TBA         |
| 16   | BOLT, 3/8" X 1" UNC                             | 8   | 750828      |
| 17   | SPRINGWASHER, 3/8"                              | 2   | 750183      |
| 18   | HUB                                             | 2   | ZT1121      |
| 19   | WASHER                                          | 2   | ZT1164      |
|      | <b>DRIVE LEVER INSTALLATION (LH only shown)</b> | 2   |             |
| 20   | CONTROL LEVER                                   | 2   | ZT1129      |
| 21   | HANDLE GRIP                                     | 2   | ZT1213      |
| 22   | PLUG                                            | 2   | ZT1178      |
| 23   | SETSCREW, M8 X 40                               | 2   | 750121      |
| 24   | NUT, M8                                         | 2   | 750129      |
| 25   | PIVOT BRACKET                                   | 2   | ZT1130      |
| 26   | SETSCREW, M8 X 16, Zp                           | 2   | ZT750181    |
| 27   | NUT, M8, Zp                                     | 4   | 750129      |
| 28   | SWITCH KIT, Safety                              | 2   | SKT1132     |
| 29   | SCREW, Tapping                                  | 2   | 093705      |
| 30   | BOLT, M10 X 50, HT                              | 4   | 750170      |
| 31   | NUT, Nyloc, M10 ZP                              | 4   | 750127      |
| 32   | YOKE, Control Lever                             | 2   | ZT1073      |
| 33   | BOLT, M10 X 100, ZP                             | 2   | ZT1196      |
| 34   | WASHER, Flat, 3/8" X 7/8"                       | 4   | ZT1196      |
| 35   | SPRING, Lever                                   | 2   | 850119      |
| 36   | WASHER, Flat, 10 X 21 ZP                        | 2   | ZT750153    |
| 37   | NUT, Nyloc, M10 ZP                              | 2   | 750127      |
| 38   | LINK, LH                                        | 1   | ZT1202      |
| 39   | LINK, RH (Not Illustrated)                      | 1   | ZT1201      |
| 40   | ROD END                                         | 4   | AM020       |



# ILLUSTRATED PARTS LIST

## DRIVE INSTALLATION (Sheet 2)



Trans belt  
P/N 2T1098



# ILLUSTRATED PARTS LIST

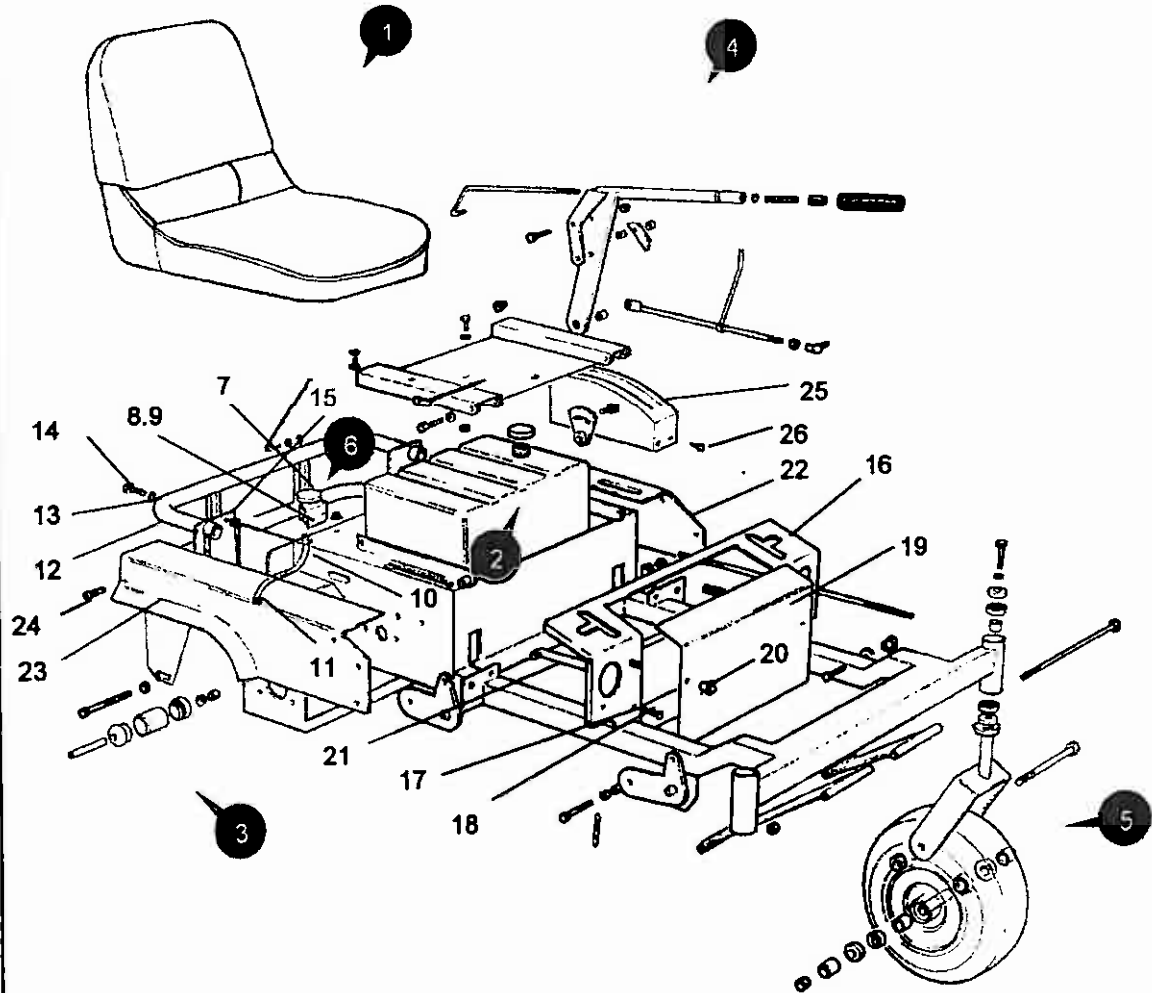
## DRIVE INSTALLATION (Sheet 2)

|    |                                  |   |              |
|----|----------------------------------|---|--------------|
| 41 | NUT, Hex, 3/8" UNF               | 4 | 750131       |
| 42 | ARM, Transmission Belt Tensioner | 1 | ZT1245       |
| 43 | BUSH                             | 2 | 750242       |
| 44 | CIRCLIP, External                | 1 | 750207       |
| 45 | GREASE NIPPLE, 90°               | 1 | 750216       |
| 46 | BOLT, 3/8" X 1 1/2" UNF          | 1 | 755763       |
| 47 | WASHER, Flat, M10 X 21           | 1 | 750153       |
| 48 | PULLEY                           | 2 | PIFBB126598A |
| 49 | BUSH                             | 1 | AM275        |
| 50 | NUT, Nyloc, 3/8" UNF             | 1 | 750135       |
| 51 | LEVER, Transmission              | 1 | ZT1077       |
| 52 | BOLT                             | 1 | 750177       |
| 53 | WASHER                           | 1 | 750092       |
| 54 | WASHER, Hardened                 | 1 | 750413       |
| 55 | BOLT (RH side only)              | 1 | 750161       |
|    | BOLT (LH side only)              | 1 | 755603       |
| 56 | SPACER (RH side only)            | 1 | 752099       |
| 57 | SPRING, Tension                  | 4 | AM040        |
| 58 | BOLT, M8 X 30                    | 2 | 750119       |
| 59 | NUT, Hex, M8                     | 4 | 750129       |
| 60 | BOLT, LH Spring Tensioner        | 1 | ZT1126       |
| 61 | BOLT, RH Spring Tensioner        | 1 | ZT1127       |
| 62 | NUT, M10, ZP                     | 1 | ZT750105     |
|    | HANDBRAKE INSTALLATION           |   |              |
| 63 | LEVER, Handbrake                 | 1 | ZT1136       |
| 64 | HOUSING, Handbrake Lever Pivot   | 1 | ZT1141       |
| 65 | BUSH, Black                      | 2 | 750241       |
| 66 | COLLAR                           | 1 | 750327       |
| 67 | GRUBSCREW, 1/4" X 1/4", UNC      | 1 | 750159       |
| 68 | KNOB, Handbrake Lever            | 1 | ZT1198       |
| 69 | PLATE, Cross Shaft               | 2 | ZT1139       |
|    | Attaching parts (Not shown)      |   |              |
| 70 | BOLT, M8 X 20                    |   | 750116       |
| 71 | NUT, Nyloc, M8                   |   | 750102       |
| 72 | CROSS SHAFT                      | 1 | ZT1138       |
| 73 | LINK, Handbrake                  | 1 | ZT1137       |
| 74 | BOLT, M8 X 16                    | 2 | 502124       |
| 75 | NUT, Nyloc, M8                   | 2 | 750102       |
| 76 | HANDBRAKE LINK ARM               | 1 | ZT1140       |
| 77 | NUT, M10                         | 2 | 750105       |
| 78 | TOGGLE                           | 1 | 500196       |



# ILLUSTRATED PARTS LIST

## CHASSIS AND BODY PARTS (Sheet 1)





# ILLUSTRATED PARTS LIST

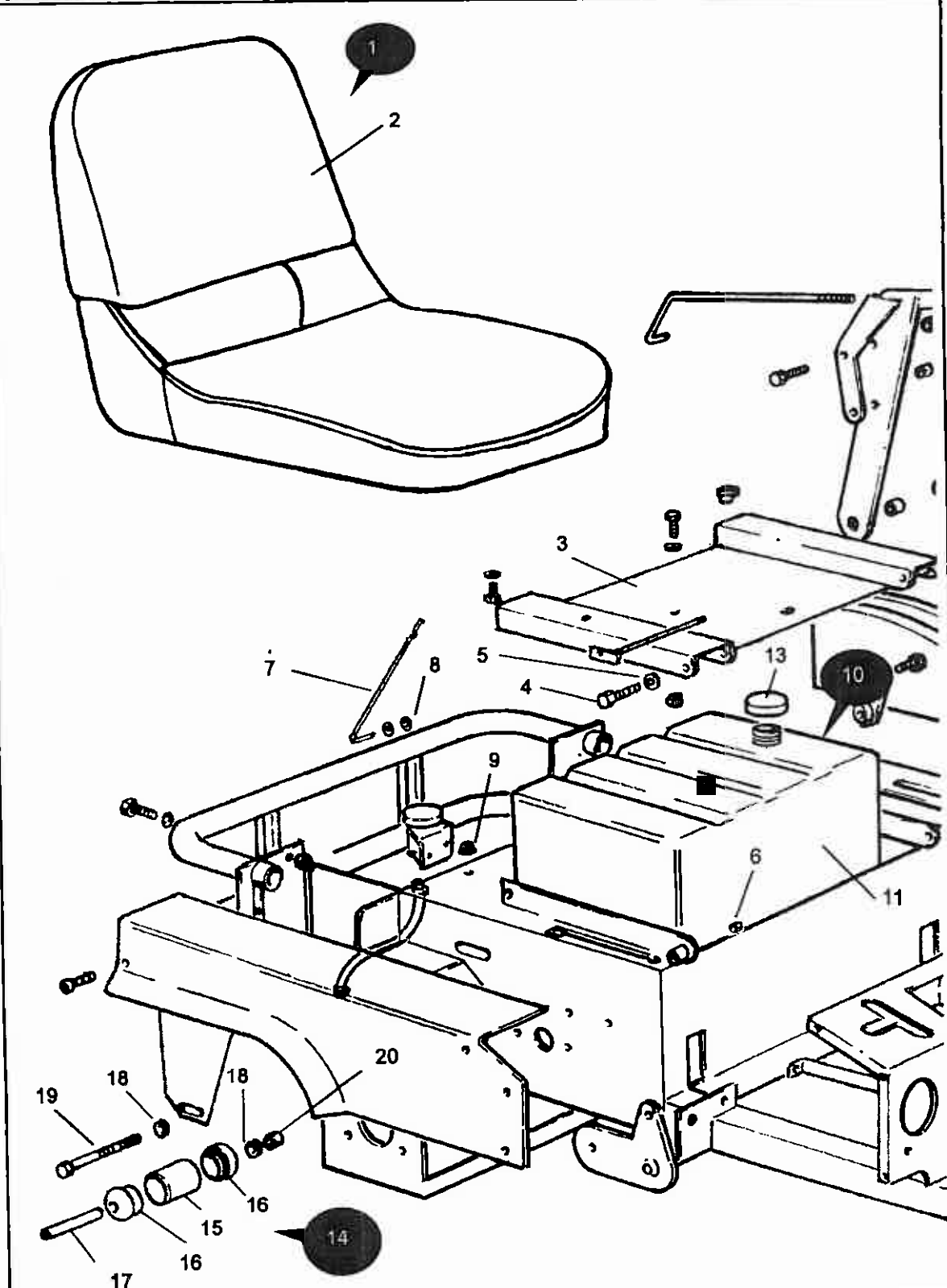
## CHASSIS AND BODY PARTS (Sheet 1)

| Item | Description                                                 | Qty | Part Number |
|------|-------------------------------------------------------------|-----|-------------|
| 1    | SEAT INSTALLATION - See Chassis and Body Parts Sheet 2      | 1   |             |
| 2    | FUEL TANK INSTALLATION - See Chassis and Body Parts Sheet 2 | 1   |             |
| 3    | ROLLER INSTALLATION - See Chassis and Body Parts Sheet 2    | 2   |             |
| 4    | DECK ADJUSTMENT PARTS - See Chassis and Body Parts Sheet 3  | 1   |             |
| 5    | WHEEL INSTALLATION - See Chassis and Body Parts Sheet 4     | 2   |             |
| 6    | EXPANSION TANK INSTALLATION (Transmission)                  | 2   |             |
| 7    | EXPANSION TANK                                              | 1   | ZT1093      |
| 8    | WASHER                                                      | 2   | 750160      |
| 9    | BOLT, M6 X 12                                               | 2   | 750111      |
| 10   | HOSE                                                        | 2   | ZT1095      |
| 11   | CLAMP, Hose                                                 | 2   | ZT1096      |
| 12   | BUMPER, Rear                                                | 1   | ZT1103      |
| 13   | WASHER, M8 X 21                                             | 4   | 750156      |
| 14   | BOLT, M8 X 16                                               | 4   | 750181      |
| 15   | NUT, Nyloc, M8                                              | 4   | 750102      |
| 16   | PANEL, Front                                                | 1   | ZT1102      |
| 17   | WASHER, M8 X 21                                             | 2   | 750156      |
| 18   | SCREW, Dome Head                                            | 2   | 502124      |
| 19   | COVER, Battery Compartment                                  | 1   | ZT1107      |
| 20   | TRI KNOB                                                    | 2   | 13148       |
| 21   | BRACKET, Battery                                            | 1   | ZT1143      |
| 22   | MUDGUARD, LH                                                | 1   | ZT1106      |
| 23   | MUDGUARD, RH                                                | 1   | ZT1105      |
| 24   | SCREW, Dome Head                                            | 12  | 502124      |
| 25   | COVER, Deck Control Lever                                   | 1   | ZT1109      |
| 26   | SCREW, Self Tapping                                         | 4   | 093705      |
| 27   | PLATE, Floor (not illustrated)                              | 1   | ZT1108      |



# ILLUSTRATED PARTS LIST

## CHASSIS AND BODY PARTS (Sheet 2)





# ILLUSTRATED PARTS LIST

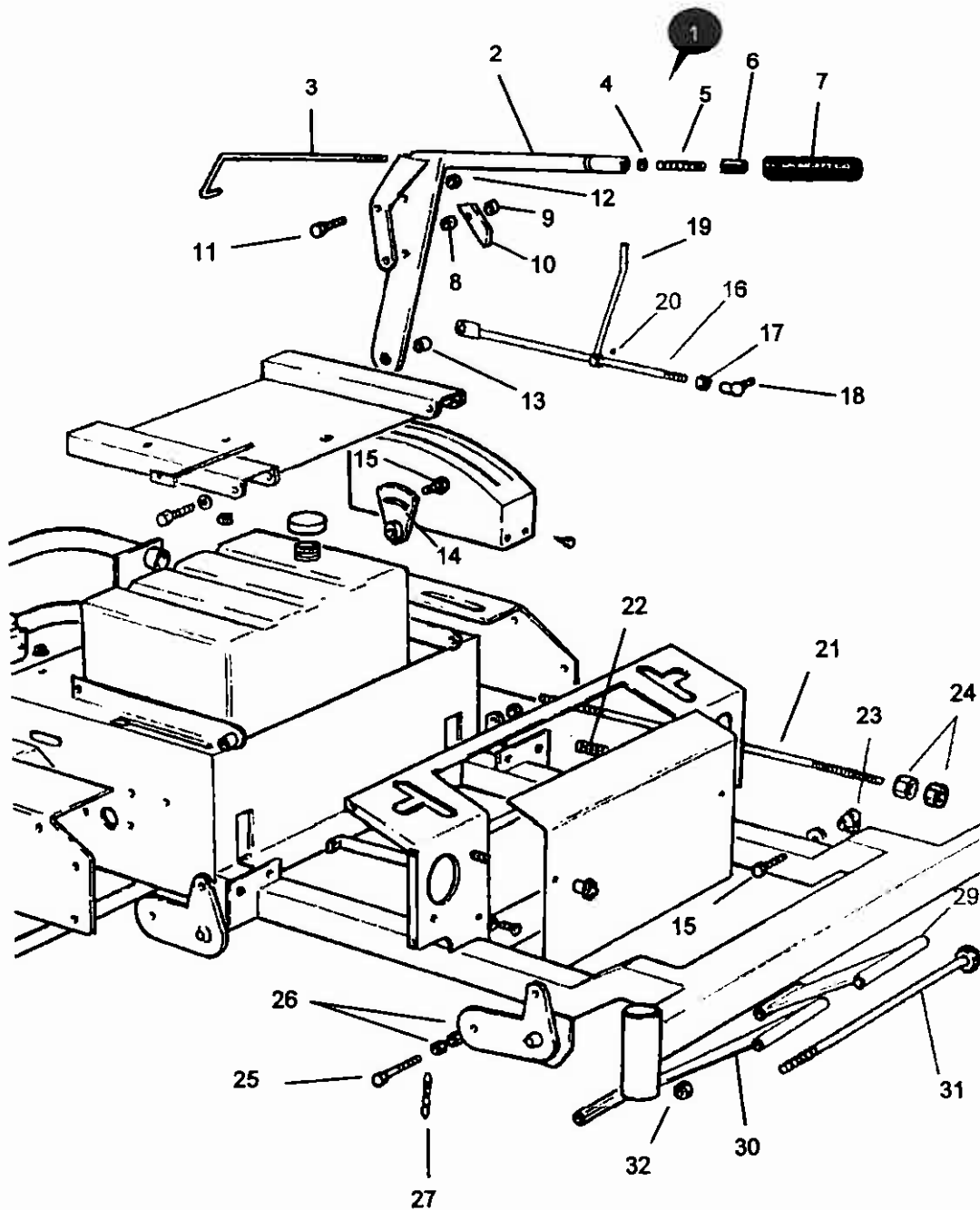
## CHASSIS AND BODY PARTS (Sheet 2)

| Item      | Description                                    | Qty      | Part Number   |
|-----------|------------------------------------------------|----------|---------------|
| <b>1</b>  | <b>SEAT INSTALLATION</b>                       | <b>1</b> |               |
| 2         | SEAT                                           | 1        | 450030        |
| 3         | PLATE, Seat Mounting                           | 1        | ZT1111        |
| 4         | BOLT, M8 X 55                                  | 2        | 750306        |
| 5         | WASHER, M8 X 21                                | 2        | 750156        |
| 6         | NUT, Nyloc, M8                                 | 2        | 750102        |
| 7         | STAY                                           | 1        | ZT1247        |
| 8         | WASHER, Lock, 1/4"                             | 2        | 750203        |
| 9         | BUFFER, Seat                                   | 2        | 750270        |
|           |                                                |          |               |
| <b>10</b> | <b>FUEL TANK INSTALLATION</b>                  | <b>1</b> |               |
| 11        | TANK, Fuel                                     | 1        | ZT1060        |
| 12        | BOLT, Tank Mounting (not illustrated), M8 X 16 | 4        | 750112        |
| 13        | CAP, Fuel Filler                               | 1        | CF01          |
|           |                                                |          |               |
| <b>14</b> | <b>ROLLER ASSEMBLY, Complete</b>               | <b>2</b> | <b>502285</b> |
| 15        | Tube, Roller                                   | 1        | 502095        |
| 16        | Cap                                            | 2        | 502146        |
| 17        | Shaft                                          | 1        | 502164        |
| 18        | Washer, Flat                                   | 2        | 750153        |
| 19        | Bolt, M10 X 120                                | 1        | 502143        |
| 20        | Nut, Nyloc, M10                                | 1        | 750127        |



# ILLUSTRATED PARTS LIST

## CHASSIS & BODY PARTS (Sheet 3)



# ILLUSTRATED PARTS LIST

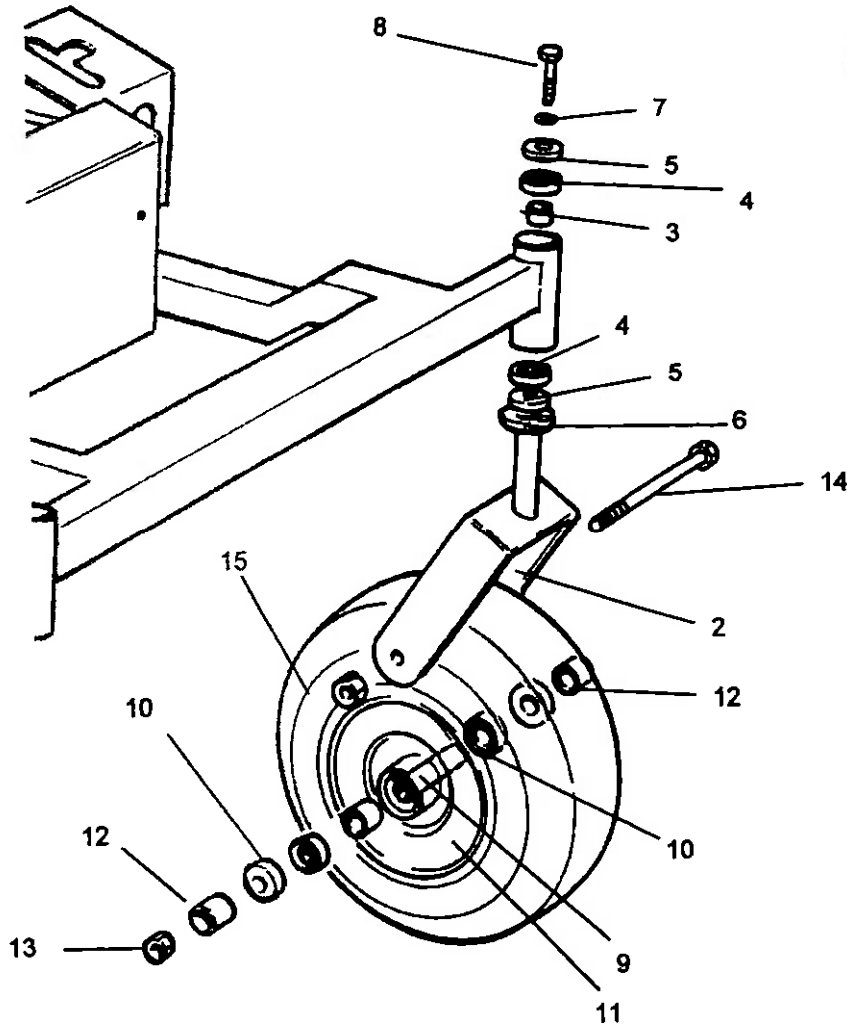
## CHASSIS AND BODY PARTS (Sheet 3)

| Item | Description                    | Qty | Part Number |
|------|--------------------------------|-----|-------------|
| 1    | <b>DECK ADJUSTMENT PARTS</b>   |     |             |
| 2    | LEVER                          | 1   | ZT1116      |
| 3    | PUSH ROD, Lift Lever           | 1   | ZT1149      |
| 4    | WASHER                         | 1   | 750156      |
| 5    | SPRING, Compression            | 1   | AM012       |
| 6    | BUTTON                         | 1   | AM013Q2     |
| 7    | GRIP                           | 1   | 500149      |
| 8    | SPACER, Long                   | 1   | ZT1184      |
| 9    | SPACER, Short                  | 1   | ZT1183      |
| 10   | PAWL, Lift Lever               | 1   | ZT1182      |
| 11   | BOLT, M6 X 45                  | 1   | ZT1172      |
| 12   | NUT, M8, Nyloc                 | 1   | 750102      |
| 13   | BUSH, Deck Lift Link           | 1   | ZT1062      |
| 14   | RATCHET PLATE                  | 1   | ZT1120      |
| 15   | BOLT, M10 X 20                 | 5   | 750182      |
| 16   | LINK, Deck Lift                | 1   | ZT1049      |
| 17   | NUT, Nyloc, M12                | 1   | 750104      |
| 18   | ROD END, 12mm                  | 1   | 500300      |
| 19   | INDICATOR, Deck Height         | 1   | ZT1050      |
| 20   | GRUBSCREW, 1/4" X 1/4"         | 1   | 750159      |
| 21   | TIE ROD, Deck Lift             | 2   | ZT1051      |
| 22   | SPRING, Deck Lift              | 2   | ZT1094      |
| 23   | TOGGLE, Deck Lift              | 4   | ZT1047      |
| 24   | NUT, Hex, M16                  | 8   | 750209      |
| 25   | BOLT, M10 X 50                 | 4   | 750170      |
| 26   | NUT, M10                       | 8   | 750130      |
| 27   | CHAIN, RF only                 | 1   | ZT1209      |
| 28   | CHAIN, LF and Rear (Not shown) | 3   | ZT1210      |
| 29   | ARM, LH                        | 1   | ZT1131      |
| 30   | ARM, RH                        | 1   | ZT1132      |
| 31   | BOLT, Deck Mount               | 1   | ZT 1110     |
| 32   | NUT, Nyloc, M16                | 1   | ZT1060      |



# ILLUSTRATED PARTS LIST

## CHASSIS & BODY PARTS (Sheet 4)

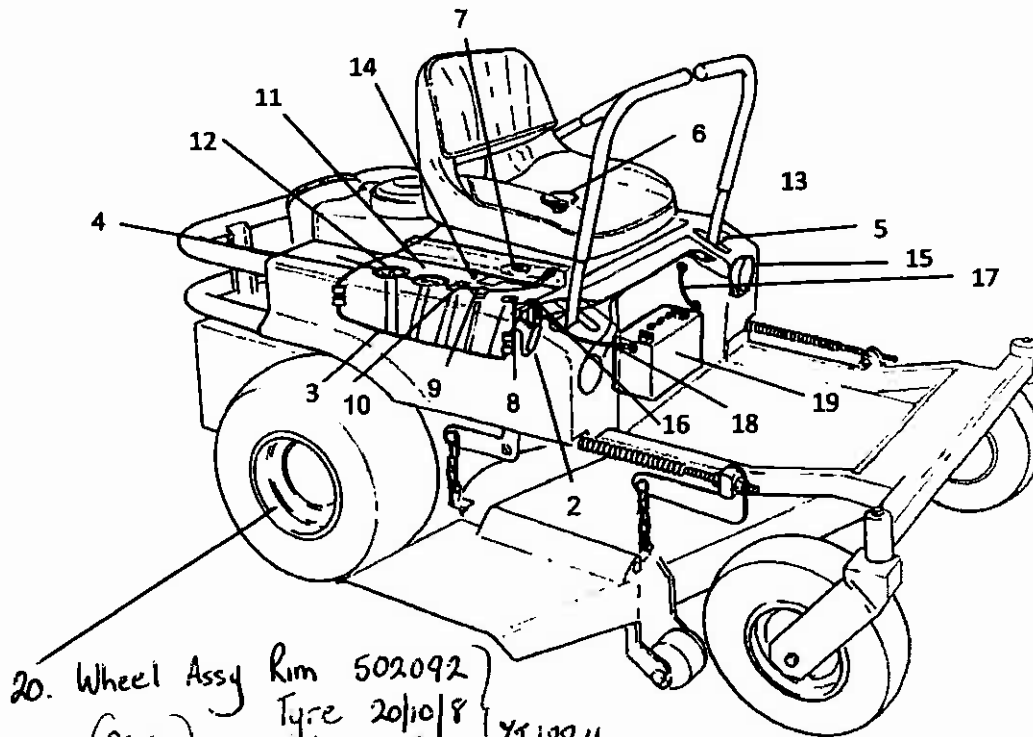


| Item | Description                           | Qty | Part Number |
|------|---------------------------------------|-----|-------------|
| 1    | WHEEL INSTALLATION (LH only shown)    | 2   |             |
| 2    | BRACKET, Castor                       | 2   | ZT1087      |
| 3    | SPACER                                | 1   | ZT1086      |
| 4    | BEARING                               | 2   | 750338      |
| 5    | SEAL                                  | 2   | 750282      |
| 6    | SEAL                                  |     | 500175      |
| 7    | WASHER                                | 1   | ZT1086      |
| 8    | BOLT, M10 X 30                        | 1   | 750266      |
| 9    | AXLE, Front Wheel                     | 1   | ZT1134      |
| 10   | BEARING                               | 2   | BB205215N   |
| 11   | WHEEL ASSEMBLY (Inc spacer and seals) | 2   | 750304      |
| 12   | SPACER                                | 1   | ZT1135      |
| 13   | NUT                                   | 1   | 750939      |
| 14   | BOLT, M12 X 180                       | 1   | ZT1162      |
| 15   | NUT, M12                              | 1   | 750130      |



# ILLUSTRATED PARTS LIST

## Electrical Components



20. Wheel Assy Rim 502092  
(24 hp) Tyre 20/10/8  
Tube 20/10/8 } ZT1224

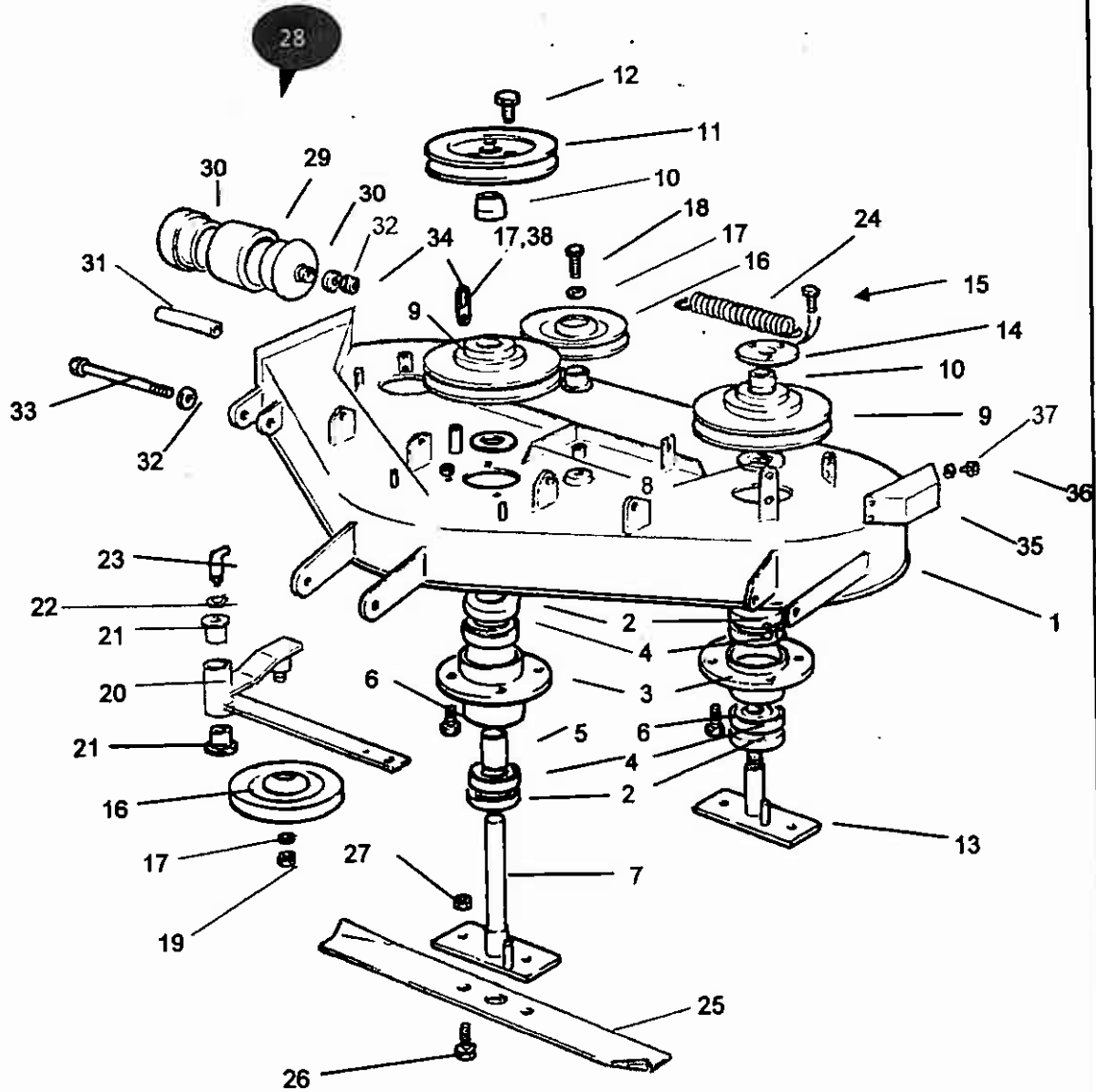
20a Wheel Assy 18+20 hp 150302 Rim 502092 Tyre 150300 Tube 150301

| Item | Description                           | Qty | Part Number |
|------|---------------------------------------|-----|-------------|
| 1    | LOOM, Control Lever (Not illustrated) | 1   | ZT1067      |
| 2    | FUSE, 25 Amp                          | 1   | 750378      |
| 3    | LOOM, Instrument                      | 1   | ZT1218      |
| 4    | LOOM, Engine                          | 1   | ZT1068      |
| 5    | SWITCH, Safety, Drive Lever           | 2   | SKIT 132    |
| 6    | SWITCH, Safety, Seat                  | 1   | AM165       |
| 7    | SENSOR, Fuel Level, Tank Unit         | 1   | Z220-003    |
| 8    | SWITCH, Ignition                      | 1   | 13125       |
| 9    | SWITCH, Blade Engage                  | 1   | 14124       |
| 10   | SWITCH, Light                         | 1   | 500148      |
| 11   | HOURMETER                             | 1   | AM211       |
| 12   | GAUGE, Fuel Level                     | 1   | 299999      |
| 13   | LEVER, Throttle                       | 1   | AM018       |
| 14   | CONTROL, Choke, c/w cable             | 1   | 750406      |
| 15   | HEADLAMP & GLOBE                      | 2   | 15109       |
| 16   | SOLENOID, Starter                     | 1   | AM159       |
| 17   | BATTERY LEAD (-)                      | 1   | ZT1070      |
| 18   | BATTERY LEAD (+)                      | 1   | ZT1215      |
| 19   | BATTERY                               | 1   | ZT1097      |



# ILLUSTRATED PARTS LIST

## DECK ASSEMBLY



# ILLUSTRATED PARTS LIST

## DECK ASSEMBLY

| Item | Description                | Qty | Part Number |
|------|----------------------------|-----|-------------|
| 1    | CHASSIS                    | 1   | ZT1205      |
| 2    | OIL SEAL                   | 6   | 755211      |
| 3    | HOUSING                    | 3   | 755198      |
| 4    | BEARING                    | 6   | BB256217N   |
| 5    | SPACER                     | 3   | 755158      |
| 6    | BOLT, 10 X 30              | 12  | 750266      |
| 7    | SPINDLE, Centre            | 1   | ZT1203      |
| 8    | SPACER, Pulley             | 3   | 755208      |
| 9    | PULLEY, 125mm              | 3   | 751205      |
| 10   | BILOC CENTRE               | 3   | 750686      |
| 11   | PULLEY, Input              | 1   | 755148      |
| 12   | BOLT, 1/4" X 1 1/2"        | 3   | ZT1207      |
| 13   | SPINDLE, Outer             | 2   | 755249      |
| 14   | RETAINER, Drilled          | 2   | 751067      |
| 15   | SCREW, 1/4" X 1"           | 6   | 750110      |
| 16   | PULLEY, Idler              | 2   | 850117      |
| 17   | WASHER, Flat, 10 X 21      | 4   | 750153      |
| 18   | BOLT, 3/8" X 1 1/4"        | 1   | 750161      |
| 19   | NUT, Nyloc, 3/8" UNF       | 1   | 750135      |
| 20   | ARM, Tension               | 1   | 755141      |
| 21   | BUSH                       | 2   | 752241      |
| 22   | CIRCLIP, External          | 1   | 750207      |
| 23   | GREASE NIPPLE, M6 X 90°    | 1   | 750216      |
| 24   | SPRING, Tension            | 1   | AM040       |
| 25   | BLADE                      | 3   | 755145      |
| 26   | 1 1/4" X 3/8" UNF          | 6   | 750161      |
| 27   | NUT, Nyloc, 3/8"           | 6   | 350135      |
| 28   | ROLLER ASSEMBLY (Complete) | 5   | 502285      |
| 29   | TUBE, Roller               | 1   | 502095      |
| 30   | CAP                        | 2   | 502146      |
| 31   | AXLE, Roller               | 1   | 502164      |
| 32   | WASHER, Flat               | 2   | 750153      |
| 33   | BOLT, M10 X 120            | 1   | 502143      |
| 34   | NUT, Nyloc, M10            | 3   | 750127      |
| 35   | GUARD, Pulley (1200 Deck)  | 2   | 755142      |
|      | GUARD, Pulley (1340 Deck)  | 2   | ZT1246      |
| 36   | WASHER, Flat               | 8   | 750160      |
| 37   | BOLT, M6 X 16              | 8   | 750112      |
| 38   | LUG, Adjustable            | 1   | ZT 1248     |

