

# Spearhead

## TWIGA PRO Reach Mower 560/650T/700T/800T 600VFR/650VFR



Edition 3.0 – October 2011  
Part No. 8999050

## PARTS MANUAL

# Spearhead TWIGA PRO

---

## Contents

Ordering Your Parts.....	3
Main Frame.....	4
Slew Post.....	6
Lift Frame.....	8
Tank Lid.....	9
Rear Panel.....	10
Stabiliser Brackets.....	11
Oil Cooler.....	12
Main Arm – 560 / 650T / 700T / 800T / 600VFR / 650VFR.....	14
Dipper Arm.....	15
Tie Bar – 560 / 650T / 700T / 800T / 600VFR / 650VFR.....	16
Head Crowd Bracket.....	17
Head Mount Bracket.....	18
Main Pivot Pin.....	19
LP Hydraulic Drive.....	20
HP Hydraulic Drive.....	21
Hydraulic Control Valve.....	22
Slew Ram / Lift Ram.....	24
Dipper Ram / Head Ram.....	25
Tele Ram / VFR Ram.....	26
Auto Reset Valve.....	27
Rotor Valve.....	28
LP Rotor Reverse Valve.....	30
HP Rotor Reverse Valve.....	31
Single Bottle Arm Float.....	32
Twin Bottle Arm Float.....	33
Autopilot.....	34
Telescopic Outer Dipper Arm - 650T / 700T / 800T.....	36
Telescopic Inner Dipper Arm - 650T / 700T / 800T.....	38
VFR Dipper Arm - 600VFR / 650VFR.....	40

# Spearhead TWIGA PRO

---

Head Float.....	42
Lift Ram Shut Off Valve.....	43
Decals.....	44
Safety Decals.....	45
Cab Guard.....	46
Axle Mount Sub Frame.....	47
Light Circuit.....	48
Gearbox.....	49
PTO.....	50
Debris Blower.....	51
Hydraulic Proportional Controls.....	52
Electronic Proportional Pro Pilot Controls.....	54
Hydraulic Proportional Pro Pilot Controls.....	56
Bracket Mounting Arms.....	58
3 Stage Auto Reset.....	59
Hose Blanking Caps.....	60
Quick release Couplings.....	60

# Spearhead TWIGA PRO

---

## Ordering Your Part's

When ordering parts please refer to your parts list to help your dealer with your order.

Part number and quantity  
Description  
Machine model number  
Serial number of the machine  
Delivery instructions (e.g. next day).

Delivery is normally via carrier direct to your dealer. Please check with your dealer for stock availability and arrangement of dispatch. Ensure you or your dealer has sufficient cover for parts requirement outside factory hours.

When ordering your seal kits please quote both codes stamped on the base of the cylinder.

## Important Note:

The information contained in this manual is correct at the time of publication. However, in the course of constant development, changes in specification are inevitable.

### Key:

(LH)	=	Left hand
(RH)	=	Right hand
(LP)	=	Low pressure hydraulics
(HP)	=	High pressure hydraulics

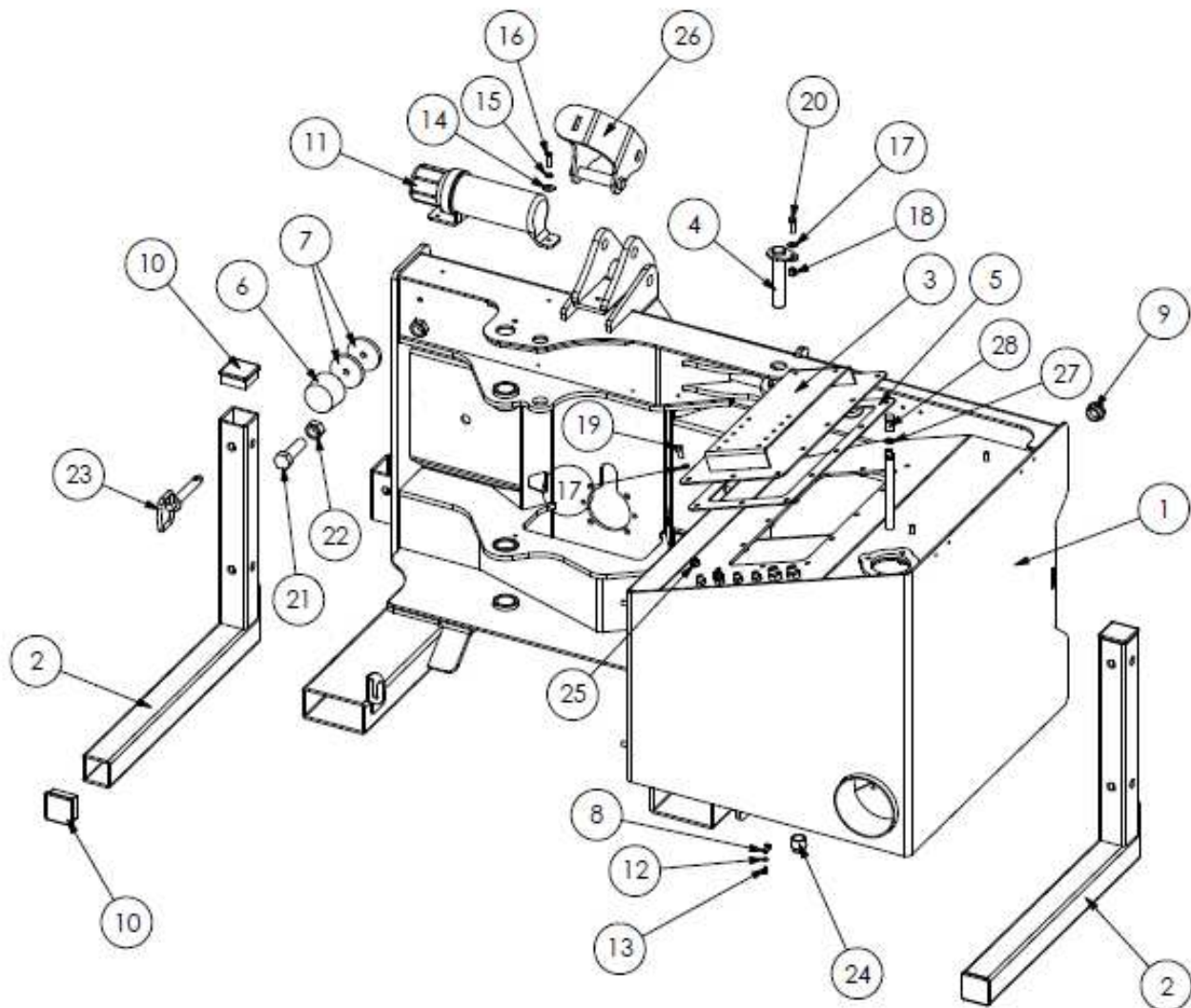
# Spearhead TWIGA PRO

LH MAIN FRAME - SI80028.00

RH MAIN FRAME - SI80028.68

LH BRACKET MOUNTED MAIN FRAME - SI80028.21

RH BRACKET MOUNTED MAIN FRAME - SI80028.III



# Spearhead TWIGA PRO

LH MAIN FRAME - SI80028.00

RH MAIN FRAME - SI80028.68

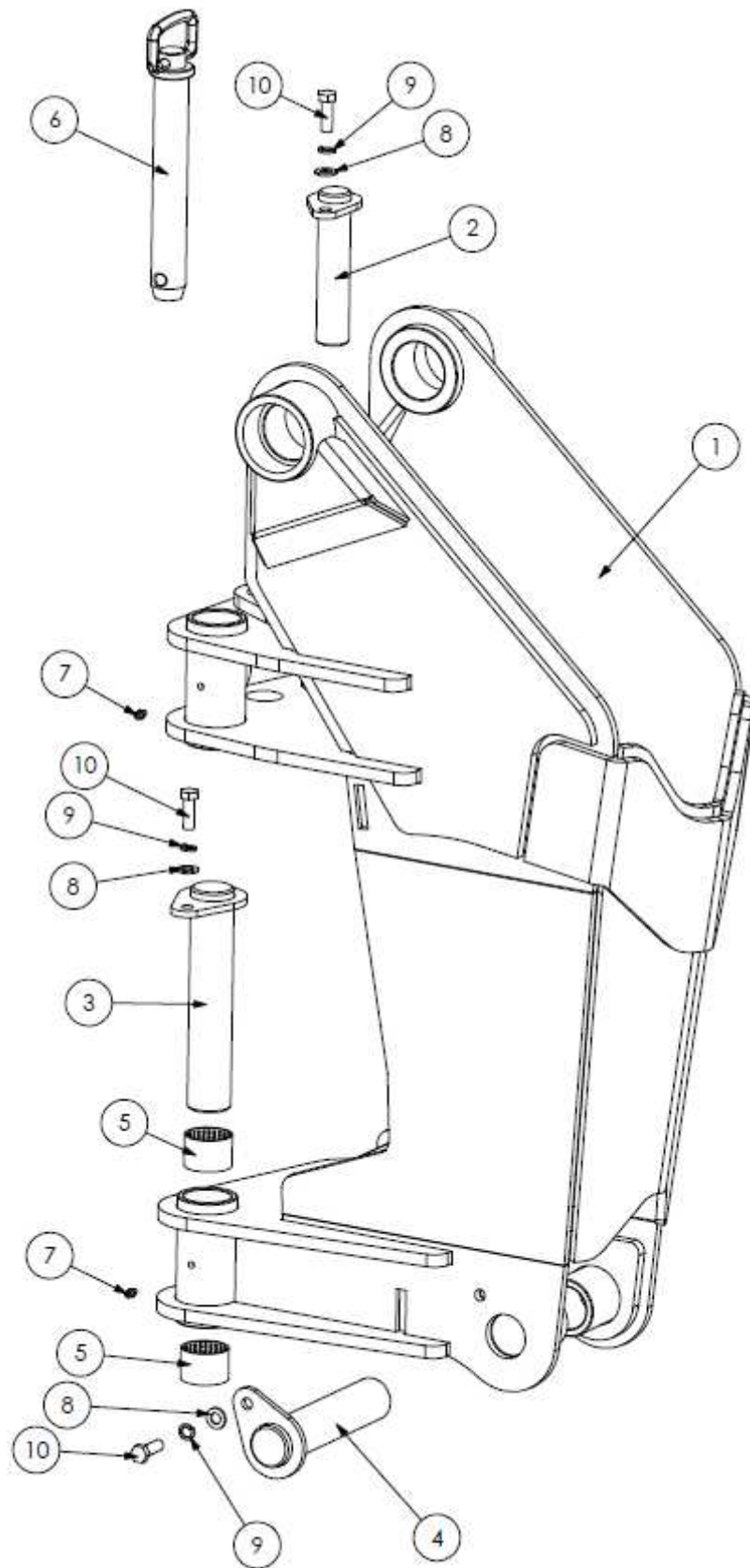
LH BRACKET MOUNTED MAIN FRAME - SI80028.21

RH BRACKET MOUNTED MAIN FRAME - SI80028.III

REF NO.	PART NO.	QTY.	DESCRIPTION
1	180700	1	LH MAIN FRAME
1	180882	1	RH MAIN FRAME
1	180080	1	LH BRACKET MOUNTED MAIN FRAME
1	180081	1	RH BRACKET MOUNTED MAIN FRAME
2	180720	2	LEG STAND
3	180705	1	TANK COVER
4	1782100	1	PEAR PIN: 30 X 132 mm
5	5771637	1	TANK COVER GASKET
6	8770634	1	RUBBER CUSHION
7	1777029	2	SPACER
8	21151.01	1	D CLIP
9	3900063	1	LEVEL GAUGE
10	45210.01	4	CAP
11	46505.01	1	DOCUMENTS FLASK
12	2771408	1	M6 FLAT WASHER
13	2770385	1	M6 X 10 BOLT
14	2770244	2	M8 REPAIR WASHER
15	2770323	2	M8 SPRING WASHER
16	2770589	2	M8 X 20 BUTTON
17	2770434	13	M10 FLAT WASHER
18	2770412	1	M10 NYLOCK
19	2770418	12	M10 X 20 BOLT
20	2770421	1	M10 X 30 BOLT
21	2770551	1	M24 X 80 BOLT
22	2770460	1	M24 FULL NUT
23	6310215	2	PIN
24	T1698	2	BUNG
25	3460104	2	¼" BLANKING CAP
26	180079	1	LH CAT II TRANSPORT BRACKET
26	180956	OPT	LH CAT III TRANSPORT BRACKET
26	180271	1	RH CAT II TRANSPORT BRACKET
26	180957	OPT	RH CAT III TRANSPORT BRACKET
27	3260070	1	¼" BONDED SEAL
28	154.021	1	BREATHER

# Spearhead TWIGA PRO

LH SLEW POST – SI80028.01  
RH SLEW POST – SI80028.69



# Spearhead TWIGA PRO

---

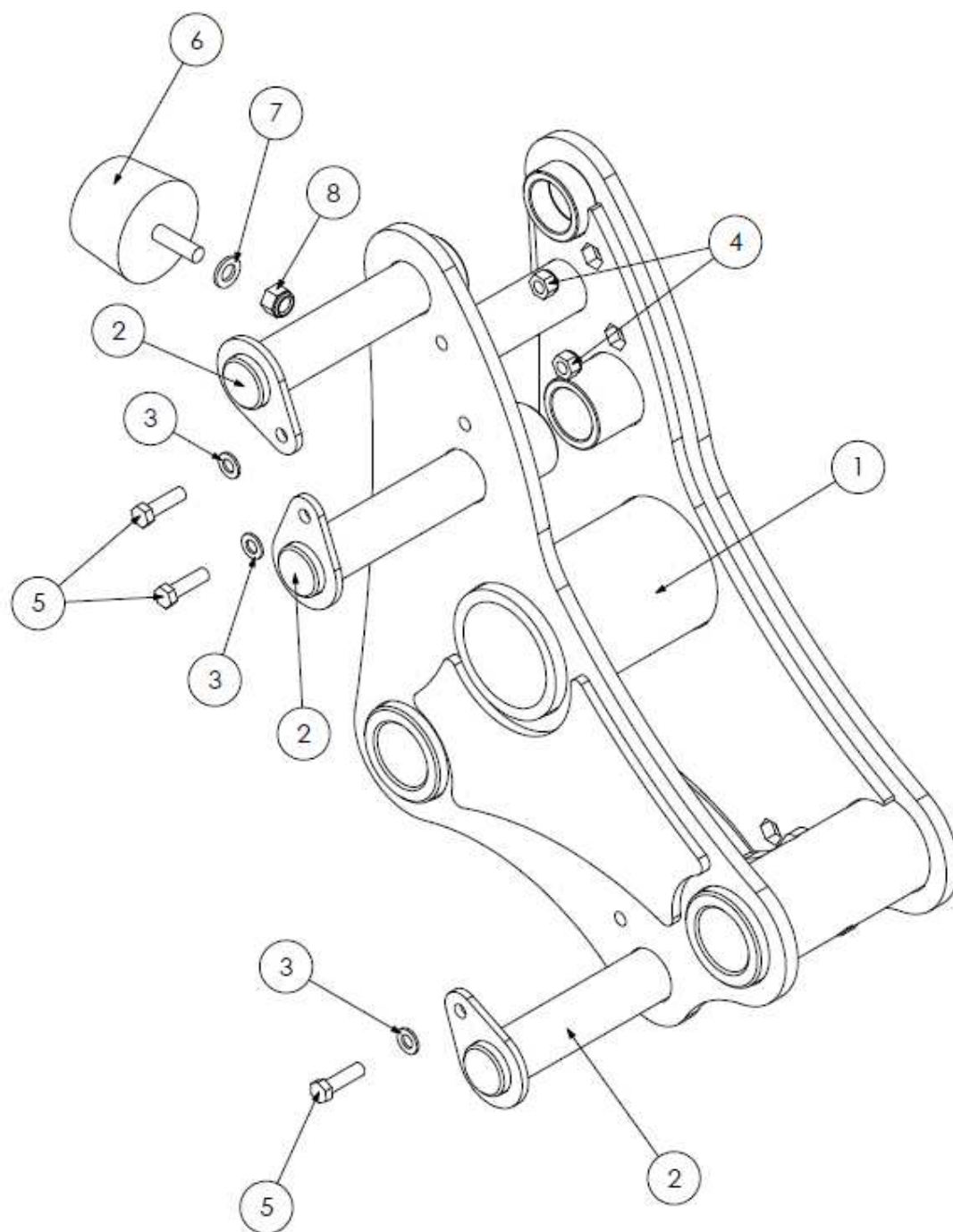
LH SLEW POST – SI80028.01  
RH SLEW POST – SI80028.69

REF NO.	PART NO.	QTY.	DESCRIPTION
1	180701	1	LH SLEW POST
1	180883	1	RH SLEW POST
2	1782100	1	PEAR PIN: 30 X 132 mm
3	1782102	2	PEAR PIN: 40 X 198 mm
4	1782104	1	PEAR PIN: 40 X 174 mm
5	4600148	4	BUSH
6	6310230	1	TRANSPORT LOCK PIN
7	2770467	2	M6 ST GREASE NIPPLE
8	2770434	4	M10 FLAT WASHER
9	2770469	4	M10 SPRING WASHER
10	2770421	4	M10 X 30 BOLT



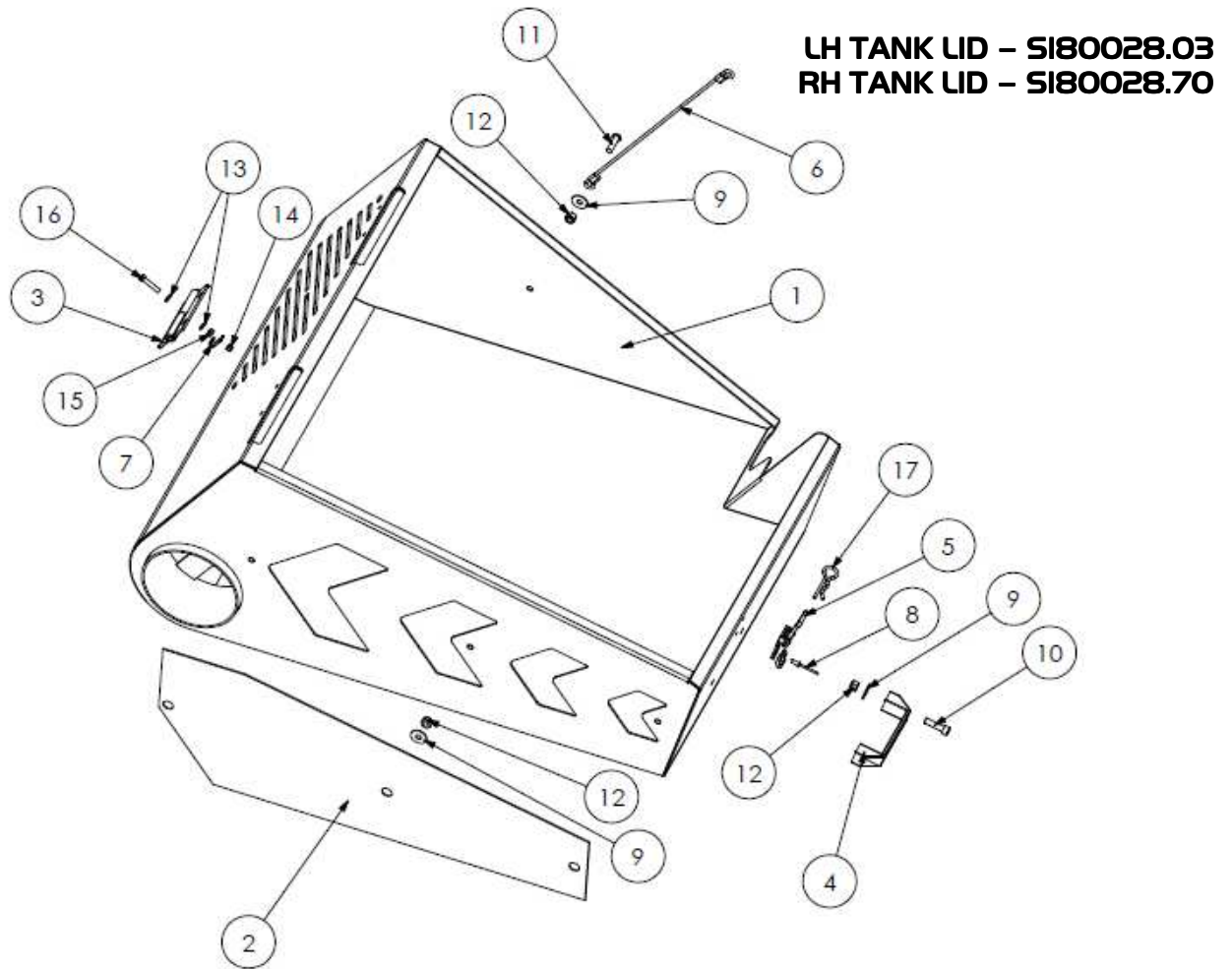
# Spearhead TWIGA PRO

## LIFT FRAME – SI80028.02



REF NO.	PART NO.	QTY	DESCRIPTION
1	180272	1	LIFT FRAME
2	1782104	3	PEAR PIN: 40 X 154mm
3	2770434	3	M10 FLAT WASHER
4	2770412	3	M10 NYLOCK
5	2770396	3	M10 X 35 BOLT
6	8770634	1	RUBBER CUSHION
7	2770436	1	M12 FLAT WASHER
8	2770417	1	M12 NYLOCK NUT

# Spearhead TWIGA PRO

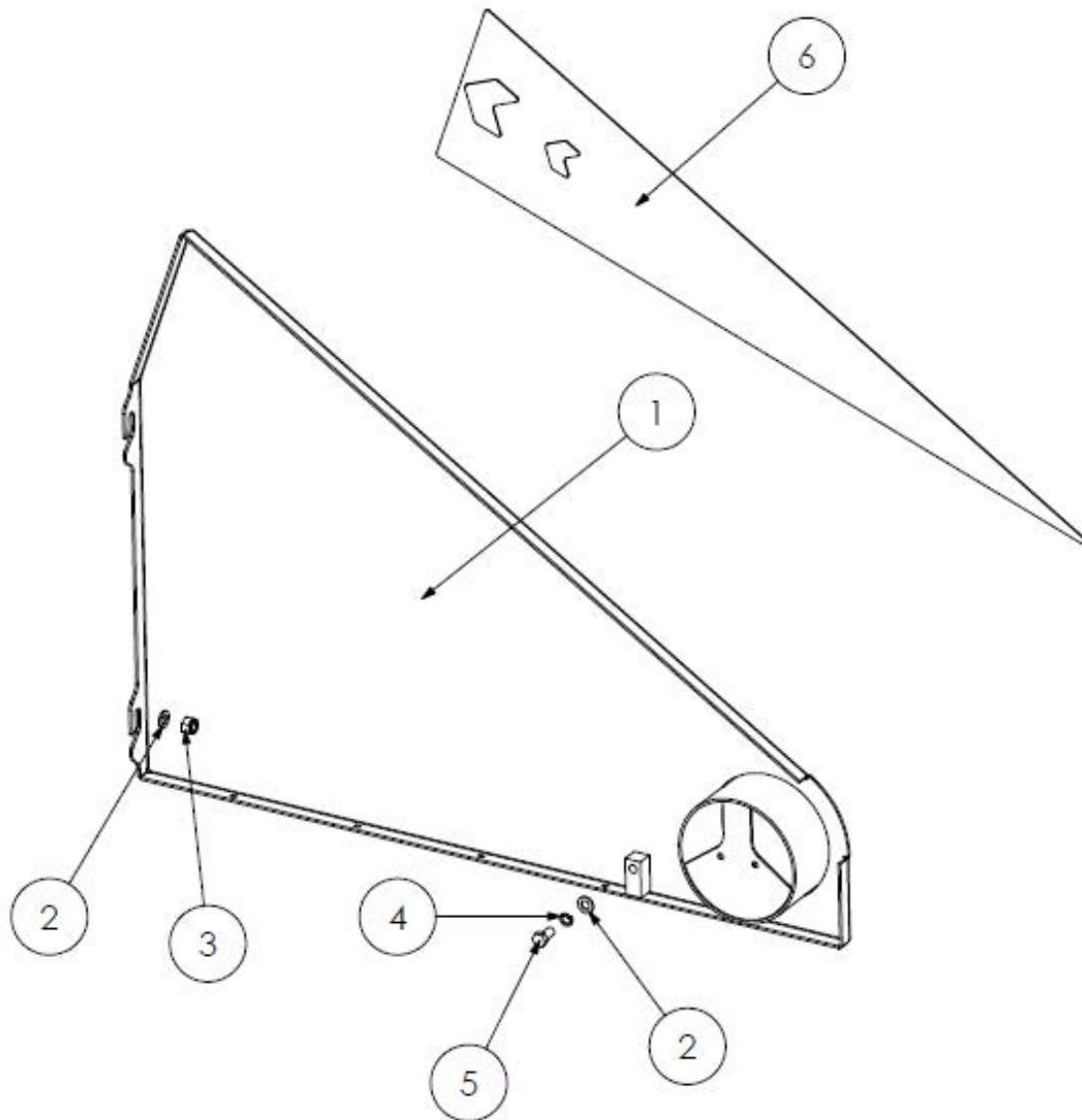


REF NO.	PART NO.	QTY.	DESCRIPTION
1	180703	1	LH TANK LID
1	180884	1	RH TANK LID
2	180717	1	TANK LID MESH
3	46065.01	2	HINGE
3	46065.02	2	HINGE
4	8777513	1	HANDLE
5	1778352	1	CLASP
6	6770939	1	WIRE ROPE
7	21151.01	2	D CLIP
8	05.963.01	2	POP RIVET
9	2770244	7	M8 REPAIR WASHER
10	2770368	2	M8 X 30 SKT CAP
11	2770589	2	M8 X 20 BUTTON
12	2770416	7	M8 NYLOCK
13	2771408	16	M6 FLAT WASHER
14	2770373	8	M6 NYLOCK
15	2770374	8	M6 FULL NUT
16	30.068.84	8	M6 X 25 BOLT
17	6310194	1	R CLIP

# Spearhead TWIGA PRO

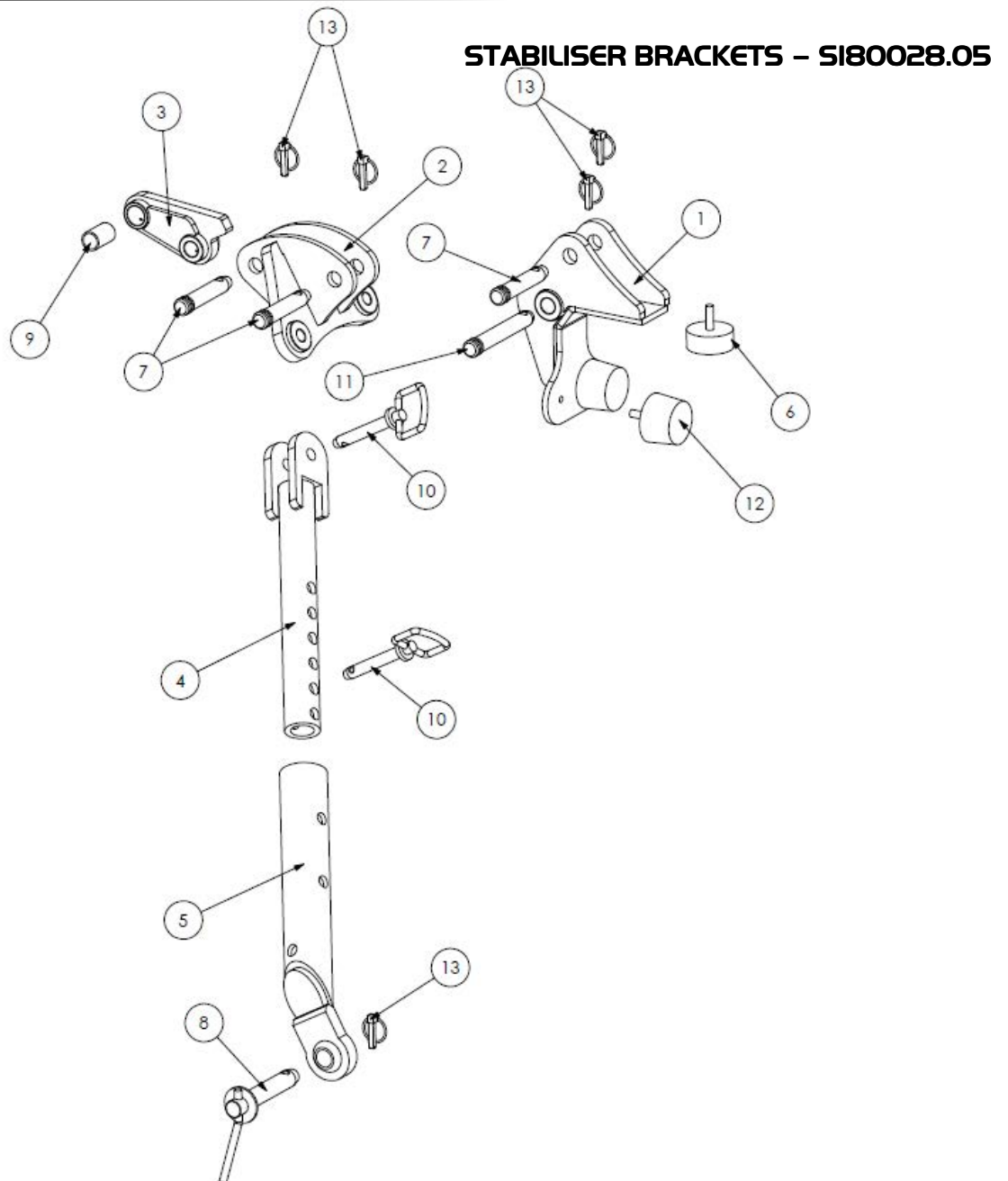
LH REAR PANEL – SI80028.04

RH REAR PANEL – SI80028.71



REF NO.	PART NO.	QTY.	DESCRIPTION
1	180704	1	LH REAR PANEL
1	180885	1	RH REAR PANEL
2	2770434	3	M10 FLAT WASHER
3	2770412	2	M10 NYLOCK
4	2770469	1	M10 SPRING WASHER
5	2770418	1	M10 X 20 BOLT
6	8770404	1	LH DECAL
6	8770405	1	RH DECAL

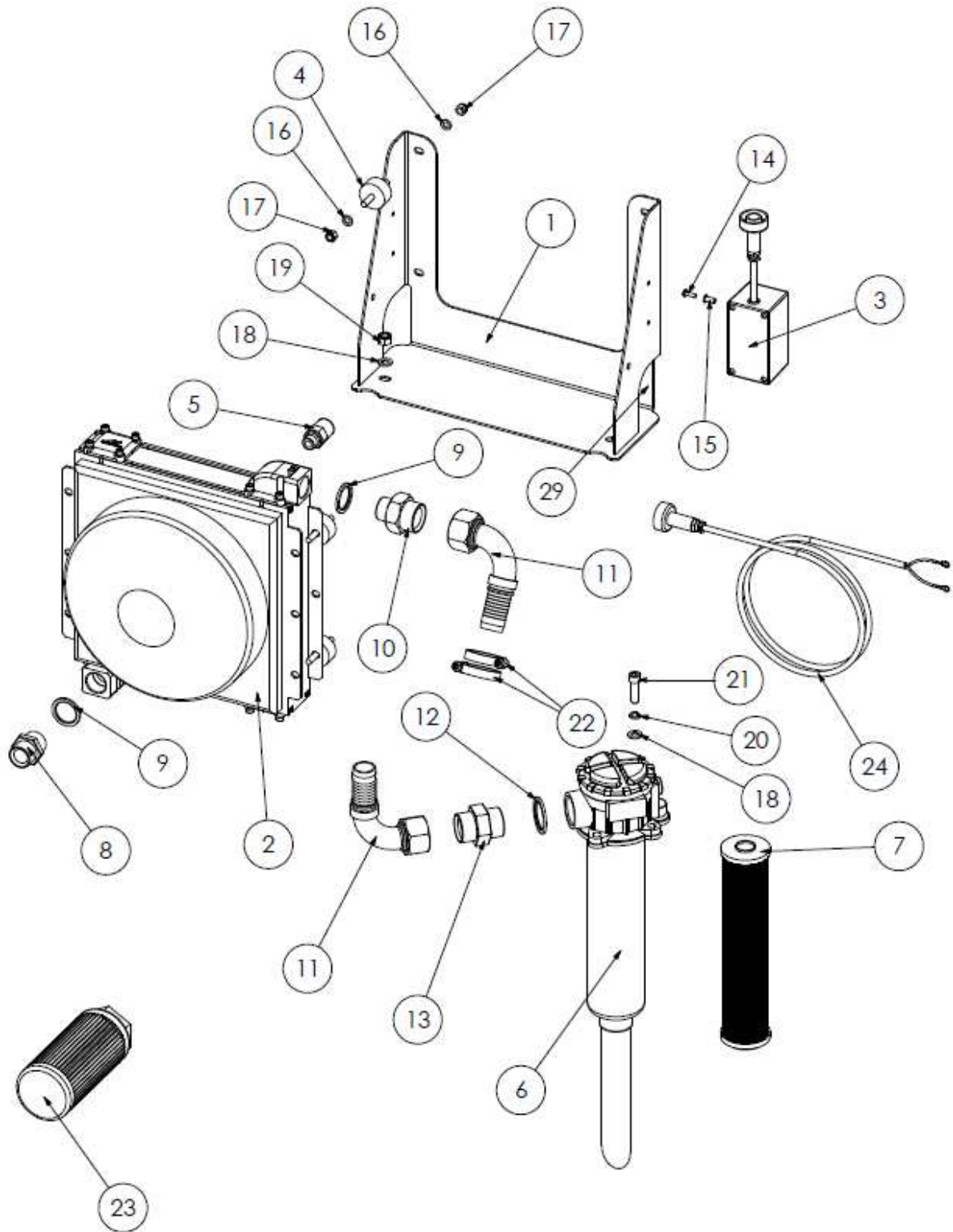
# Spearhead TWIGA PRO



REF NO.	PART NO.	QTY.	DESCRIPTION
1	180509	1	CAT II TOP LINK CUSHION BRACKET
1	180958	OPT	CAT III TOP LINK CUSHION BRACKET
2	1800289	1	STABILISER BRACKET
3	1800290	1	STABILISER TONGUE
4	1777532	2	INNER STABILISER
5	1777533A	2	OUTER STABILISER
6	45987.01	1	RUBBER CUSHION
7	6310203	3	TOP LINK PIN
8	6310208	4	LOWER LINK PIN
9	6310214	1	CONVERSION BUSH
10	6310215	4	PIN
11	6310235	1	TOP LINK PIN
12	8770634	2	RUBBER CUSHION
13	00.372.01	8	LYNCH PIN

# Spearhead TWIGA PRO

OIL COOLER – SI80028.06



# Spearhead TWIGA PRO

---

OIL COOLER – S180028.06

REF NO.	PART NO.	QTY.	DESCRIPTION
1	180706	1	OIL COOLER BRACKET
2	3151084	1	OIL COOLER
3	8770711	1	CONTROL BOX
4	8770603	4	RUBBER MOUNT
5	47313.03	1	THERMOSTAT
6	3900045	1	RETURNS FILTER
7	3900079	-	FILTER ELEMENT
8	3360092	1	1" M-M ADAPTOR
9	3260074	2	1" BONDED SEAL
10	3360078	1	1" X 1 ¼" M-M
11	3761004	2	1 ¼" FM SWEPT HOSE TAIL
12	3260075	1	1 ¼" BONDED SEAL
13	3360095	1	1 ¼" M-M
14	2770580	2	M5 X 15 SCREW
15	2770207	2	M5 RIVNUT
16	2770432	8	M8 FLAT WASHER
17	2770416	8	M8 NYLOCK
18	2770434	6	M10 FLAT WASHER
19	2770412	2	M10 NYLOCK
20	2770469	4	M10 SPRING WASHER
21	30.072.27	4	M10 X 35 SKT CAP
22	3700188	4	JUBILEE CLIP
23	8401047	1	SUCTION FILTER
24	8770713	1	OIL COOLER POWER LEAD

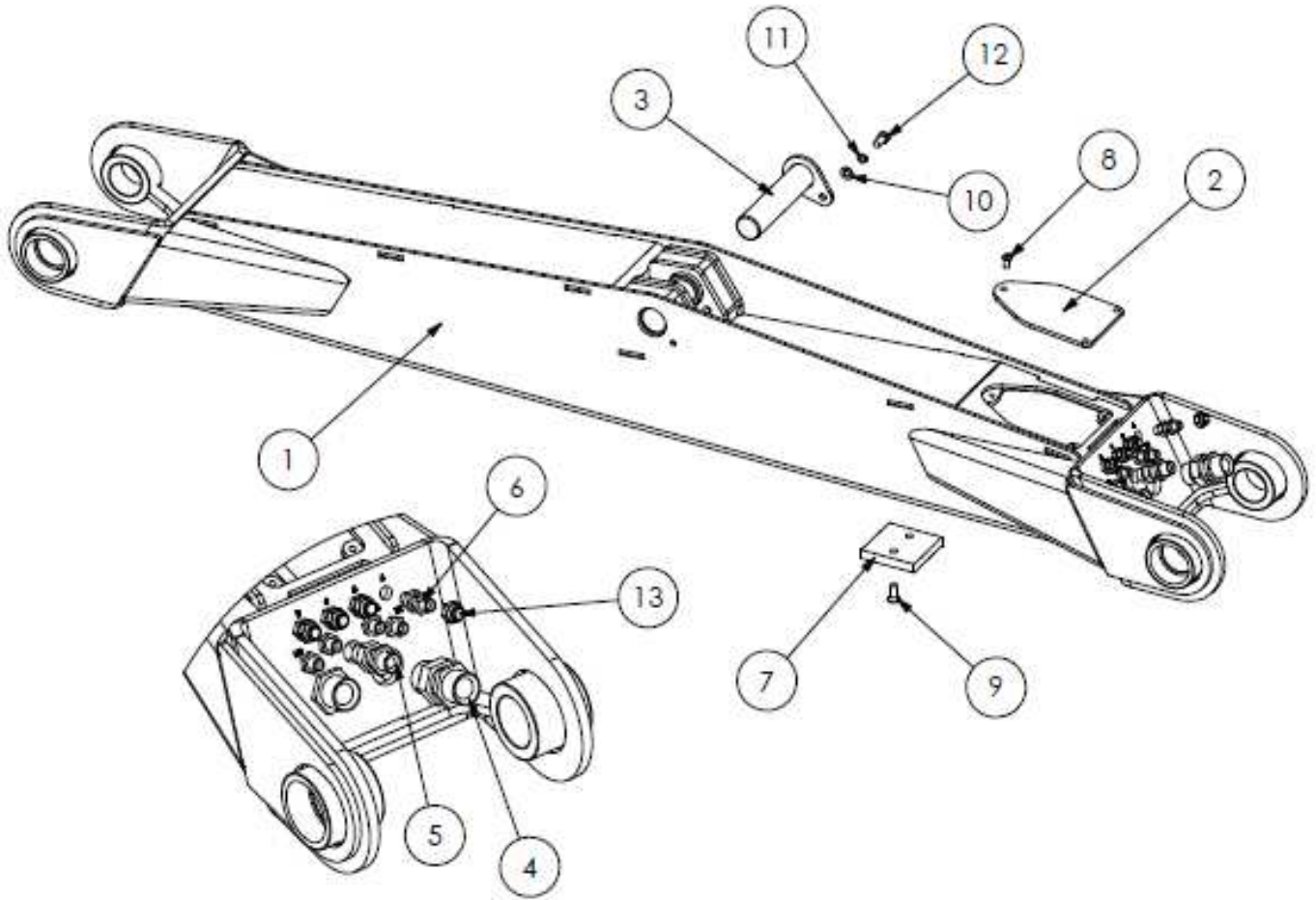


# Spearhead TWIGA PRO

560/650T/700T/600VFR MAIN ARM – SI80028.07

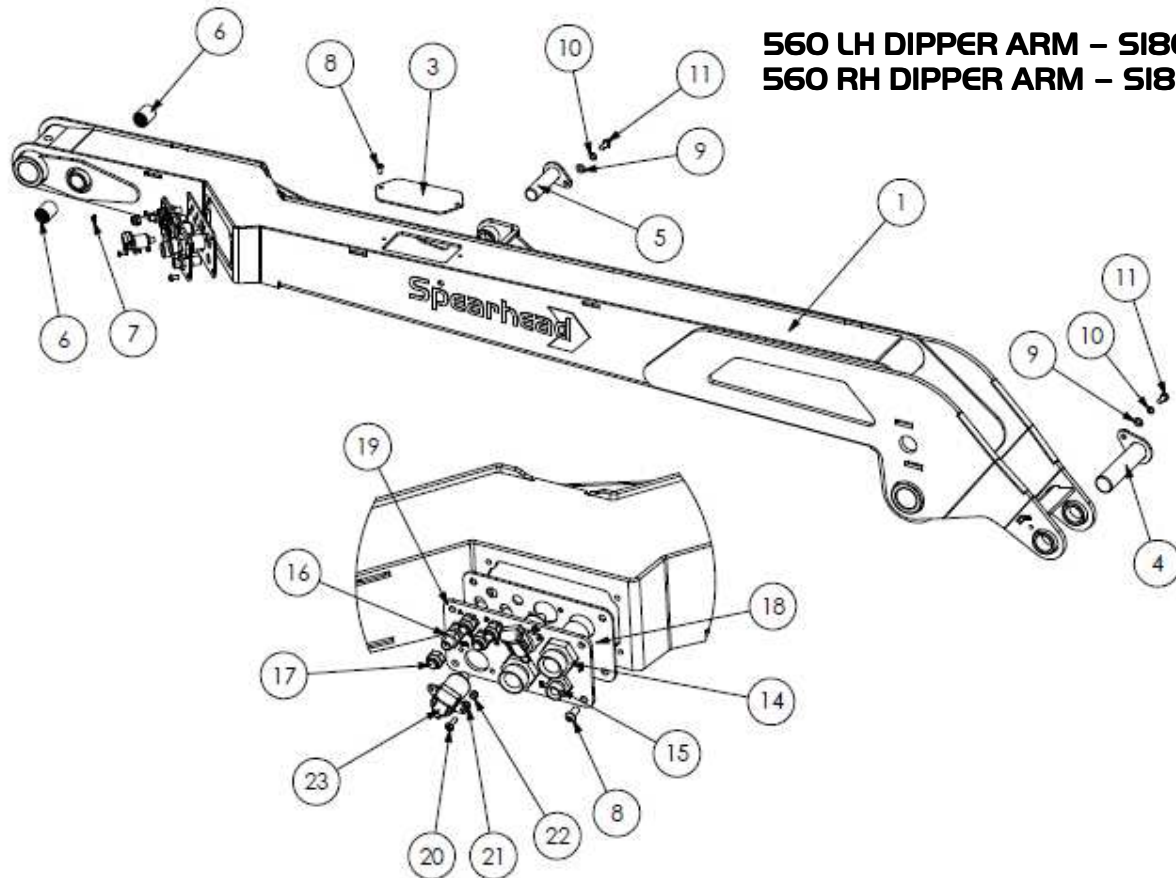
650VFR MAIN ARM – SI80028.109

800T MAIN ARM - SI80028.45



REF NO.	PART NO.	QTY.	DESCRIPTION
1	180296	1	MAIN ARM – 560/650T/700T/600VFR
1	180297	1	MAIN ARM – 650VFR
1	180721	1	MAIN ARM - 800T
2	180049	1	INSPECTION COVER
2	180179	1	INSPECTION COVER - 800T
3	1782104	1	PEAR PIN: 40 X 174 mm
3	1782122	1	PEAR PIN: 40 X 214 mm - 800T
4	3460115	2	1" BULKHEAD
5	3700187	1	½" BULKHEAD
6	3460122	8	¼" BULKHEAD
7	8770637	1	NYLON PAD
8	2770370	3	M8 X 15 BUTTON
9	2770554	2	M10 X 25 SKT CSK SCREW
10	2770434	1	M10 FLAT WASHER
11	2770469	1	M10 SPRING WASHER
12	2770418	1	M10 X 20 BOLT
13	3460104	6	¼" BLANKING CAP

# Spearhead TWIGA PRO



**560 LH DIPPER ARM – SI80028.08**  
**560 RH DIPPER ARM – SI80028.72**

REF NO.	PART NO.	QTY.	DESCRIPTION
1	180274	1	LH DIPPER ARM
1	180276	1	RH DIPPER ARM
3	180715	1	TOP ACCESS PLATE
4	1782120	1	PEAR PIN: 40 X 164 mm
5	1782106	1	PEAR PIN: 30 X 106 mm
6	42654.08	2	BUSH
7	2770639	1	M6 EXTENDED GREASE NIPPLE
8	2770370	6	M8 X 15 BUTTON
9	2770434	2	M10 FLAT WASHER
10	2770469	2	M10 SPRING WASHER
11	2770418	2	M10 X 20 BOLT
13	2770412	1	M10 NYLOCK
14	3460115	2	1" BULKHEAD
15	3700187	1	½" BULKHEAD
16	3460122	4	¼" BULKHEAD
17	3460104	4	¼" BLANKING CAP
18	180275	1	BULKHEAD PLATE
19	180278	1	LH BULKHEAD RETAINING PLATE
19	180279	1	RH BULKHEAD RETAINING PLATE
20	05.961.03	4	M5 X 20 SCREW
21	2770391	4	M5 FLAT WASHER
22	2770394	4	M5 NYLOCK
23	8770173	-	3 PIN SOCKET

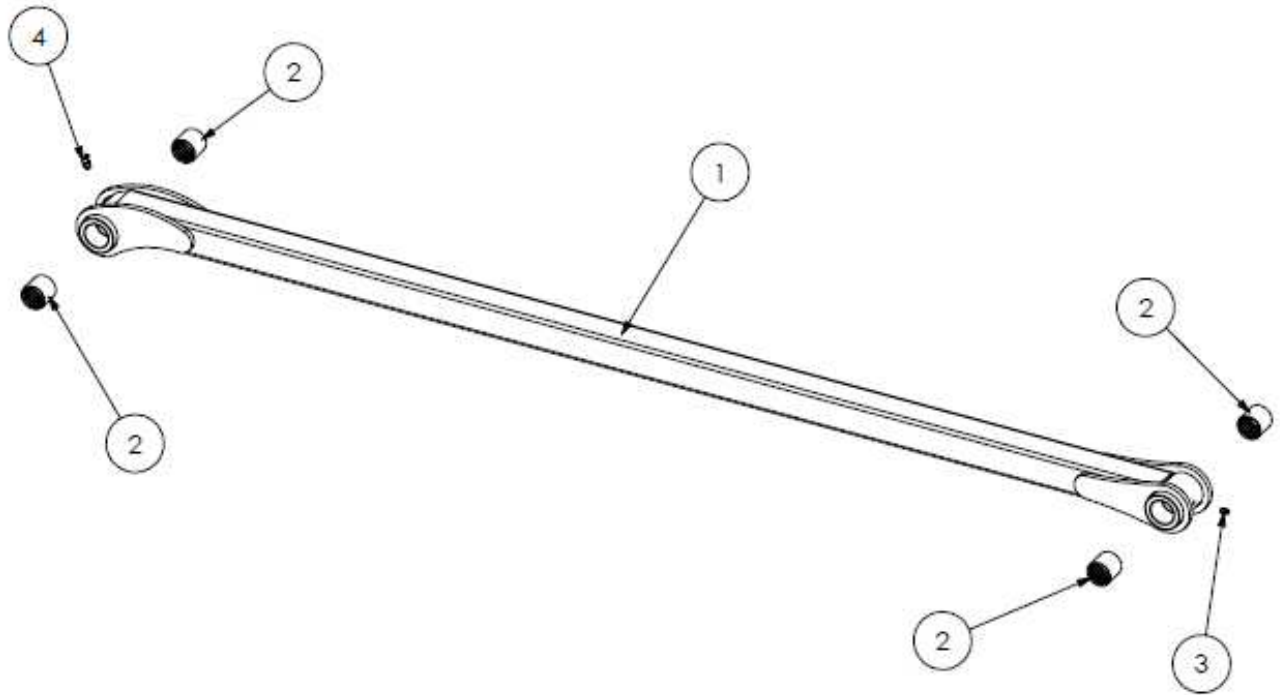


# Spearhead TWIGA PRO

560/650T700T/600VFR TIE BAR – SI80028.09

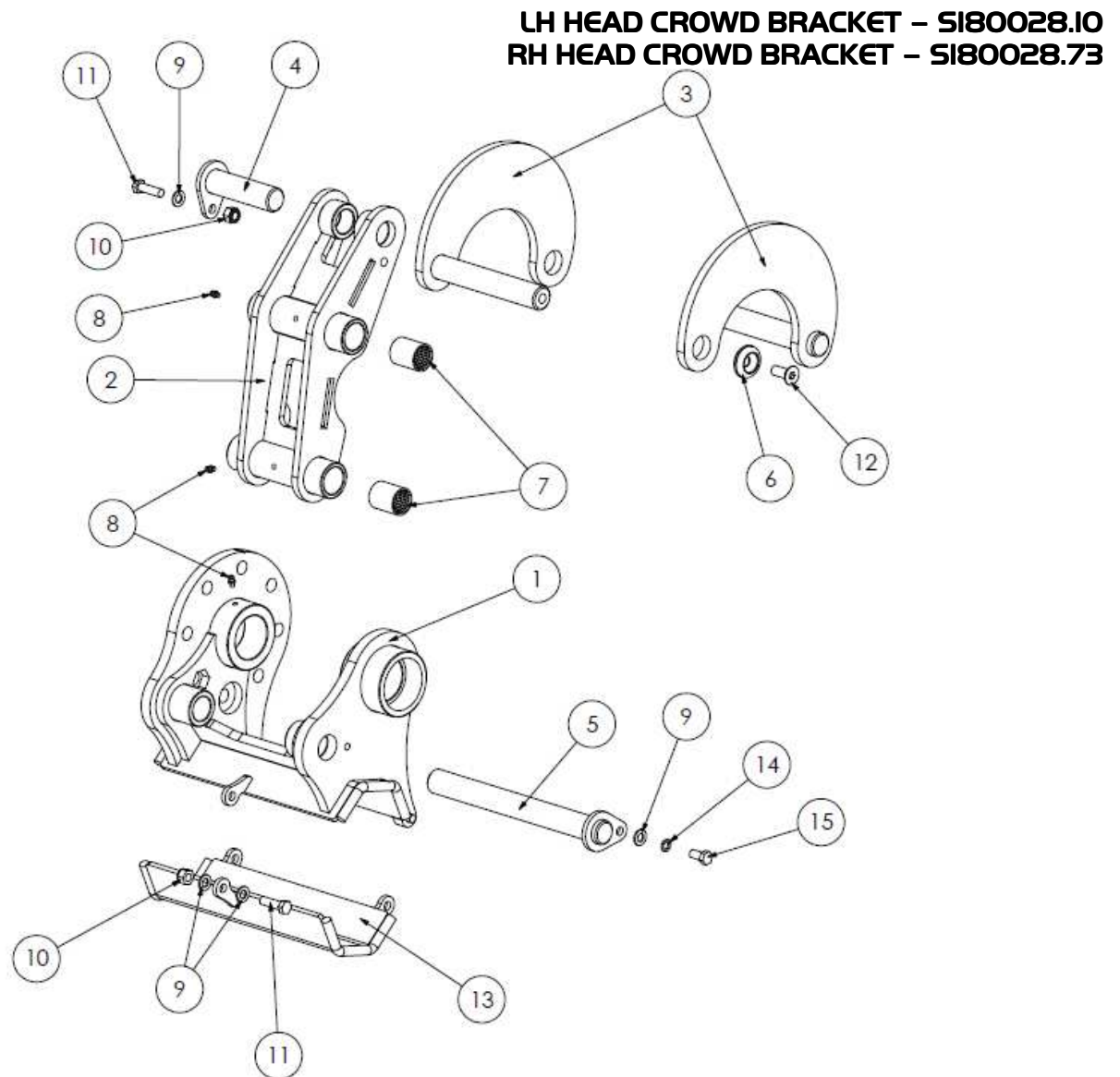
650VFR TIE BAR – SI80028.110

800T TIE BAR - SI80028.46



REF NO.	PART NO.	QTY.	DESCRIPTION
1	180709	1	TIE BAR - 560/650T/700T/600VFR
1	180001	1	TIE BAR - 650VFR
1	180723	1	TIE BAR - 800T
2	7115208	4	BUSH
3	2770467	1	M6 ST GREASE NIPPLE
4	2770459	1	M6 45° GREASE NIPPLE

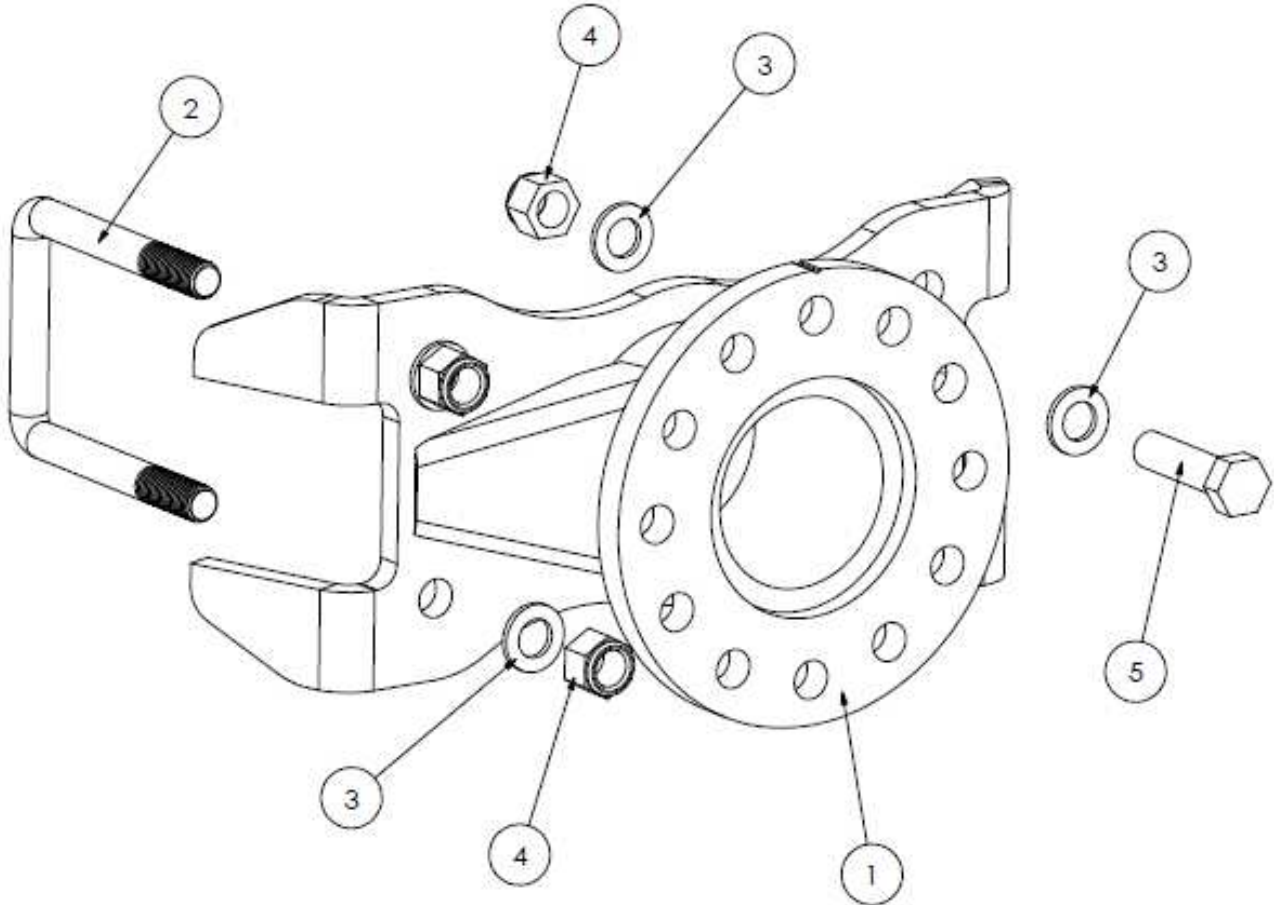
# Spearhead TWIGA PRO



REF NO.	PART NO.	QTY.	DESCRIPTION
1	180224	1	LH HEAD CROWD BRKT
1	180226	1	RH HEAD CROWD BRKT
2	180713	1	HEAD CROWD LINK
3	180714	2	CURVED LINK
4	1782106	1	PEAR PIN: 30 X 106 mm
5	1782107	1	PEAR PIN: 30 X 277 mm
6	1777209	2	RETAINING WASHER - 40mm
7	42654.08	4	BUSH
8	2770467	3	M6 ST GREASE NIPPLE
9	2770434	4	M10 FLAT WASHER
10	2770412	2	M10 NYLOCK
11	2770396	2	M10 X 35 BOLT
12	2770506	2	M12 X 30 SKT CSK SCREW
13	180225	1	HOSE TRAY
14	2770469	1	M10 SPRING WASHER
15	2770418	1	M10 X 20 BOLT

# Spearhead TWIGA PRO

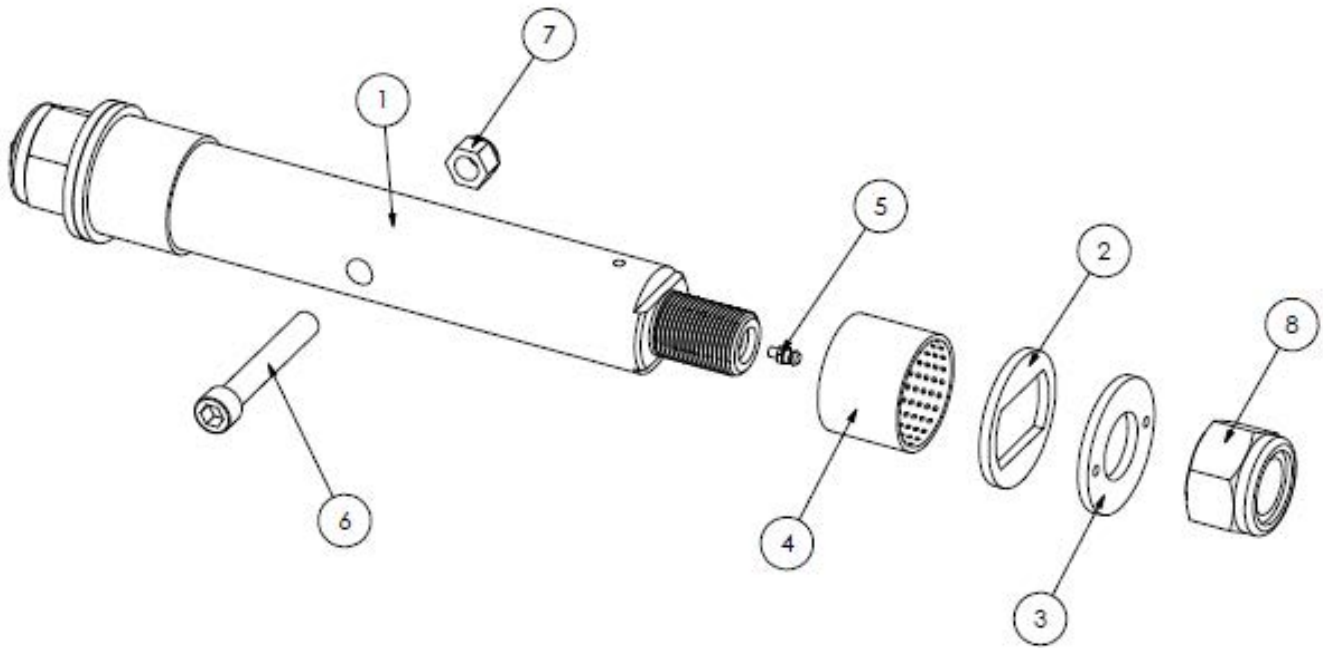
## HEAD MOUNT BRACKET – SI80028.II



REF NO.	PART NO.	QTY.	DESCRIPTION
1	180233	1	HEAD MOUNT BRACKET
2	2770625	2	M16 U BOLT
3	2770454	12	M16 FLAT WASHER
4	2770447	8	M16 NYLOCK
5	2770423	4	M16 X 60 BOLT

# Spearhead TWIGA PRO

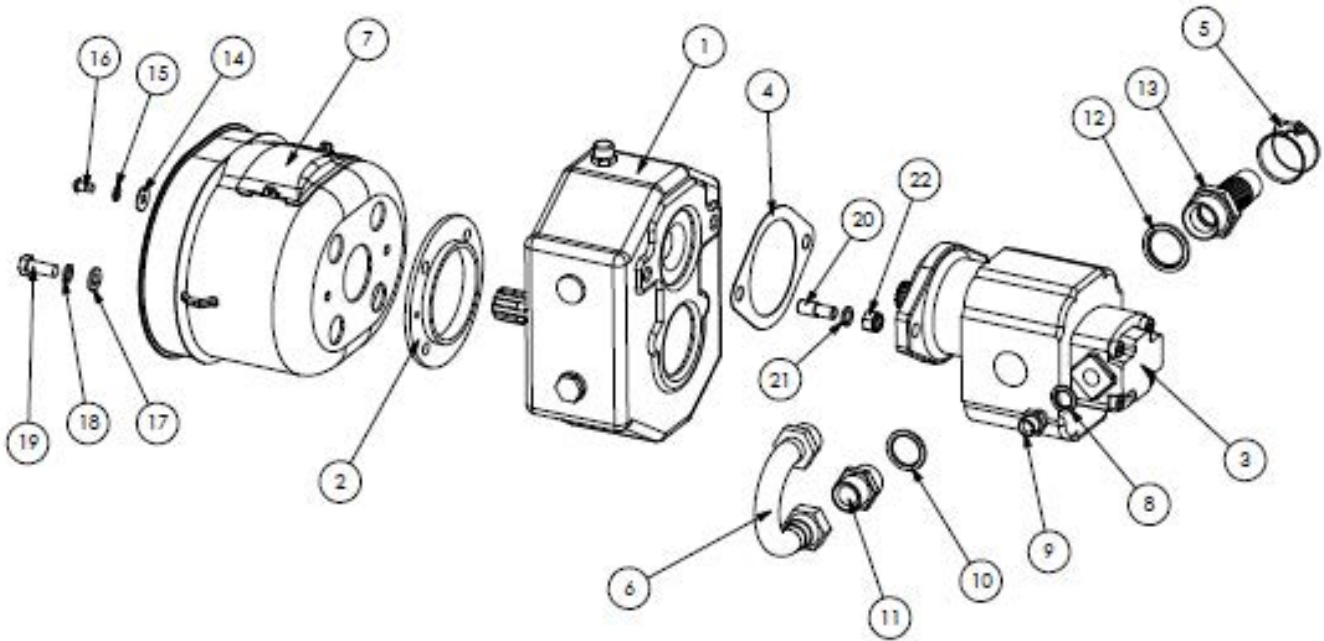
## MAIN PIVOT PIN – S180028.I2



REF NO.	PART NO.	QTY.	DESCRIPTION
1	1782077	1	PIVOT PIN
2	180718	2	LOCKING WASHER
3	180719	2	FLOATING WASHER
4	4600149	2	BUSH
5	2770467	2	M6 ST GREASE NIPPLE
6	2770347	1	M12 X 80 SKT CAP
7	2770417	1	M12 NYLOCK
8	05.287.07	2	M30 NYLOCK

# Spearhead TWIGA PRO

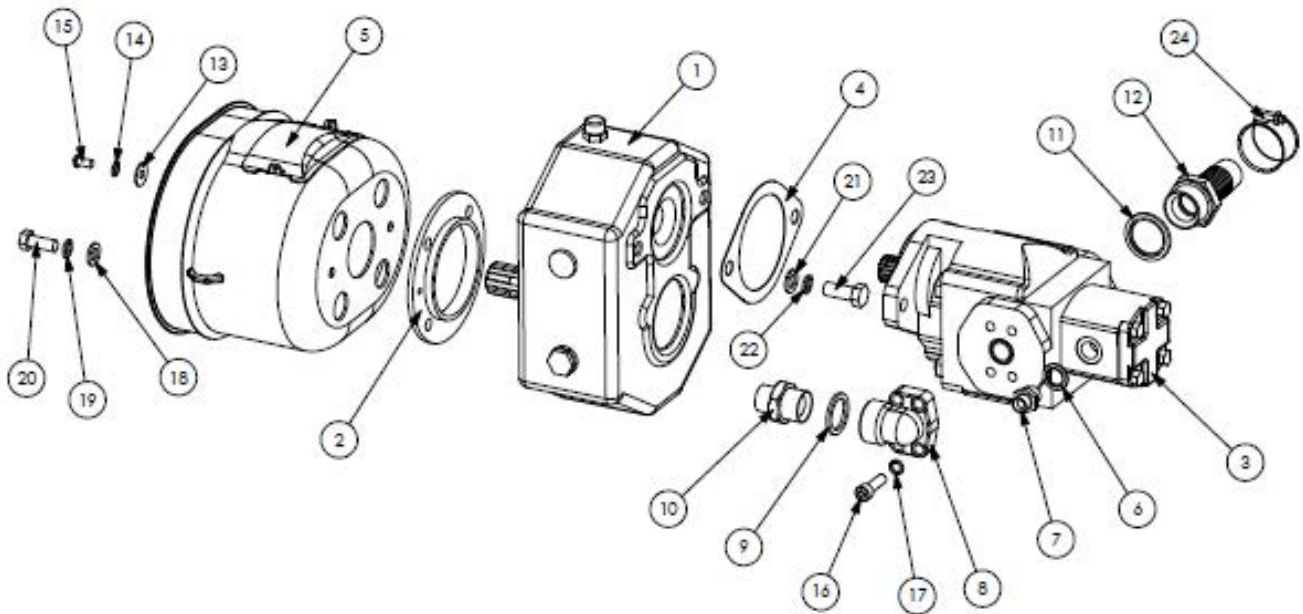
## LP HYDRAULIC DRIVE – S180028.I3



REF NO.	PART NO.	QTY.	DESCRIPTION
1	3151080	1	GEARBOX
2	1778200	1	GEARBOX SUPPORT RING
3	3151096	1	TANDEM PUMP
3	3151045	-	SERVICE PUMP
4	3151032G	1	GASKET
5	47603.01	2	CLAMP
6	46043.01	1	U BEND
7	5770116	1	CONE
8	3260072	1	1/2" BONDED SEAL
9	3360088	1	3/8" X 1/2" M-M
10	3260074	2	1" BONDED SEAL
11	3360092	1	1" M-M ADAPTOR
12	3700226	1	1 1/2" BONDED SEAL
13	3761006	1	1 1/2" MALE INSERT
14	2770244	2	M8 REPAIR WASHER
15	2770433	2	M8 SPRING WASHER
16	2770370	2	M8 X 16 SKT BUTTON
17	2770436	4	M12 FLAT WASHER
18	2770442	4	M12 SPRING WASHER
19	2770420	4	M12 X 30 BOLT
20	47591.02	2	M12 X 14 STUD
21	05.283.03	2	M12 SHAKE PROOF
22	05.287.03	2	M12 V LOCK NUT

# Spearhead TWIGA PRO

HP HYDRAULIC DRIVE – S180028.I4



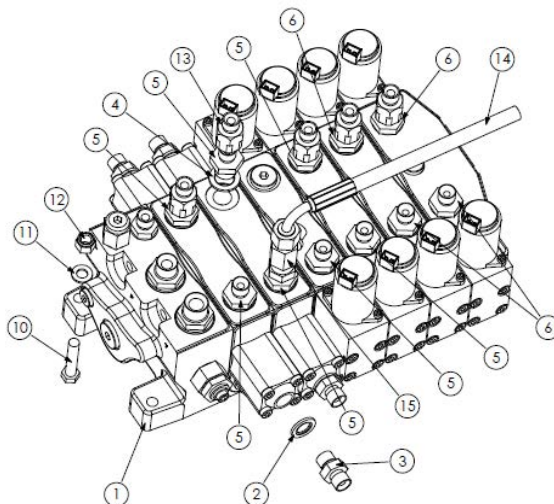
REF NO.	PART NO.	QTY.	DESCRIPTION
1	3151080	1	GEARBOX
2	1778200	1	GEARBOX SUPPORT RING
3	3151090	1	TANDEM PUMP
4	3151032G	1	GASKET
5	5770116	1	CONE
6	3260072	1	1/2" BONDED SEAL
7	3360088	1	1/2" M-M
8	3151097	1	3/4 PORT ELBOW
9	3260074	1	1 BONDED SEAL
10	3360091	1	1"-3/4" M-M
11	3700226	1	1 1/2" BONDED SEAL
12	3761006	1	1 1/2" MALE INSERT
13	2770244	2	M8 REPAIR WASHER
14	2770433	2	M8 SPRING WASHER
15	2770370	2	M8 X 16 SKT BUTTON
16	2770396	4	M10 X 35 SKT CAP
17	2770469	4	M10 SPRING WASHER
18	2770436	4	M12 FLAT WASHER
19	2770442	4	M12 SPRING WASHER
20	2770420	4	M12 X 30 BOLT
21	2770455	2	M14 FLAT
22	2770457	2	M14 SPRING
23	2770453	2	M14 X 35 BOLT
24	47603.01	2	CLAMP



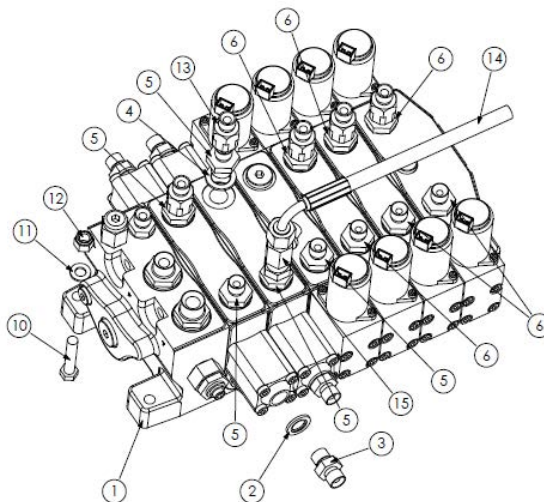


# Spearhead TWIGA PRO

## CONTROL VALVE: 6 BANK TELE + AUTOPILOT – S180028.19



## CONTROL VALVE: 6 BANK VFR + AUTOPILOT – S180028.20

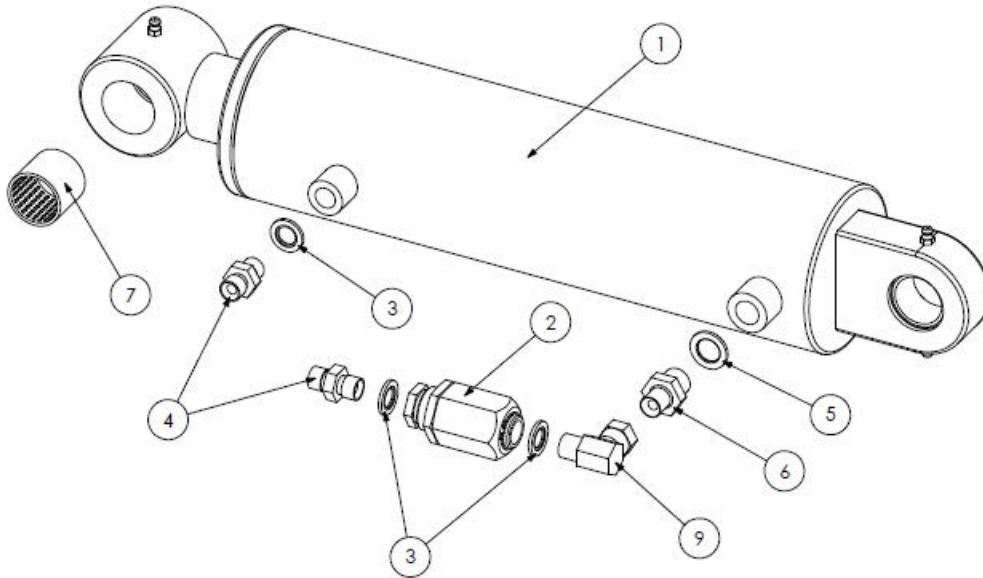


REF NO.	PART NO.	28.15	28.16	28.17	28.18	28.19	28.20	DESCRIPTION
1	3910325B	1	-	-	-	-	-	4 BANK VALVE ASSEMBLY
1	3910299B	-	1	1	-	-	-	5 BANK VALVE ASSEMBLY
1	3910326B	-	-	-	1	-	-	5 BANK VALVE ASSEMBLY
1	3910327B	-	-	-	-	1	1	6 BANK VALVE ASSEMBLY
2	3260070	5	5	5	5	5	5	1/4" BONDED SEAL
3	3360080	5	5	5	5	5	5	1/4" M-M
4	3260071	8	10	10	9	11	11	3/8" BONDED SEAL
5	3360083	4	6	4	5	7	5	1/4"-3/8" M-M
6	3360098	4	4	6	4	4	6	1/4"-3/8" M-M R1
7	3360088	1	1	1	1	1	1	3/8"-1/2" M-M
8	3260072	2	2	2	2	2	2	1/2" BONDED SEAL
9	3460301	1	1	1	1	1	1	1/2" M-M
10	05.291.03	4	4	4	4	4	4	M8 X 40 BOLT
11	2770432	4	4	4	4	4	4	M8 FLAT WASHER
12	2770416	4	4	4	4	4	4	M8 NYLOCK
13	3250148	4	5	5	5	6	6	1/4" M-FM FIXED
14	3590005.01	-	-	-	1	1	1	LINK HOSE: 400mm
15	3460300	-	-	-	1	1	1	1/4" TEE



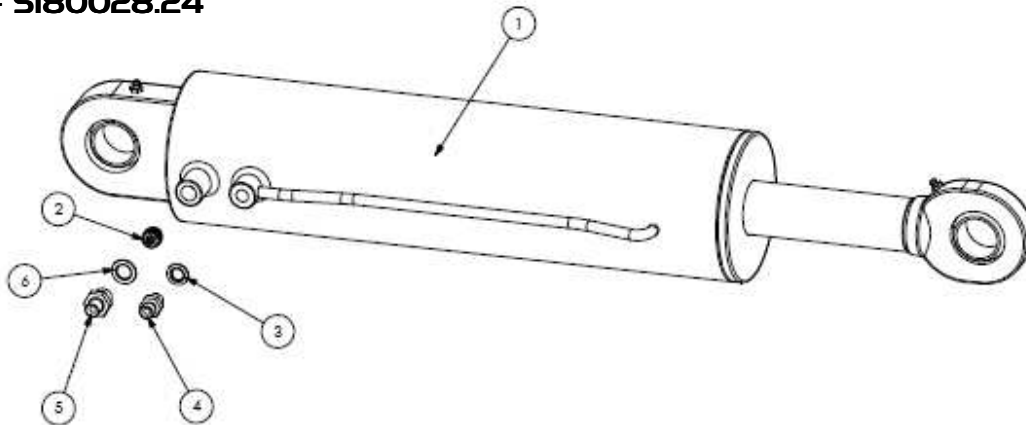
# Spearhead TWIGA PRO

## SLEW RAM – SI80028.23



REF NO.	PART NO.	QTY.	DESCRIPTION
1	3580702	1	RAM
2	3900010	1	VARIABLE RESTRICTOR
3	3260070	3	1/4" BONDED SEAL
4	3360080	2	1/4" M-M
5	3260071	1	3/8" BONDED SEAL
6	3360083	1	3/8"-1/4" M-M
7	42654.01	2	BUSH
8	3580690.01	-	SEAL KIT
9	3460107	1	1/4" COMP 90°

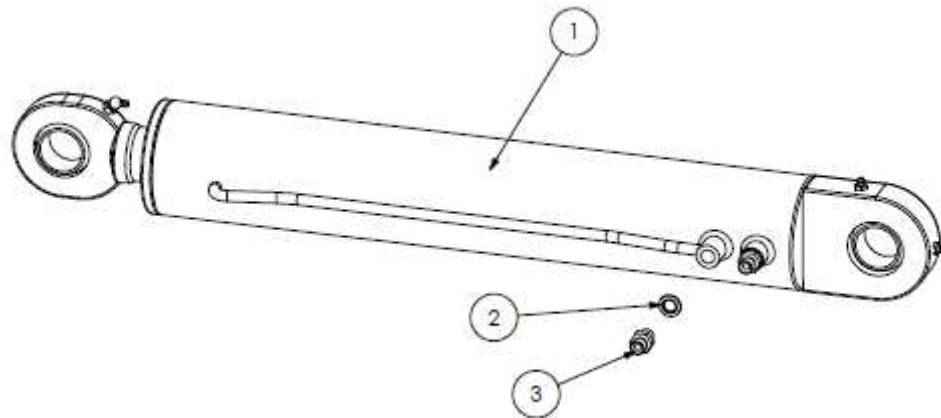
## LIFT RAM – SI80028.24



REF NO.	PART NO.	QTY.	DESCRIPTION
1	3580677	1	RAM
2	3600118	1	HOSE BURST
3	3260070	1	1/4" BONDED SEAL
4	3360080	1	1/4" M-M
5	3360083	1	3/8"-1/4" M-M
6	3260071	1	3/8" BONDED SEAL
7	3580677.01	-	SEAL KIT

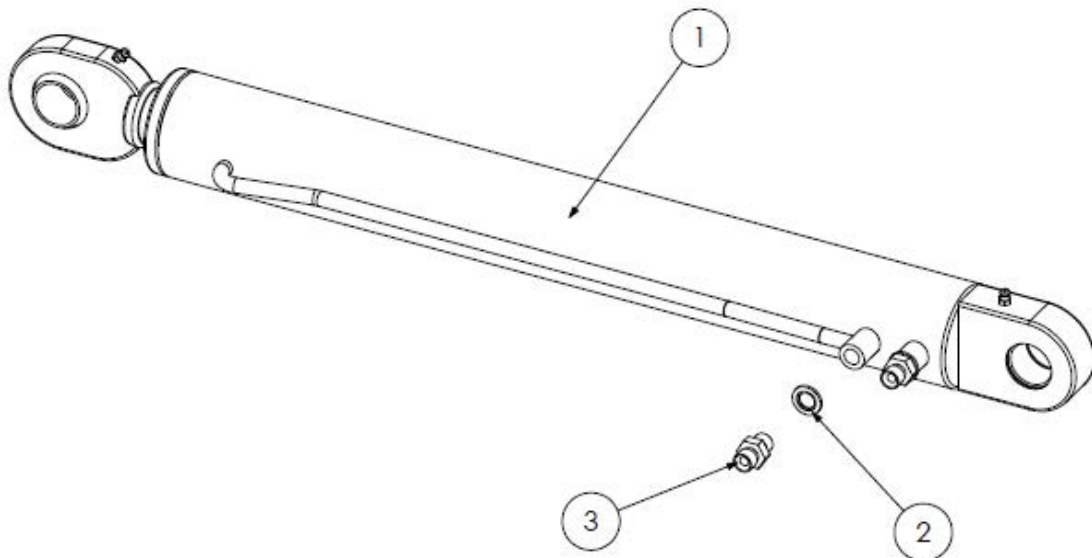
# Spearhead TWIGA PRO

## DIPPER RAM – S180028.25



REF NO.	PART NO.	QTY.	DESCRIPTION
1	3580683	1	RAM
2	3260070	2	1/4" BONDED SEAL
3	3360080	2	1/4" M-M
4	3580683.01	-	SEAL KIT

## HEAD RAM – S180028.26



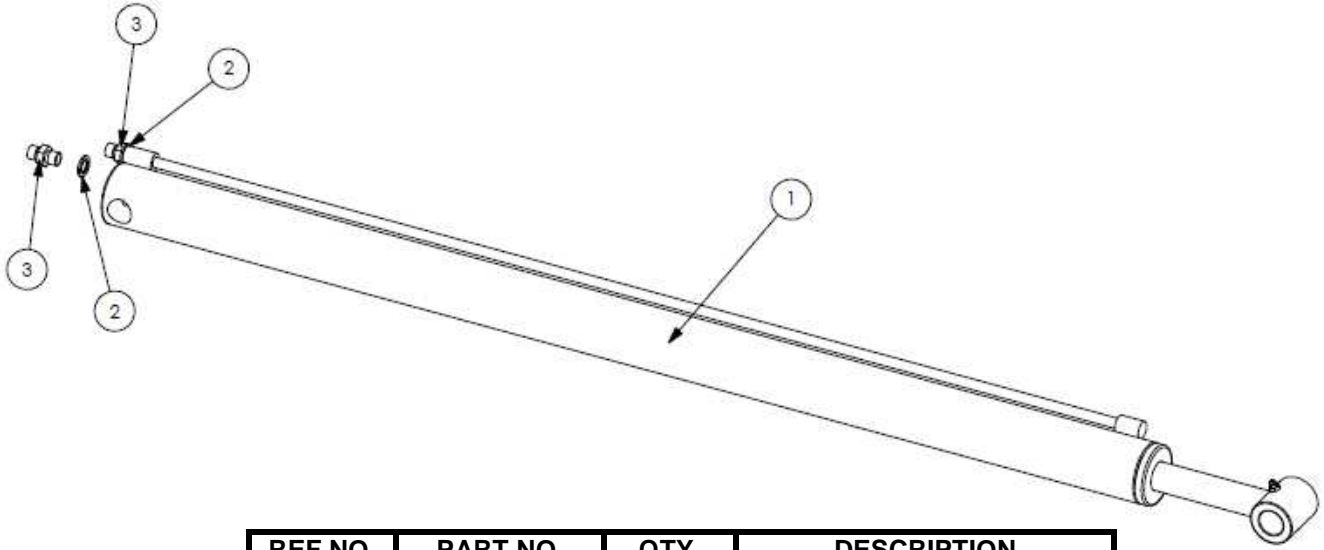
REF NO.	PART NO.	QTY.	DESCRIPTION
1	3580704	1	RAM
2	3260070	2	1/4" BONDED SEAL
3	3360080	2	1/4" M-M
4	3580374.01	-	SEAL KIT

# Spearhead TWIGA PRO

**650T TELE RAM – SI80028.27**

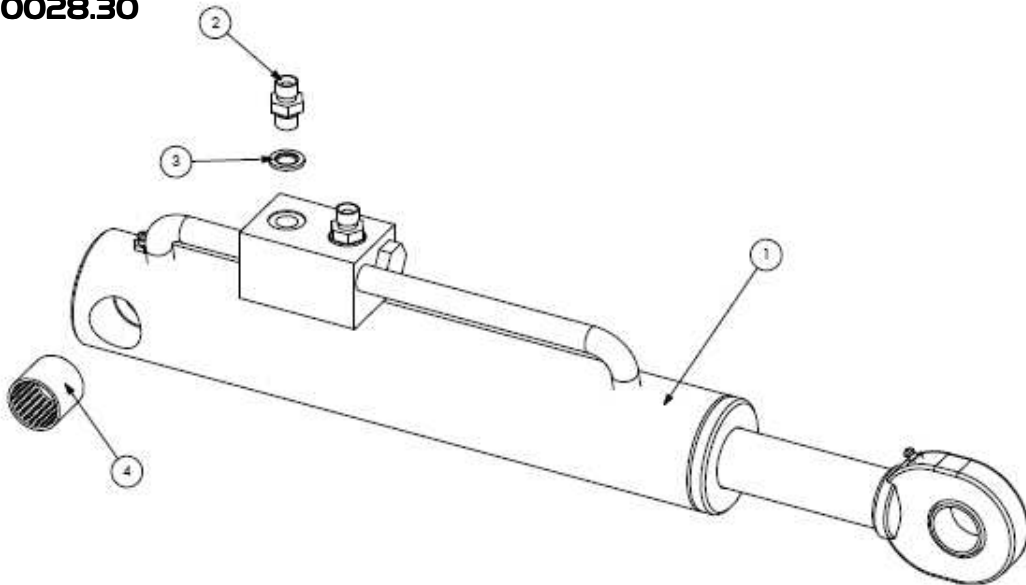
**700T TELE RAM – SI80028.28**

**800T TELE RAM – SI80028.29**



REF NO.	PART NO.	QTY.	DESCRIPTION
1	3580653A	1	650T RAM
1	3580654A	1	700T RAM
1	3580684	1	800T RAM
2	3260070	2	1/4" BONDED SEAL
3	3360080	2	1/4" M-M
4	3570665HP	-	650T/700T SEAL KIT
4	3580684.01	-	800T SEAL KIT

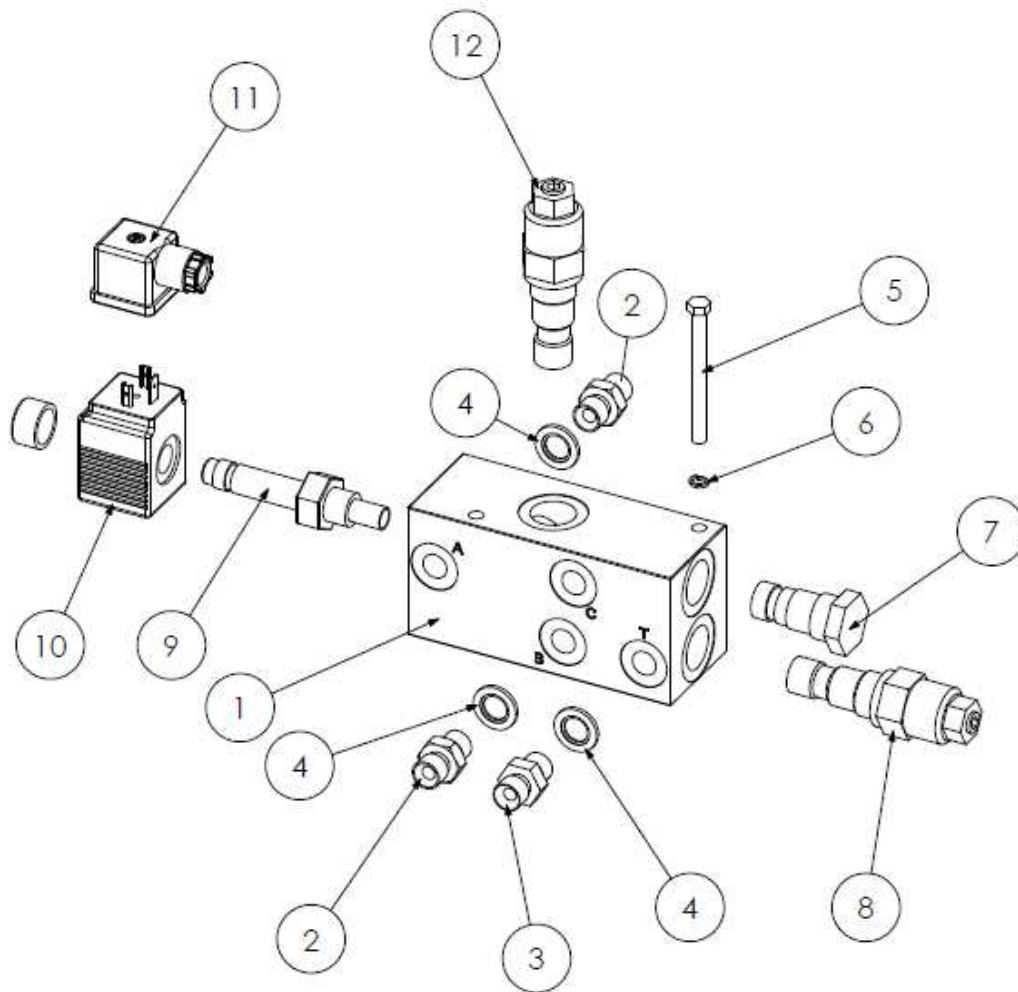
**VFR RAM – SI80028.30**



REF NO.	PART NO.	QTY.	DESCRIPTION
1	3580695	1	RAM
2	3360080	2	1/4" M-M
3	3260070	2	1/4" BONDED SEAL
4	42654.01	2	BUSH
5	3580695.01	-	SEAL KIT

# Spearhead TWIGA PRO

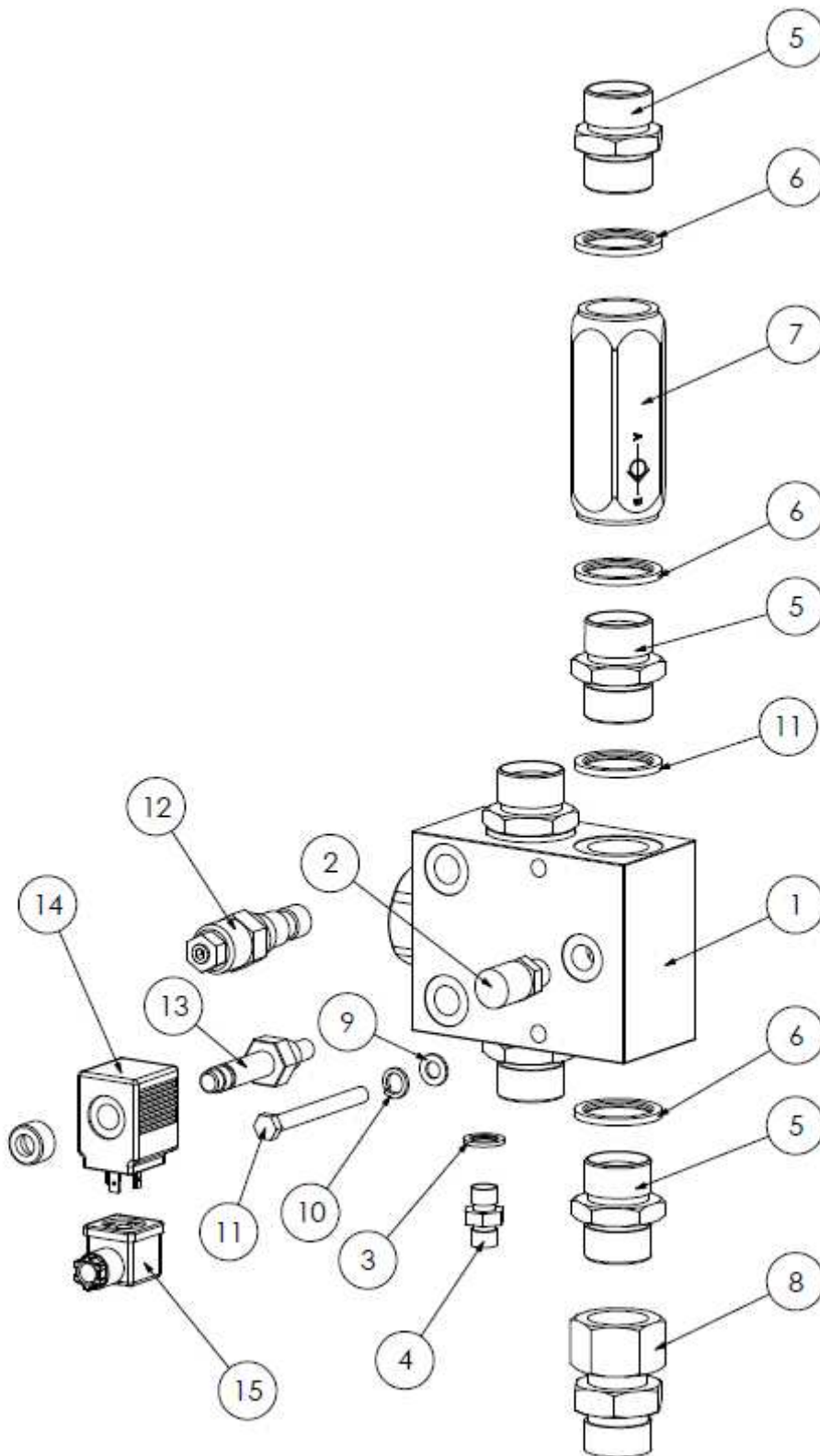
## BREAK BACK VALVE – S I80028.4I



REF NO.	PART NO.	QTY.	DESCRIPTION
1	3610057	1	VALVE ASSEMBLY
2	3360080	6	¼" M-M
3	3360097	1	¼" M-M R1
4	3260070	7	¼" BONDED SEAL
5	30.068.93	2	M6 X 70 BOLT
6	05.282.07	2	M6 SPRING WASHER
7	3610054	-	P.O.C. CARTRIDGE
8	3600144	-	RELIEF VALVE CARTRIDGE
9	3610032A	-	SOLENOID CARTRIDGE
10	3610030A	-	COIL
11	3610048	-	DIN CONNECTOR
12	3600137	-	SEQUENCE CARTRIDGE

# Spearhead TWIGA PRO

LP HYDRAULICS ROTOR VALVE – SI80028.42  
HP HYDRAULICS ROTOR VALVE – SI80028.43



# Spearhead TWIGA PRO

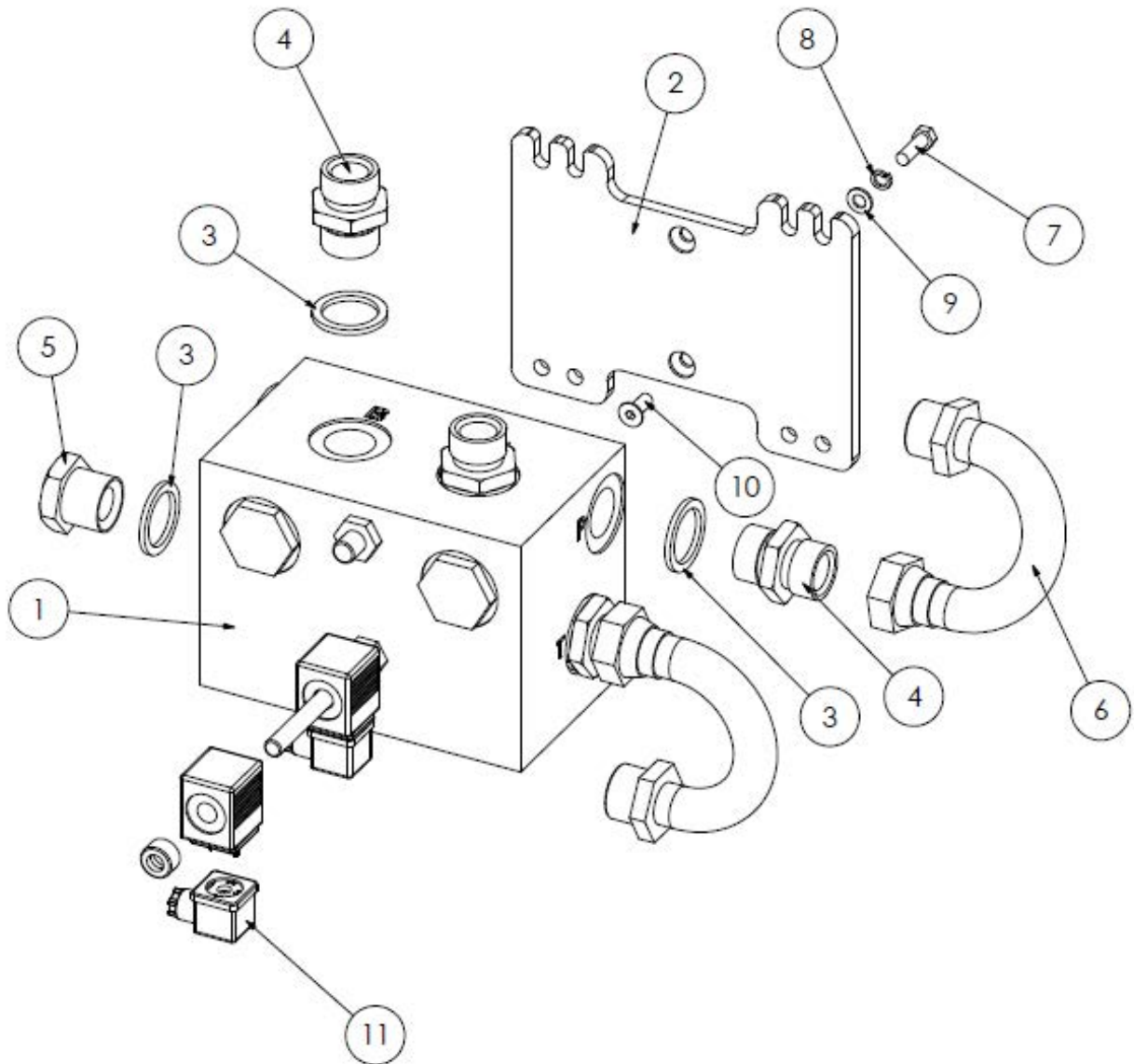
---

LP HYDRAULICS ROTOR VALVE – SI80028.42  
HP HYDRAULICS ROTOR VALVE – SI80028.43

REF NO.	PART NO.	QTY.	DESCRIPTION
1	3600099A	1	LP VALVE ASSEMBLY
1	3600099B	1	HP VALVE ASSEMBLY
2	3360110	1	¼" TEST PORT
3	3260070	1	¼" BONDED SEAL
4	3360100	1	¼" M-M R1.5
5	3260074	5	1" M-M
6	3360092	6	1" BONDED SEAL
7	3600089	1	CHECK VALVE
8	3360093	1	1" M-FM
9	2770432	2	M8 FLAT WASHER
10	2770433	2	M8 SPRING WASHER
11	2772289	2	M8 X 80 BOLT
12	3600144A	-	RELIEF VALVE CARTRIDGE
13	3600142A	-	SINGLE POPPET VALVE
14	3610030A	-	COIL
15	3610048	-	DIN CONNECTOR

# Spearhead TWIGA PRO

## LP HYDRAULICS REVERSE ROTOR VALVE – S180028.44

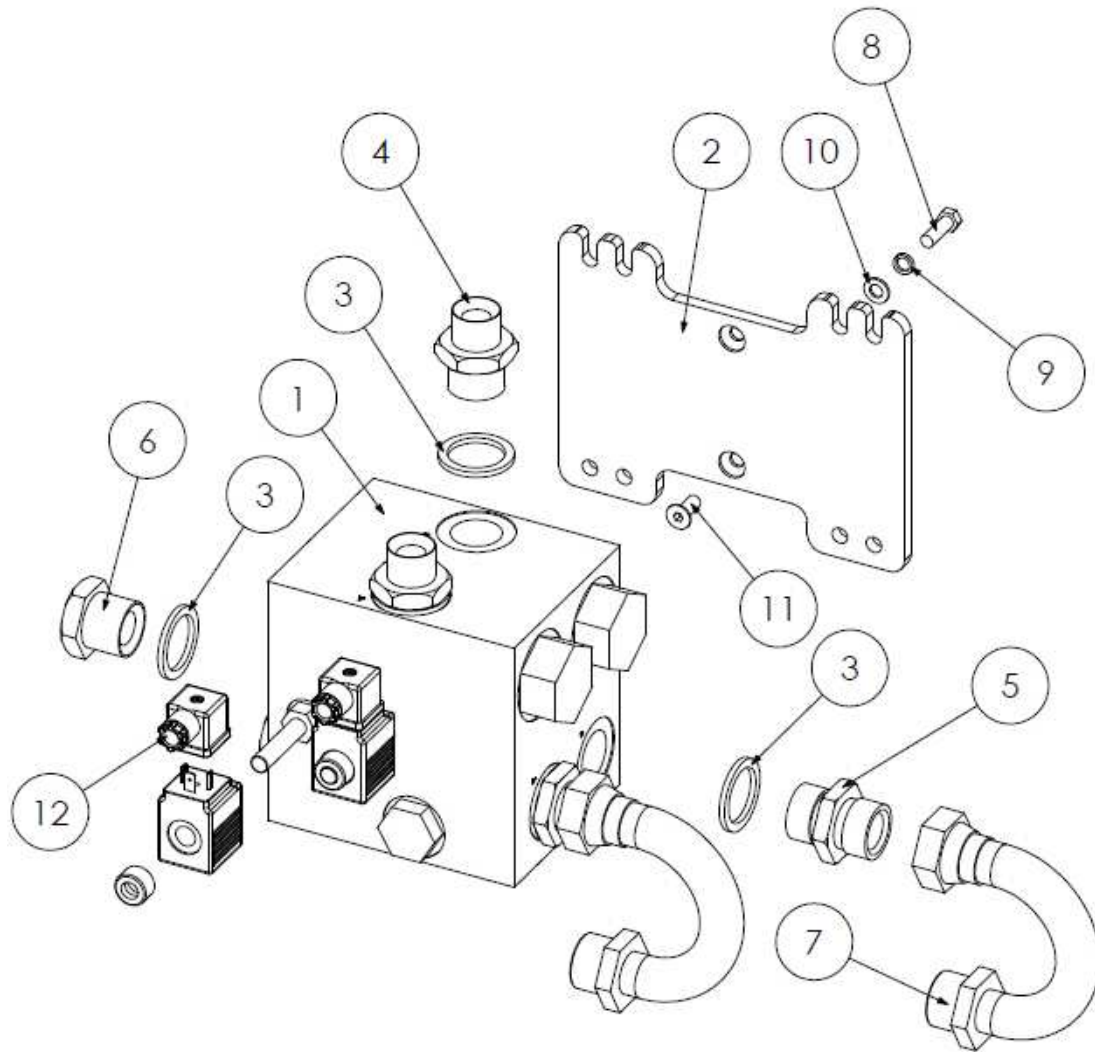


REF NO.	PART NO.	QTY.	DESCRIPTION
1	42768.01	1	VALVE ASSEMBLY
2	180727	1	MOUNT PLATE
3	3260074	6	1" BONDED SEAL
4	3360092	2	1" M-M
5	05.433.03	2	1" BLANKING PLUG
6	46043.01	2	1" 180° U BEND
7	2770415	4	M8 X 25 BOLT
8	2770433	4	M8 SPRING WASHER
9	2770432	4	M8 FLAT WASHER
10	2770435	2	M8 X 20 SKT CSK SCREW
11	3610048	-	DIN CONNECTOR



# Spearhead TWIGA PRO

## HP HYDRAULICS REVERSE ROTOR VALVE – 5180028.80

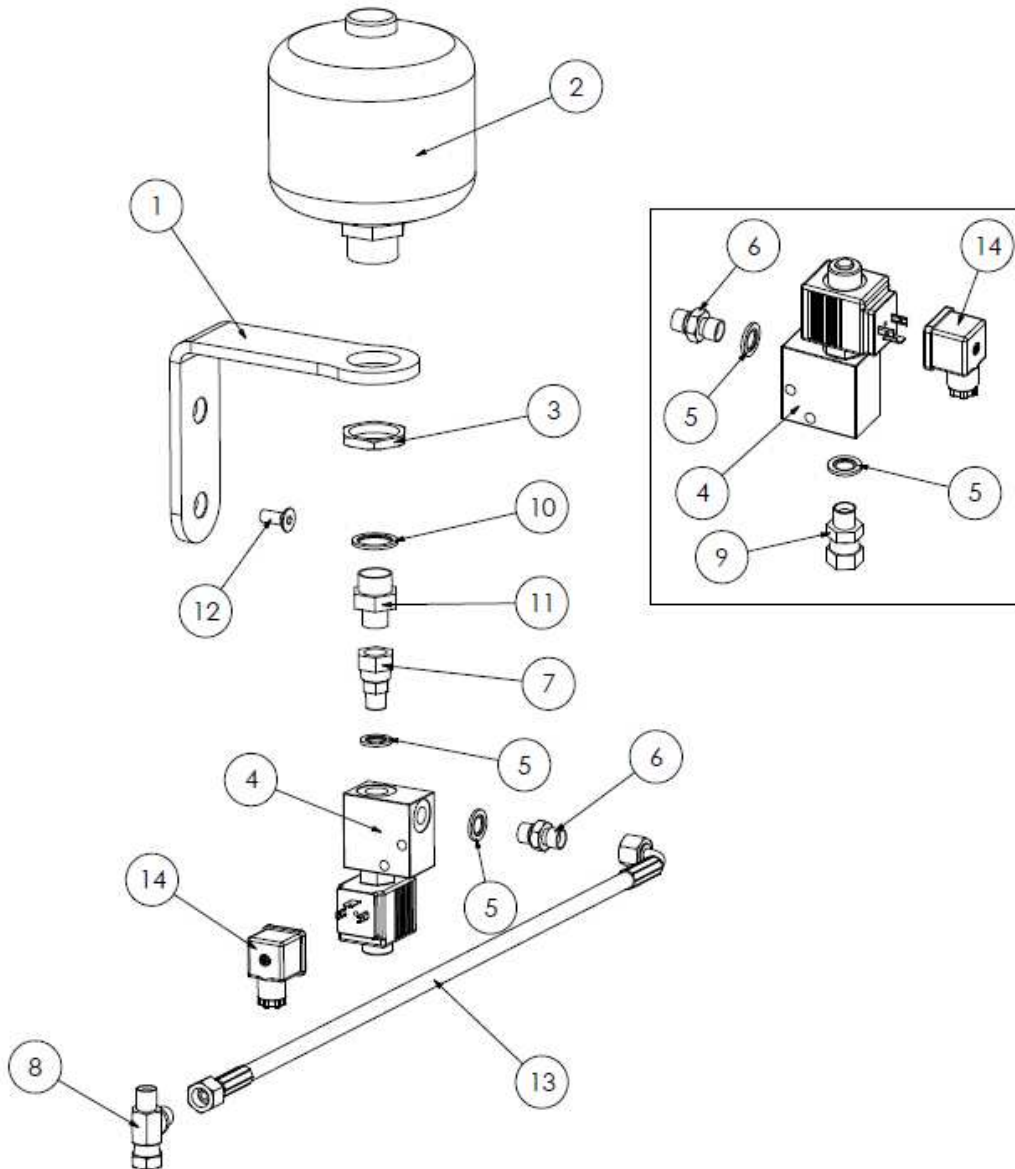


REF NO.	PART NO.	QTY.	DESCRIPTION
1	42768.08	1	VALVE ASSEMBLY
2	180727	1	MOUNT PLATE
3	3260074	6	1" BONDED SEAL
4	3360091	2	1" M - 3/4 M ADAPTOR
5	3360092	2	1" M-M
6	05.433.03	2	1" BLANKING PLUG
7	46043.01	2	1" 180°U BEND
8	2770415	4	M8 X 25 BOLT
9	2770433	4	M8 SPRING WASHER
10	2770432	4	M8 FLAT WASHER
11	2770435	2	M8 X 20 SKT CSK SCREW
12	3610048	-	DIN CONNECTOR



# Spearhead TWIGA PRO

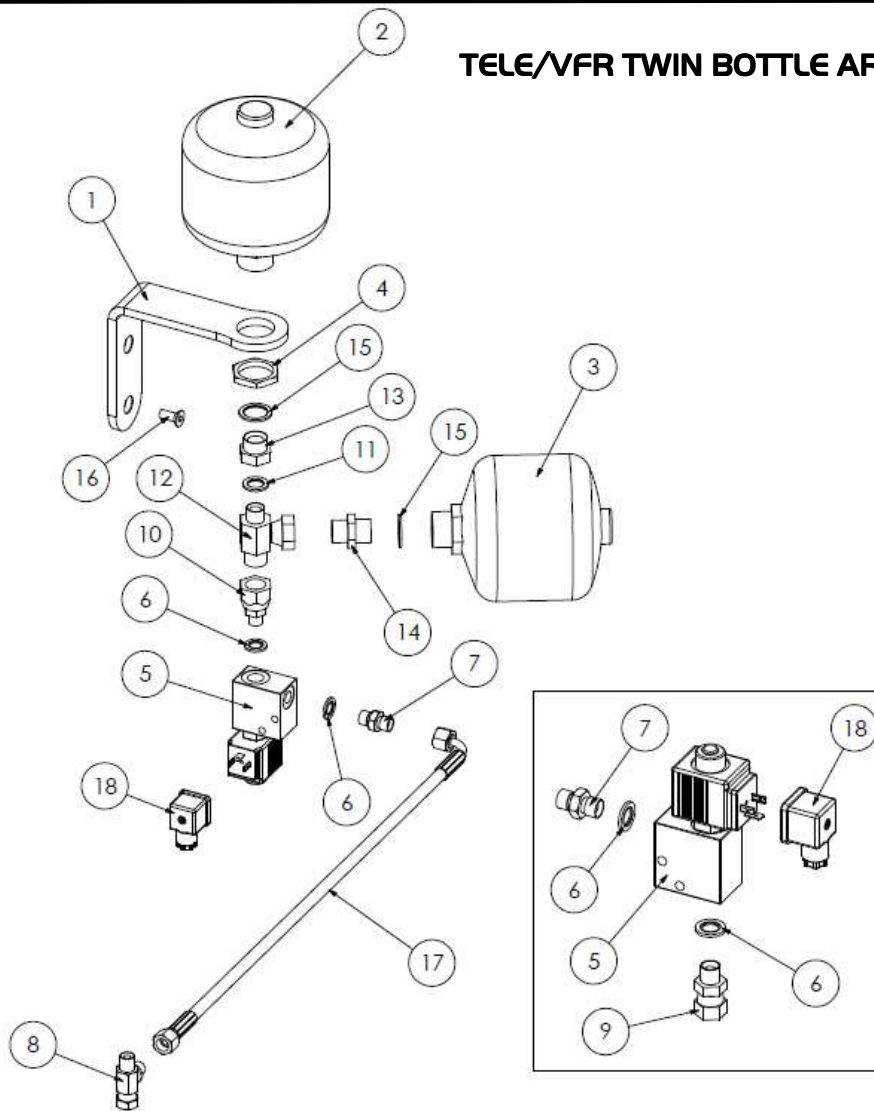
## 560 SINGLE BOTTLE ARM FLOAT – SI80028.50



REF NO.	PART NO.	QTY.	DESCRIPTION
1	180917	1	BRACKET
2	3900071	1	ACCUMULATOR BOTTLE - 32 Bar
3	8126035	1	M33 NUT
4	3610053	2	ELECTRONIC VALVE
5	3260070	4	1/4" BONDED SEAL
6	3360080	2	1/4" M-M
7	3360079	1	1/4"-3/8" M-FM SW
8	3460300	2	1/4" FM/M/M TEE
9	3360081	1	1/4" M-FM SW
10	8650322	1	M22 BONDED SEAL
11	G2410380	1	3/8"-M22 M-M
12	2770435	2	M8 X 20 CSK SCREW
13	3760115	2	HOSE
14	3610048	-	DIN PLUG

# Spearhead TWIGA PRO

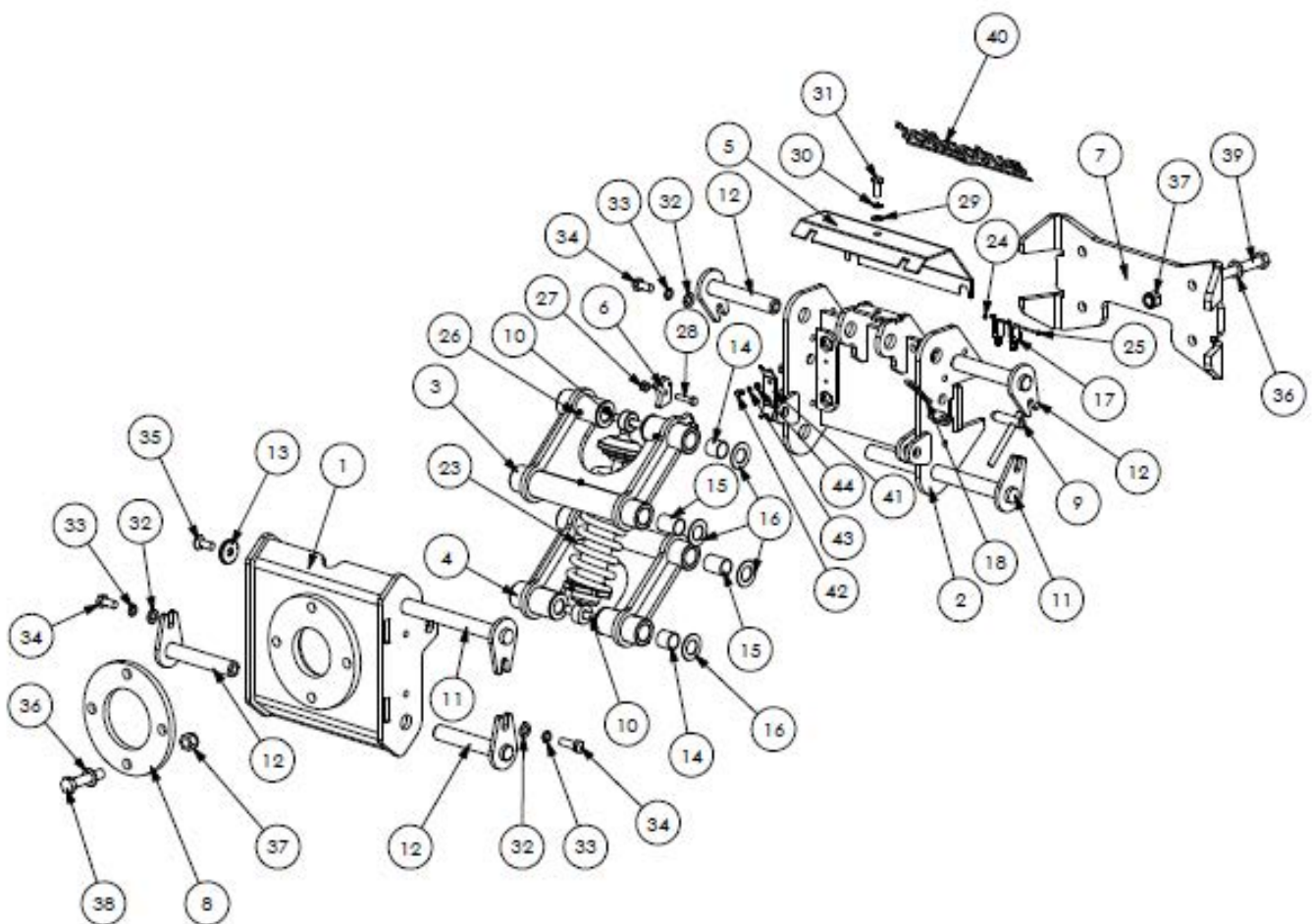
## TELE/VFR TWIN BOTTLE ARM FLOAT – 5180028.84



REF NO.	PART NO.	QTY.	DESCRIPTION
1	180917	1	BRACKET
2	3900071	1	ACCUMULATOR - 32 Bar
3	3900074	1	ACCUMULATOR - 80 Bar
4	8126035	1	M33 NUT
5	3610053	2	ELECTRONIC VALVE
6	3260070	4	1/4" BONDED SEAL
7	3360080	2	1/4" M-M
8	3460300	2	1/4" FM/M/M TEE
9	3360081	1	1/4" M-FM SW
10	3490003	1	1/4" M - 1/2" FM SW
11	3260071	1	3/8" BONDED SEAL
12	04.056.50	1	3/8" M - 1/2" M - 1/2" FM SW
13	8581284	1	3/8" FM - M22 M
14	3460120	1	1/2"-M22 M-M
15	8650322	2	M22 BONDED SEAL
16	2770435	2	M8 X 20 CSK SCREW
17	3760115	2	HOSE
18	3610048	-	DIN PLUG

# Spearhead TWIGA PRO

AUTOPILOT – SI80028.52



# Spearhead TWIGA PRO

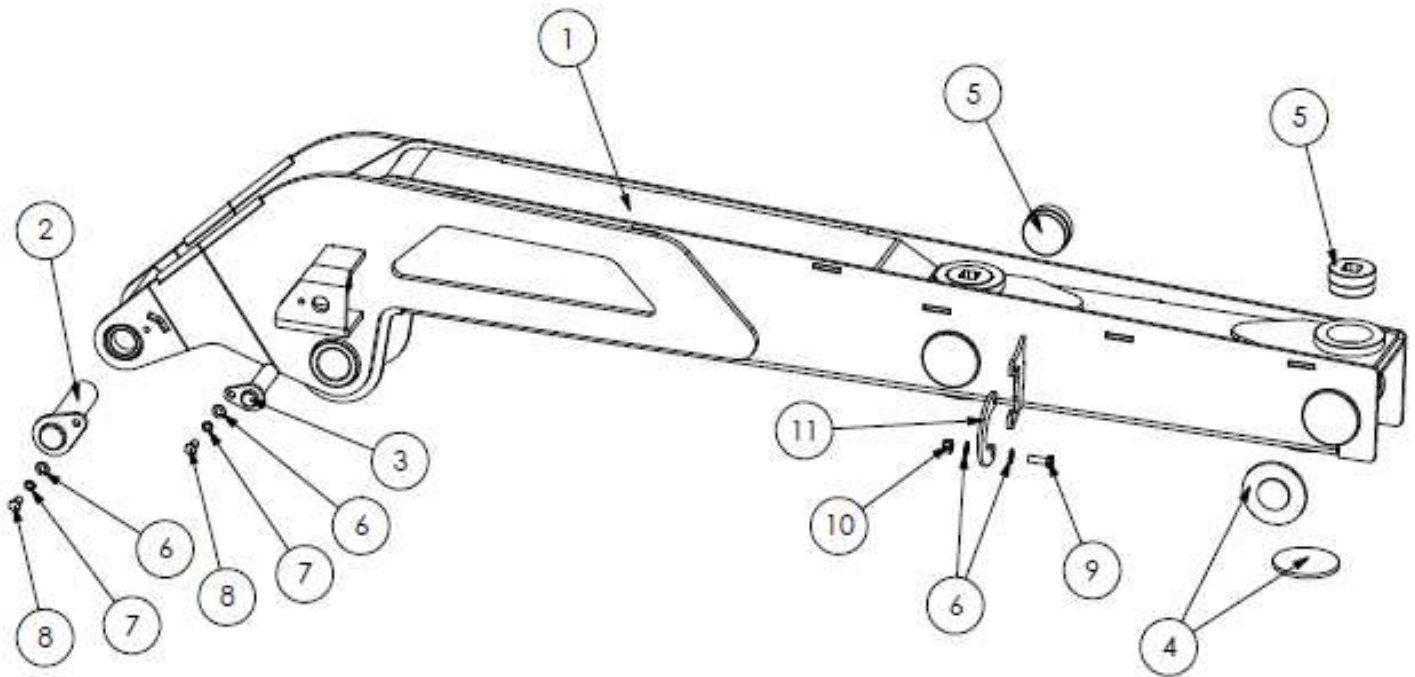
**AUTOPILOT – S180028.52**

REF NO.	PART NO.	QTY.	DESCRIPTION
1	1777816A	1	BACK PLATE
2	1777817A	1	FRONT PLATE
3	1777818A	1	FLOAT LINK + CAM
4	1777818B	1	FLOAT LINK
5	1777748A	1	CAM GUARD
6	1777848A	1	CAM
7	1777325B	1	CLAMP PLATE
8	180896	1	SPACER PLATE
9	1777749	2	LOCKING PIN
10	1777822	2	PIN
11	1777941	2	PEAR PIN: 25.4 X 310 mm
12	1777942	4	PEAR PIN: 25.4 X 145 mm
13	1777209	2	RETAINING WASHER - 40mm
14	4600417	8	BUSH - SHORT
15	4600418	4	BUSH - LONG
16	4600419	8	THRUST WASHER
17	3910275	2	SWITCH
18	6310194	2	R CLIP
19	8770600	1	SHOCK ABSORBER
20	8770600/1	-	TOP COLLET
21	8770600/2	-	THREADED COLLET
22	8770600/3	-	SPHERICAL BEARING
23	8770601	1	SPRING
24	2770236	2	M3 NYLOCK
25	2770237	2	M3 X 35 BOLT
26	2770467	6	M6 ST GREASE NIPPLE
27	2770416	1	M8 NYLOCK
28	2770488	1	M8 X 35 BOLT
29	2770434	1	M10 FLAT WASHER
30	2770469	1	M10 SPRING WASHER
31	2770407	1	M10 X 25 BOLT
32	2770436	6	M12 FLAT WASHER
33	2770442	6	M12 SPRING WASHER
34	2770484	6	M12 X 25 BOLT
35	2770506	2	M12 X 30 SKT CSK SCREW
36	2770454	8	M16 FLAT WASHER
37	2770447	8	M16 NYLOCK
38	05.264.40	4	M16 X 70 BOLT
39	2770346	4	M16 X 140 BOLT
40	8770696	1	DECAL
41	180223	2	NUT KEEPER PLATE
42	2770385	4	M6 X 10 BOLT
43	2771408	4	M6 FLAT WASHER
44	05.282.07	4	M6 SPRING WASHER
45	8770782	1	LOOM

# Spearhead TWIGA PRO

---

LH 650T OUTER DIPPER ARM – SI80028.55  
RH 650T OUTER DIPPER ARM – SI80028.74  
LH 700T OUTER DIPPER ARM – SI80028.57  
RH 700T OUTER DIPPER ARM – SI80028.76  
LH 800T OUTER DIPPER ARM – SI80028.59  
RH 800T OUTER DIPPER ARM – SI80028.78



# Spearhead TWIGA PRO

---

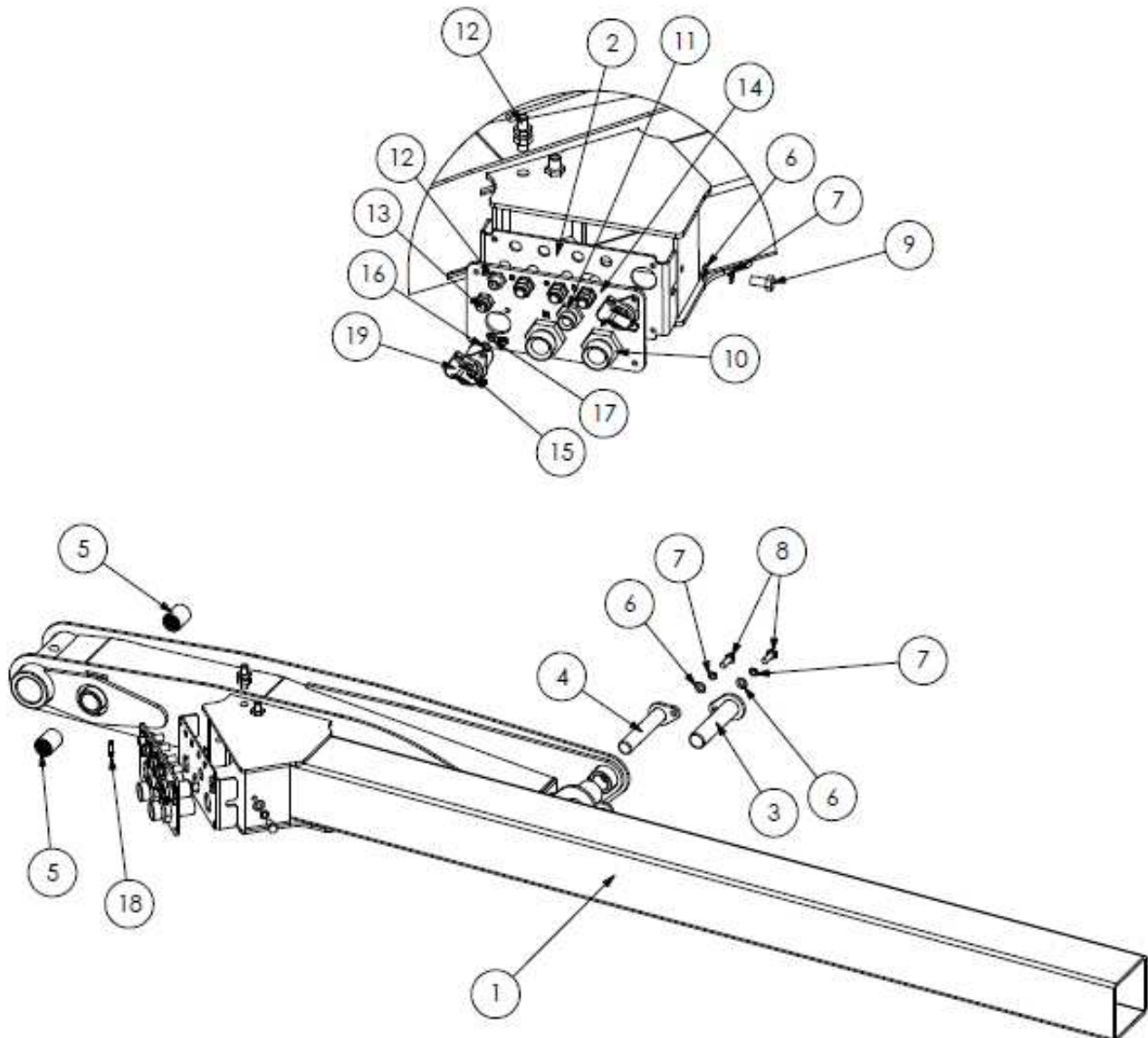
LH 650T OUTER DIPPER ARM – SI80028.55  
RH 650T OUTER DIPPER ARM – SI80028.74  
LH 700T OUTER DIPPER ARM – SI80028.57  
RH 700T OUTER DIPPER ARM – SI80028.76  
LH 800T OUTER DIPPER ARM – SI80028.59  
RH 800T OUTER DIPPER ARM – SI80028.78

REF NO.	PART NO.	QTY.	DESCRIPTION
1	180250	1	LH OUTER DIPPER ARM - 650T
1	180252	1	RH OUTER DIPPER ARM - 650T
1	180254	1	LH OUTER DIPPER ARM - 700T
1	180256	1	RH OUTER DIPPER ARM - 700T
1	180889	1	LH OUTER DIPPER ARM - 800T
1	180918	1	RH OUTER DIPPER ARM - 800T
2	1782120	1	PEAR PIN: 40 X 164 mm
3	1782108	1	PEAR PIN: 25.4 X 99 mm
4	4600152	4	WEAR PAD - 650T / 700T
4	4600152	6	WEAR PAD - 800T
5	4600122A	4	ADJUSTABLE WEAR PAD
5	4600122A	6	ADJUSTABLE WEAR PAD - 800T
6	2770434	4	M10 FLAT WASHER
7	2770469	2	M10 SPRING WASHER
8	2770418	2	M10 X 20 BOLT
9	2770396	1	M10 X 35 BOLT
10	2770412	2	M10 NYLOCK
11	180277	1	RAM GUIDE

# Spearhead TWIGA PRO

---

LH 650T INNER DIPPER ARM – SI80028.56  
RH 650T INNER DIPPER ARM – SI80028.75  
LH 700T INNER DIPPER ARM – SI80028.58  
RH 700T INNER DIPPER ARM – SI80028.77  
LH 800T INNER DIPPER ARM – SI80028.60  
RH 800T INNER DIPPER ARM – SI80028.79



# Spearhead TWIGA PRO

---

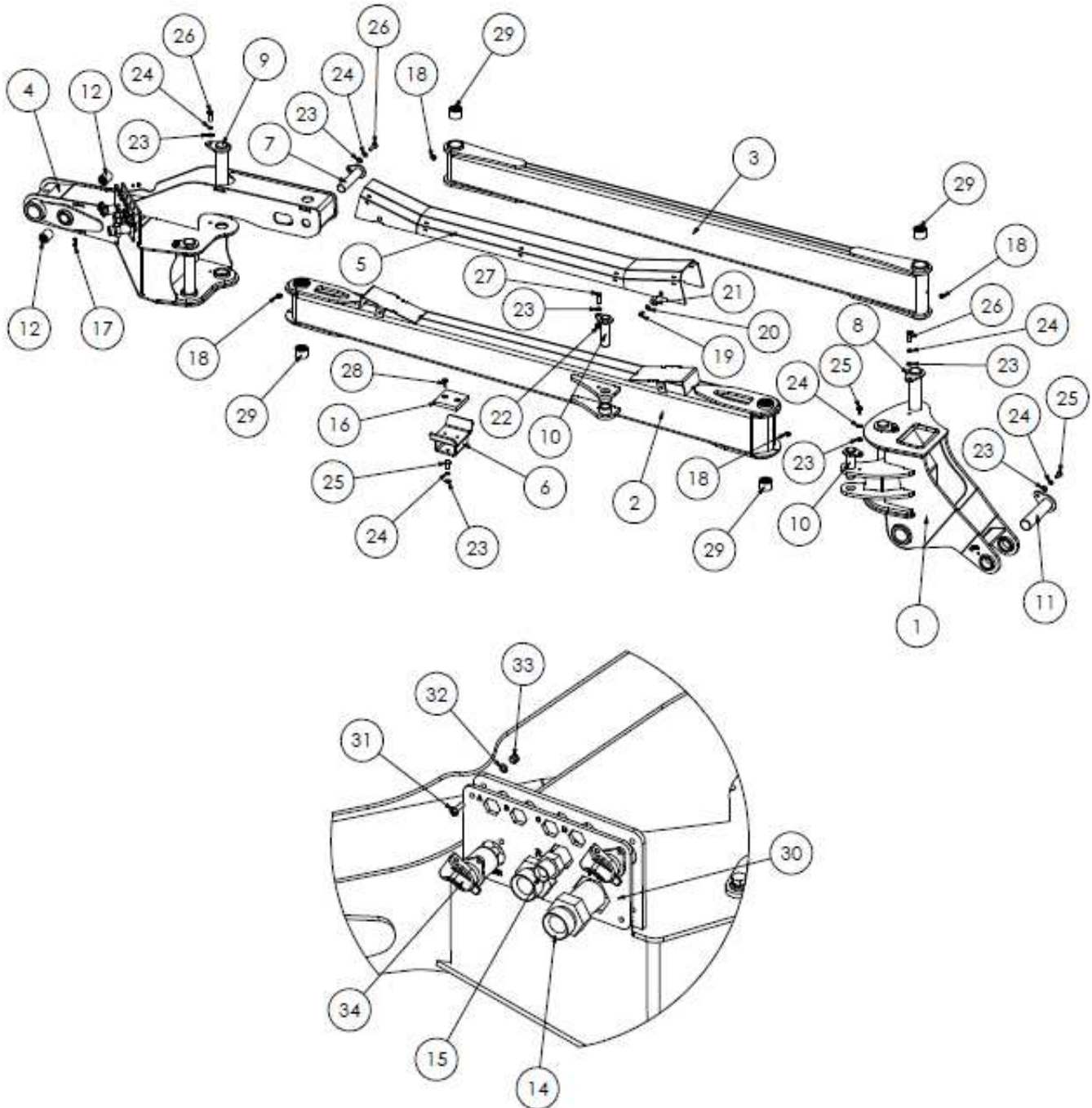
LH 650T INNER DIPPER ARM – SI80028.56  
RH 650T INNER DIPPER ARM – SI80028.75  
LH 700T INNER DIPPER ARM – SI80028.58  
RH 700T INNER DIPPER ARM – SI80028.77  
LH 800T INNER DIPPER ARM – SI80028.60  
RH 800T INNER DIPPER ARM – SI80028.79

REF NO.	PART NO.	QTY.	DESCRIPTION
1	180251	1	LH INNER DIPPER ARM - 650T
1	180253	1	RH INNER DIPPER ARM - 650T
1	180255	1	LH INNER DIPPER ARM - 700T
1	180257	1	RH INNER DIPPER ARM - 700T
1	180890	1	LH INNER DIPPER ARM - 800T
1	180919	1	RH INNER DIPPER ARM - 800T
2	180083	1	LH BULKHEAD
2	180099	1	RH BULKHEAD
3	1782100	1	PEAR PIN: 30 X 132 mm
4	1782109	1	PEAR PIN: 25.4 X 132 mm
5	42654.08	2	BUSH
6	2770434	4	M10 FLAT WASHER
7	2770469	4	M10 SPRING WASHER
8	2770407	2	M10 X 25 BOLT
9	2770418	2	M10 X 20 BOLT
10	3460115	2	1" BULKHEAD
11	3700187	1	1/2" BULKHEAD
12	3460122	6	1/4" BULKHEAD
13	3460104	4	1/4" BLANKING CAP
14	180263	1	LH BULKHEAD RETAINING PLATE
14	180264	1	RH BULKHEAD RETAINING PLATE
15	05.961.03	6	M5 X 20 SCREW
16	2770391	6	M5 FLAT WASHER
17	2770394	6	M5 NYLOCK
18	2770639	1	M6 EXTENDED GREASE NIPPLE
19	8770173	-	3 PIN SOCKET



# Spearhead TWIGA PRO

LH 600VFR DIPPER ARM – SI80028.97  
RH 600VFR DIPPER ARM – SI80028.102  
LH 650VFR DIPPER ARM – SI80028.104  
RH 650VFR DIPPER ARM – SI80028.105



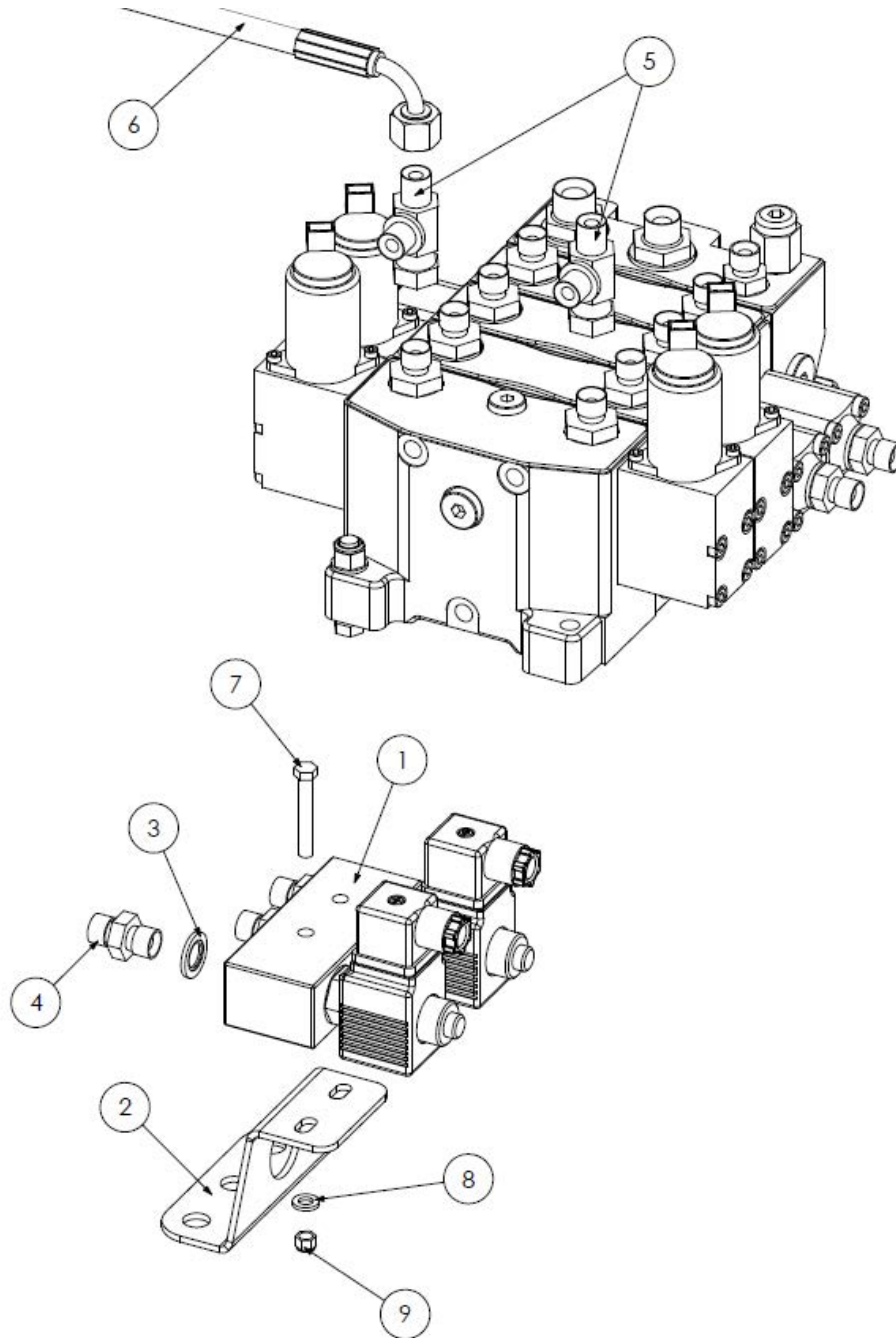
# Spearhead TWIGA PRO

LH 600VFR DIPPER ARM – S180028.97  
 RH 600VFR DIPPER ARM – S180028.102  
 LH 650VFR DIPPER ARM – S180028.104  
 RH 650VFR DIPPER ARM – S180028.105

REF NO.	PART NO.	QTY.	DESCRIPTION
1	180892	1	LH KNUCKLE
1	180003	1	RH KNUCKLE
2	180893	1	LH PARALLEL ARM
2	180004	1	RH PARALLEL ARM
3	180894	1	TIE BAR
4	180298	1	LH DIPPER ARM - 600VFR
4	180299	1	RH DIPPER ARM - 600VFR
4	180300	1	LH DIPPER ARM - 650VFR
4	180301	1	RH DIPPER ARM - 650VFR
5	180983	1	PARALLEL ARM HOSE GUARD
6	180984	1	BUMP STOP
7	1782100	1	PEAR PIN: 30 X 132 mm
8	1782117	2	PEAR PIN: 40 X 274 mm
9	1782118	2	PEAR PIN: 40 X 220 mm
10	1782119	2	PEAR PIN: 30 X 100 mm
11	1782120	1	PEAR PIN: 40 X 164 mm
12	42654.08	2	BUSH
14	3460115	2	1" BULKHEAD
15	3700187	1	1/2" BULKHEAD
16	8770637	1	NYLON PAD
17	2770639	1	M6 EXTENDED GREASE NIPPLE
18	2770497	4	M6 90 GREASE NIPPLE
19	2770370	4	M8 X 16 BUTTON BOLT
20	2770433	4	M8 SPRING WASHER
21	2770244	4	M8 FLAT WASHER
22	2770412	1	M10 NYLOCK
23	2770434	10	M10 FLAT WASHER
24	2770469	9	M10 SPRING WASHER
25	2770418	4	M10 X 20 BOLT
26	2770421	5	M10 X 30 BOLT
27	2770396	1	M10 X 35 BOLT
28	2770554	2	M10 X 20 SKT CSK SCREW
29	4600148	8	BUSH
30	180263	1	LH BULKHEAD RETAINING PLATE
30	180264	1	RH BULKHEAD RETAINING PLATE
31	05.961.03	6	M5 X 20 SCREW
32	2770391	6	M5 FLAT WASHER
33	2770394	6	M5 NYLOCK
34	8770173	-	3 PIN SOCKET

# Spearhead TWIGA PRO

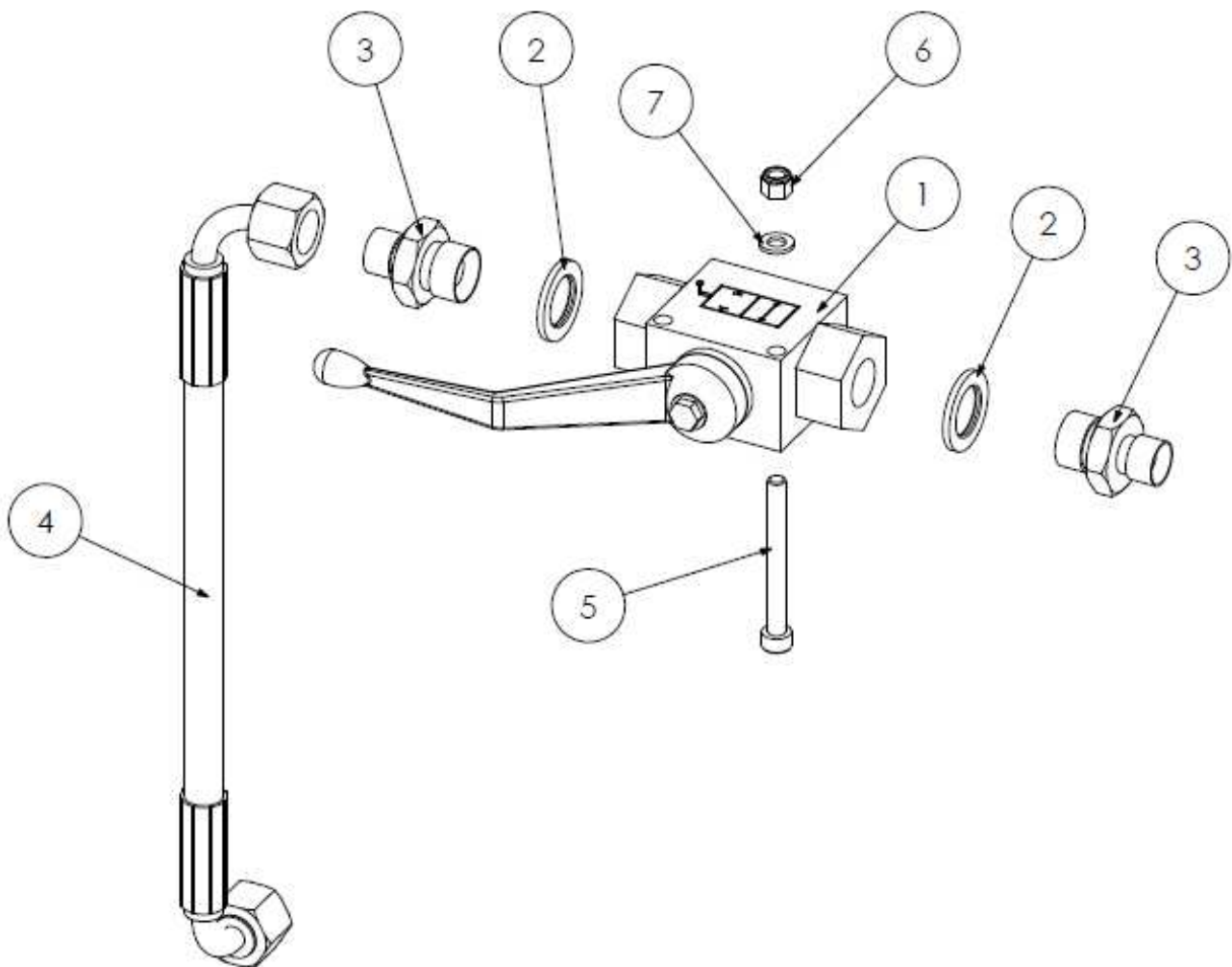
## HEAD FLOAT – SI80028.83



REF NO.	PART NO.	QTY.	DESCRIPTION
1	3600132	1	VALVE
2	1800286	1	VALVE BRACKET
3	3260070	3	1/4 BONDED SEAL
4	3360080	3	1/4 M-M
5	3460300	2	1/4 FM-M-M TEE
6	3760115	3	1/4 HOSE - 600mm LONG
7	30.068.88	2	M6 X 45 BOLT
8	2771408	2	M6 FLAT WASHER
9	2770373	2	M6 NYLOCK NUT
10	8400035	1	OFF/ON/ON SWITCH

# Spearhead TWIGA PRO

## LIFT RAM SHUT OFF VALVE – S180028.86



REF NO.	PART NO.	QTY.	DESCRIPTION
1	3600129	1	2 WAY BALL VALVE
2	3260071	2	3/8" BONDED SEAL
3	3360083	2	1/4"-3/8" M-M
4	3760116	1	1/4" HOSE - 250mm
5	9243102	2	M5 X 50 SKT CAP SCREW
6	2770394	2	M5 NYLOCK
7	2770391	2	M5 FLAT WASHER
8	8770416	1	DECAL

# Spearhead TWIGA PRO

---

560 DECALS - SI80028.35  
650T DECALS - SI80028.36  
700T DECALS - SI80028.37  
800T DECALS - SI80028.38  
600VFR DECALS - SI80028.98  
650VFR DECALS - SI80028.103

8770420



8770371



8770374



560

8770406

650T

8770407

700T

8770408

800T

8770409

600  
VFR

8770411

650  
VFR

8770412

8770404



8770405



# Spearhead TWIGA PRO

SAFETY DECALS – 5180028.49



8770307

Recommended P.T.O.  
speed 540 r.p.m.

8770305



8770322



8770363



8770367



8770306



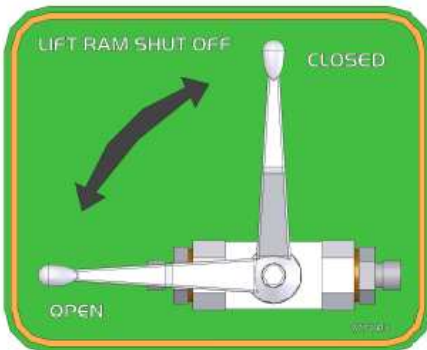
8770358



8770362



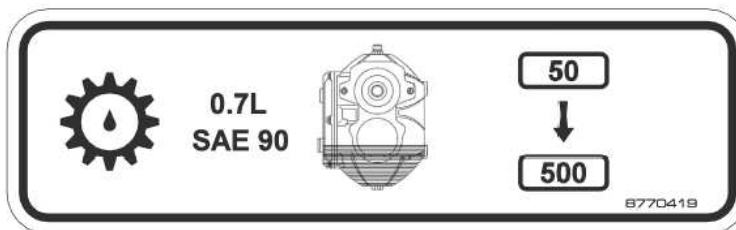
8770359



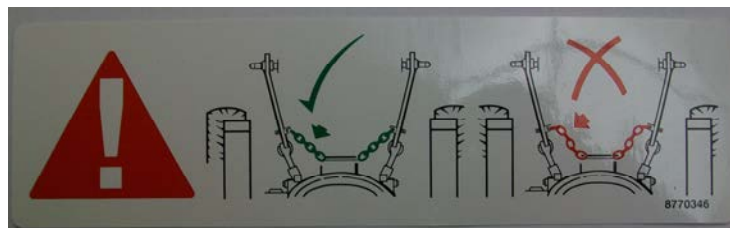
8770416



09.846.02



8770419

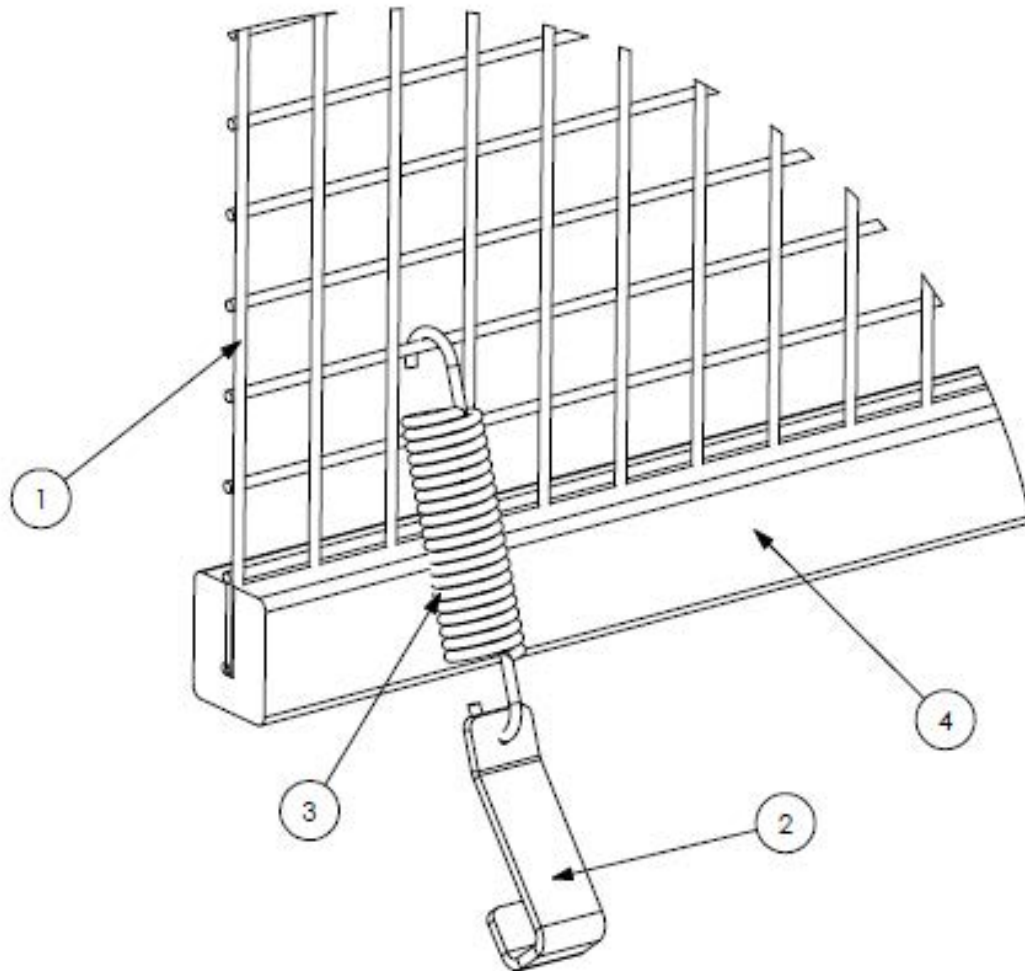


8770346



# Spearhead TWIGA PRO

## CAB GUARD KIT – SI80028.53

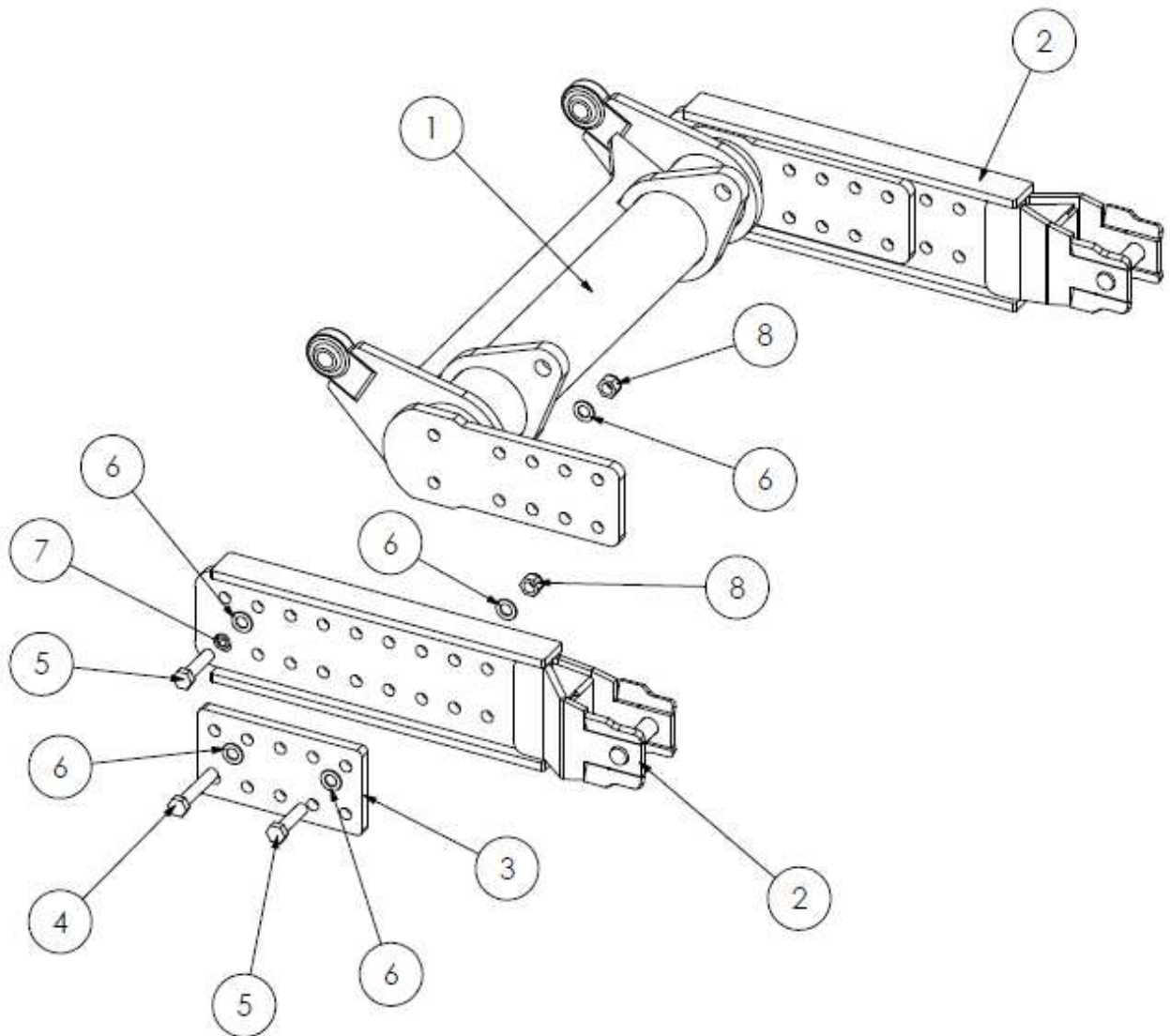


REF NO.	PART NO.	QTY.	DESCRIPTION
	OPT0603	1	CAB GUARD KIT
1	1777140	2	MESH PANEL
2	41745.01	10	HOOK
3	6310209	10	SPRING
4	8550134	1	FOAM - 5M



# Spearhead TWIGA PRO

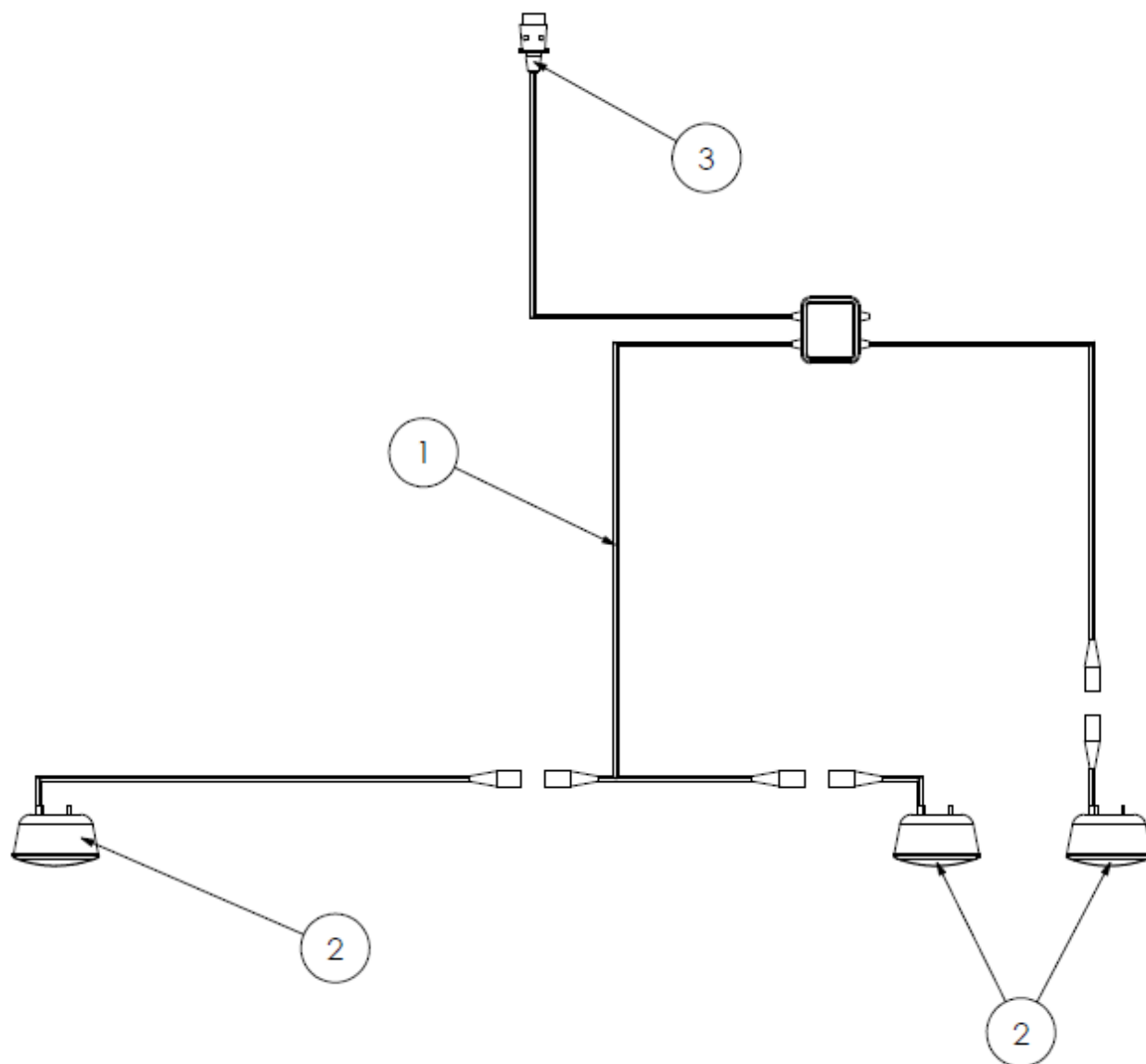
## AXLE MOUNT SUB FRAME KIT – OPT0201



REF NO.	PART NO.	QTY.	DESCRIPTION
	OPT0201	1	AXLE MOUNT SUB FRAME KIT
1	1777030A	1	SUB FRAME
2	1777032A	2	ARM
3	1777035	2	BRACE PLATE
4	05.292.44	16	M20 X 110 BOLT
5	2770550	8	M20 X 80
6	2770517	44	M20 FLAT WASHER
7	05.282.05	4	M20 SPRING WASHER
8	2770409	20	M20 NYLOCK

# Spearhead TWIGA PRO

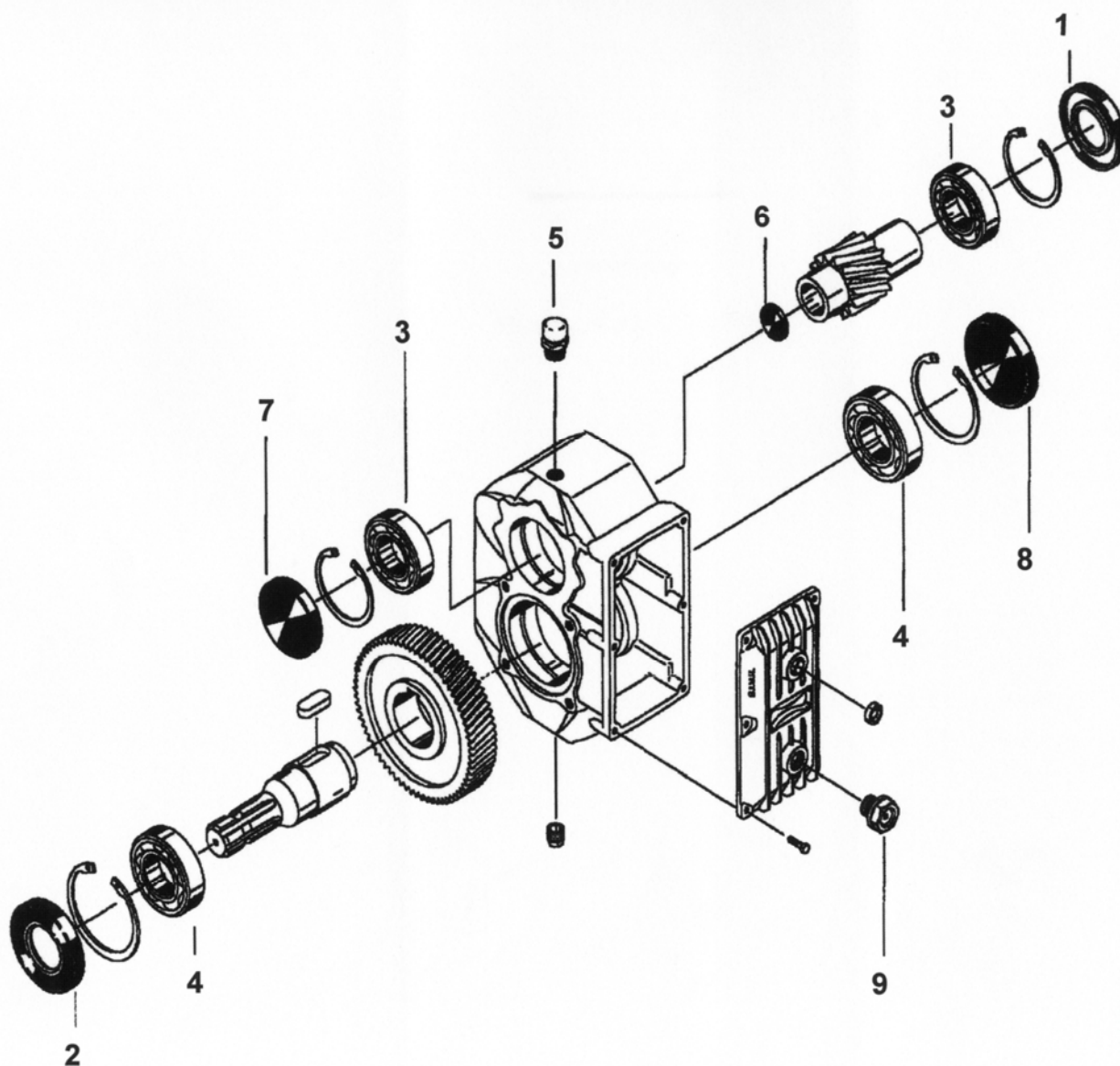
## LIGHT CIRCUIT – SI80028.39



REF NO.	PART NO.	QTY.	DESCRIPTION
1	8770650	1	LIGHT LOOM
2	8770658	3	LIGHT UNIT
3	8770657	1	7 PIN PLUG

# Spearhead TWIGA PRO

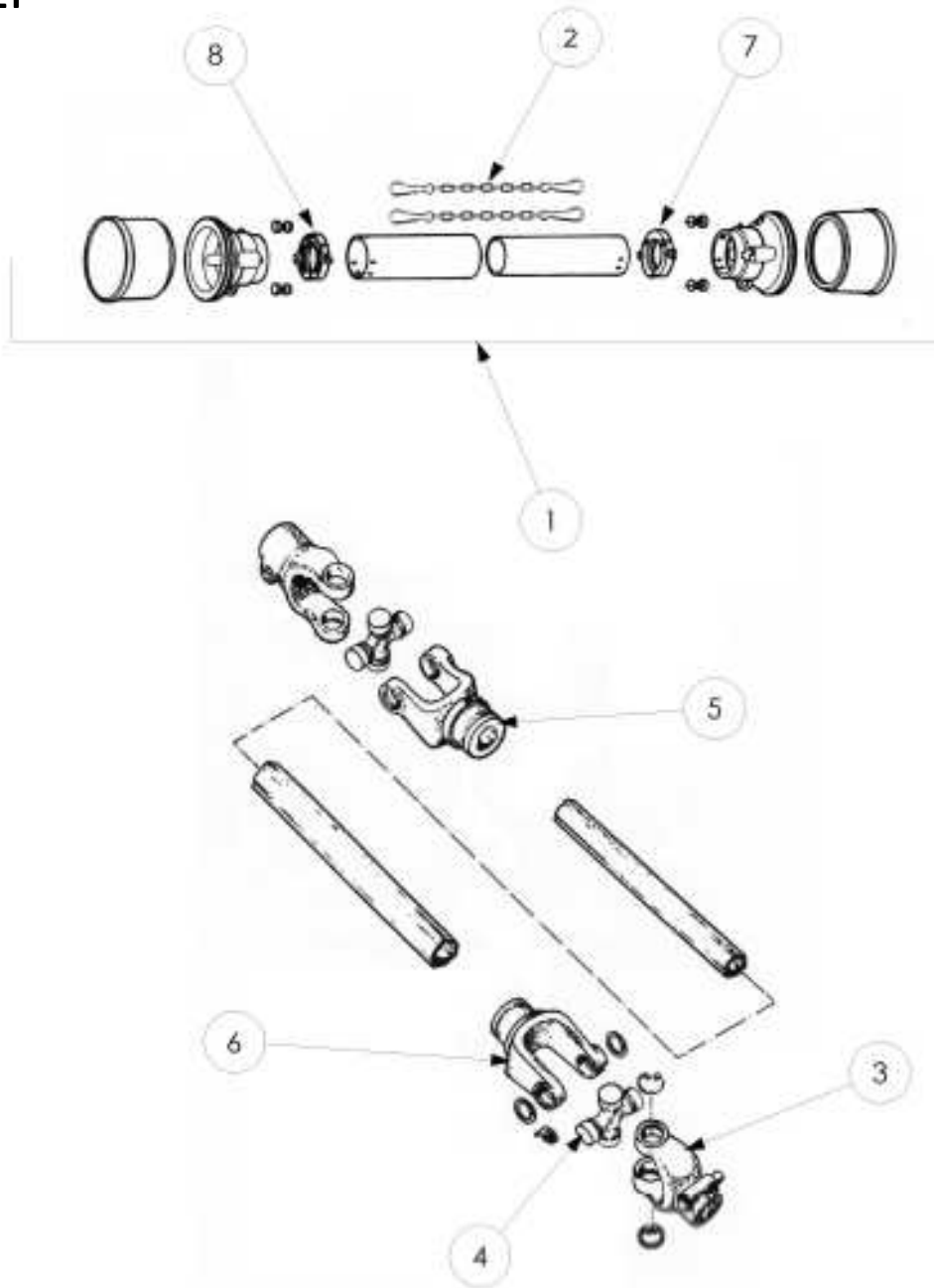
## GEARBOX ASSEMBLY



REF NO.	PART NO.	QTY.	DESCRIPTION
	3151080	1	GEARBOX ASSEMBLY
1	4771119	-	OIL SEAL
2	5771613	-	OIL SEAL
3	4771605	-	BEARING
4	4771607	-	BEARING
5	5771124	-	PLUG
6	5771123	-	END CAP
7	5771615	-	END CAP
8	5771614	-	END CAP
9	5771122	-	LEVEL GAUGE

# Spearhead TWIGA PRO

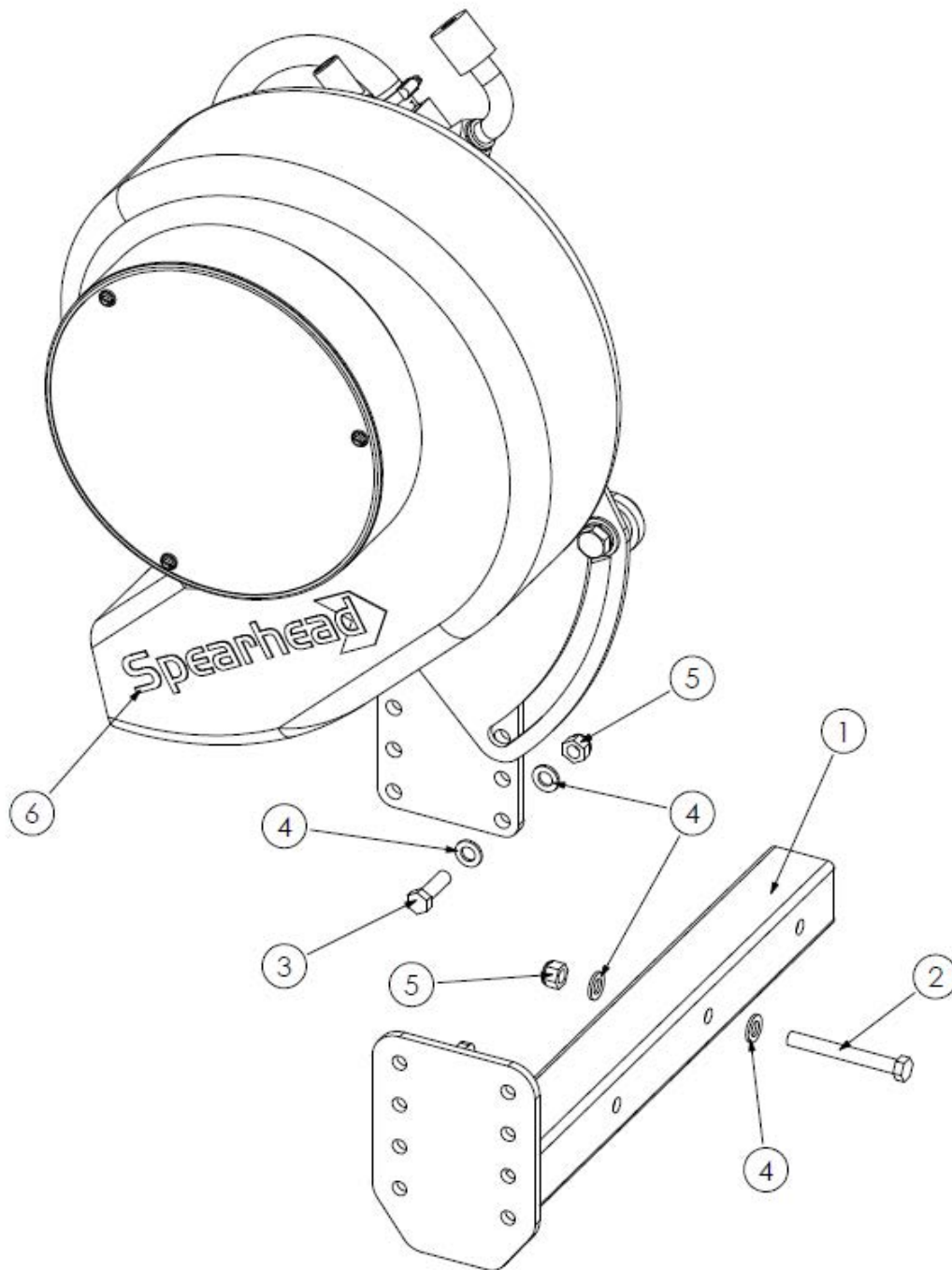
## PTO ASSEMBLY



REF NO.	PART NO.	QTY.	DESCRIPTION
	5770084C	1	PTO ASSEMBLY
1	5772263	-	GUARD
2	5771020	-	CHAIN
3	5772240	-	YOKE – 6 SPLINE
3	5772241	-	YOKE – 21 SPLINE
4	5772242	-	CROSS JOURNAL
5	5772244	-	INNER YOKE
6	5772264	-	OUTER YOKE
7	4770815	-	INNER BEARING
8	4770814	-	OUTER BEARING

# Spearhead TWIGA PRO

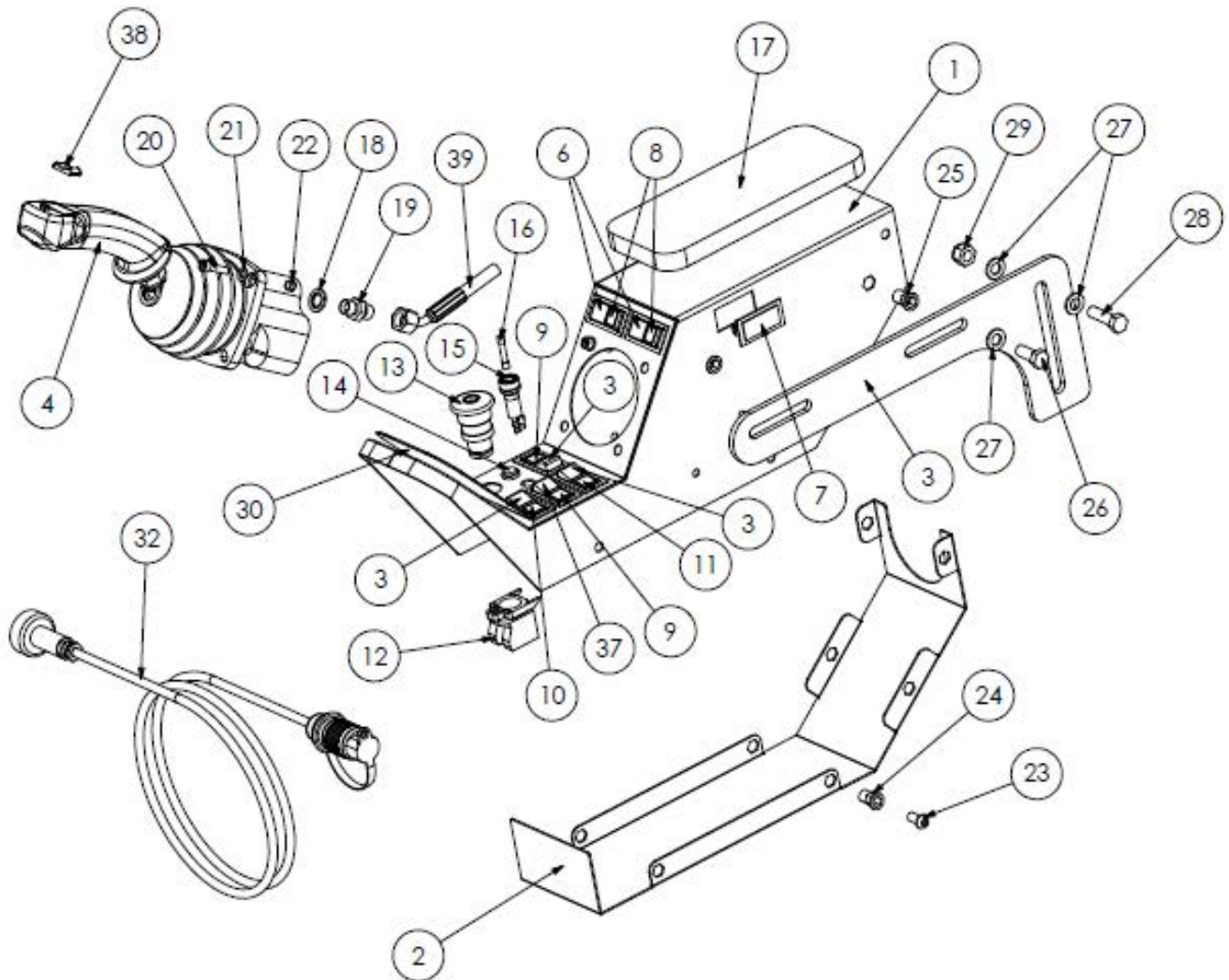
LH DEBRIS BLOWER – OPT0698  
RH DEBRIS BLOWER – OPT0699



REF NO.	PART NO.	QTY.	DESCRIPTION
1	180891	1	BRACKET
2	2770471	3	M12 X 100 BOLT
3	2770443	4	M12 X 40
4	2770436	14	M12 FLAT WASHER
5	2770417	7	M12 NYLOCK
6	8770688	1	DECAL

# Spearhead TWIGA PRO

LH HYDRAULIC PROPORTIONAL CONTROLS – SI80028.47C  
RH HYDRAULIC PROPORTIONAL CONTROLS – SI80028.47R



# Spearhead TWIGA PRO

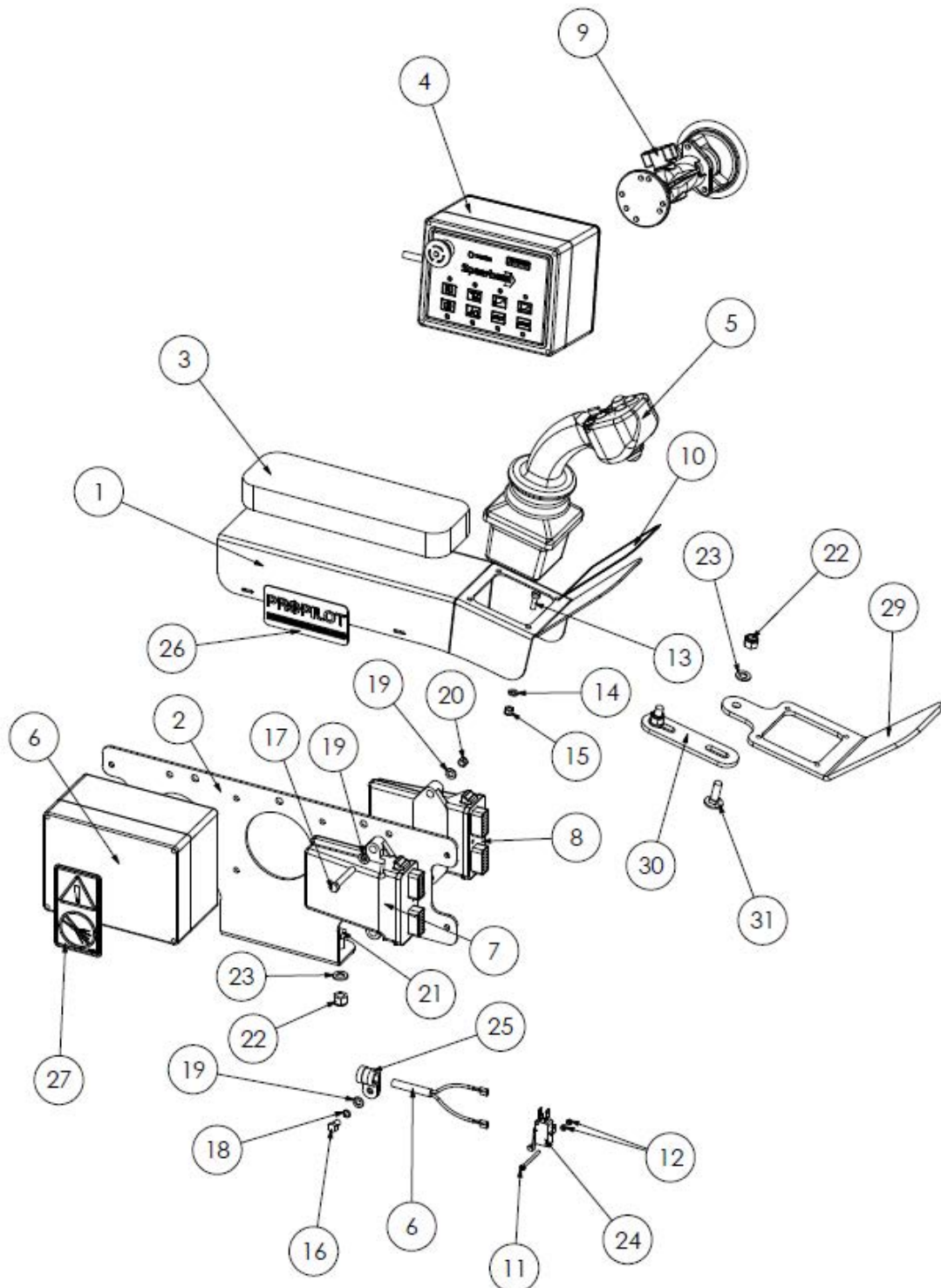
LH HYDRAULIC PROPORTIONAL CONTROLS – S180028.47C  
RH HYDRAULIC PROPORTIONAL CONTROLS – S180028.47R

REF NO.	PART NO.	QTY.	DESCRIPTION
1	1777028A	1	ARMREST
2	1777033	1	ARMREST COVER
3	180440	1	ARMREST BRACKET
4	3910229	1	JOYSTICK
5	3910276	3	SWITCH - ON/OFF
6	8400160	2	SWITCH - ON/OFF/ON
7	8400162	1	SWITCH BLANK
8	8400163B	2	SWITCH INSERT - BLANK
9	8400163G	2	SWITCH INSERT - GREEN
10	8400163R	1	SWITCH INSERT - RED
11	8400163Y	1	SWITCH INSERT - YELLOW
12	8400166	1	ROTOR SWITCH
13	8400167	1	ROTOR KNOB
14	8400168	1	POWER LIGHT
15	8400183	1	FUSE HOLDER
16	8400184	1	FUSE
17	5771634	1	FOAM PAD
18	3260070	6	1/4" BONDED SEAL
19	3360080	6	1/4" M-M
20	2770336	4	M6 X 25 SKT CAP BOLT
21	2771408	4	M6 FLAT WASHER
22	2770373	4	M6 NYLOCK NUT
23	2770370	8	M8 X 15 SKT BUTTON BOLT
24	2770206	8	M8 RIVNUT
25	2770202	4	M10 RIVNUT
26	2770407	2	M10 X 25 BOLT
27	2770434	6	M10 FLAT WASHER
28	2770396	2	M10 X 35 BOLT
29	2770412	2	M10 NYLOCK
30	8770456	1	LH DECAL
30	8770457	-	RH DECAL
31	8770715	1	CONTROL LOOM
32	8770712	1	POWER LEAD
33	43542.21	1	LARGE HOSE SLEEVE
34	30.058.66	12	SMALL CABLE TIE
37	8400035	1	SWITCH - OFF/ON/ON
38	3910222	-	HEAD ANGLE SWITCH
39	3750561	1	HOSE KIT



# Spearhead TWIGA PRO

LH ELECTRIC PROPORTIONAL PRO PILOT CONTROLS – S180028.48  
RH ELECTRIC PROPORTIONAL PRO PILOT CONTROLS – S180028.I16



# Spearhead TWIGA PRO

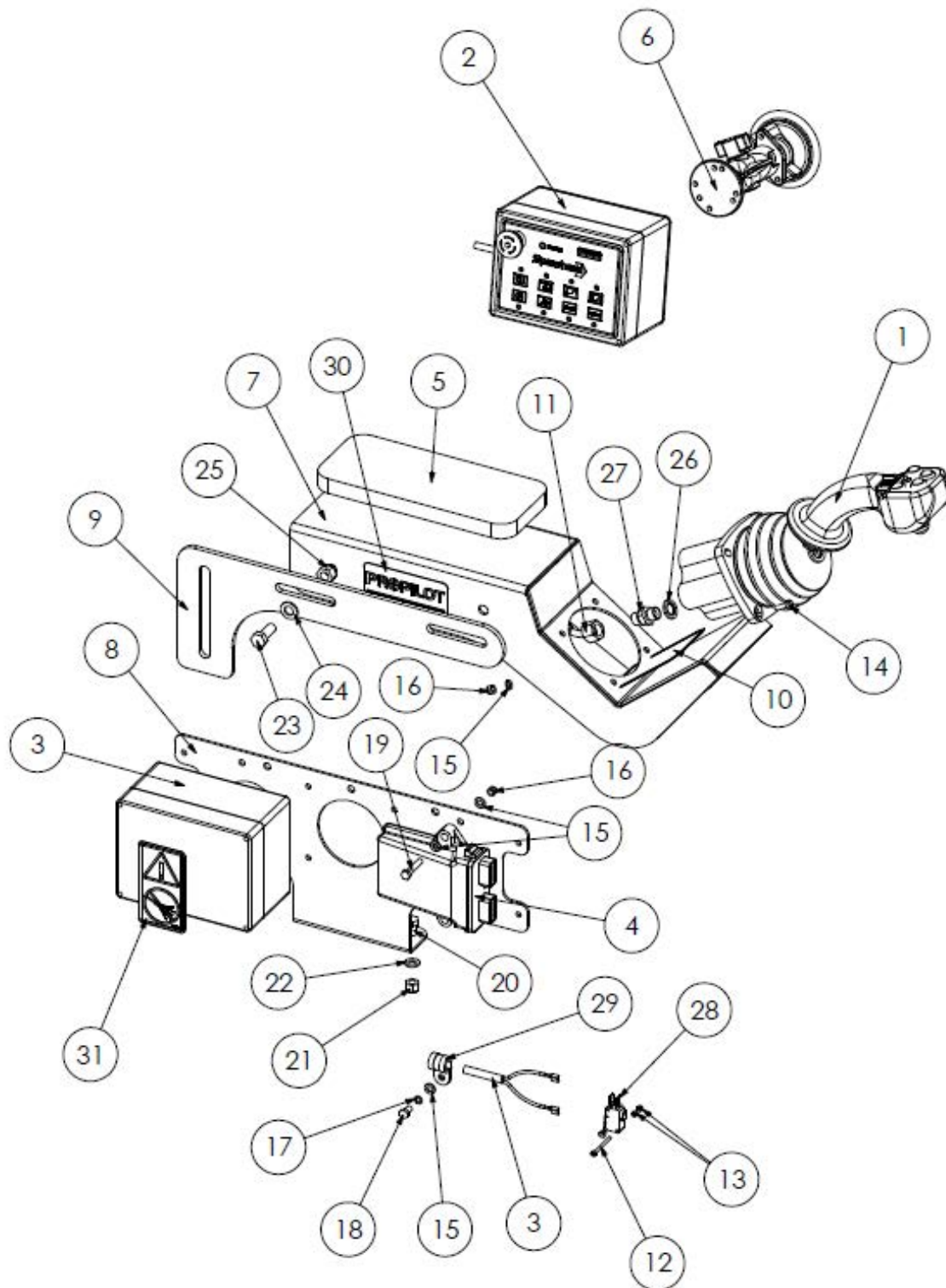
**LH ELECTRIC PROPORTIONAL PRO PILOT CONTROLS – SI80028.48**  
**RH ELECTRIC PROPORTIONAL PRO PILOT CONTROLS – SI80028.II6**

REF NO.	PART NO.	QTY.	DESCRIPTION
1	180729	1	JOYSTICK ARM REST
2	180216	1	JUNCTION BOX BRACKET
3	22073.45	1	FOAM PAD
4	8770702	1	SWITCH BOX
5	8770737	1	ELECTRIC PROP JOYSTICK
6	8770772	1	CONTROL LOOM
7	8770746	1	CONTROL BOX 1
8	8770773	1	CONTROL BOX 2
9	22073.09	1	SUCTION PAD
10	8770435	1	LH DECAL
10	8770437	1	RH DECAL
11	9300108	2	M3 X 20 SCREW
12	2770233	4	M3 FULL NUT
13	9300133	4	M4 X 25 SCREW
14	30.074.95	4	M4 FLAT WASHER
15	05.948.33	4	M4 NYLOCK NUT
16	30.068.83	3	M6 X 20 BOLT
17	30.068.90	2	M6 X 55 BOLT
18	05.282.07	3	M6 SPRING WASHER
19	2771408	4	M6 FLAT WASHER
20	2770373	2	M6 NYLOCK NUT
21	2770402	2	M8 X 20 BOLT
22	2770416	2	M8 NYLOCK
23	2770432	2	M8 FLAT WASHER
24	3910275	1	SWITCH
25	3850103	3	P CLIP
26	8770453	2	PRO PILOT DECAL
27	8770454	1	DON'T WASH DECAL
28	30.058.66	10	CABLE TIE - SM
29	180228	1	JOYSTICK MOUNT BRACKET
30	180229	1	JOYSTICK MOUNT ARM
31	9293054	2	M8 X 25 COACH BOLT

# Spearhead TWIGA PRO

LH HYDRAULIC PROPORTIONAL PRO PILOT CONTROLS – SI80028.47

RH HYDRAULIC PROPORTIONAL PRO PILOT CONTROLS – SI80028.117



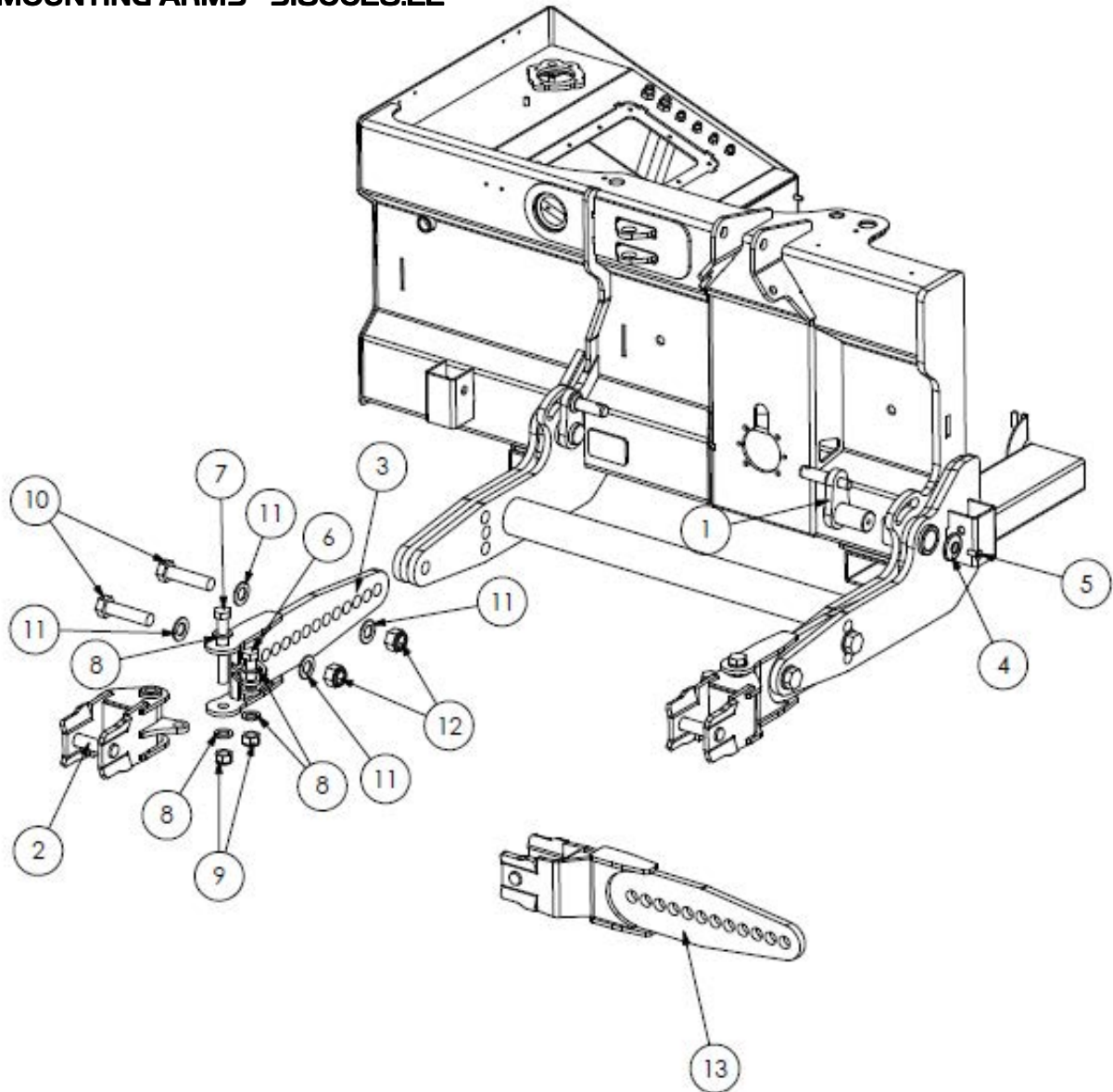
# Spearhead TWIGA PRO

LH HYDRAULIC PROPORTIONAL PRO PILOT CONTROLS – SI80028.47  
RH HYDRAULIC PROPORTIONAL PRO PILOT CONTROLS – SI80028.II7

REF NO.	PART NO.	QTY.	DESCRIPTION
1	3910097	1	HYD PROP JOYSTICK
2	8770702	1	SWITCH BOX
3	8770772	1	LOOM
4	8770746	1	CONTROL BOX 1
5	5771634	1	FOAM PAD
6	22073.09	1	SUCTION PAD
7	180050	1	JOYSTICK ARM REST
8	180216	1	JUNCTION BOX BRACKET
9	180440	1	ARM REST BRACKET
10	8770435	1	LH DECAL
10	8770437	1	RH DECAL
11	3750561	1	CONTROL HOSE KIT
12	9300108	2	M3 X 20 SCREW
13	2770233	4	M3 FULL NUT
14	2770336	4	M6 X 25 SKT CAP BOLT
15	2771408	11	M6 FLAT WASHER
16	2770373	6	M6 NYLOCK
17	05.282.07	3	M6 SPRING WASHER
18	30.068.83	3	M6 X 20 BOLT
19	2770486	2	M6 X 30 BOLT
20	2770402	2	M8 X 20 BOLT
21	2770416	2	M8 NYLOCK
22	2770432	2	M8 FLAT WASHER
23	2770407	2	M10 X 25 BOLT
24	2770434	2	M10 FLAT WASHER
25	2770412	2	M10 NYLOCK
26	3260070	6	1/4" BONDED SEAL
27	3360080	6	1/4" M-M
28	3910275	1	SWITCH
29	3850103	3	P CLIP
30	8770452	2	PRO PILOT DECAL
31	8770454	1	DON'T WASH DECAL
32	30.058.66	8	CABLE TIE - SM
33	43542.21	1	HOSE SLEEVE: 3100mm - LRG

# Spearhead TWIGA PRO

## BRACKET MOUNTING ARMS - S180028.22



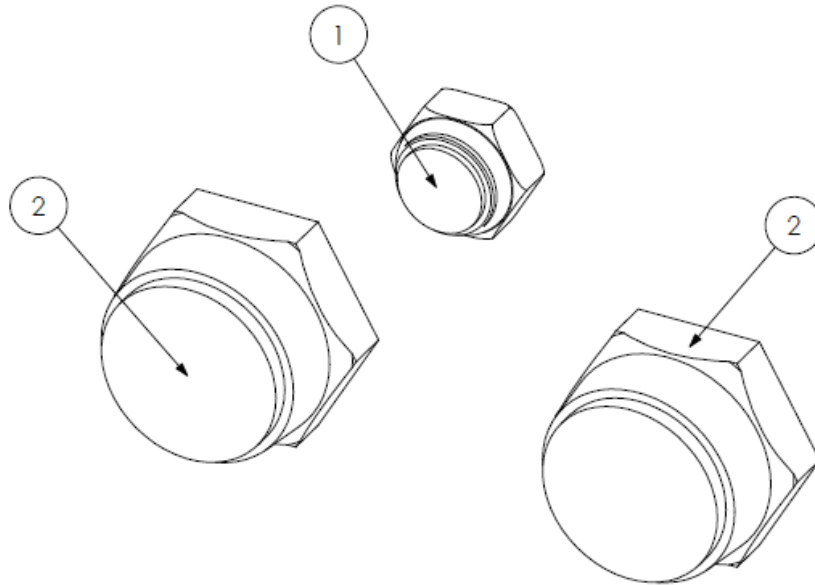
REF NO.	PART NO.	QTY.	DESCRIPTION
1	180082	2	CAT II FLOATING LOWER LINK
1	180959	OPT	CAT III FLOATING LOWER LINK
2	180261	2	SWINGING AXLE MOUNT BRACKET
3	180262	2	SWINGING AXLE MOUNT ARM
4	1777208	2	RETAINING WASHER - 65 mm
5	2770506	2	M12 X 30 SKT CSK SCREW
6	2770413	2	M24 X 75 BOLT
7	9213449	2	M24 X 220 BOLT
8	2770464	8	M24 FLAT WASHER
9	2770414	4	M24 NYLOCK NUT
10	2770426	4	M30 X 120 BOLT
11	05.281.18	8	M30 FLAT WASHER
12	2770427	4	M30 NYLOCK NUT
13	180508	OPT	FIXED AXLE MOUNT ARM





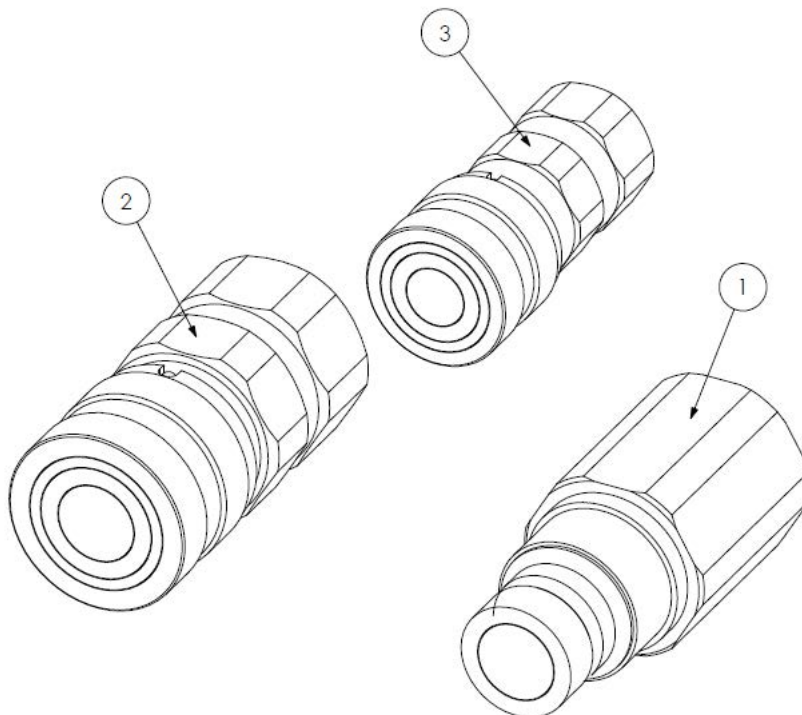
# Spearhead TWIGA PRO

## SI80028.67 - HOSE BLANKING CAPS



REF NO.	PART NO.	QTY.	DESCRIPTION
1	8582054	1	1/2" BLANKING CAP
2	3700209	2	1" BLANKING CAP

## SI80028.II4 - QUICK RELEASE COUPLINGS



REF NO.	PART NO.	QTY.	DESCRIPTION
1	3151105	1	1" MALE QR COUPLING
2	3151106	1	1" FEMALE QR COUPLING
3	3151110	1	1/2" FEMALE QR COUPLING
-	3151109	OPT	1/2" MALE QR COUPLING





Spearhead Machinery Ltd  
Green View  
Salford Priors  
Evesham  
Worcestershire  
WR11 8SW  
Tel: 01789 491860  
Fax: 01789 778683  
[www.spearheadmachinery.com](http://www.spearheadmachinery.com)  
[enquiries@spearheadmachinery.com](mailto:enquiries@spearheadmachinery.com)